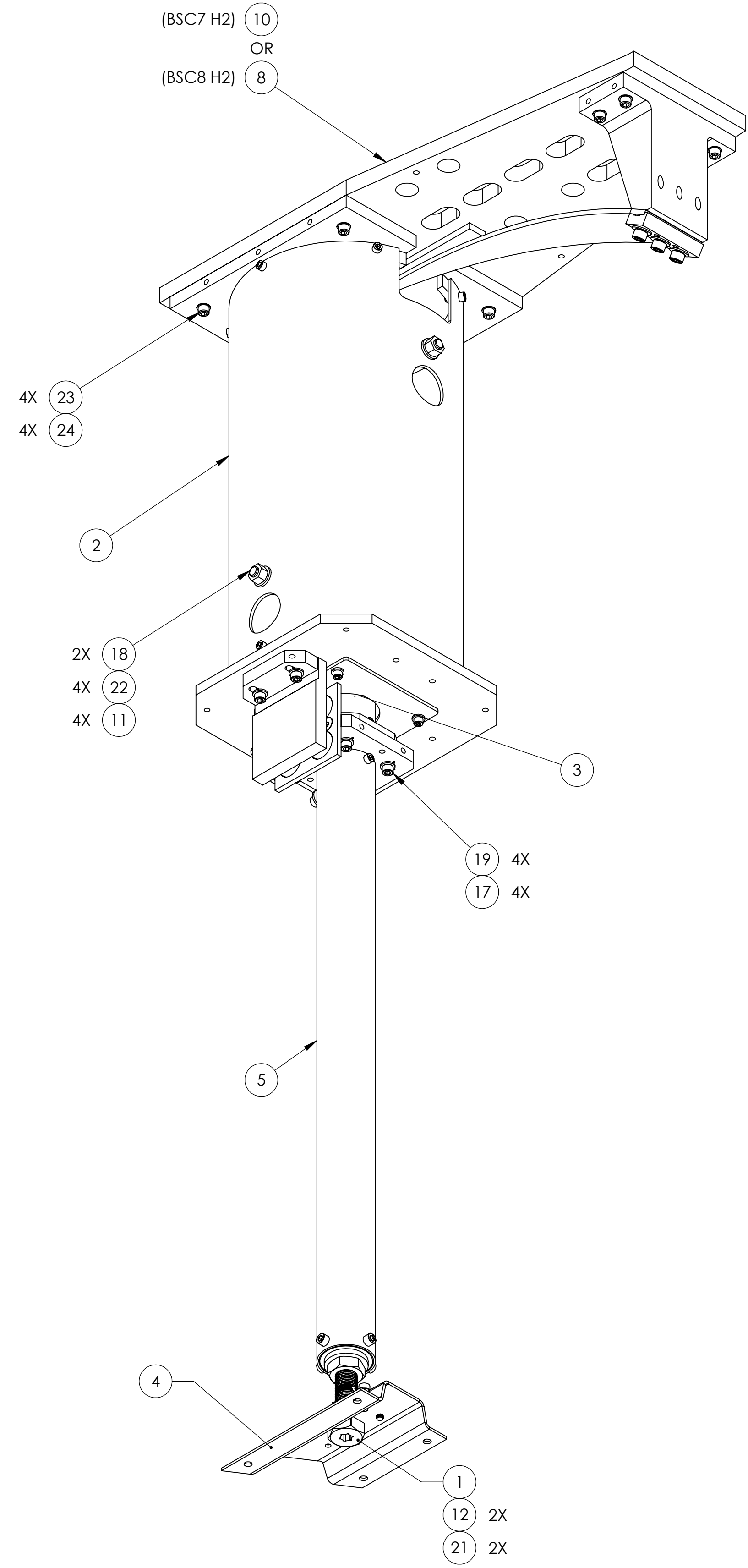


NOTES CONTINUED:

REV.	DATE	DCN #	DRAWING TREE #
-	09 NOV 2011	E1200051	-
-	-	-	-
-	-	-	-

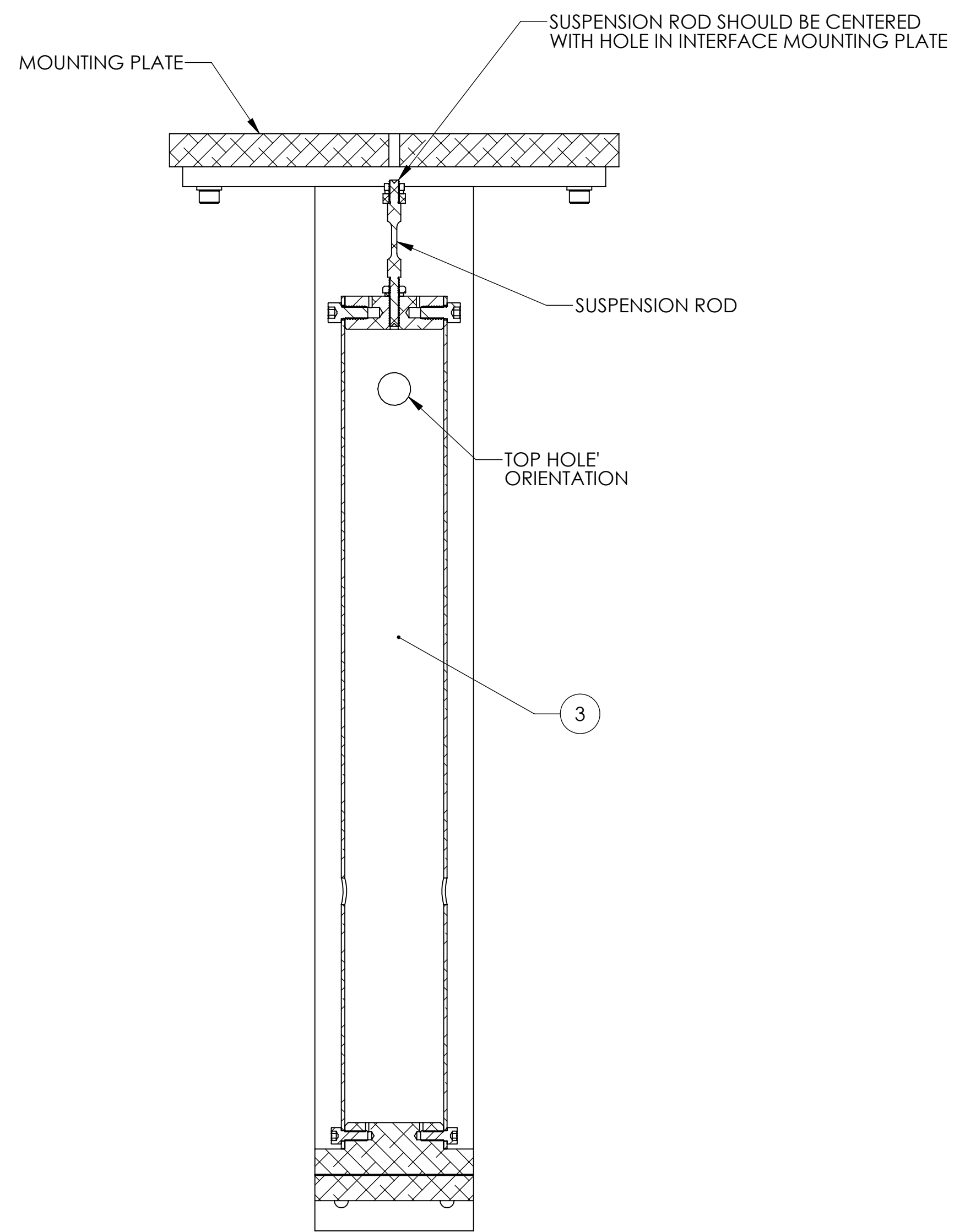


27	98019A330	WASHER #10, NASM 15795-808	300 SSSL	4	4	-
26	92200A242	SOCKET HEAD SCREW, #10-24 X .50 LG (MS16995-36)	300 SSSL	4	4	-
25	D1001120	SLC EARTHQUAKE STOP RING	6061-T6 Al	2	2	-
24	NAS 620-C416L	1/4 FLAT WASHER, .260 ID x .47 OD X .02 THK	300 SSSL	10	10	-
23	C-2016-NA	SOCKET HEAD CAP SCREW, .25-20 X 1 LG	Ag-PLATED 300 SSSL	4	4	-
22	98370A019	WASHER #.375 X .75 OD, McMASTER	18-8 SSSL	4	4	-
21	98125A446	Washer, Flat, .75 OD, 18-8 SSSL	18-8 SSSL	2	2	-
20	98019A355	WASHER FLAT, 1/4" MIL-15795-810	300 SSSL	4	4	-
19	95435A755	SCREW SHCS #.25-20 X .75, McMASTER	TITANIUM	4	4	-
18	95412A651	THREADED STUD .375-16 X 9, McMASTER	18-8 SSSL	2	2	-
17	93286A044	WASHER #25 ALUM, McMASTER	6061-T6	4	4	-
16	92200A541	SHCS, .25-20 x .88, 300 SSSL, MS16995-51	300 SSSL	4	4	-
15	92200A540	SHCS, 1/4-20 X 3/4" LG. MS16995-50 (OR EQUIV)	18-8 SSSL	6	6	-
14	91841A011	McMASTER, HEX NUT, #10-24, SSSL	18-8 SSSL	1	1	1
13	90945A741	WASHER, FLAT, #10 (NAS 620-C10 OR EQUIVALENT)	300 SSSL	1	1	1
12	90810A036	McMASTER, NICKEL COPPER HEX NUT, 3/4-10	NICKEL-COPPER ALLOY 400	2	2	-
11	N-3816-A	HEX NUT, .375-16	Ag-PLATED 300 SSSL	4	4	-
10	D1200147	aLIGO AOS FOLD MIRROR BEAM DUMP BLADE ASSY, BSC7 H2	N/A	1	-	-
9	D1200063	aLIGO AOS SLC FM BEAM DUMP HEIGHT ADJUSTOR BRACE	6061-T6 Al	1	1	-
8	D1101895	aLIGO AOS FOLD MIRROR BEAM DUMP BLADE ASSY, BSC8 H2	N/A	-	1	1
7	D1101288	ALIGNMENT FIXTURE, TUBE UP ASSEMBLY	N/A	-	-	1
6	D1101285	TRANSPORT, LOCKING, ACB	6061-T6 Al	1	1	-
5	D1100062	aLIGO AOS FM BAFFLE DOWN TUBE ASSY	N/A	1	1	-
4	D1003398	FM BEAM DUMP MOUNTING CHANNEL	6061-T6 Al	1	1	-
3	D1002582	SLC BAFFLE TUBE UP ASSEMBLY	N/A	1	1	1
2	D1002564	SLC EDDY CURRENT DAMPING 8 DIA TUBE ASSY	N/A	1	1	-
1	D1001186	SCREW #3/4-16 X 4_McMaster 92198A390	18-8 SSSL	1	1	-
ITEM NO.	NUMBER	DESCRIPTION	MATERIAL	BSC7	BSC8	ALIGNMENT

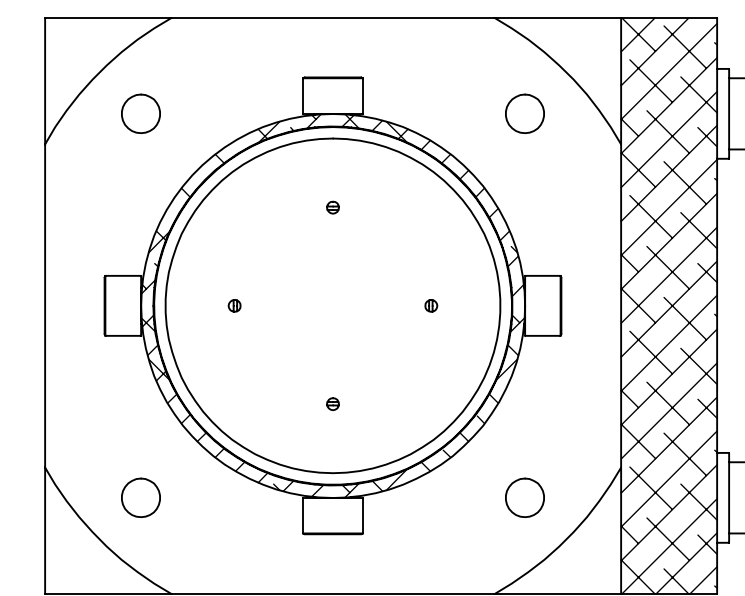
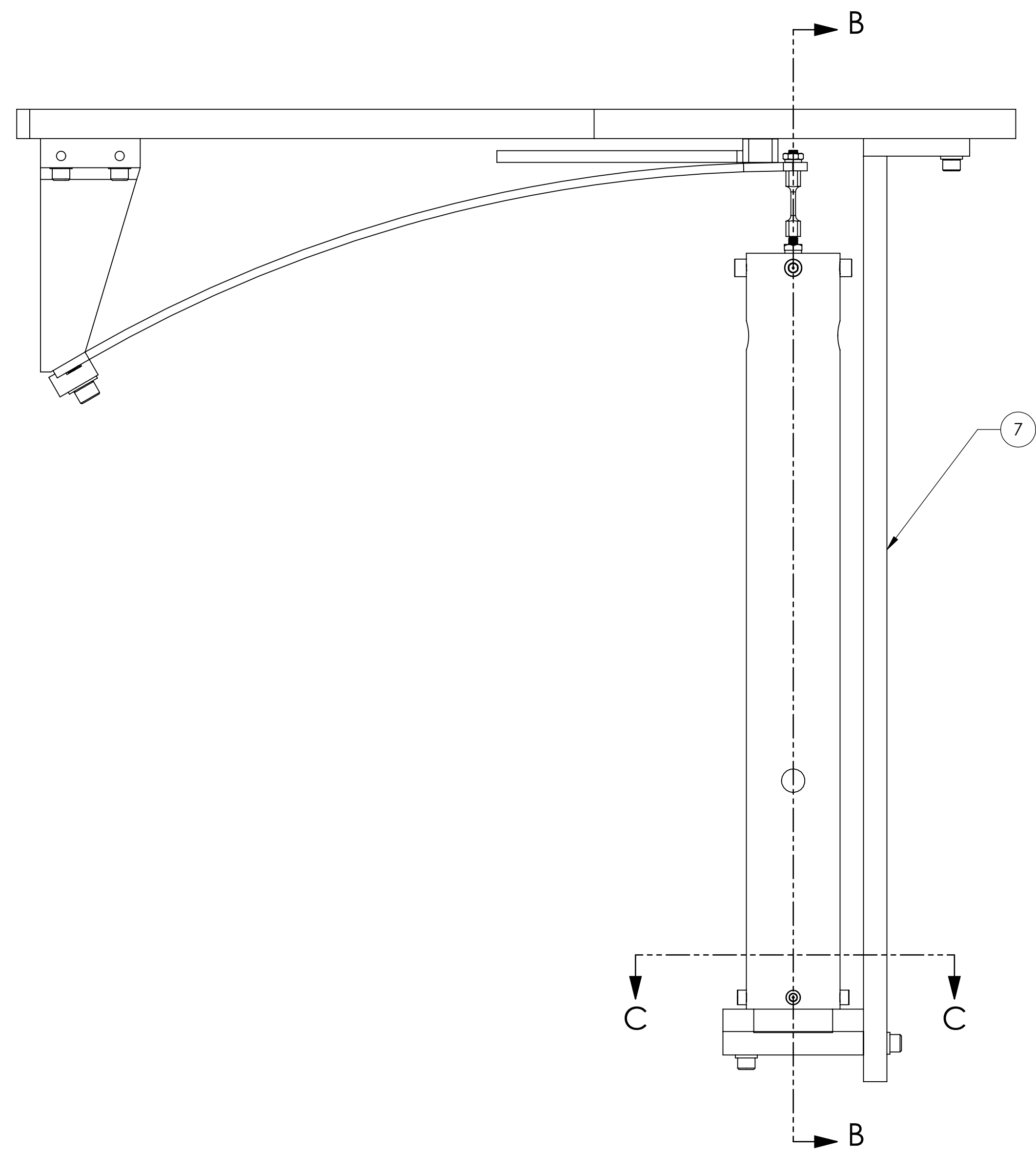
NOTES AND TOLERANCES: (UNLESS OTHERWISE SPECIFIED)	
1. INTERPRET DRAWING PER ASME Y14.5-1994. 2. REMOVE ALL SHARP EDGES, .005-.015, FOR MACHINED PARTS. ROUND ALL EDGES APPROXIMATELY R.02 FOR SHEET METAL PARTS. 3. DO NOT SCALE FROM DRAWING. 4. ALL MACHINING FLUIDS MUST BE FULLY SYNTHETIC, FULLY WATER SOLUBLE AND FREE OF SULFUR, SILICONE, AND CHLORINE.	
DIMENSIONS ARE IN INCHES	
TOLERANCES: .XX ± .02 .XXX ± .005	
ANGULAR ± 1.0°	
MATERIAL	N/A
FINISH	N/A μinch

CALIFORNIA INSTITUTE OF TECHNOLOGY MASSACHUSETTS INSTITUTE OF TECHNOLOGY		PART NAME aLIGO AOS SLC FOLD MIRROR BEAM DUMP SUSPENSION ASSY	
SYSTEM	ADVANCED LIGO	SUB-SYSTEM	AOS
DESIGNER	M. SMITH	SIZE	DWG. NO.
DRAFTER	J. TERRAZAS	DATE	09 NOV 2011
CHECKER	M. SMITH	D1101897	
APPROVAL	D. COYNE		
NEXT ASSY	D0901058	SCALE: 1:12	PROJECTION:
		SHEET 1 OF 3	

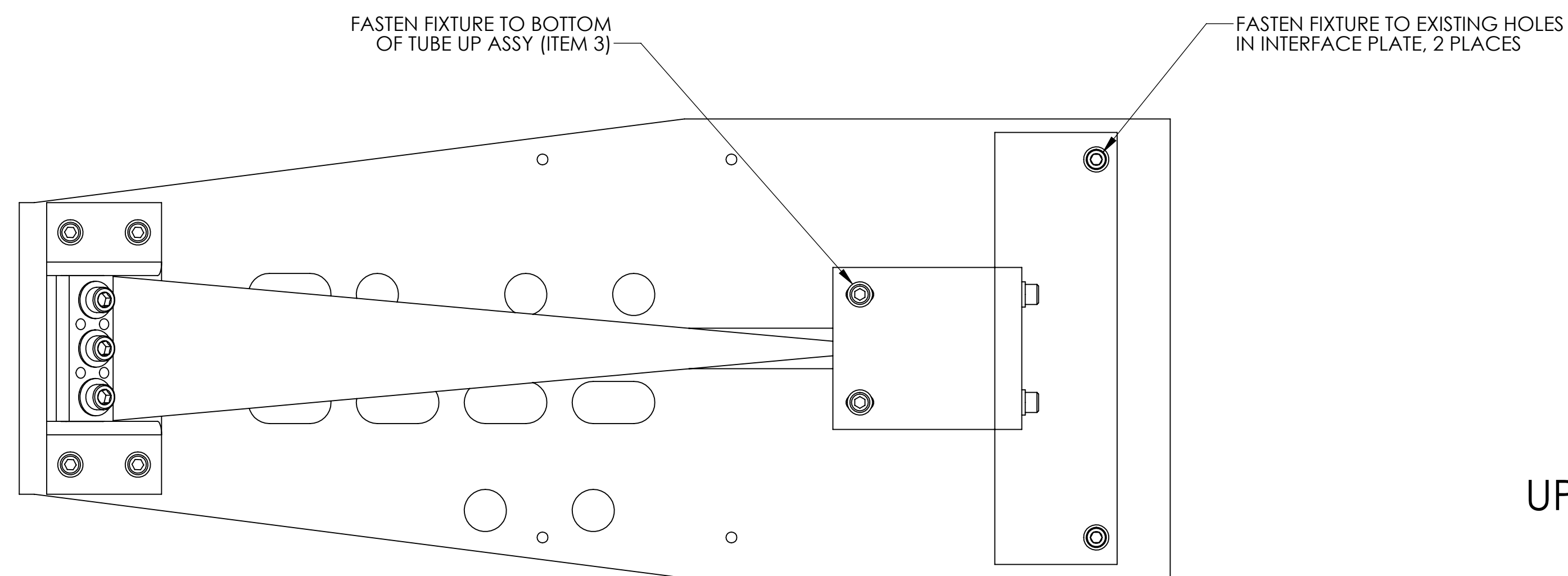
D1101897_A01.aLIGO_AOS_SLC_Fold_Mirror_Beam_Dump_Suspension_Assy_P1817.PDM.REV.X:020.DRAWING.PDM.REV.X:010



SECTION B-B
SCALE 1 : 2



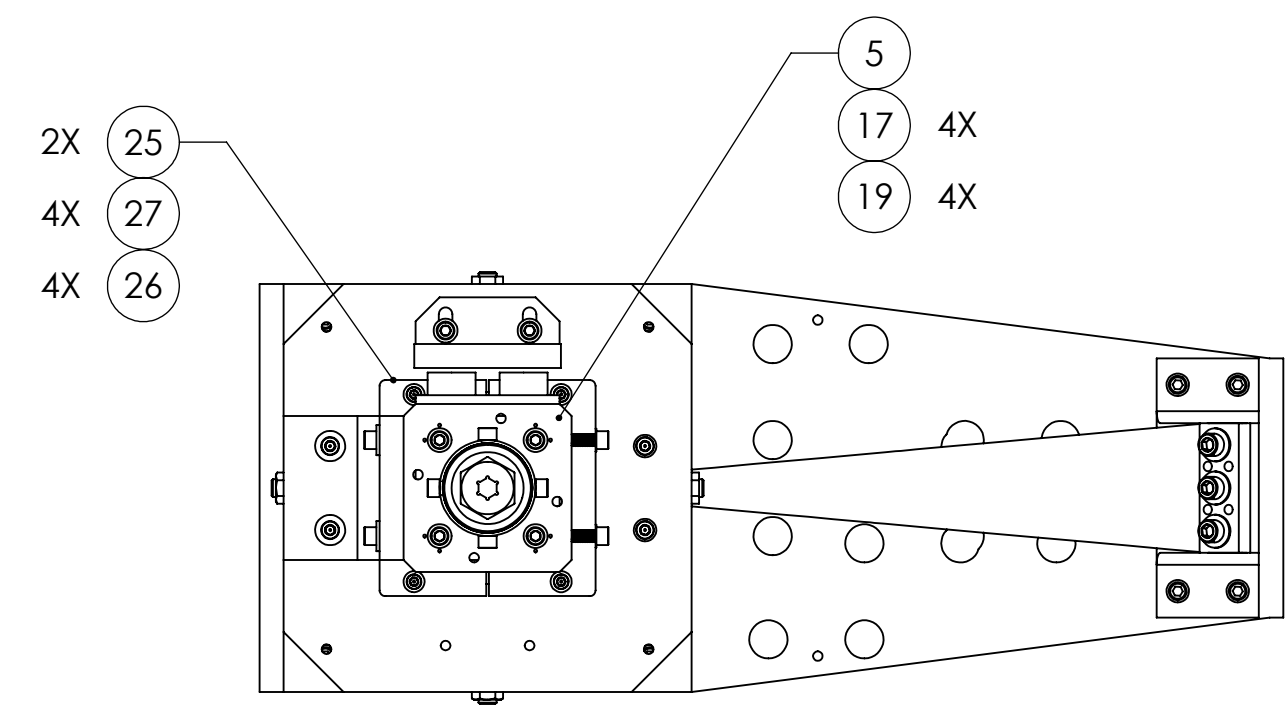
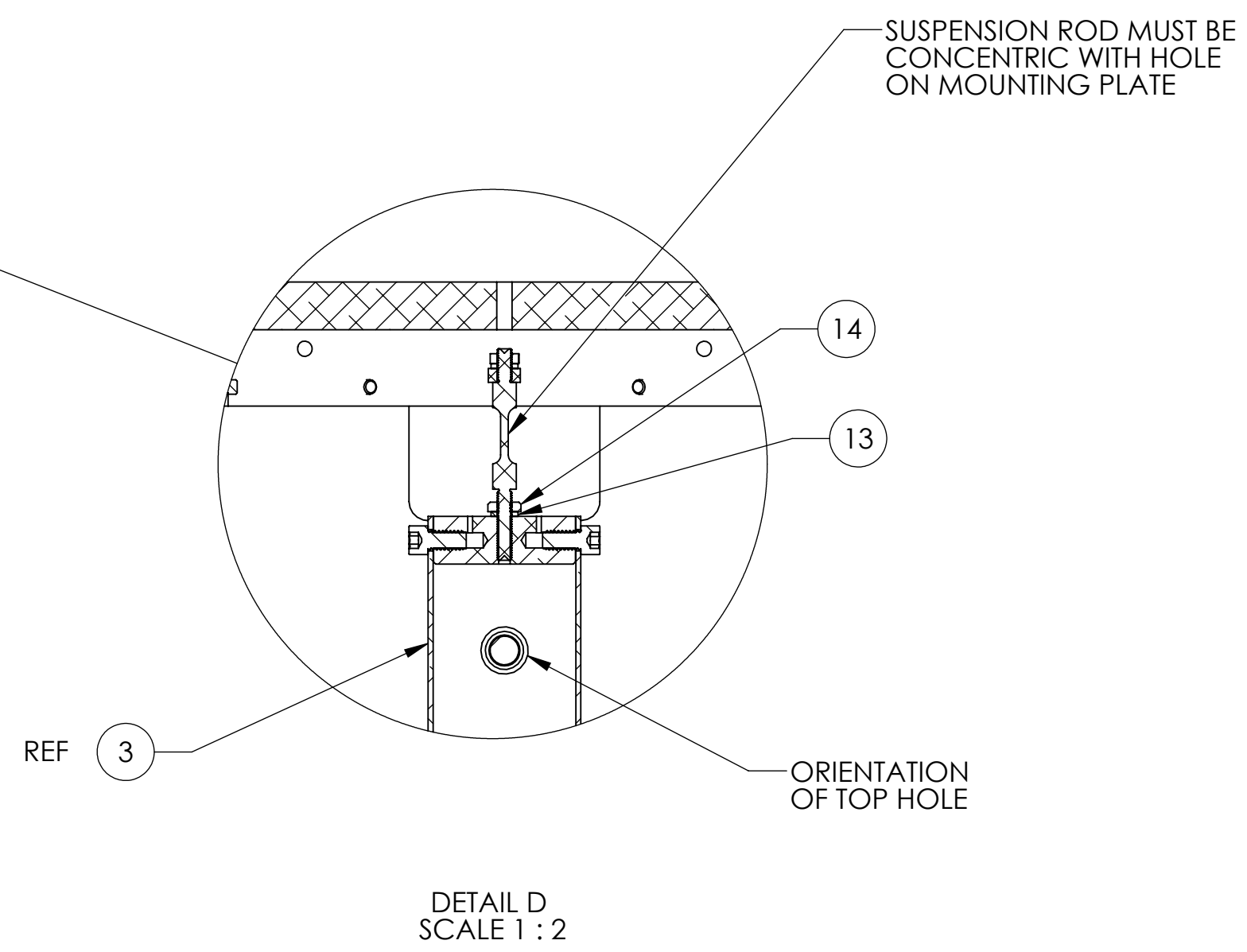
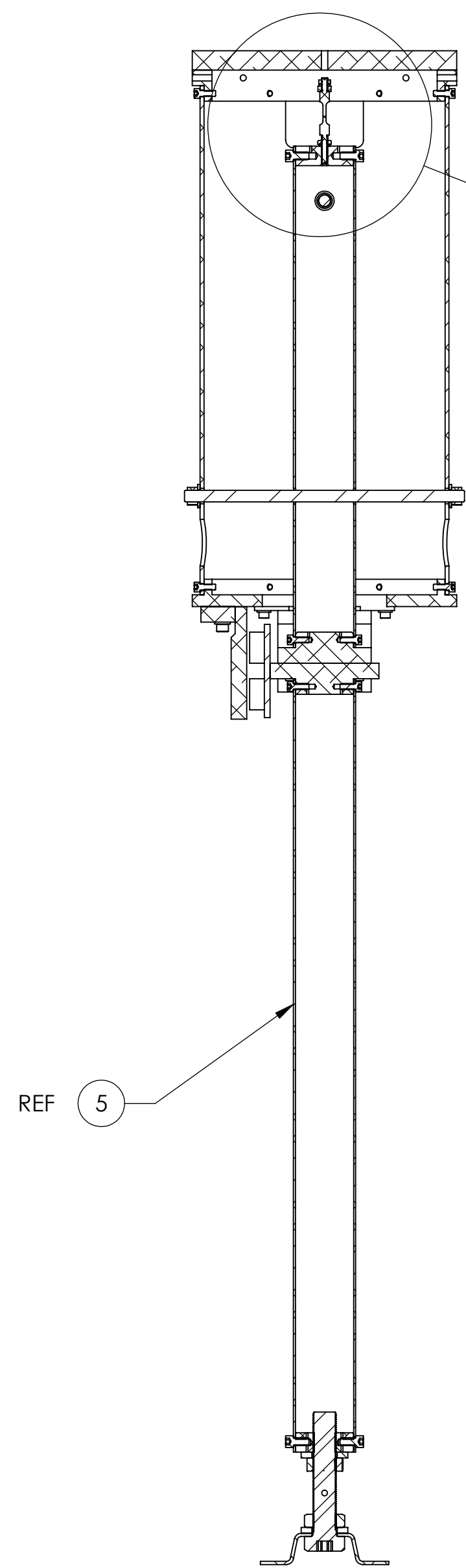
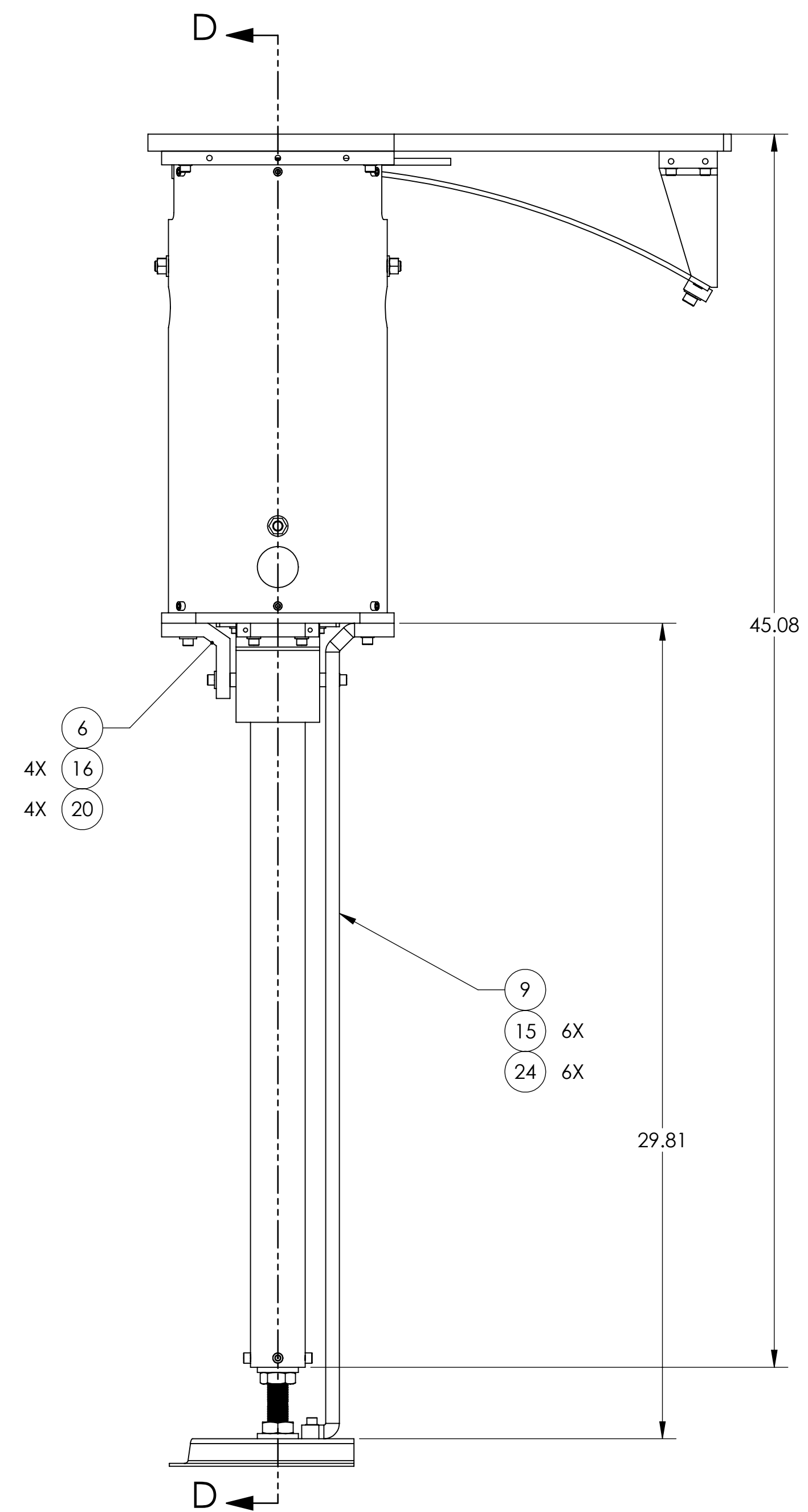
SECTION C-C
SCALE 1 : 1



UPPER TUBE ALIGNMENT TOOLING

LIGO CALIFORNIA INSTITUTE OF TECHNOLOGY MASSACHUSETTS INSTITUTE OF TECHNOLOGY		REV.
SIZE DWG. NO.	D1101897	v1
SCALE: 1:12	PROJECTION:	SHEET 2 OF 3

D1101897_AudiGO_ACS_SLC_Fold_Mirror_Beam_Dump_Suspension Assy_PART PDM_REV: X:020_DRAWING PDM_REV: X:010



LOWER TUBE LENGTH/
ALIGNMENT TOOLING

LIGO CALIFORNIA INSTITUTE OF TECHNOLOGY MASSACHUSETTS INSTITUTE OF TECHNOLOGY		REV.
SIZE DWG. NO.	D1101897	v1
SCALE: 1:12	PROJECTION:	SHEET 3 OF 3

D:\101897_Adi\GO_ACS_SLC_Fold_Mirror_Beam_Dump_Suspension_Asly_PAEI_PDM_REV_X-020_DRAWING_PDM_REV_X-010