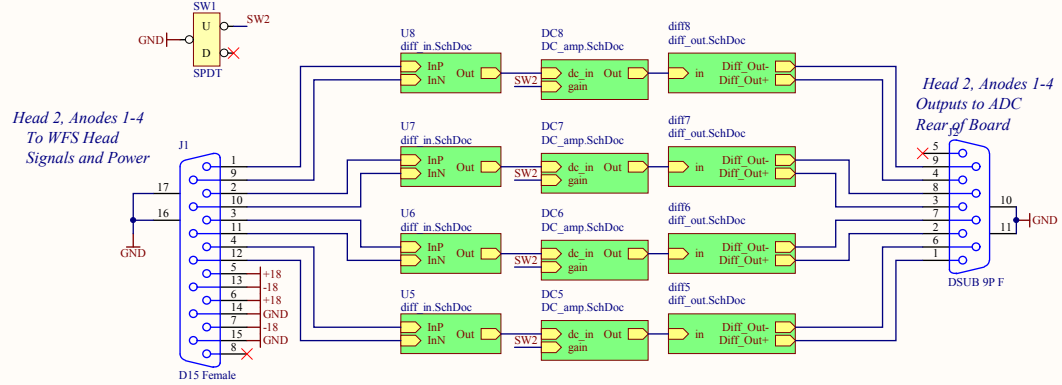
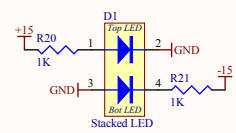


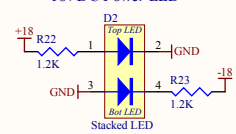
**Gain Switch (Front Panel)**



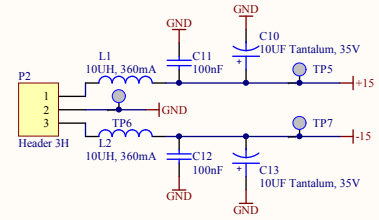
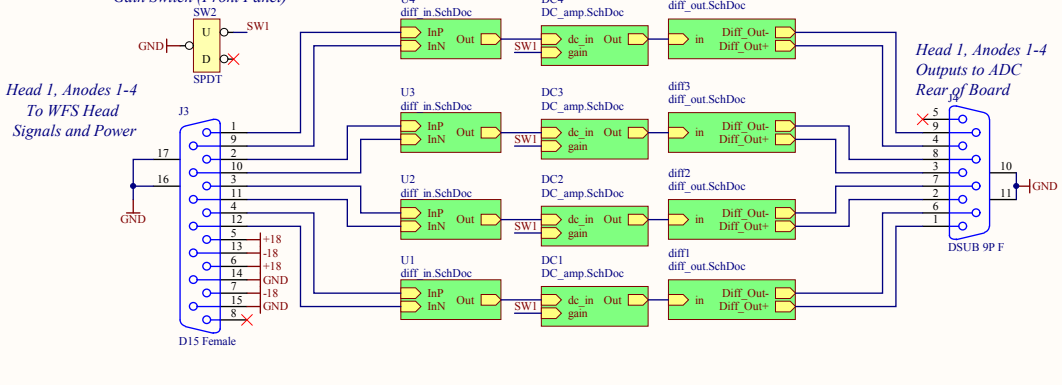
**15VDC Power LED**



**18VDC Power LED**



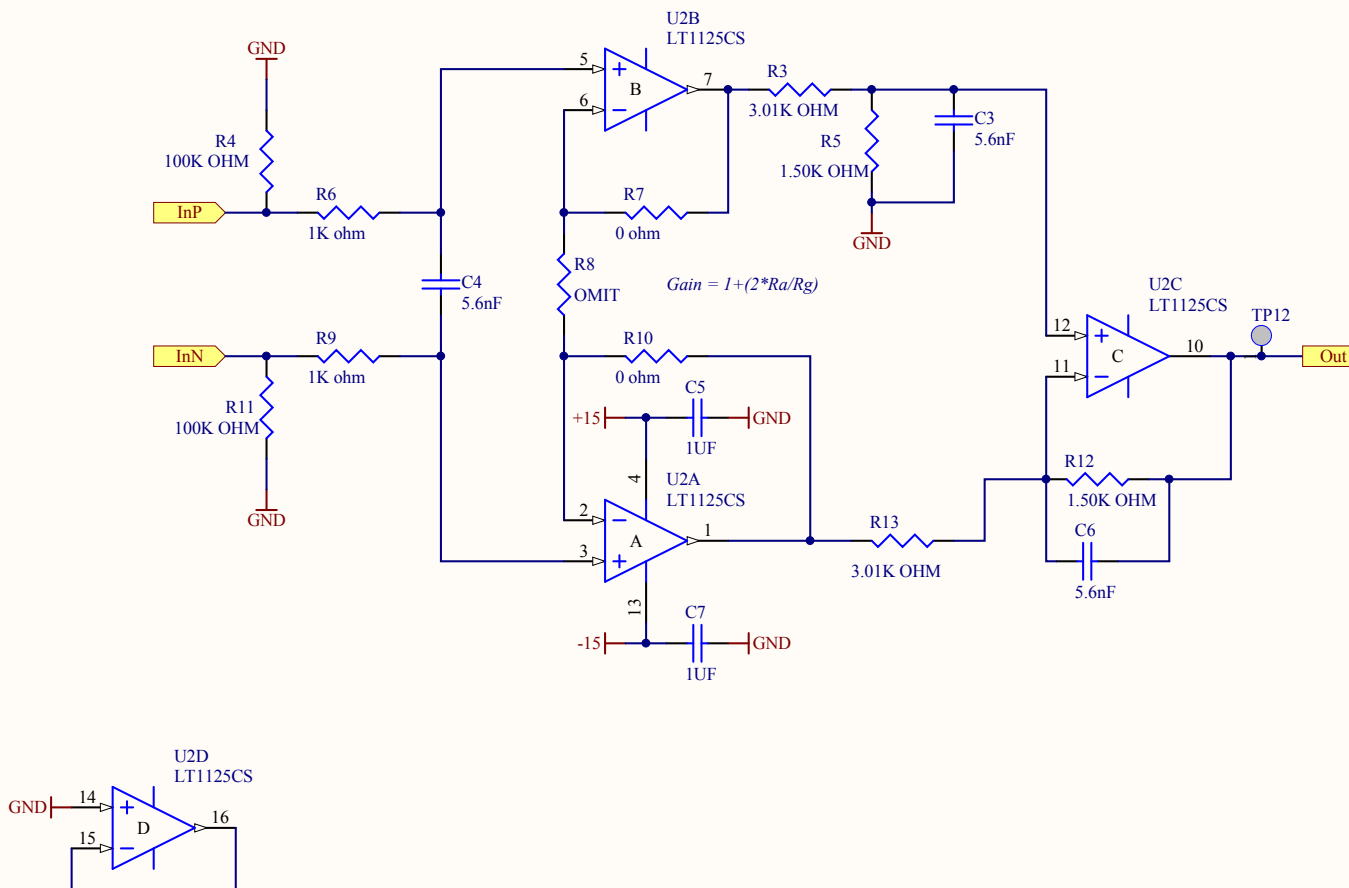
**Gain Switch (Front Panel)**



**Power To Serve Remote Heads**

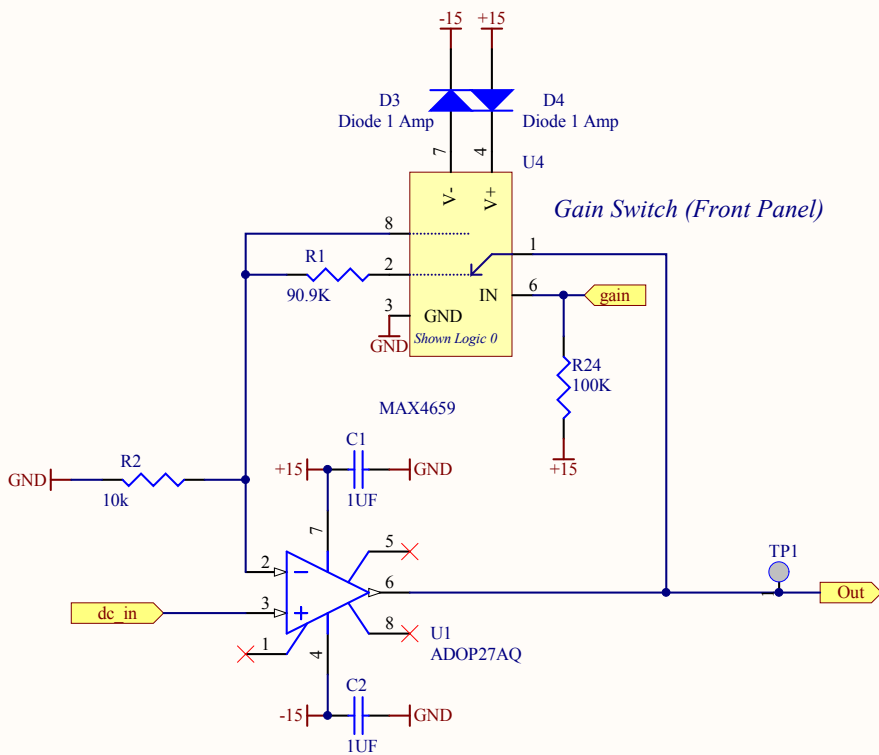


Title		Last Edited: 3 Oct. 2011	
<b>aLIGO Wavefront Sensor Interface Board</b>		LIGO Laboratory California Institute of Technology Massachusetts Institute of Technology	
Size: B	DCC Number: D1101865	Revision: v1	Engineer: R. Abbott
File: C:\Rich's Files\Mycafiles\ISC\aligo WFS Interface\WFS Interface v1\WFS Interface top.SchDoc		Date: 10/5/2011	Time: 12:29:57 PM
		Sheet 1 of 4	



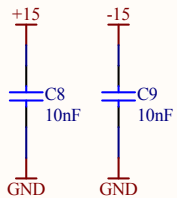
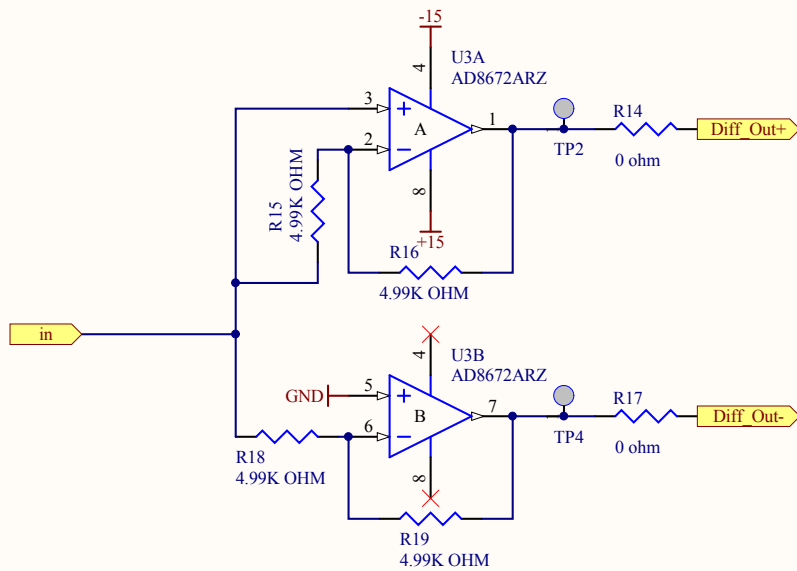
Last Edited: 3 Oct. 2011

Title		LIGO Laboratory California Institute of Technology Massachusetts Institute of Technology		LIGO
<b>Differential Input Stage</b>				
Size: A	DCC Number: D1101865	Revision: v1	Engineer: R. Abbott	Date: 10/5/2011
File: C:\Rich's Files\Mycadfiles\ISCaLIGO_WFS_Interface\WFS Interface v1\diff in.SchDoc				Time: 12:29:57 PM
				Sheet 2 of 4



Last Edited: 3 Oct. 2011

Title <b>DC Amplifier</b>		LIGO Laboratory California Institute of Technology Massachusetts Institute of Technology		LIGO	
Size: A	DCC Number: D1101865	Revision: v1	Engineer: R. Abbott	Date: 10/5/2011	
File: C:\Rich's Files\Mycadfiles\ISCa\LIGO_WFS_Interface\WFS Interface v1\DC amp.SchDoc				Time: 12:29:57 PM	Sheet 3 of 4



Last Edited: 3 Oct. 2011

Title		<i>Differential Output Stage</i>		LIGO Laboratory California Institute of Technology Massachusetts Institute of Technology		LIGO	
Size: A	DCC Number: D1101865	Revision: v1	Engineer: R. Abbott	Date: 10/5/2011	Time: 12:29:58 PM		
File: C:\Rich's Files\Mycadfiles\ISCa\LIGO_WFS_Interface\WFS Interface v1\diff_out.SchDoc				Sheet 4 of 4			

# aLIGO Wavefront Sensor PD Interface D1101865-v1

Serial Number

Head 1 Gain Switch

Head 1 Interface

Head 2 Interface

Head 2 Gain Switch

Head 1, Anode 1-4 Out

Head 2, Anode 1-4 Out

Raw Power Input To Heads

DC Power Input

