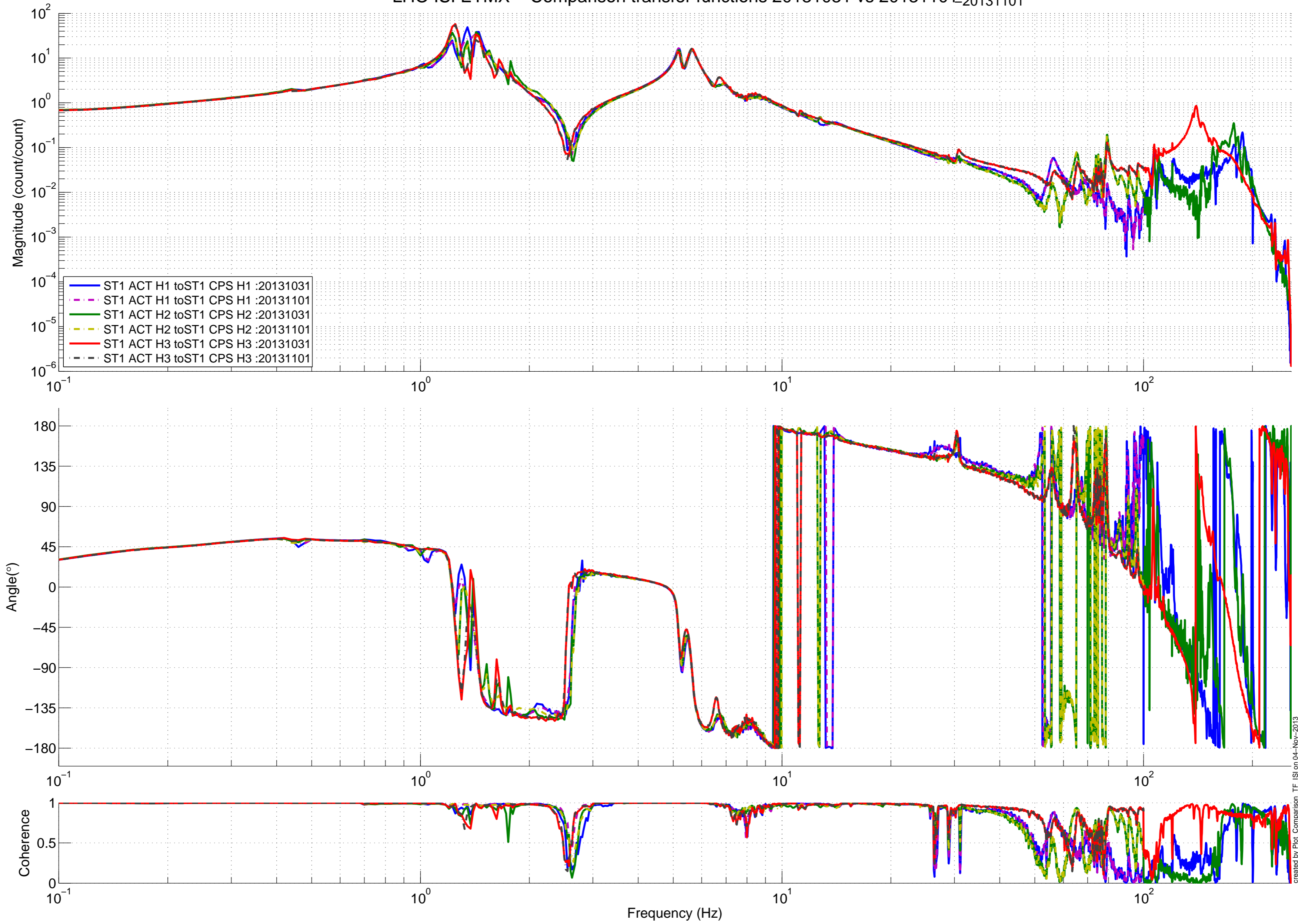
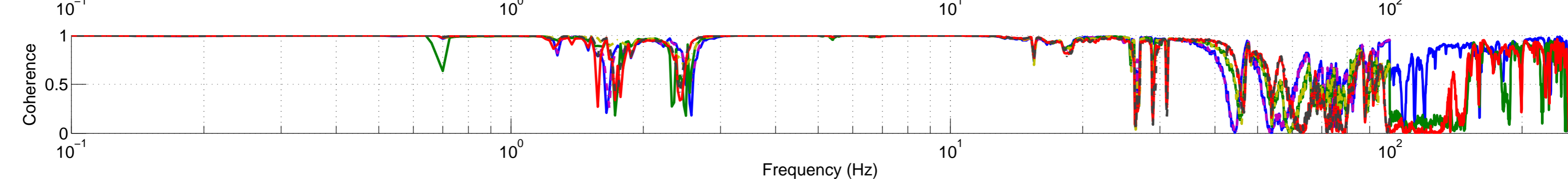
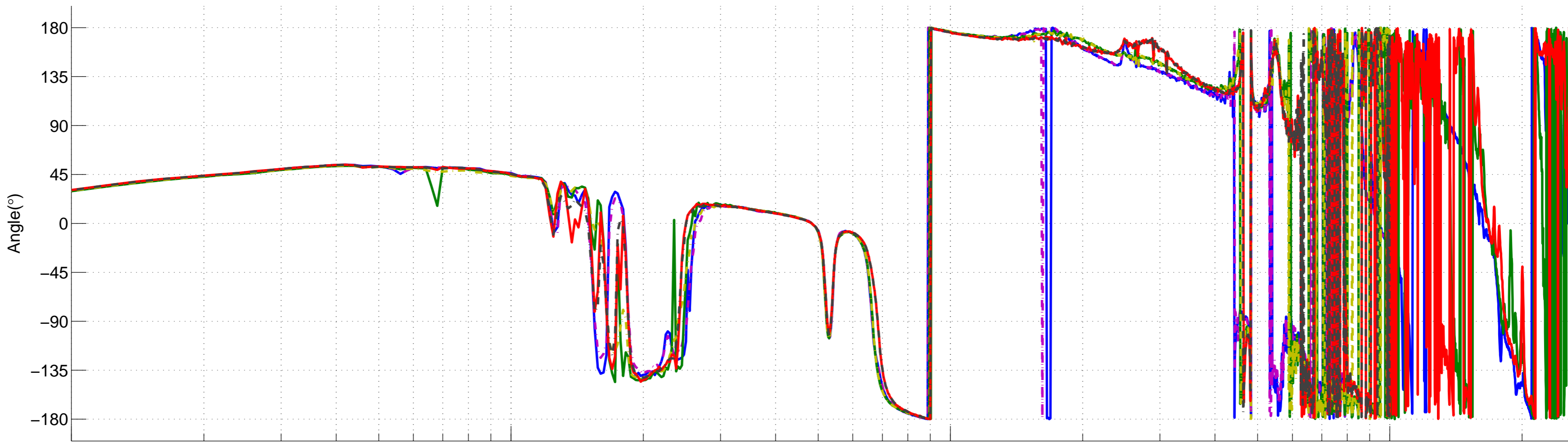
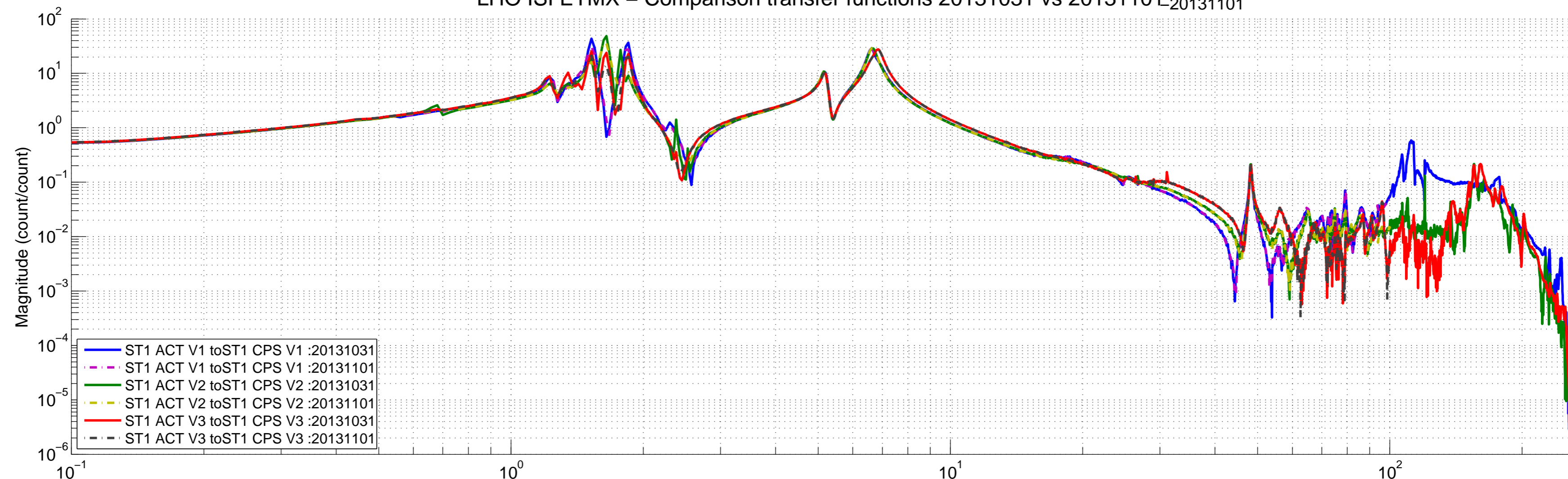


### LHO ISI ETMX - Comparison transfer functions 20131031 vs 20131101



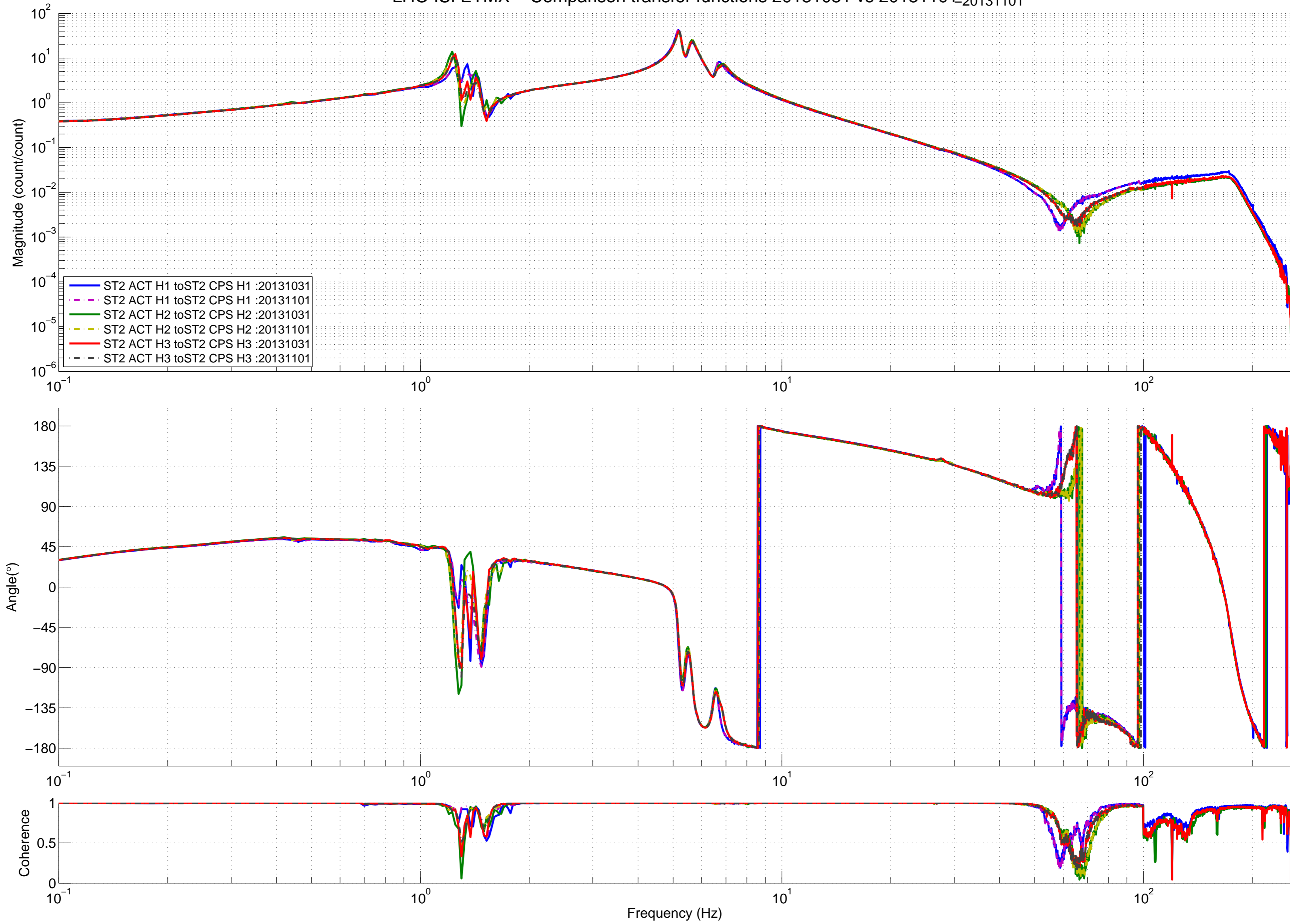
LHO ISI ETMX – Comparison transfer functions 20131031 vs 20131101

H1-ETMX – ISI-BSC9 – ISI Undamped – ETMX unlocked and damped, TMSX  
-20131031  
H1-ETMX – ISI-BSC9 – ISI Undamped – ETMX unlocked and damped, TMSX  
-20131101



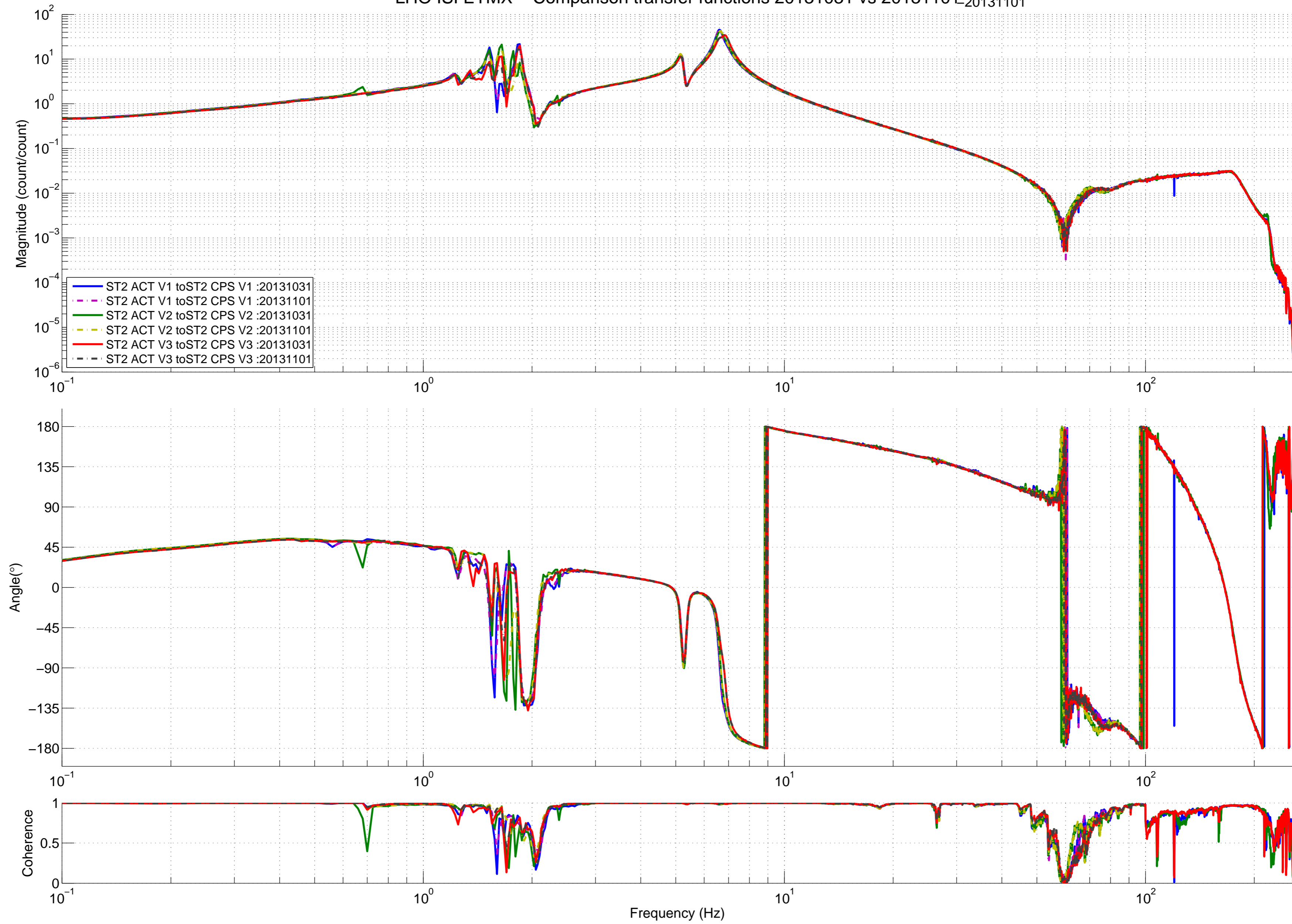
created by Plot\_Comparison\_TF\_ISI on 04-Nov-2013

### LHO ISI ETMX - Comparison transfer functions 20131031 vs 20131101

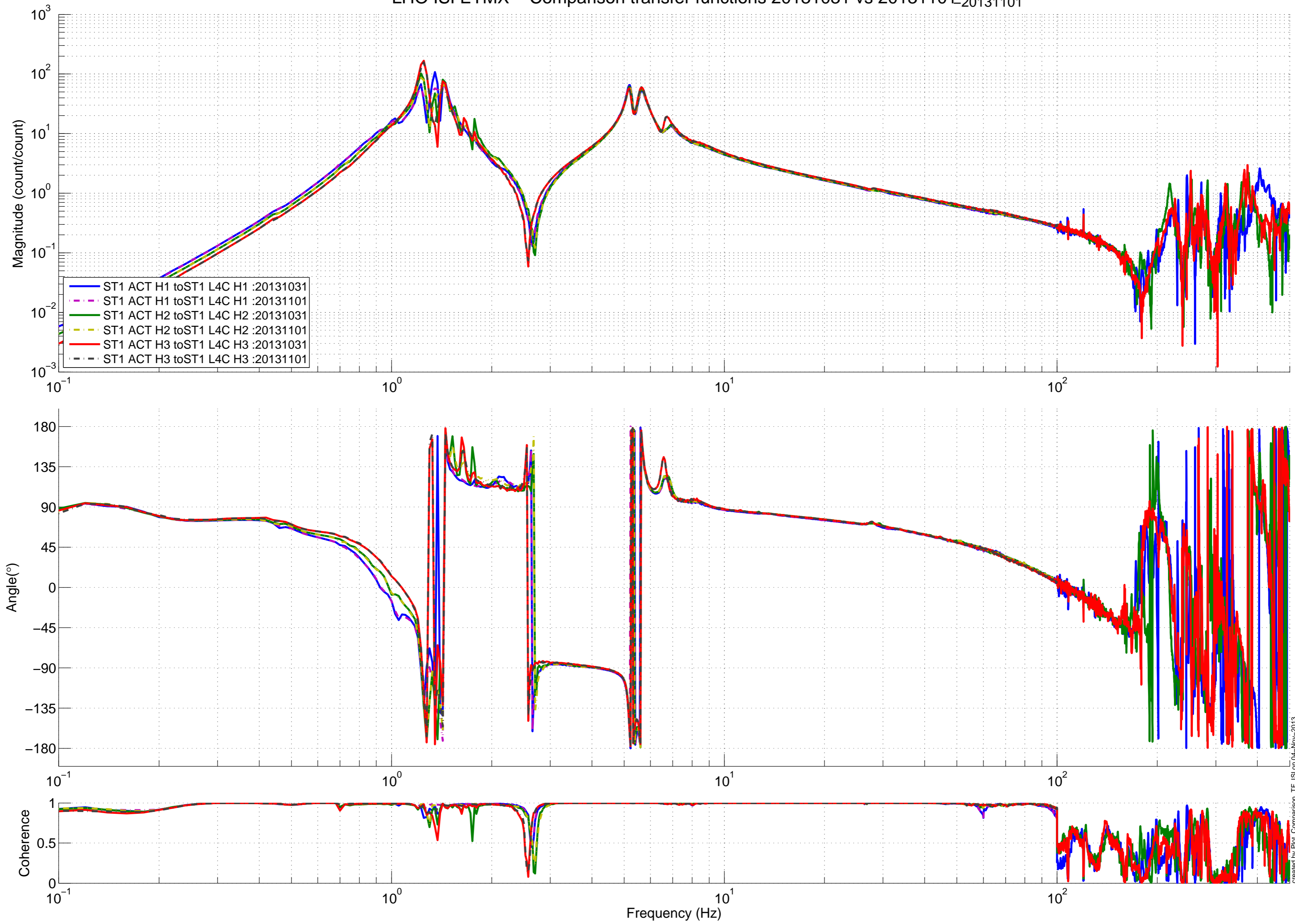




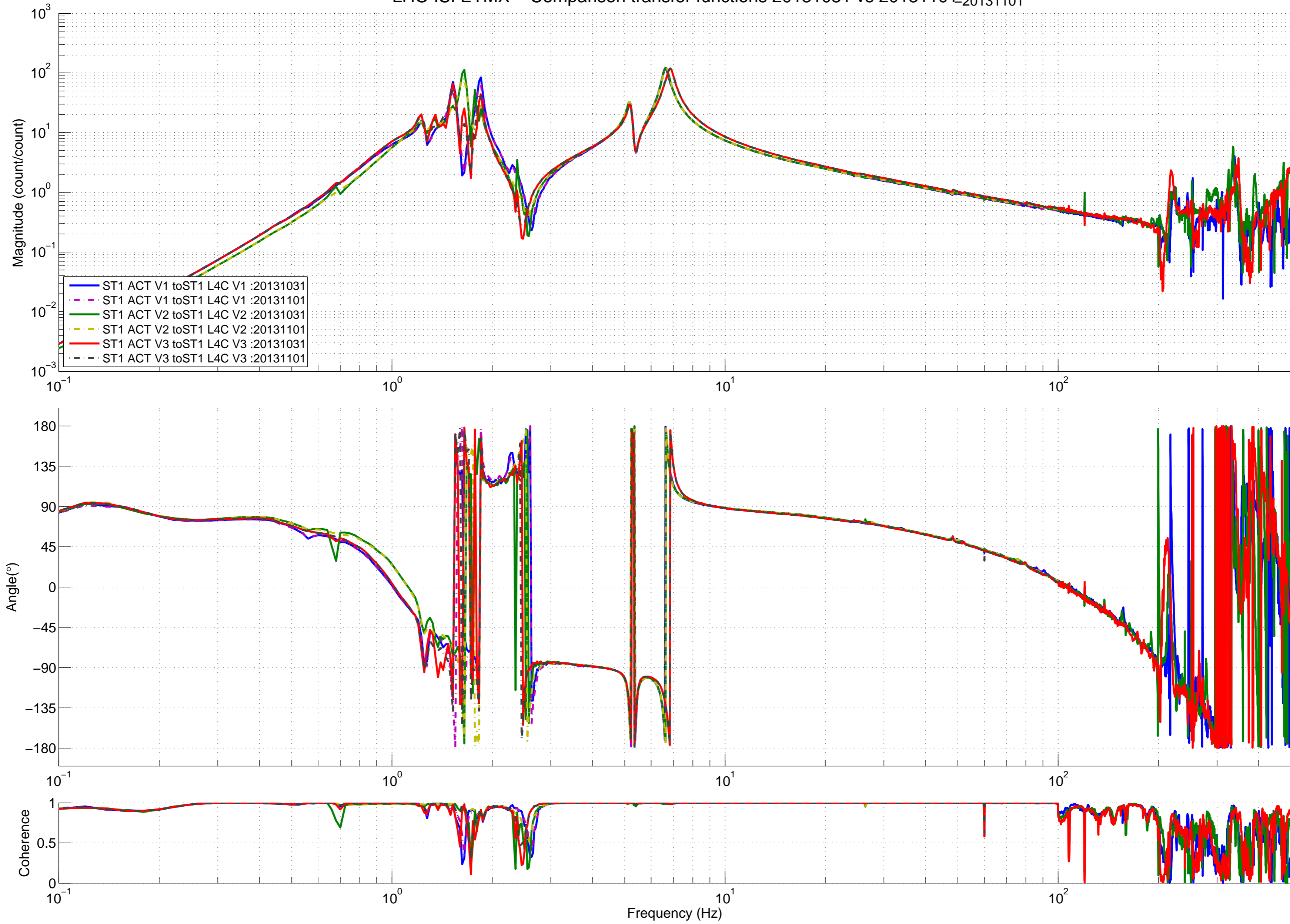
### LHO ISI ETMX - Comparison transfer functions 20131031 vs 20131101



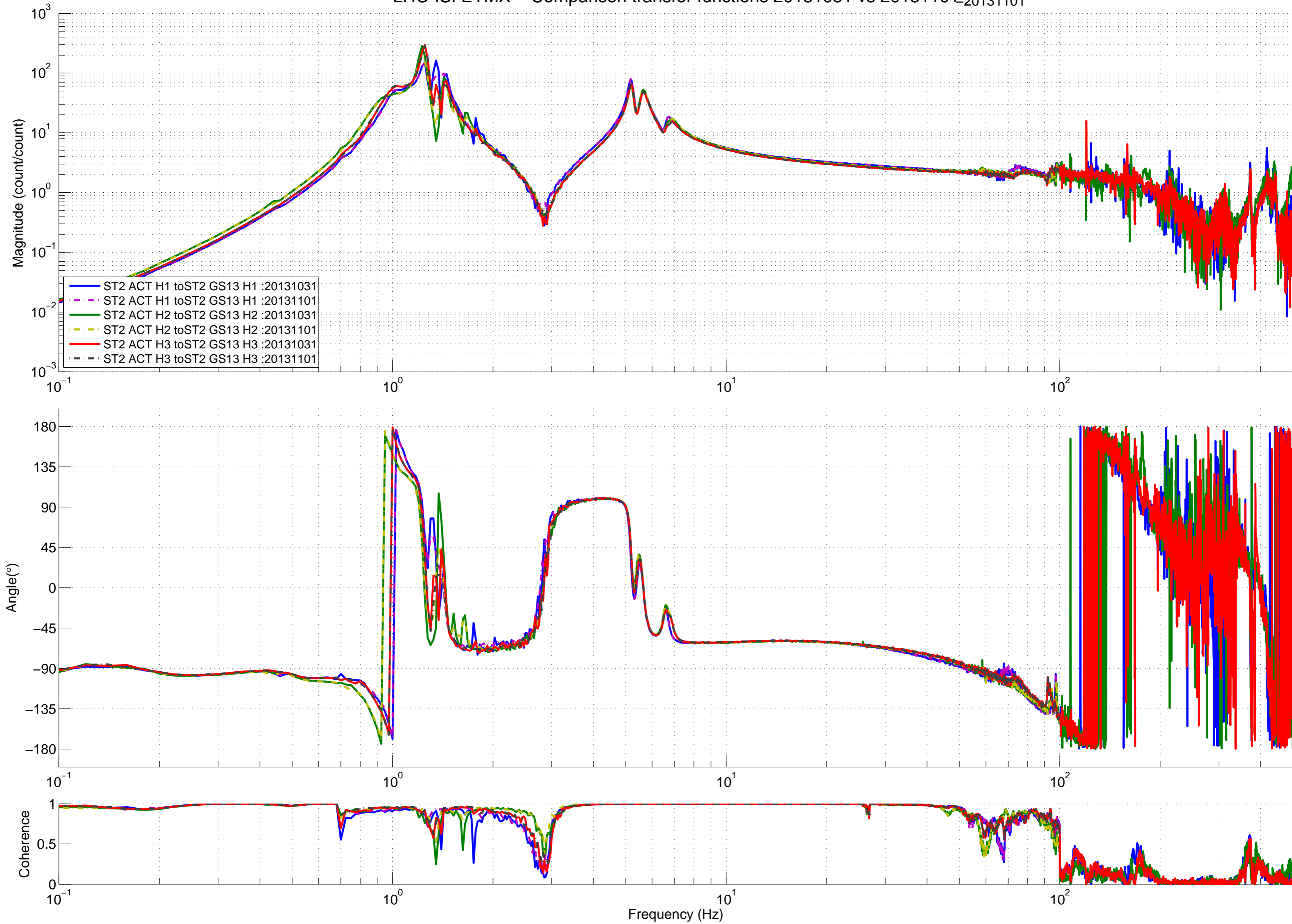
### LHO ISI ETMX - Comparison transfer functions 20131031 vs 20131101



### LHO ISI ETMX - Comparison transfer functions 20131031 vs 20131101

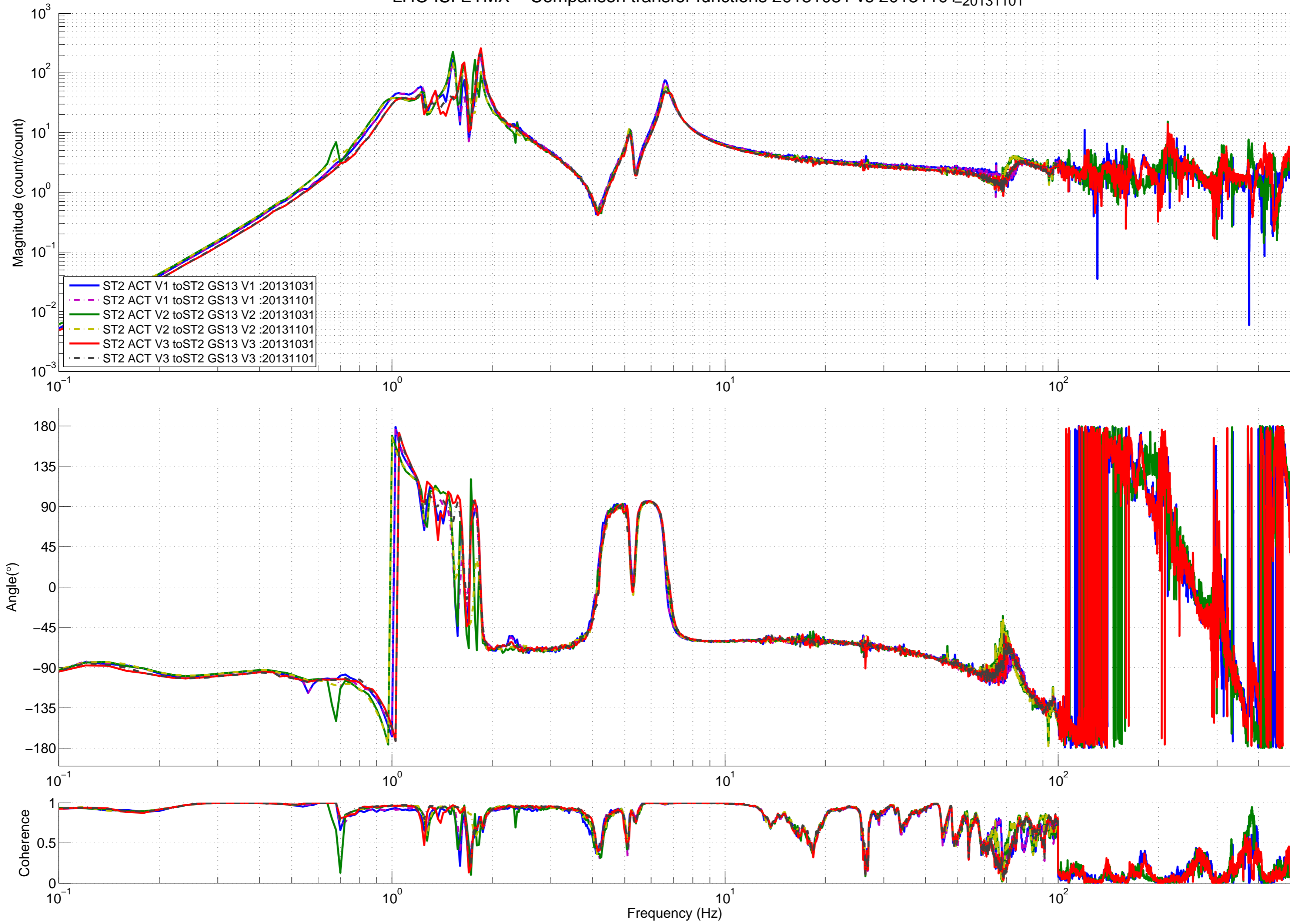


### LHO ISI ETMX - Comparison transfer functions 20131031 vs 20131101



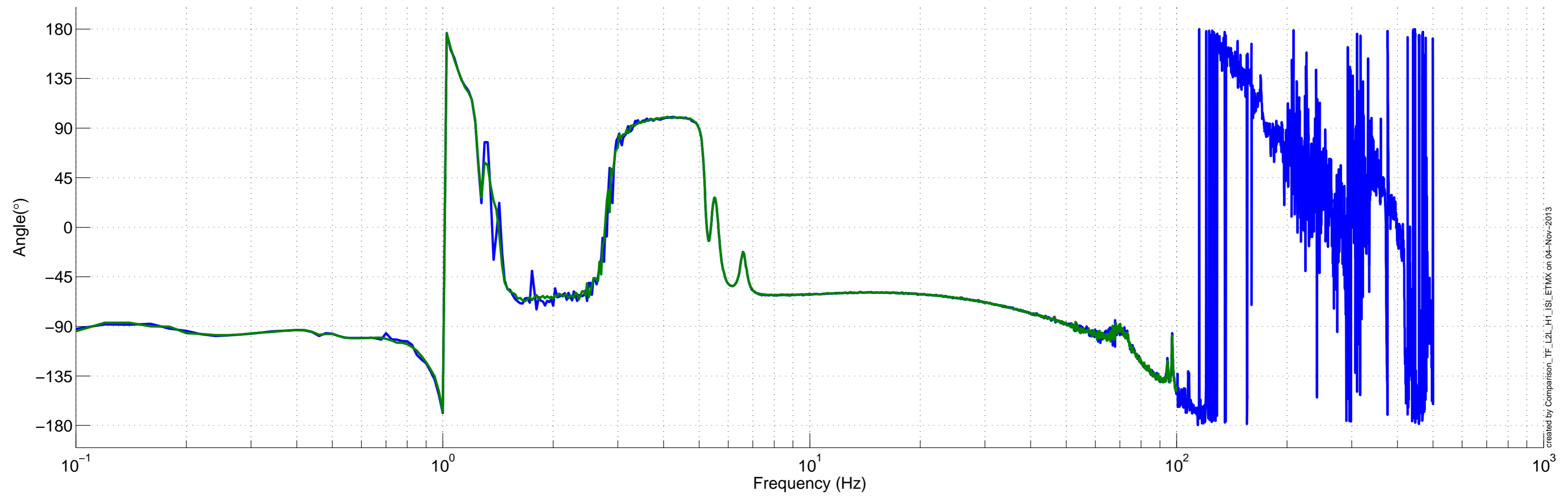
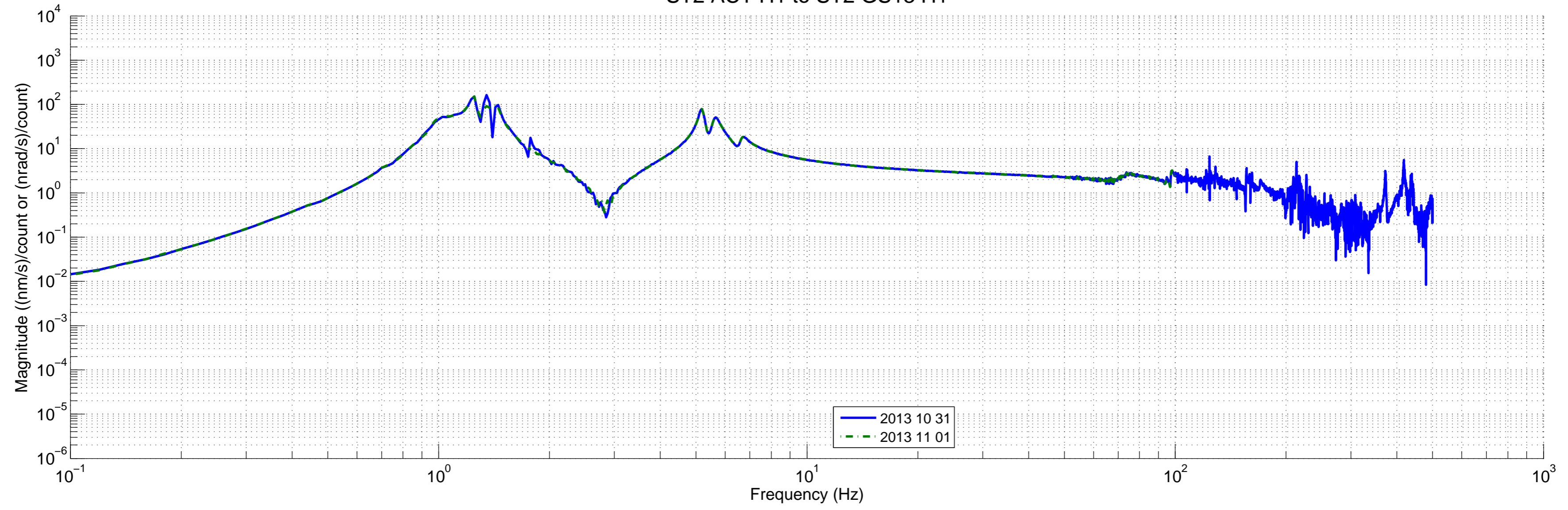


### LHO ISI ETMX - Comparison transfer functions 20131031 vs 20131101

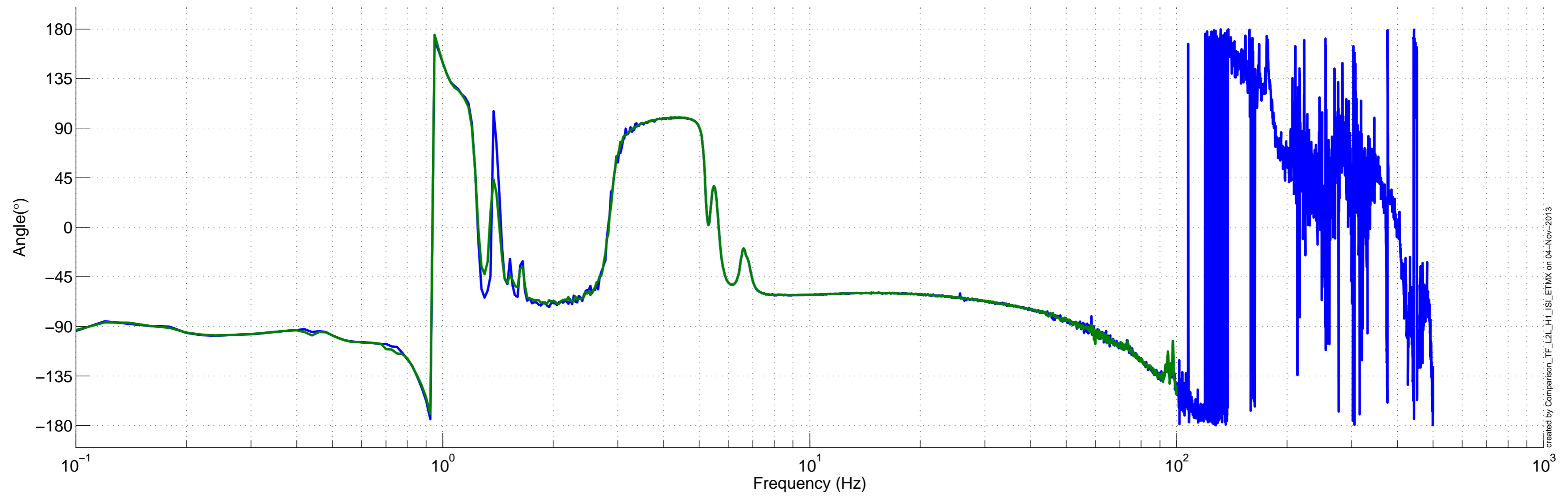
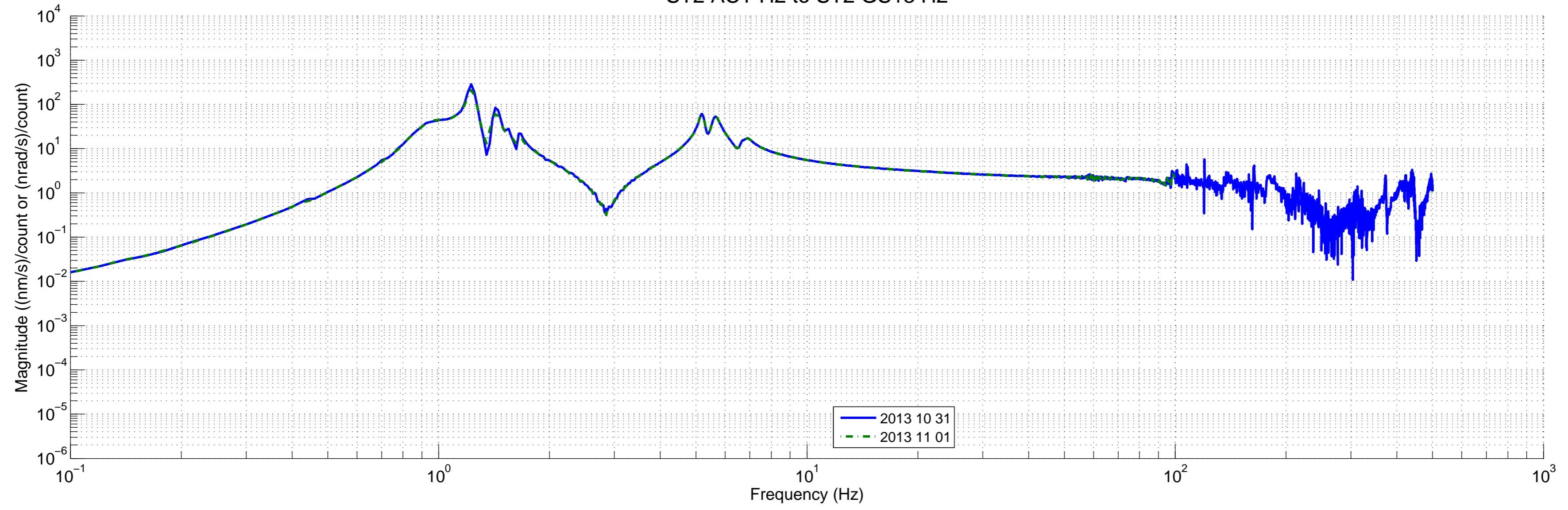




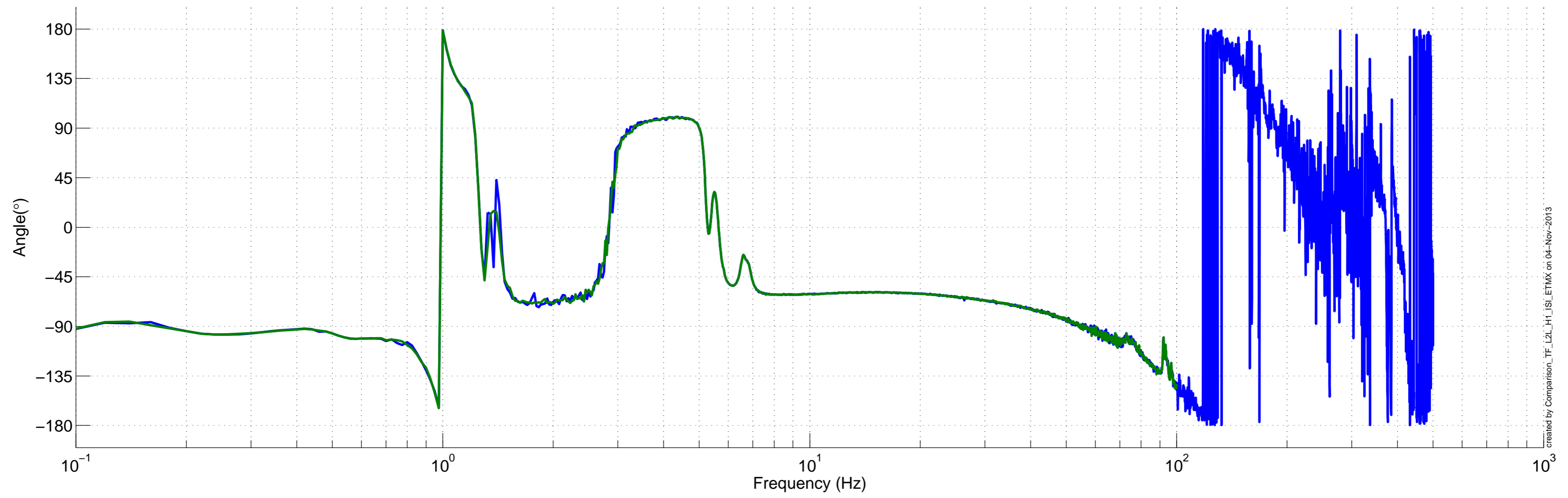
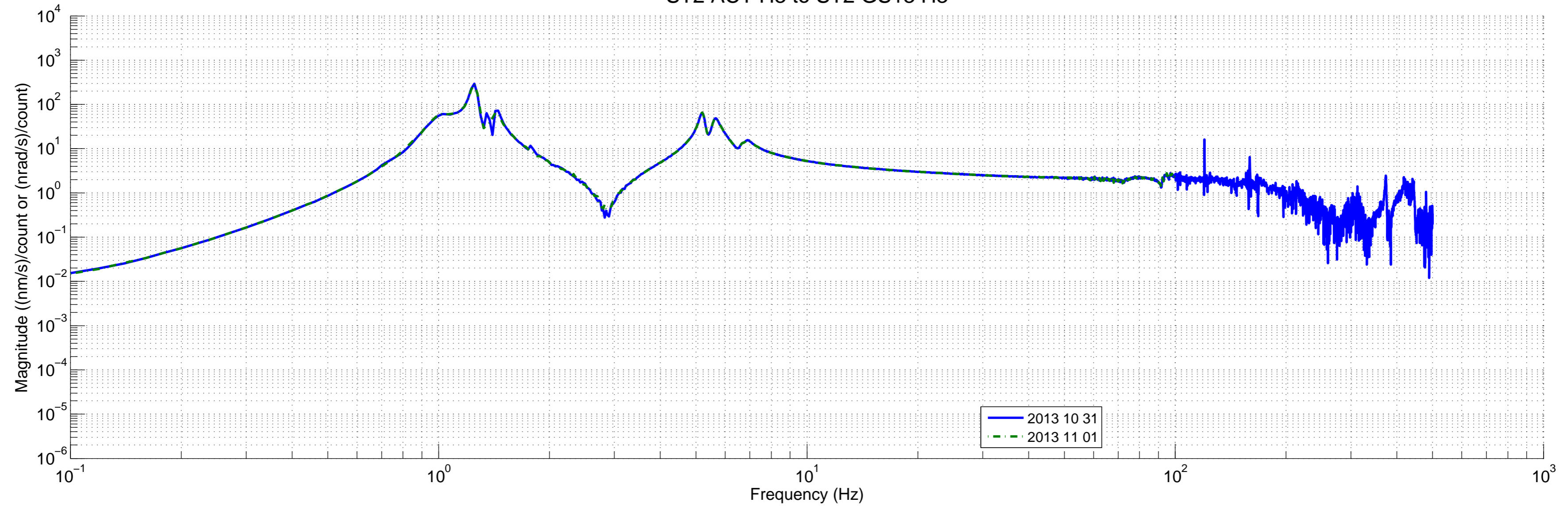
### ST2 ACT H1 to ST2 GS13 H1



### ST2 ACT H2 to ST2 GS13 H2

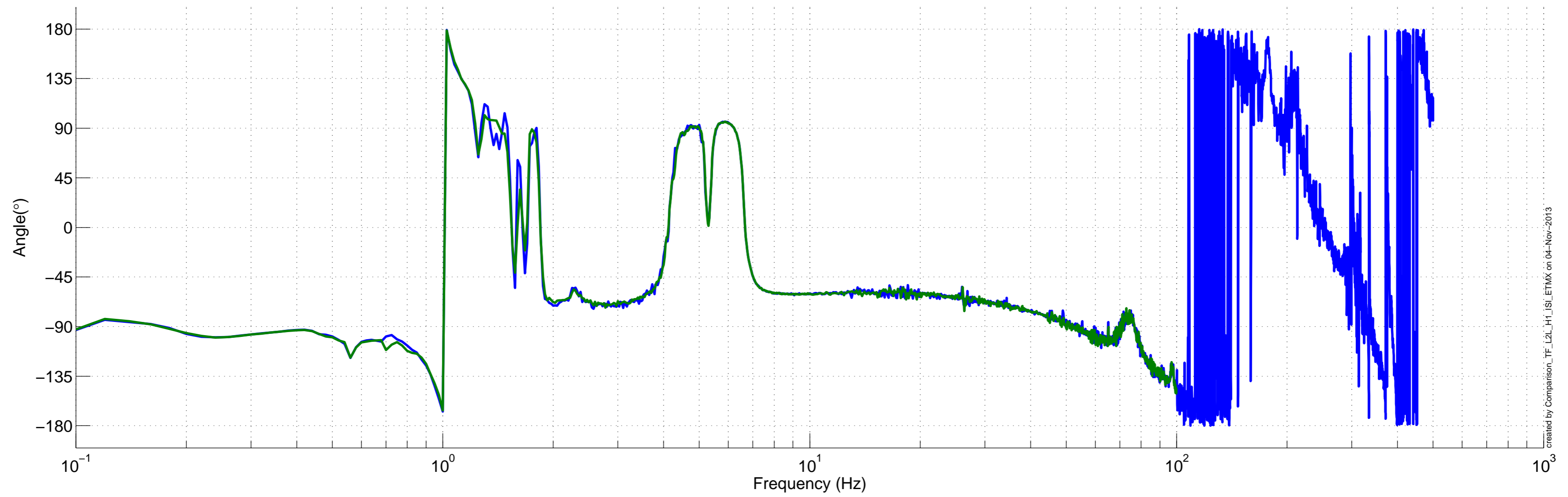
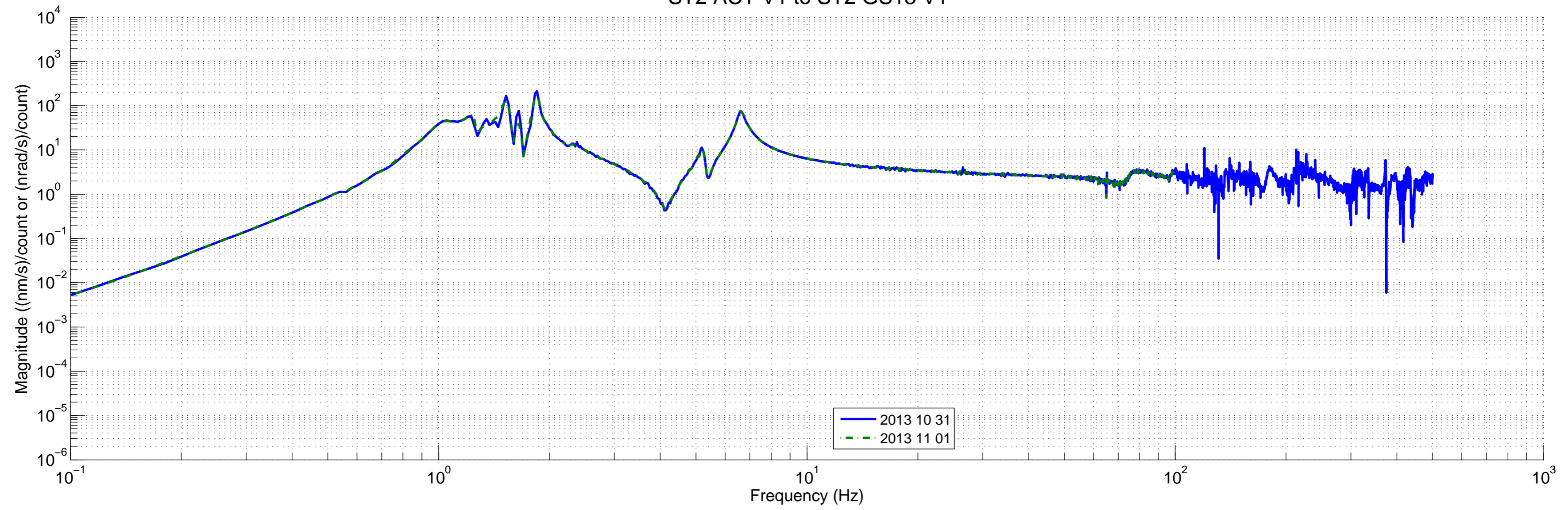


### ST2 ACT H3 to ST2 GS13 H3

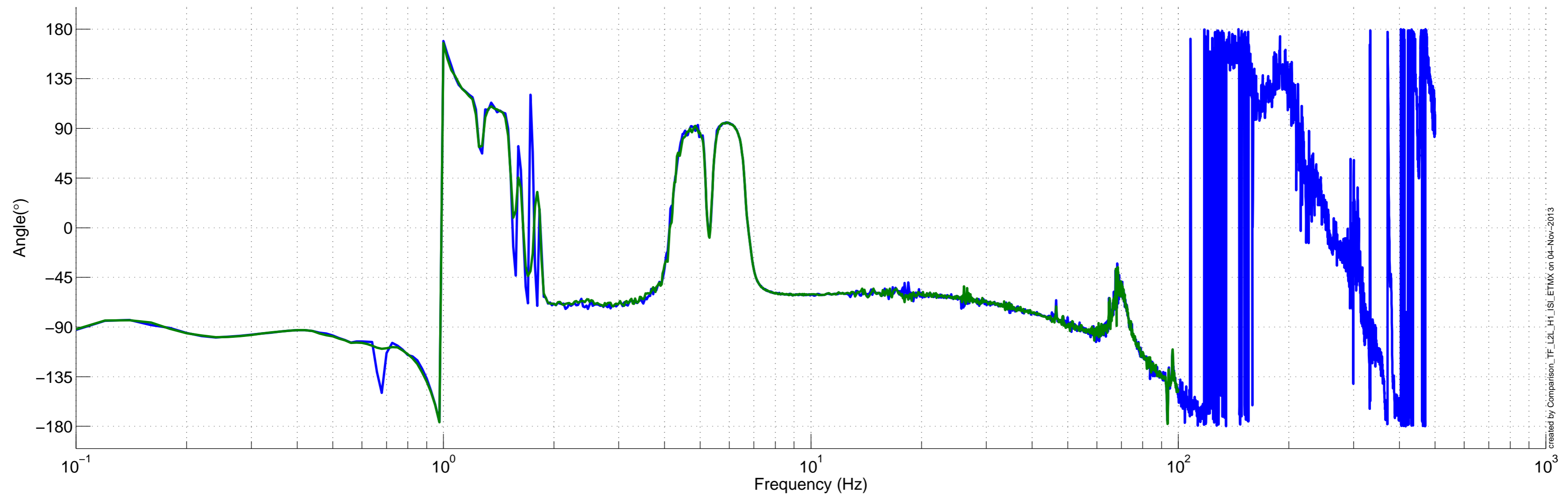
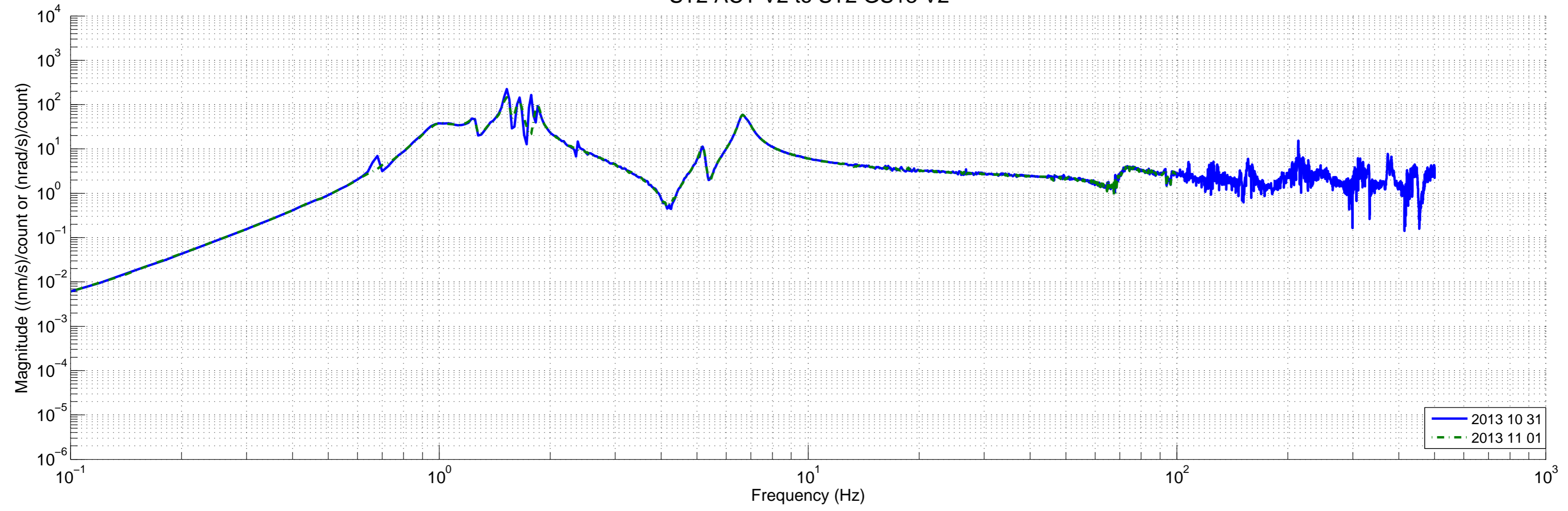




### ST2 ACT V1 to ST2 GS13 V1



### ST2 ACT V2 to ST2 GS13 V2



### ST2 ACT V3 to ST2 GS13 V3

