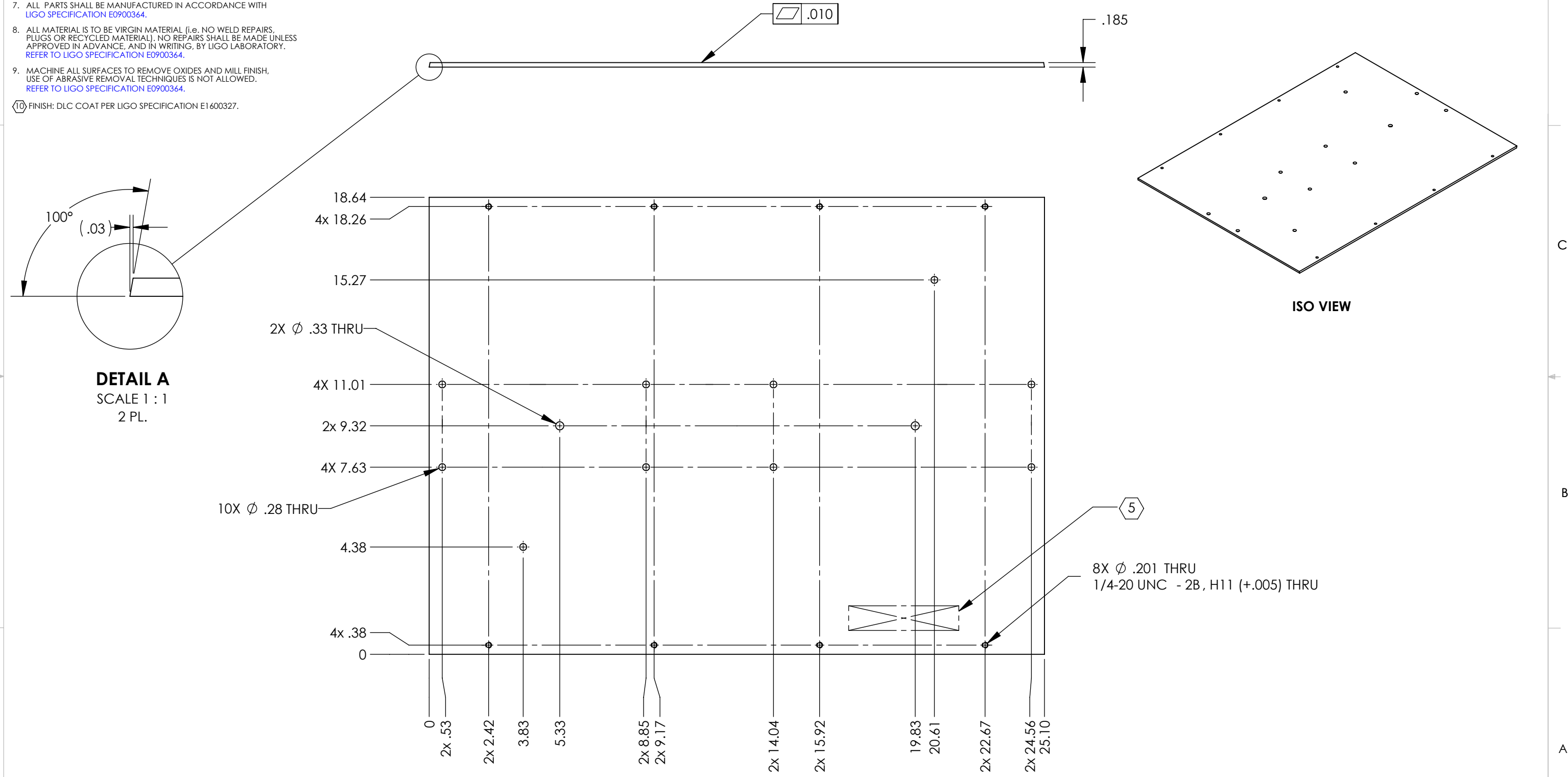


D1101805_alIGO ITM Elliptical Baffle Top-Bottom Skin, PART PDM REV: X-042, DRAWING PDM REV: X-030

REV.	DATE	DCN #	DRAWING TREE #
v1	07 OCT 2011	E1101007	-
v4	15 JUN 2017	E1700205-x0	-
-	-	-	-

- NOTES CONTINUED:**
- 5. SCRIBE, ENGRAVE (A VIBRATORY TOOL MAY BE USED), LASER MARK OR MECHANICALLY STAMP (NO INKS OR DYES) DRAWING PART NUMBER, REVISION (AND VARIANT OR "TYPE" IF APPLICABLE) ON NOTED SURFACE OF PART FOLLOWED ON THE NEXT LINE WITH A THREE DIGIT SERIAL NUMBER. SERIAL NUMBERS START AT 001 FOR THE FIRST ARTICLE AND PROCEED CONSECUTIVELY. USE MINIMUM 0.12" HIGH CHARACTERS. UNLESS THE SIZE OF THE PART DICTATES SMALLER CHARACTERS. EXAMPLE: DXXXXXX-VY, TYPE-XX, S/N XXX
 - 6. APPROXIMATE WEIGHT = 8.406 LBS
 - 7. ALL PARTS SHALL BE MANUFACTURED IN ACCORDANCE WITH LIGO SPECIFICATION E0900364.
 - 8. ALL MATERIAL IS TO BE VIRGIN MATERIAL (i.e. NO WELD REPAIRS, PLUGS OR RECYCLED MATERIAL). NO REPAIRS SHALL BE MADE UNLESS APPROVED IN ADVANCE, AND IN WRITING, BY LIGO LABORATORY. REFER TO LIGO SPECIFICATION E0900364.
 - 9. MACHINE ALL SURFACES TO REMOVE OXIDES AND MILL FINISH, USE OF ABRASIVE REMOVAL TECHNIQUES IS NOT ALLOWED. REFER TO LIGO SPECIFICATION E0900364.
 - 10. FINISH: DLC COAT PER LIGO SPECIFICATION E1600327.



NOTES AND TOLERANCES: (UNLESS OTHERWISE SPECIFIED)				LIGO CALIFORNIA INSTITUTE OF TECHNOLOGY MASSACHUSETTS INSTITUTE OF TECHNOLOGY		PART NAME	
DIMENSIONS ARE IN INCHES TOLERANCES: .XX ± .02 .XXX ± .005 ANGULAR ± 1.0°				1. INTERPRET DRAWING PER ASME Y14.5-1994. 2. REMOVE ALL SHARP EDGES, .005-.015, FOR MACHINED PARTS. 3. DO NOT SCALE FROM DRAWING. 4. ALL MACHINING FLUIDS MUST BE FULLY SYNTHETIC, FULLY WATER SOLUBLE AND FREE OF SULFUR, SILICONE, AND CHLORINE.		alIGO ITM ELLIPTICAL BAFFLE TOP-BOTTOM SKIN	
MATERIAL 6061-T6 Al		FINISH 63 μinch		SYSTEM ADVANCED LIGO		SUB-SYSTEM AOS	
NEXT ASSY D1101806				DESIGNER H. KELMAN		SIZE DWG. NO. B D1101805	
				DRAFTER J. TERRAZAS		REV. v4	
				CHECKER L. AUSTIN		SCALE: 1:8	
				APPROVAL M. SMITH		PROJECTION:	
						SHEET 1 OF 1	