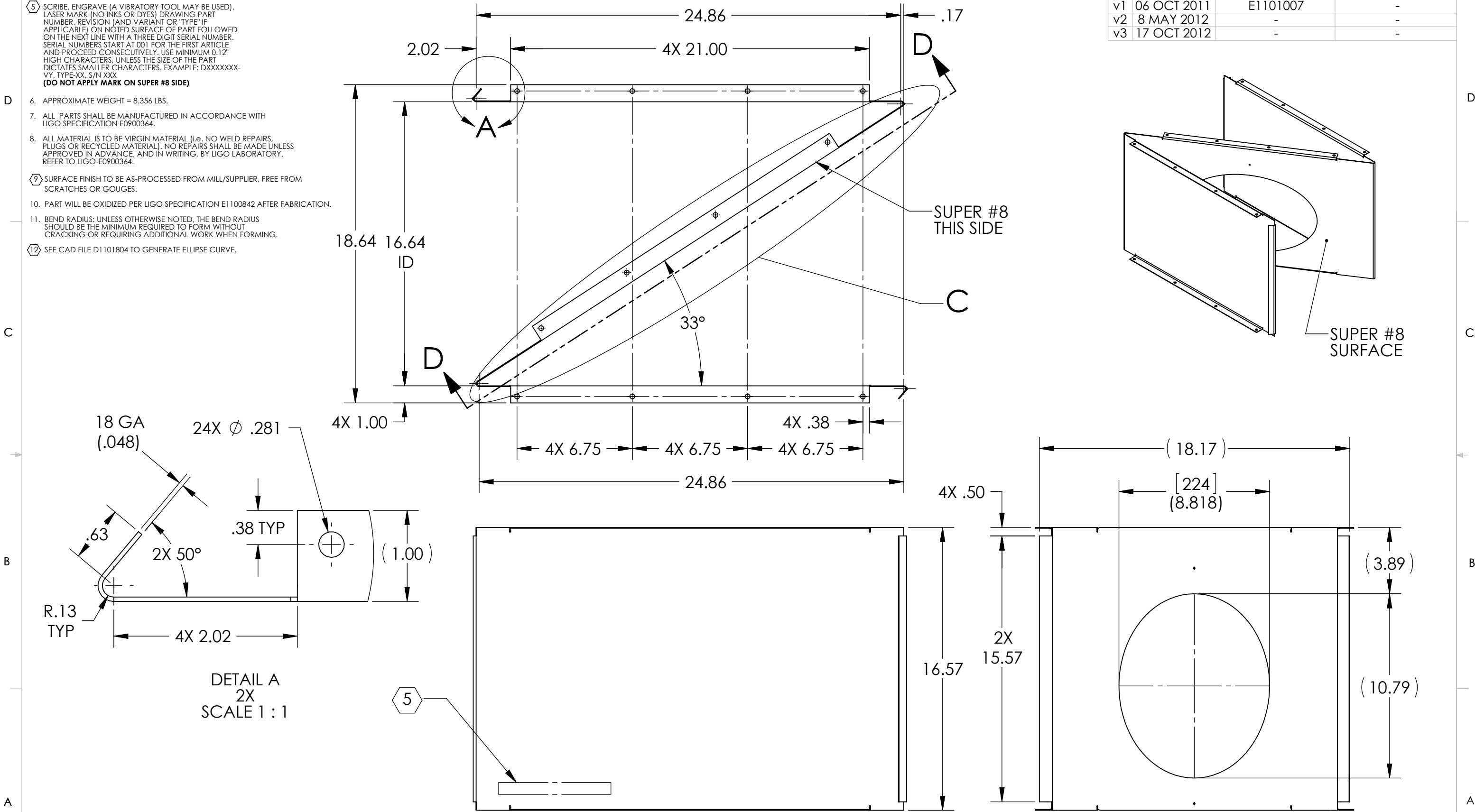


NOTES CONTINUED:  
 5. SCRIBE, ENGRAVE (A VIBRATORY TOOL MAY BE USED), LASER MARK (NO INKS OR DYES) DRAWING PART NUMBER, REVISION (AND VARIANT OR "TYPE" IF APPLICABLE) ON NOTED SURFACE OF PART FOLLOWED ON THE NEXT LINE WITH A THREE DIGIT SERIAL NUMBER. SERIAL NUMBERS START AT 001 FOR THE FIRST ARTICLE AND PROCEED CONSECUTIVELY. USE MINIMUM 0.12" HIGH CHARACTERS, UNLESS THE SIZE OF THE PART DICTATES SMALLER CHARACTERS. EXAMPLE: DXXXXXX-VY, TYPE-XX, S/N XXX  
 (DO NOT APPLY MARK ON SUPER #8 SIDE)

- 6. APPROXIMATE WEIGHT = 8.356 LBS.
- 7. ALL PARTS SHALL BE MANUFACTURED IN ACCORDANCE WITH LIGO SPECIFICATION E0900364.
- 8. ALL MATERIAL IS TO BE VIRGIN MATERIAL (i.e. NO WELD REPAIRS, PLUGS OR RECYCLED MATERIAL). NO REPAIRS SHALL BE MADE UNLESS APPROVED IN ADVANCE, AND IN WRITING, BY LIGO LABORATORY. REFER TO LIGO-E0900364.
- 9. SURFACE FINISH TO BE AS-PROCESSED FROM MILL/SUPPLIER, FREE FROM SCRATCHES OR GOUGES.
- 10. PART WILL BE OXIDIZED PER LIGO SPECIFICATION E1100842 AFTER FABRICATION.
- 11. BEND RADIUS: UNLESS OTHERWISE NOTED, THE BEND RADIUS SHOULD BE THE MINIMUM REQUIRED TO FORM WITHOUT CRACKING OR REQUIRING ADDITIONAL WORK WHEN FORMING.
- 12. SEE CAD FILE D1101804 TO GENERATE ELLIPSE CURVE.

REV.	DATE	DCN #	DRAWING TREE #
v1	06 OCT 2011	E1101007	-
v2	8 MAY 2012	-	-
v3	17 OCT 2012	-	-



D1101804\_01 LIGO ITM Elliptical Baffle Center Skin, PART PDM REV: X-041, DRAWING PDM REV: X-027

**NOTES AND TOLERANCES: (UNLESS OTHERWISE SPECIFIED)**

DIMENSIONS ARE IN INCHES

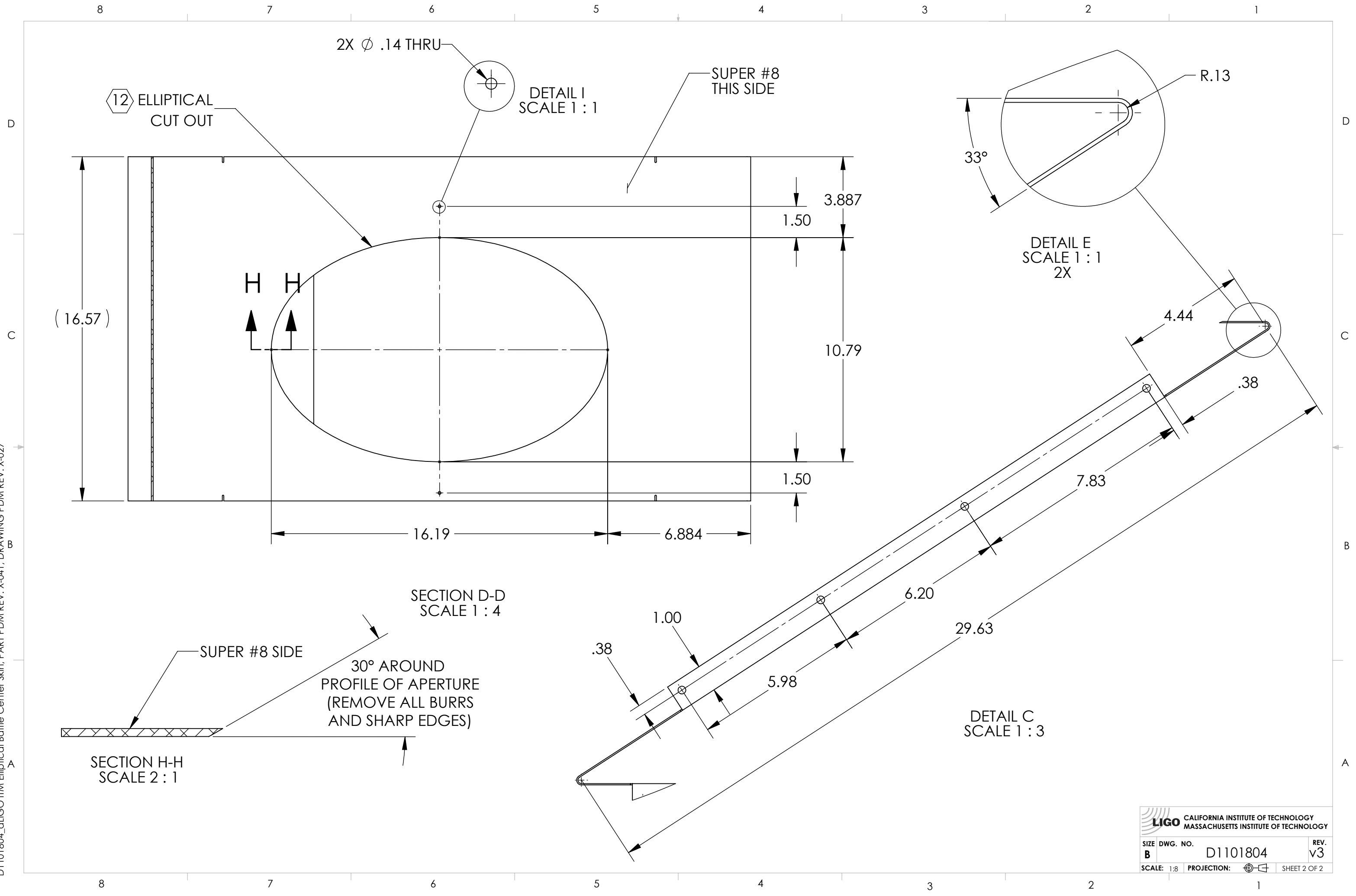
TOLERANCES:  
 .XX ± .02  
 .XXX ± .010  
 ANGULAR ± 1.0°

1. INTERPRET DRAWING PER ASME Y14.5-1994.  
 2. REMOVE ALL SHARP EDGES, .005-.015, FOR MACHINED PARTS. ROUND ALL EDGES APPROXIMATELY R.02 FOR SHEET METAL PARTS.  
 3. DO NOT SCALE FROM DRAWING.  
 4. ALL MACHINING FLUIDS MUST BE FULLY SYNTHETIC, FULLY WATER SOLUBLE AND FREE OF SULFUR, SILICONE, AND CHLORINE.

**MATERIAL** 18 GA 304 SSSL **FINISH** SUPER #8

<b>LIGO</b> CALIFORNIA INSTITUTE OF TECHNOLOGY MASSACHUSETTS INSTITUTE OF TECHNOLOGY		<b>PART NAME</b> aLIGO ITM ELLIPTICAL BAFFLE CENTER SKIN	
<b>SYSTEM</b> ADVANCED LIGO	<b>SUB-SYSTEM</b> AOS	<b>DESIGNER</b> H. KELMAN	<b>DATE</b> 8 MAY 2012
<b>DRAFTER</b> TQ. NGUYEN	<b>CHECKER</b> L. AUSTIN	<b>DATE</b> 4 JUN 2012	<b>DATE</b> 4 JUN 2012
<b>APPROVAL</b> M. SMITH	<b>SCALE:</b> 1:8	<b>PROJECTION:</b>	<b>SHEET 1 OF 2</b>

D1101804\_dLIGO ITM Elliptical Baffle Center Skin, PART PDM REV: X-041, DRAWING PDM REV: X-027



<b>LIGO</b> CALIFORNIA INSTITUTE OF TECHNOLOGY MASSACHUSETTS INSTITUTE OF TECHNOLOGY	
SIZE DWG. NO. <b>B</b>	D1101804
REV. <b>v3</b>	
SCALE: 1:8	PROJECTION:
SHEET 2 OF 2	