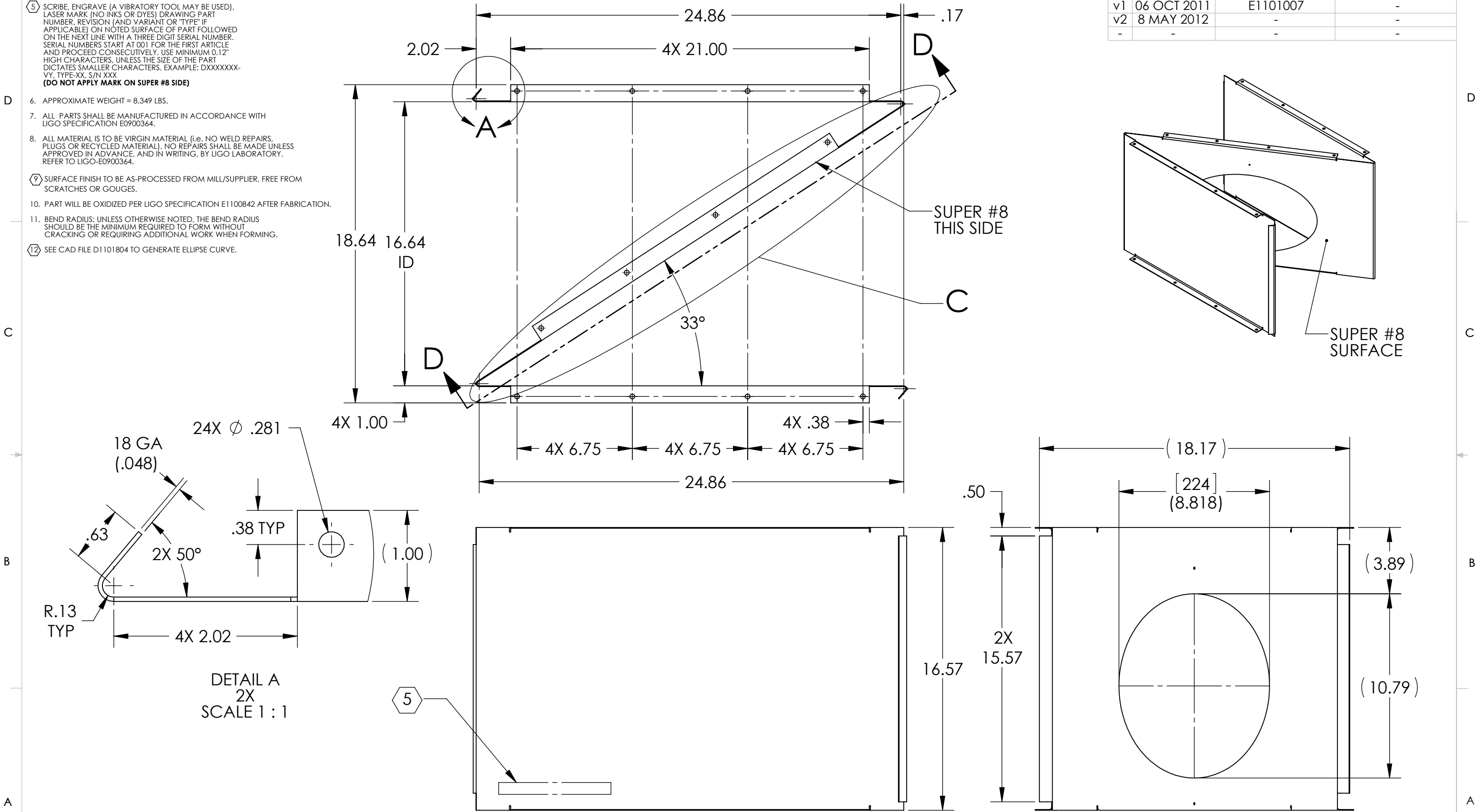


NOTES CONTINUED:
 5. SCRIBE, ENGRAVE (A VIBRATORY TOOL MAY BE USED), LASER MARK (NO INKS OR DYES) DRAWING PART NUMBER, REVISION (AND VARIANT OR "TYPE" IF APPLICABLE) ON NOTED SURFACE OF PART FOLLOWED ON THE NEXT LINE WITH A THREE DIGIT SERIAL NUMBER. SERIAL NUMBERS START AT 001 FOR THE FIRST ARTICLE AND PROCEED CONSECUTIVELY. USE MINIMUM 0.12" HIGH CHARACTERS, UNLESS THE SIZE OF THE PART DICTATES SMALLER CHARACTERS. EXAMPLE: DXXXXXX-VY, TYPE-XX, S/N XXX
 (DO NOT APPLY MARK ON SUPER #8 SIDE)

- 6. APPROXIMATE WEIGHT = 8.349 LBS.
- 7. ALL PARTS SHALL BE MANUFACTURED IN ACCORDANCE WITH LIGO SPECIFICATION E0900364.
- 8. ALL MATERIAL IS TO BE VIRGIN MATERIAL (i.e. NO WELD REPAIRS, PLUGS OR RECYCLED MATERIAL). NO REPAIRS SHALL BE MADE UNLESS APPROVED IN ADVANCE, AND IN WRITING, BY LIGO LABORATORY. REFER TO LIGO-E0900364.
- 9. SURFACE FINISH TO BE AS-PROCESSED FROM MILL/SUPPLIER, FREE FROM SCRATCHES OR GOUGES.
- 10. PART WILL BE OXIDIZED PER LIGO SPECIFICATION E1100842 AFTER FABRICATION.
- 11. BEND RADIUS: UNLESS OTHERWISE NOTED, THE BEND RADIUS SHOULD BE THE MINIMUM REQUIRED TO FORM WITHOUT CRACKING OR REQUIRING ADDITIONAL WORK WHEN FORMING.
- 12. SEE CAD FILE D1101804 TO GENERATE ELLIPSE CURVE.

REV.	DATE	DCN #	DRAWING TREE #
v1	06 OCT 2011	E1101007	-
v2	8 MAY 2012	-	-
-	-	-	-



D1101804_elliptical Baffle Center Skin, PART PDM REV: X-038, DRAWING PDM REV: X-025

NOTES AND TOLERANCES: (UNLESS OTHERWISE SPECIFIED)

DIMENSIONS ARE IN INCHES

TOLERANCES:
 .XX ± .02
 .XXX ± .010
 ANGULAR ± 1.0°

MATERIAL: 18 GA 304 SSSL
 FINISH: SUPER #8

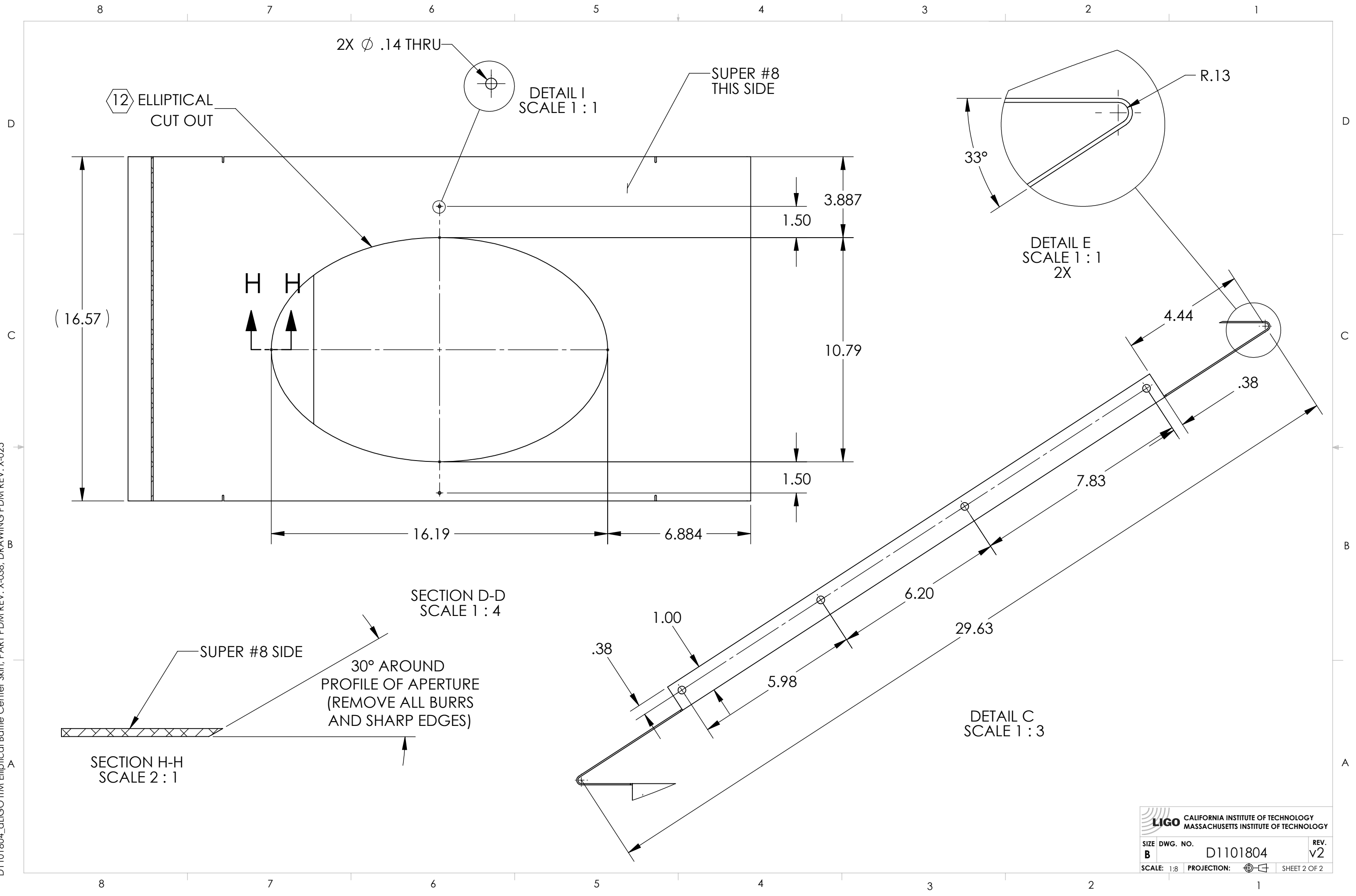
LIGO CALIFORNIA INSTITUTE OF TECHNOLOGY
 MASSACHUSETTS INSTITUTE OF TECHNOLOGY

SYSTEM: ADVANCED LIGO
 SUB-SYSTEM: AOS
 NEXT ASSY: D1101806

PART NAME: aLIGO ITM ELLIPTICAL BAFFLE CENTER SKIN

DESIGNER: H. KELMAN	SIZE DWG. NO. B	REV. v2
DRAFTER: TQ. NGUYEN	DWG. NO. D1101804	
CHECKER: L. AUSTIN	SCALE: 1:8	
APPROVAL: M. SMITH	PROJECTION:	SHEET 1 OF 2

D1101804_dLIGO ITM Elliptical Baffle Center Skin, PART PDM REV: X-038, DRAWING PDM REV: X-025



LIGO CALIFORNIA INSTITUTE OF TECHNOLOGY
 MASSACHUSETTS INSTITUTE OF TECHNOLOGY

SIZE	DWG. NO.	REV.
B	D1101804	v2
SCALE: 1:8	PROJECTION:	SHEET 2 OF 2