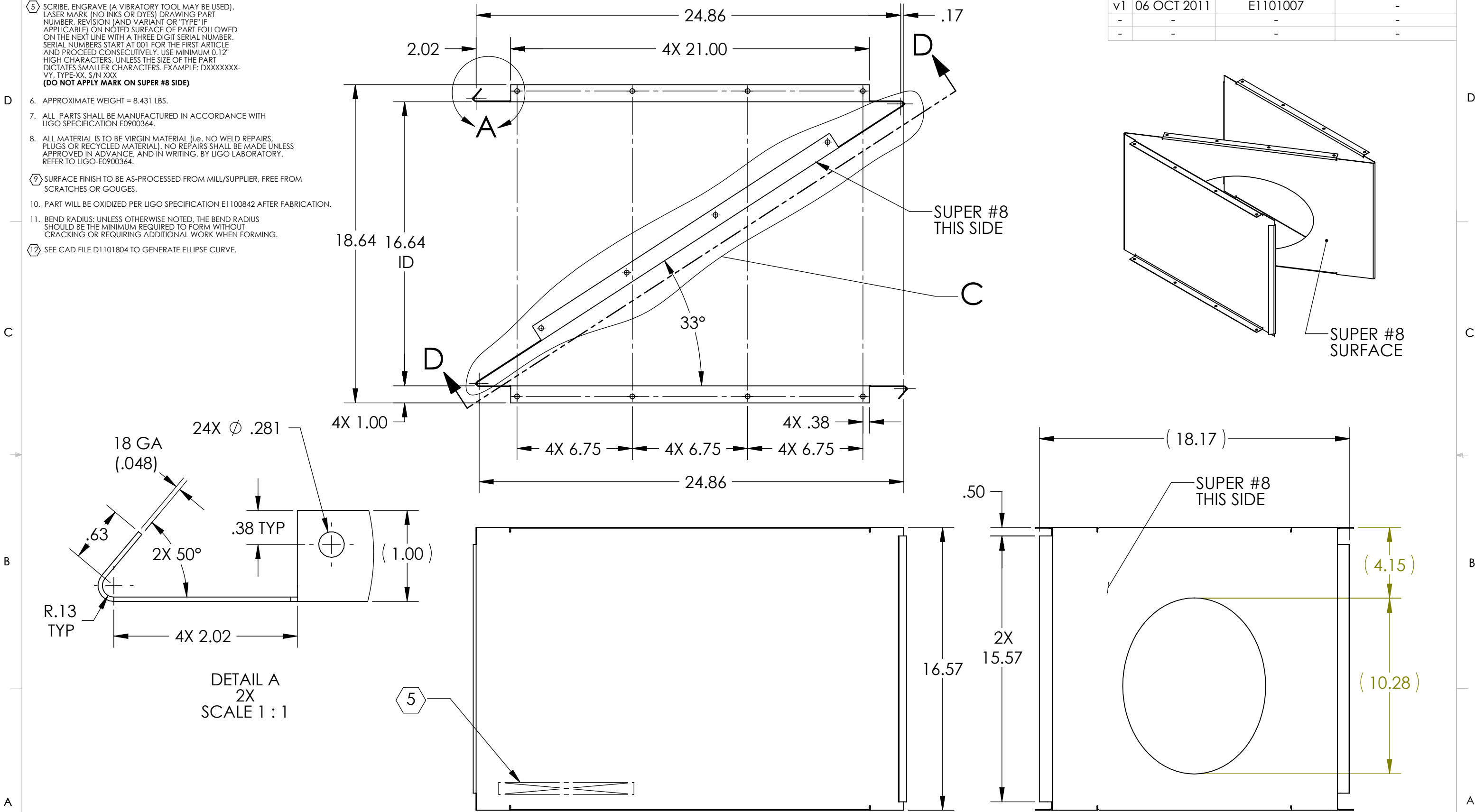


NOTES CONTINUED:  
 5. SCRIBE, ENGRAVE (A VIBRATORY TOOL MAY BE USED), LASER MARK (NO INKS OR DYES) DRAWING PART NUMBER, REVISION (AND VARIANT OR "TYPE" IF APPLICABLE) ON NOTED SURFACE OF PART FOLLOWED ON THE NEXT LINE WITH A THREE DIGIT SERIAL NUMBER. SERIAL NUMBERS START AT 001 FOR THE FIRST ARTICLE AND PROCEED CONSECUTIVELY. USE MINIMUM 0.12" HIGH CHARACTERS, UNLESS THE SIZE OF THE PART DICTATES SMALLER CHARACTERS. EXAMPLE: DXXXXXX-VY, TYPE-XX, S/N XXX  
 (DO NOT APPLY MARK ON SUPER #8 SIDE)

- 6. APPROXIMATE WEIGHT = 8.431 LBS.
- 7. ALL PARTS SHALL BE MANUFACTURED IN ACCORDANCE WITH LIGO SPECIFICATION E0900364.
- 8. ALL MATERIAL IS TO BE VIRGIN MATERIAL (i.e. NO WELD REPAIRS, PLUGS OR RECYCLED MATERIAL). NO REPAIRS SHALL BE MADE UNLESS APPROVED IN ADVANCE, AND IN WRITING, BY LIGO LABORATORY. REFER TO LIGO-E0900364.
- 9. SURFACE FINISH TO BE AS-PROCESSED FROM MILL/SUPPLIER, FREE FROM SCRATCHES OR GOUGES.
- 10. PART WILL BE OXIDIZED PER LIGO SPECIFICATION E1100842 AFTER FABRICATION.
- 11. BEND RADIUS: UNLESS OTHERWISE NOTED, THE BEND RADIUS SHOULD BE THE MINIMUM REQUIRED TO FORM WITHOUT CRACKING OR REQUIRING ADDITIONAL WORK WHEN FORMING.
- 12. SEE CAD FILE D1101804 TO GENERATE ELLIPSE CURVE.

REV.	DATE	DCN #	DRAWING TREE #
v1	06 OCT 2011	E1101007	-
-	-	-	-
-	-	-	-



D1101804\_elliptical Baffle Center Skin, PART PDM REV: X-030, DRAWING PDM REV: X-017

**NOTES AND TOLERANCES: (UNLESS OTHERWISE SPECIFIED)**

DIMENSIONS ARE IN INCHES

TOLERANCES:  
 .XX ± .02  
 .XXX ± .005  
 ANGULAR ± 1.0°

MATERIAL: 18 GA 304 SSSL  
 FINISH: 9 SUPER #8

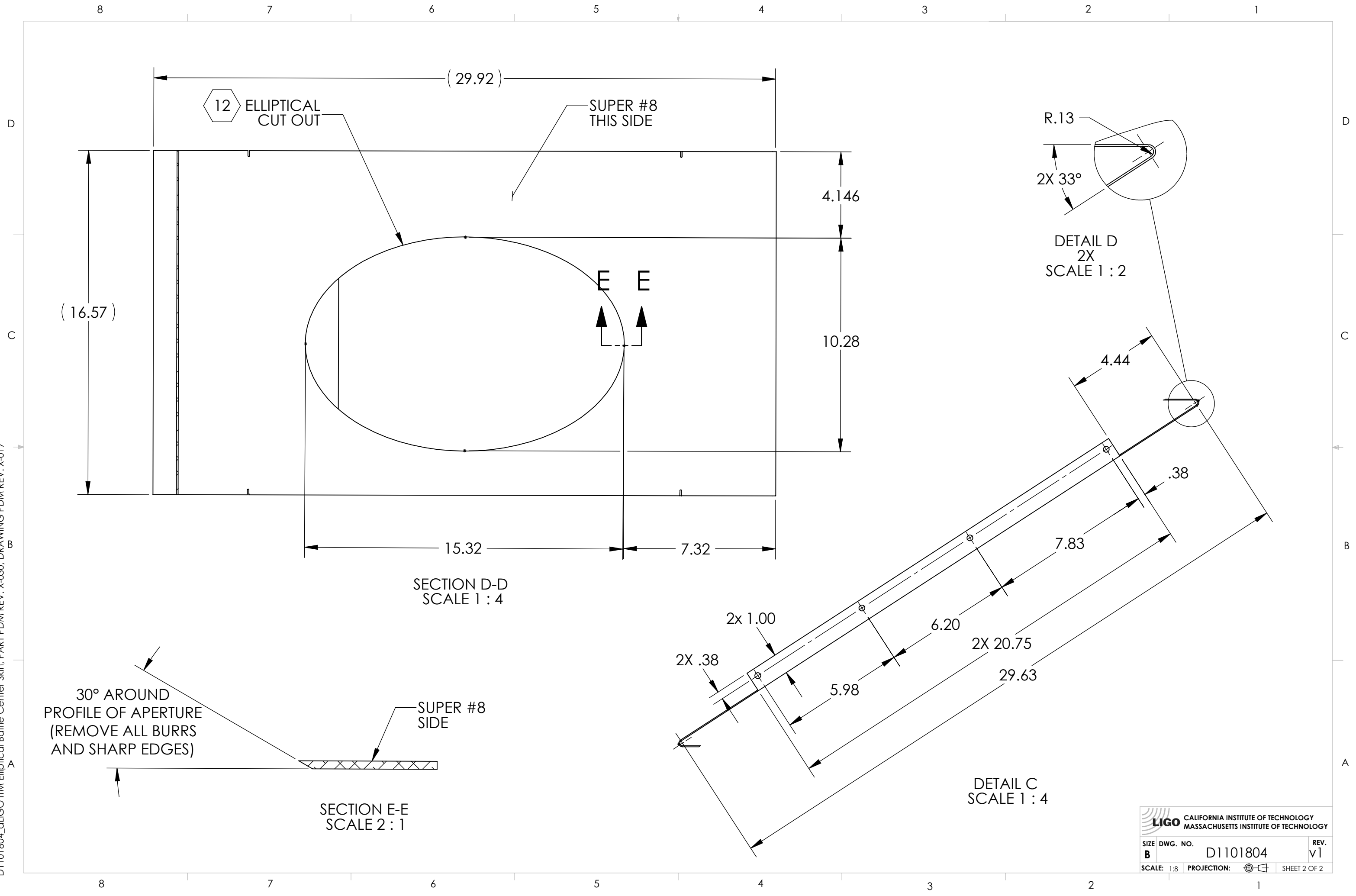
**LIGO** CALIFORNIA INSTITUTE OF TECHNOLOGY  
 MASSACHUSETTS INSTITUTE OF TECHNOLOGY

SYSTEM: ADVANCED LIGO  
 SUB-SYSTEM: AOS  
 NEXT ASSY: D1101806

PART NAME: **alIGO ITM ELLIPTICAL BAFFLE CENTER SKIN**

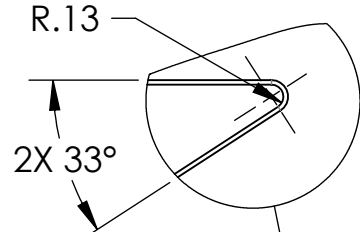
DESIGNER: H. KELMAN	SIZE DWG. NO. <b>B</b>	REV. <b>v1</b>
DRAFTER: J. TERRAZAS	<b>D1101804</b>	
CHECKER: M. SMITH	SCALE: 1:8	PROJECTION:
APPROVAL:	SHEET 1 OF 2	

D1101804\_dLIGO ITM Elliptical Baffle Center Skin, PART PDM REV: X-030, DRAWING PDM REV: X-017



12 ELLIPTICAL CUT OUT

SUPER #8 THIS SIDE



DETAIL D  
2X  
SCALE 1 : 2

SECTION D-D  
SCALE 1 : 4

30° AROUND  
PROFILE OF APERTURE  
(REMOVE ALL BURRS  
AND SHARP EDGES)

SUPER #8  
SIDE

SECTION E-E  
SCALE 2 : 1

DETAIL C  
SCALE 1 : 4

		CALIFORNIA INSTITUTE OF TECHNOLOGY MASSACHUSETTS INSTITUTE OF TECHNOLOGY	
SIZE	DWG. NO.	REV.	
B	D1101804	v1	
SCALE: 1:8	PROJECTION:	SHEET 2 OF 2	