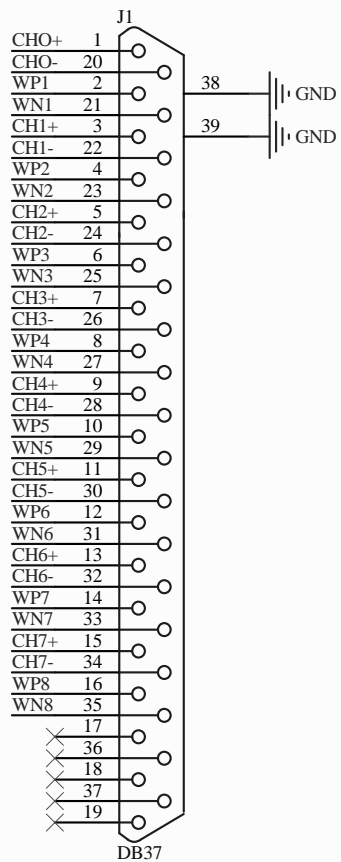
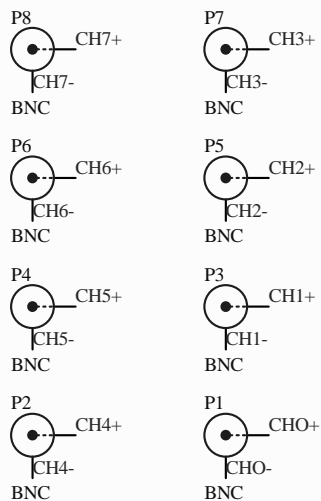


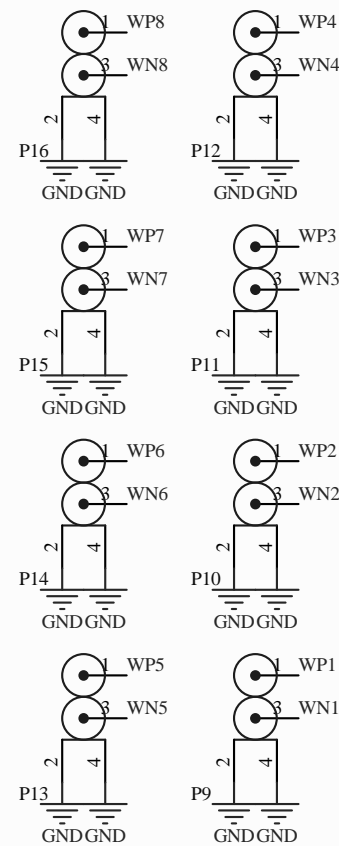
This connector contains all of the analog inputs and outputs.
 It connects all these inputs/outputs to the back board inside the chassis.



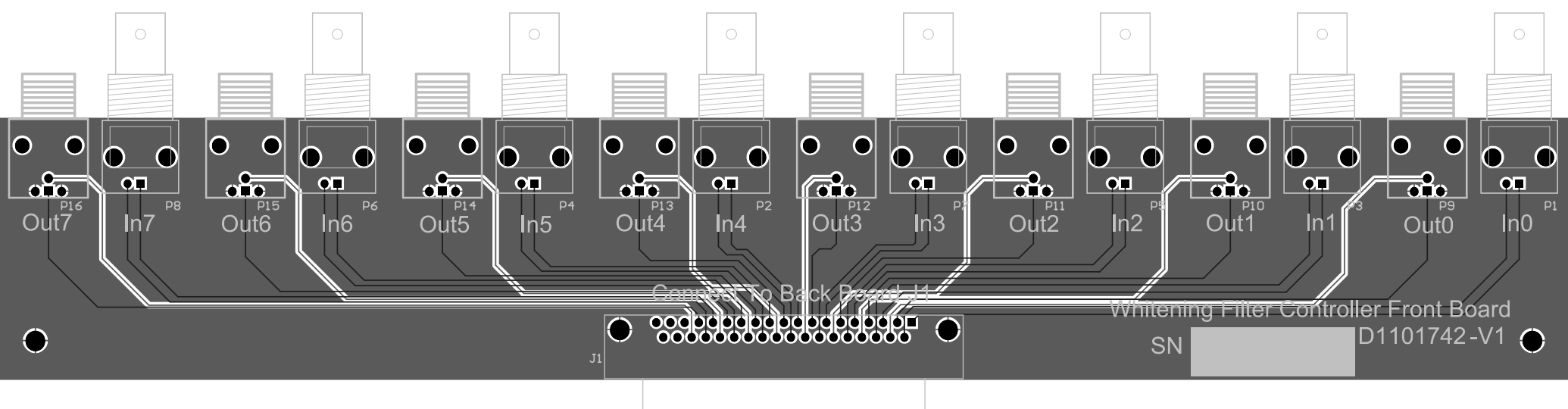
Analog Inputs



Analog Outputs



Title ISC Whitening Filter Controller Front Board			* * *		LIGO Date: 9/1/2011 Time: 2:15:12 PM
Size: A	DCC Number: S1101742	SCH / PCB Revision: v1	* * * Engineer:		
File: C:\Documents and Settings\sabbott\My Documents\My Designs\ISC_Gain_Filter_Board\ISC_Gain_Filter_Board.Sch Doc Sheet * of *					



Out7

In7

Out6

In6

Out5

In5

Out4

In4

Out3

In3

Out2

In2

Out1

In1

Out0

In0

Connect To Back Panel J1

Whiteness Filter Controller Front Board

SN

D1101742-V1

J1