

8 7 6 5 4 3 2 1

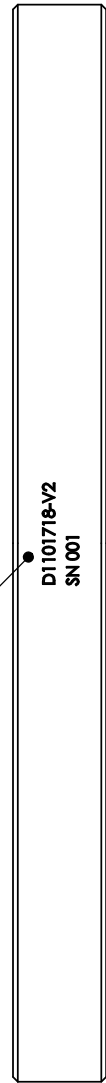
**NOTES CONTINUED:**  
 5. SCRIBE, ENGRAVE (A VIBRATORY TOOL MAY BE USED), LASER MARK OR MECHANICALLY STAMP (NO INKS OR DYES) DRAWING PART NUMBER, REVISION (AND VARIANT OR "TYPE" IF APPLICABLE) ON NOTED SURFACE OF PART FOLLOWED ON THE NEXT LINE WITH A THREE DIGIT SERIAL NUMBER. SERIAL NUMBERS START AT 001 FOR THE FIRST ARTICLE AND PROCEED CONSECUTIVELY. USE MINIMUM 0.12" HIGH CHARACTERS, UNLESS THE SIZE OF THE PART DICTATES SMALLER CHARACTERS. EXAMPLE: DXXXXXX-VY, TYPE-XX, S/N XXX

- 6. APPROXIMATE WEIGHT = 27 LB.
- 7. MACHINE ALL SURFACES TO REMOVE OXIDES AND MILL FINISH. USE OF ABRASIVE REMOVAL TECHNIQUES IS NOT ALLOWED. REFER TO LIGO-E0900364
- 8. ALL PARTS SHALL BE MANUFACTURED IN ACCORDANCE WITH LIGO SPECIFICATION E0900364, OR VACUUM EQUIPMENT MANUFACTURER'S SPECIFICATION IF APPROVED BY LIGO.
- 9. ALL MATERIAL IS TO BE VIRGIN MATERIAL (i.e. NO WELD REPAIRS, PLUGS OR RECYCLED MATERIAL). NO REPAIRS SHALL BE MADE UNLESS APPROVED IN ADVANCE, AND IN WRITING, BY LIGO LABORATORY. REFER TO LIGO-E0900364.

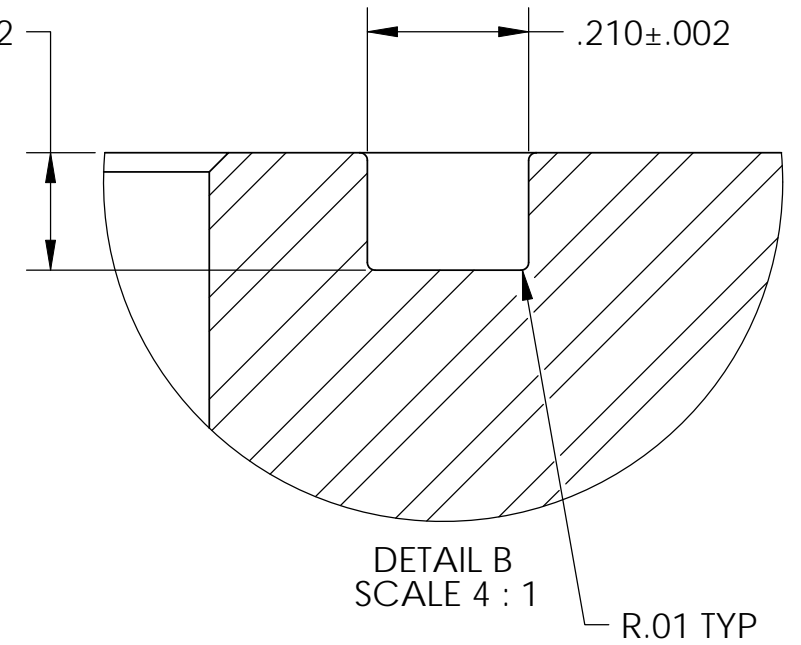
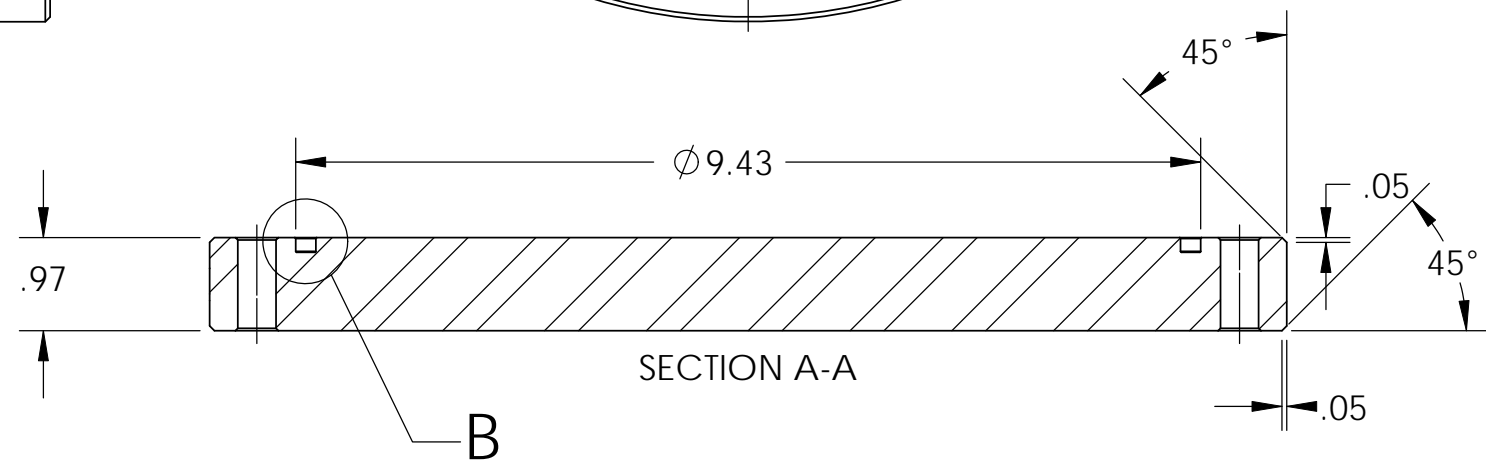
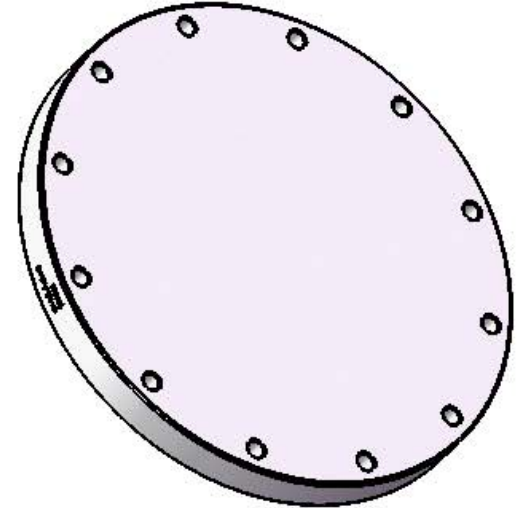
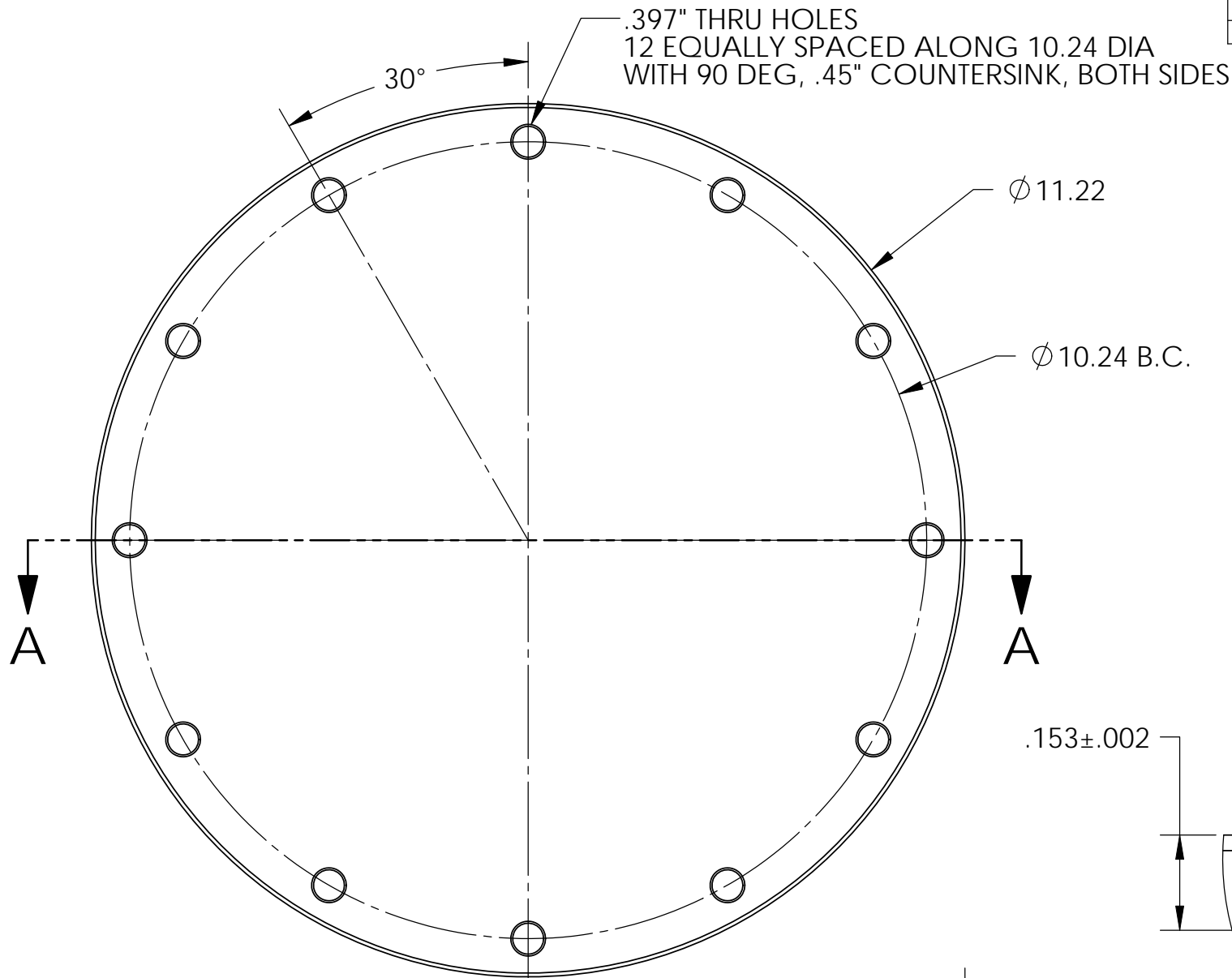
REV.	DATE	DCN #	DRAWING TREE #
V1	27 AUG 2011	E1100817-X0	NA
V2	7 OCT 2011	E1100478-V4	
-	-	-	-

D1101718 aLIGO Septum Viewport Blank, PART PDM REV: X-002, DRAWING PDM REV: X-005

D  
C  
B  
A



MARK PART NUMBER & SERIAL NUMBER ON THIS EDGE. SEE NOTE 5



NOTES AND TOLERANCES: (UNLESS OTHERWISE SPECIFIED)				LIGO CALIFORNIA INSTITUTE OF TECHNOLOGY MASSACHUSETTS INSTITUTE OF TECHNOLOGY		PART NAME					
DIMENSIONS ARE IN INCHES				SYSTEM		SUB-SYSTEM		DESIGNER		SIZE	
TOLERANCES: .XX ± .03 .XXX ± .010				AOS		SLC		Dennis Coyne		9 JUN 2011	
ANGULAR ± 1.0°				MATERIAL		NEXT ASSY		CHECKER		DWG. NO.	
				AISI 304		NA		Mike Smith		D1101718	
				FINISH				APPROVAL		REV.	
				63 Raµinch				see DCN		v2	
								see DCN		SCALE: 1:2	
										PROJECTION:	
										SHEET 1 OF 1	

8 7 6 5 4 3 2 1