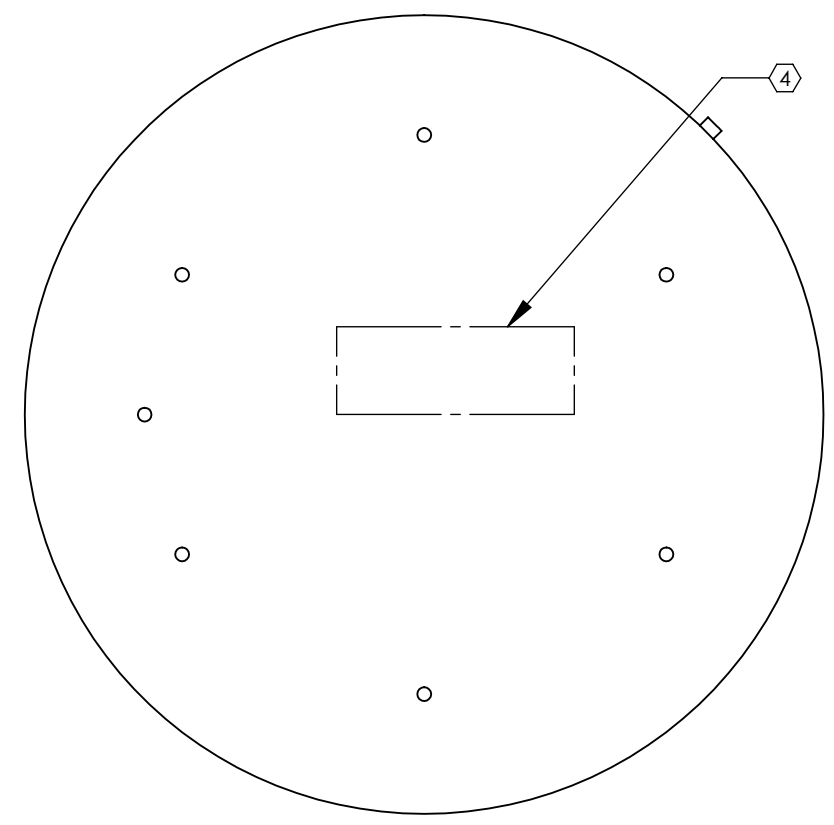
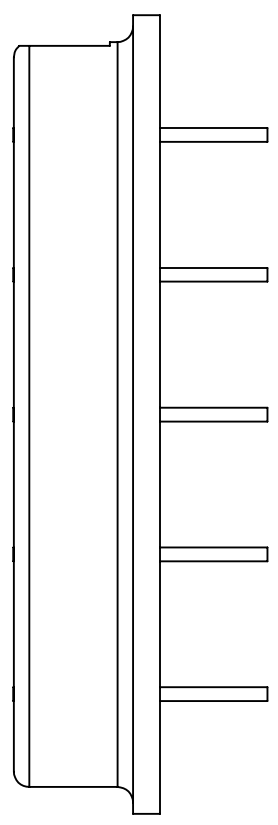
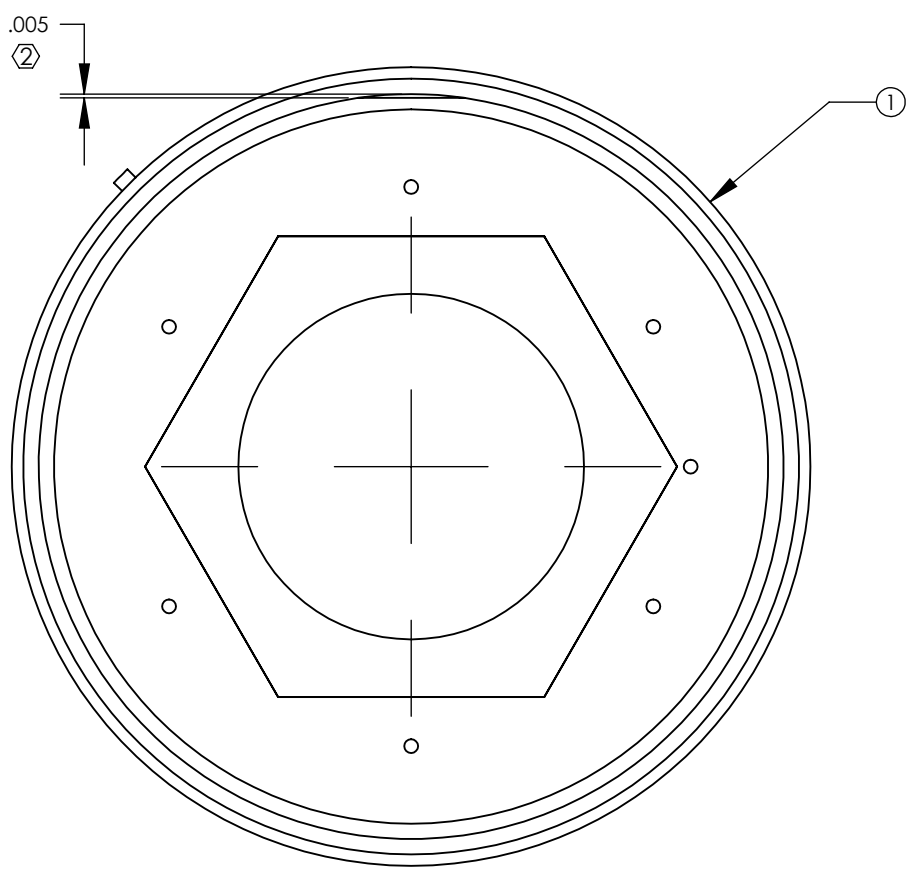
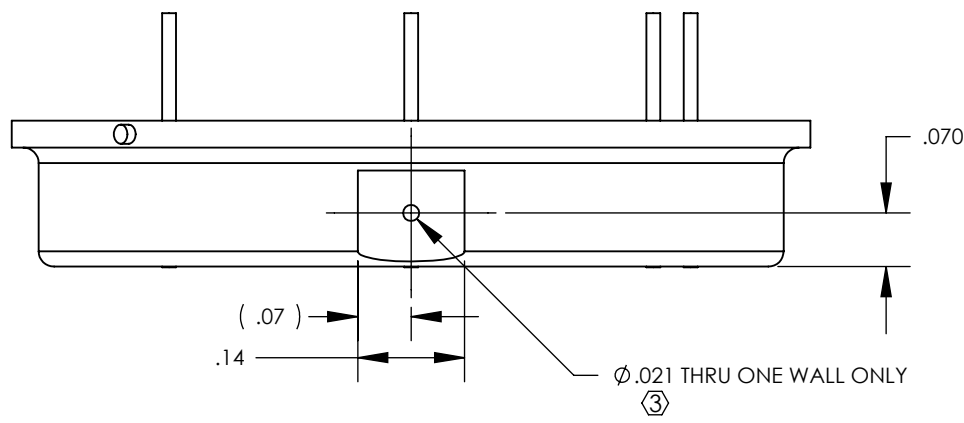


8 7 6 5 4 3 2 1

- NOTES CONTINUED:**
- 1. DO NOT SCALE FROM DRAWING.
 - ② REMOVE 0.005" OF MATERIAL FROM SIDE OF PHOTO DIODE
 - ③ PUNCTURE HOLE IN MIDDLE OF SHAVED FLAT. PUNCTURE HOLE AFTER CLEAN AND BAKE
 - ④ SCRIBE, ENGRAVE OR LASERMARK (NO DYES OR INKS) A UNIQUE SERIAL NUMBER.

REV.	DATE	DCN #	DRAWING TREE #
v1	26 AUG 2011	E1100335	-
v2	10 NOV 2011	E1100335	-
-	-	-	-



1	YAG-444-AH	PIN PHOTODIODE_PERKIN ELMER	VARIOUS	1	1	1
ITEM NO.	PART NUMBER	DESCRIPTION	MATERIAL	REQ	SPARE	TOTAL

PARTS LIST

DIMENSIONS ARE IN TOLERANCES: .XX ± .01 .XXX ± .001 ANGULAR ± .5°		NOTES AND TOLERANCES: (UNLESS OTHERWISE SPECIFIED)		CALIFORNIA INSTITUTE OF TECHNOLOGY MASSACHUSETTS INSTITUTE OF TECHNOLOGY		PART NAME PHOTODIODE, ACB	
MATERIAL	VARIOUS	FINISH	N/A μinch	SYSTEM	ADVANCED LIGO	SUB-SYSTEM	AOS
				DESIGNER	MRUIZ	DATE	26 AUG 2011
				CHECKER		SIZE	DWG. NO. B
				APPROVAL		REV.	v2
				SCALE: 4:1		PROJECTION:	
				SHEET 1 OF 1			

D1101713, PHOTODIODE, ACB, PART PDM REV: X-002, DRAWING PDM REV: X-008

8 7 6 5 4 3 2 1