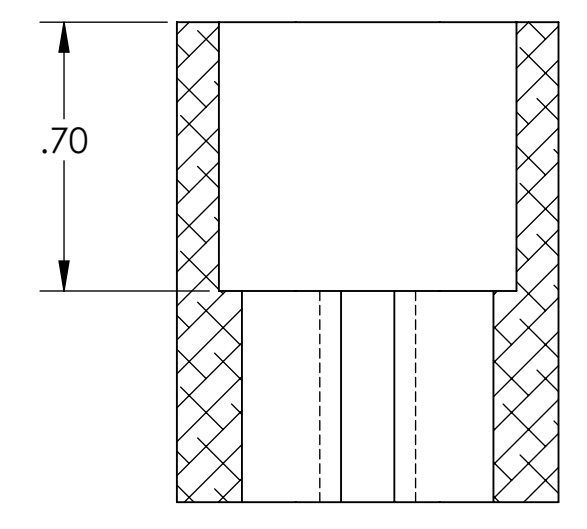
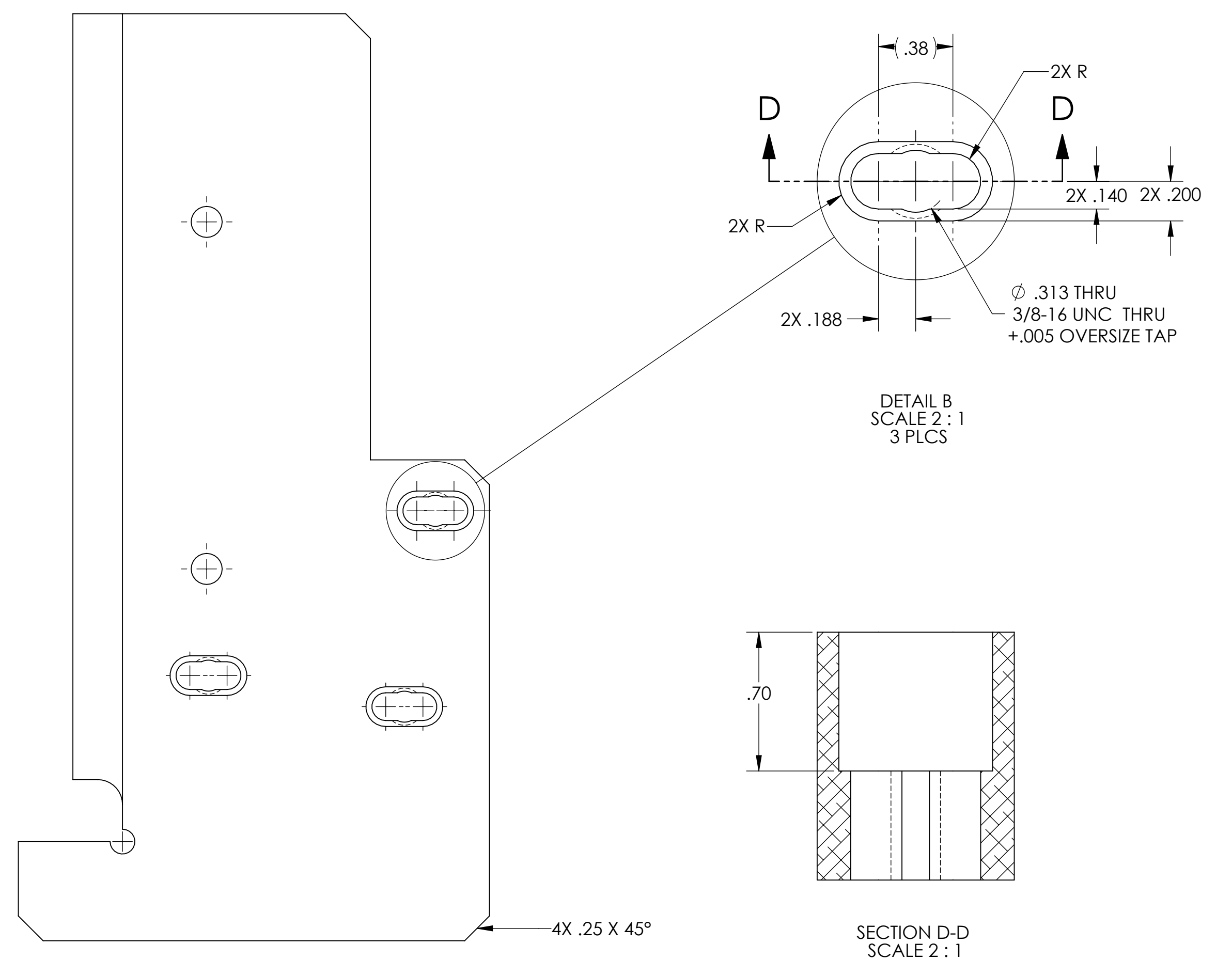
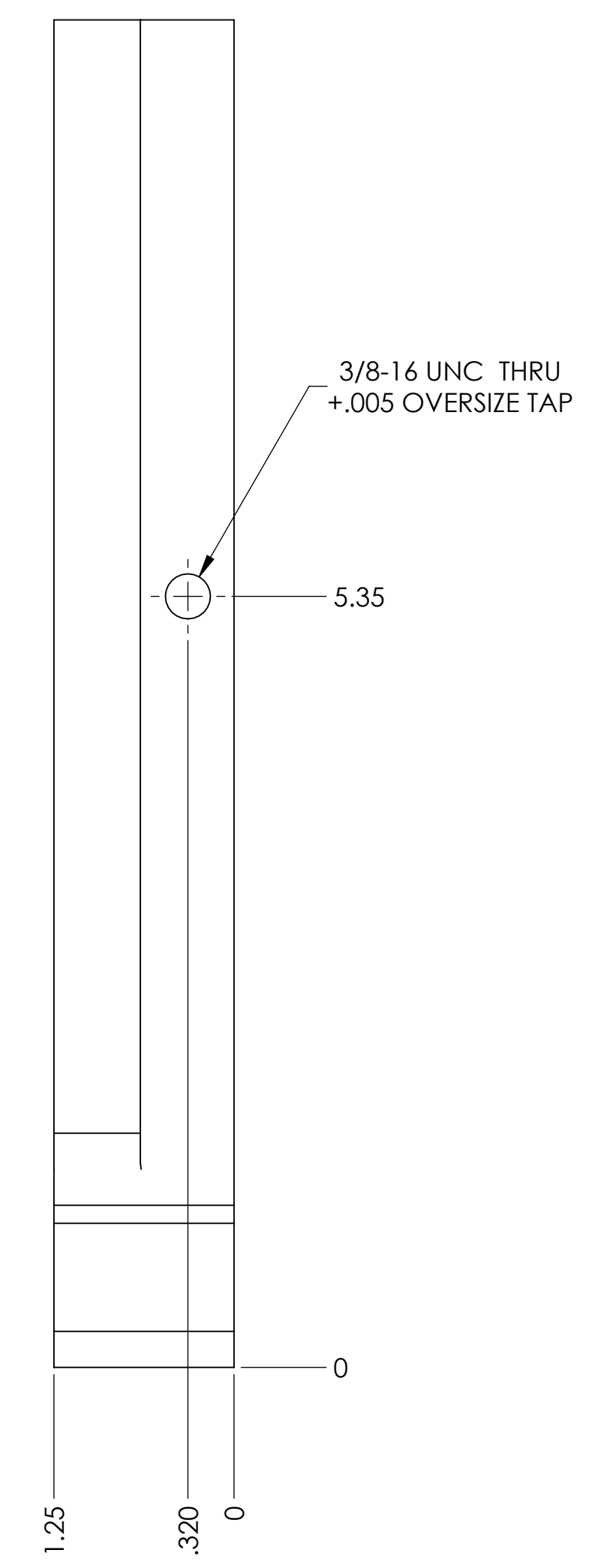
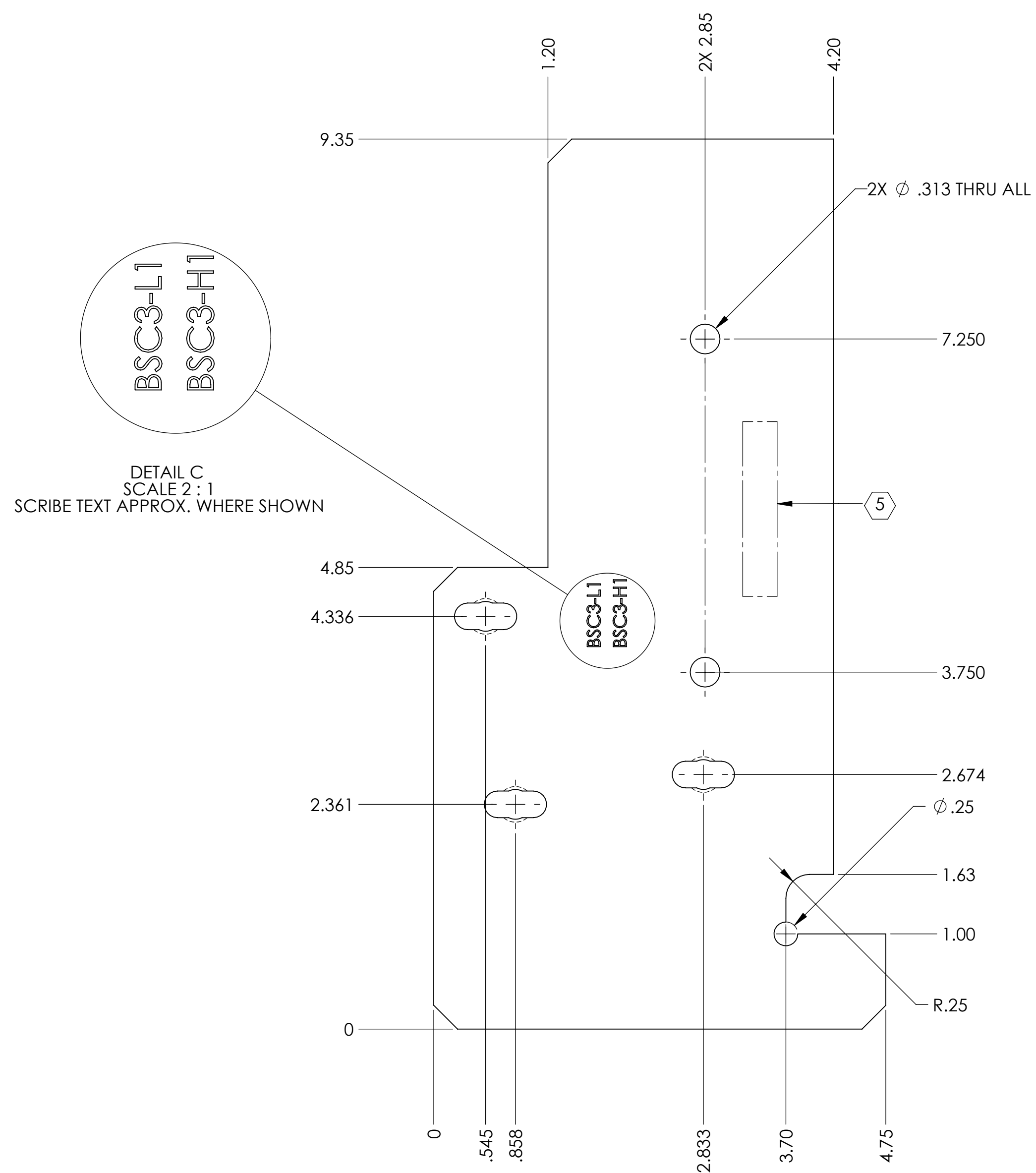
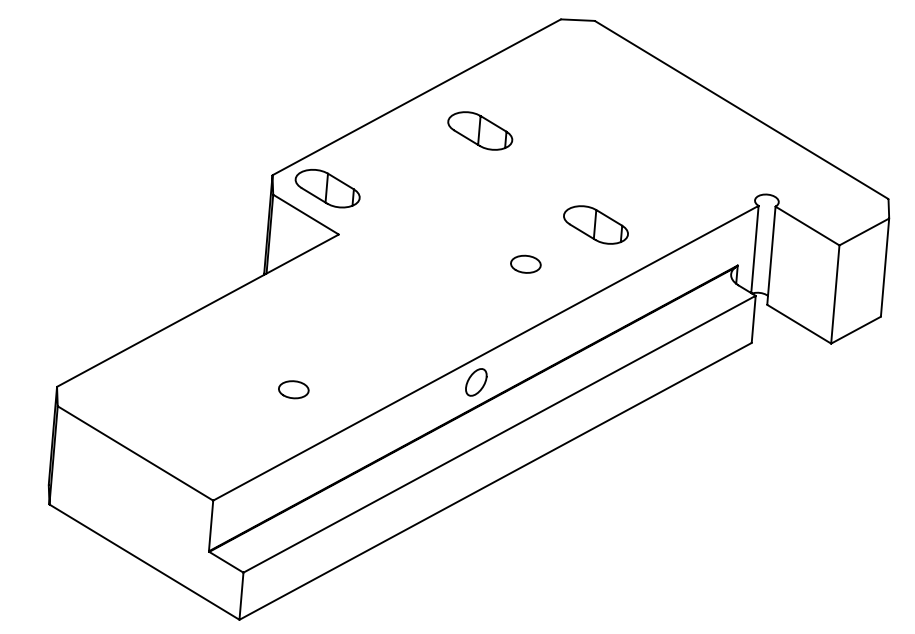
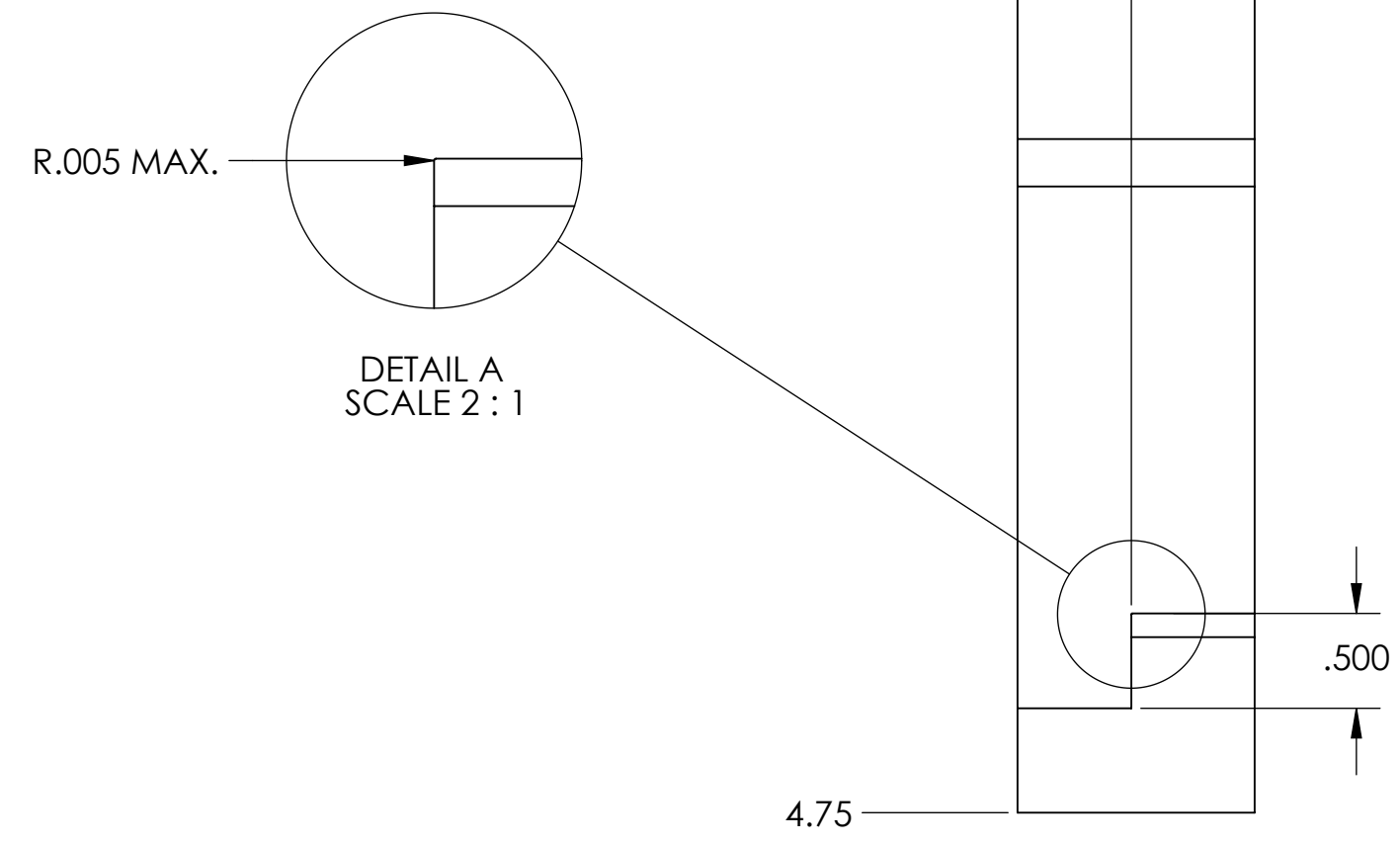


- NOTES CONTINUED:**
- 5. SCRIBE, ENGRAVE (A VIBRATORY TOOL MAY BE USED), LASER MARK OR MECHANICALLY STAMP (NO INKS OR DYES) DRAWING PART NUMBER, REVISION (AND VARIANT OR "TYPE" IF APPLICABLE) ON NOTED SURFACE OF PART FOLLOWED ON THE NEXT LINE WITH A THREE DIGIT SERIAL NUMBER. SERIAL NUMBERS START AT 001 FOR THE FIRST ARTICLE AND PROCEED CONSECUTIVELY. USE MINIMUM 0.12" HIGH CHARACTERS, UNLESS THE SIZE OF THE PART DICTATES SMALLER CHARACTERS. EXAMPLE: DXXXXXX-VY, TYPE-XX, S/N XXX
 - 6. APPROXIMATE WEIGHT = 3.670 LBS.
 - 7. MACHINE ALL SURFACES TO REMOVE OXIDES AND MILL FINISH. USE OF ABRASIVE REMOVAL TECHNIQUES IS NOT ALLOWED. REFER TO LIGO-E0900364
 - 8. ALL PARTS SHALL BE MANUFACTURED IN ACCORDANCE WITH LIGO SPECIFICATION E0900364.
 - 9. ALL MATERIAL IS TO BE VIRGIN MATERIAL (I.E. NO WELD REPAIRS, PLUGS OR RECYCLED MATERIAL). NO REPAIRS SHALL BE MADE UNLESS APPROVED IN ADVANCE, AND IN WRITING, BY LIGO LABORATORY. REFER TO LIGO-E0900364.

REV.	DATE	DCN #	DRAWING TREE #
v1	29 FEB 2012	-	-
v2	15 APR 2013	E1100312-v1	-
-	-	-	-



DIMENSIONS ARE IN INCHES		TOLERANCES:		ANGULAR ± 1.0°		MATERIAL		FINISH		NEXT ASSY		PART NAME		DESIGNER		DRAFTER		CHECKER		APPROVAL			
NOTES AND TOLERANCES: (UNLESS OTHERWISE SPECIFIED)			1. INTERPRET DRAWING PER ASME Y14.5-1994. 2. REMOVE ALL SHARP EDGES, .005-.015. 3. DO NOT SCALE FROM DRAWING. 4. ALL MACHINING FLUIDS MUST BE FULLY SYNTHETIC, FULLY WATER SOLUBLE AND FREE OF SULFUR, SILICONE, AND CHLORINE.			6061-T6 Al		63 μinch		D1003371		ACB_STAGE ZERO_GUIDE BLOCK, BSC3_H1-L1		TQ. NGUYEN		TQ. NGUYEN		L. AUSTIN		M. SMITH			
LIGO CALIFORNIA INSTITUTE OF TECHNOLOGY MASSACHUSETTS INSTITUTE OF TECHNOLOGY			ADVANCED LIGO			AOS		D		D1101609		17 FEB 2012		29 FEB 2012		26 MAR 2012		26 MAR 2012		SCALE: 1:1		PROJECTION:	
SHEET 1 OF 1												SIZE		DWG. NO.		REV.							

D1101609_ACB_Stage Zero Guide Block-BSC 3 PART PDM REV: X020 DRAWING PDM REV: X012