

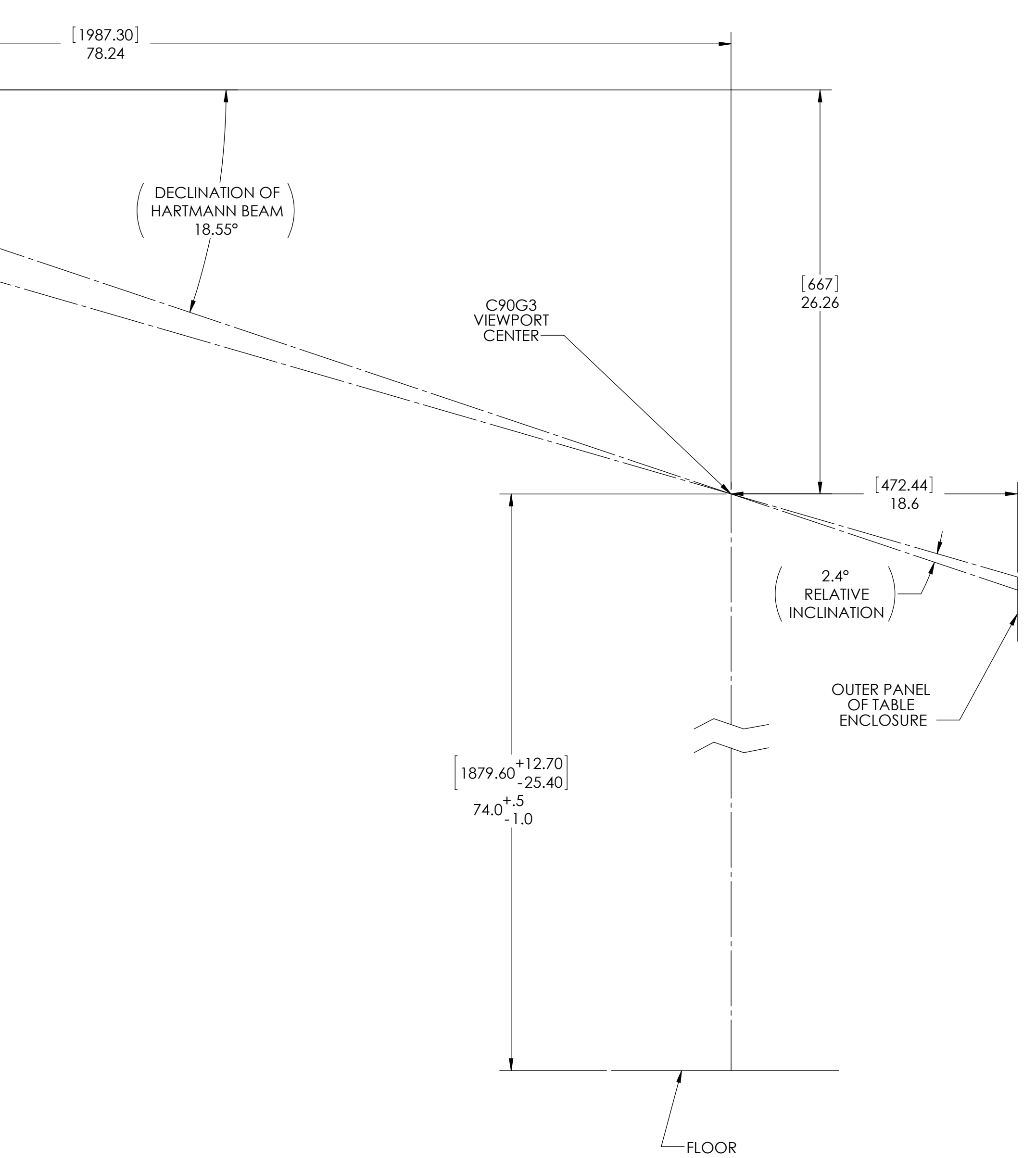
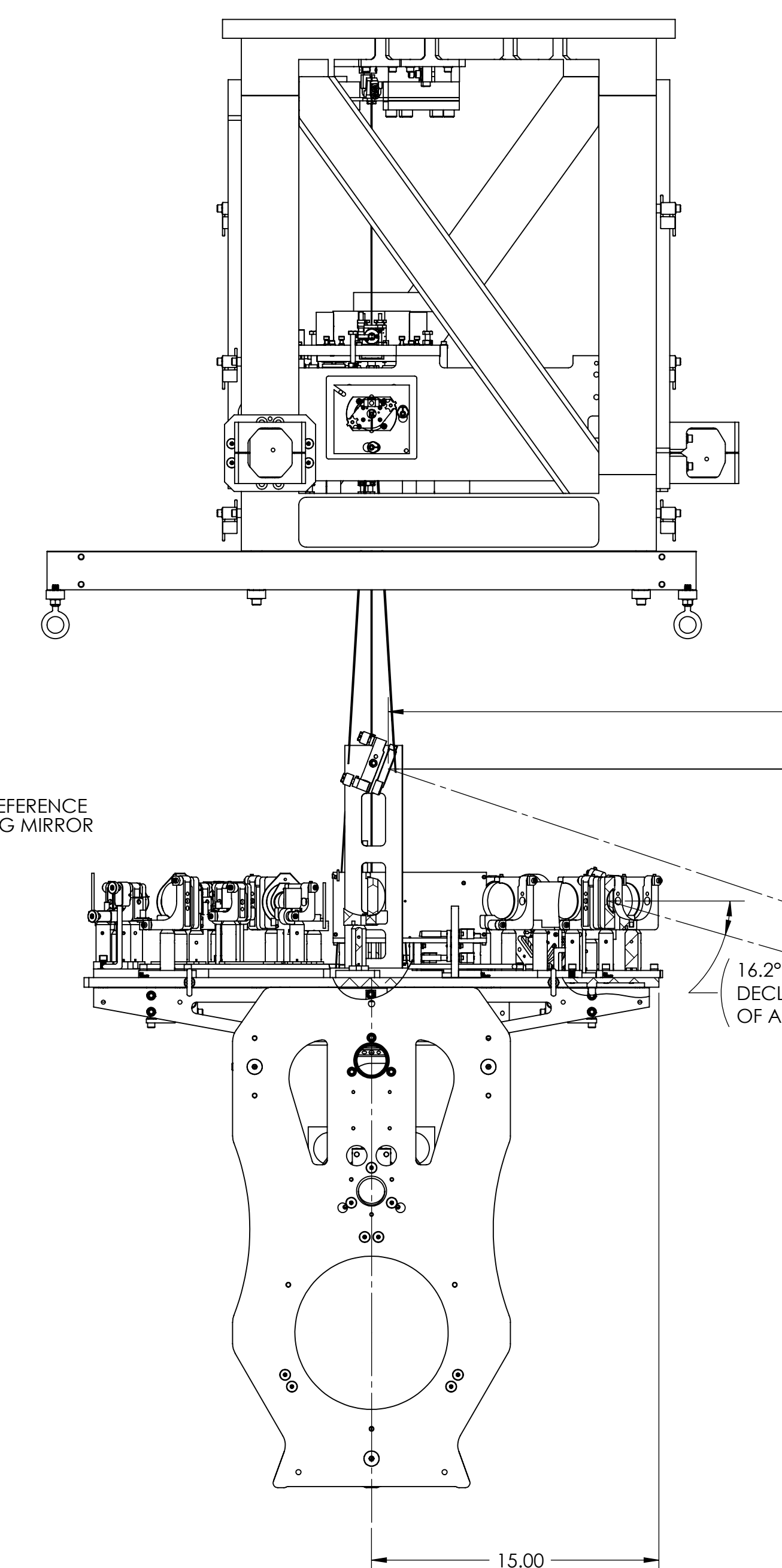
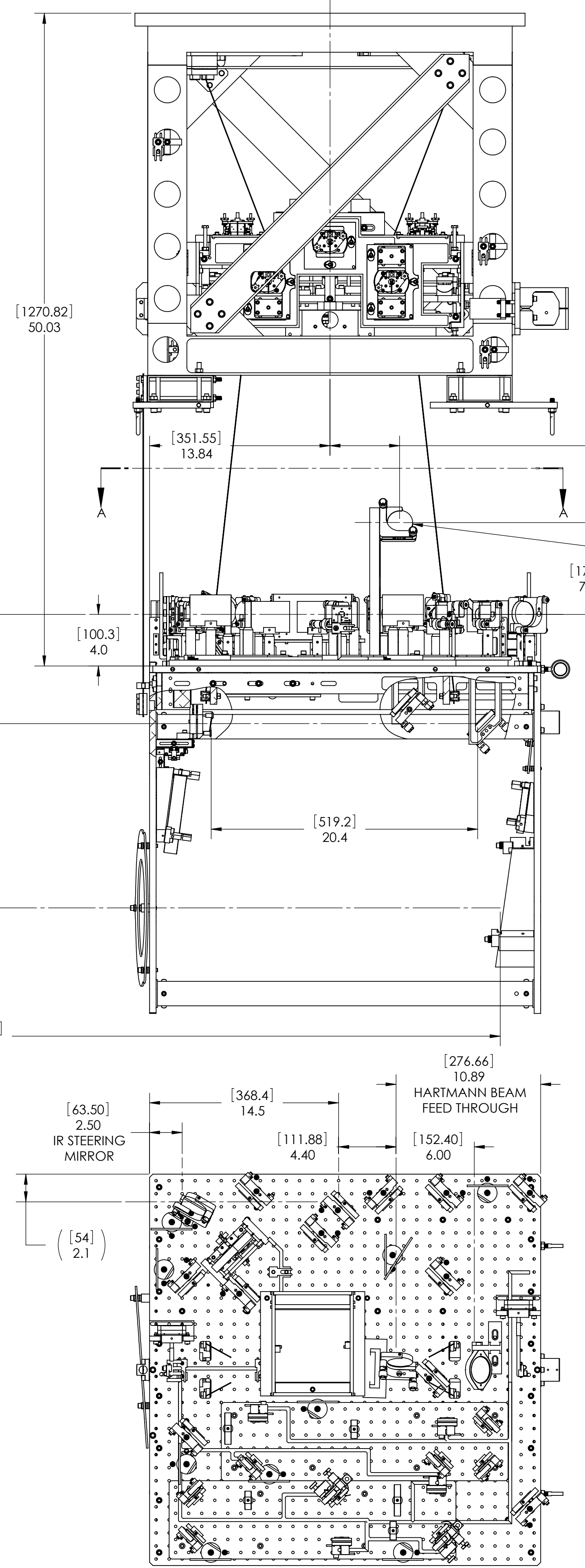
NOTES CONTINUED:
 5 ACCORDING TO LIGO-D1100607-v4

| REV. | DATE | DCN # | DRAWING TREE # |
|------|------|-------|----------------|
| | | | |
| | | | |

G1100873_ETM_TEL_ASSY_FULL_COMPLETE_BSC6_PRT_PDM_REV_X-107_DRAWING_PDM_REV_X-005

H
G
F
E
D
C
B
A

8

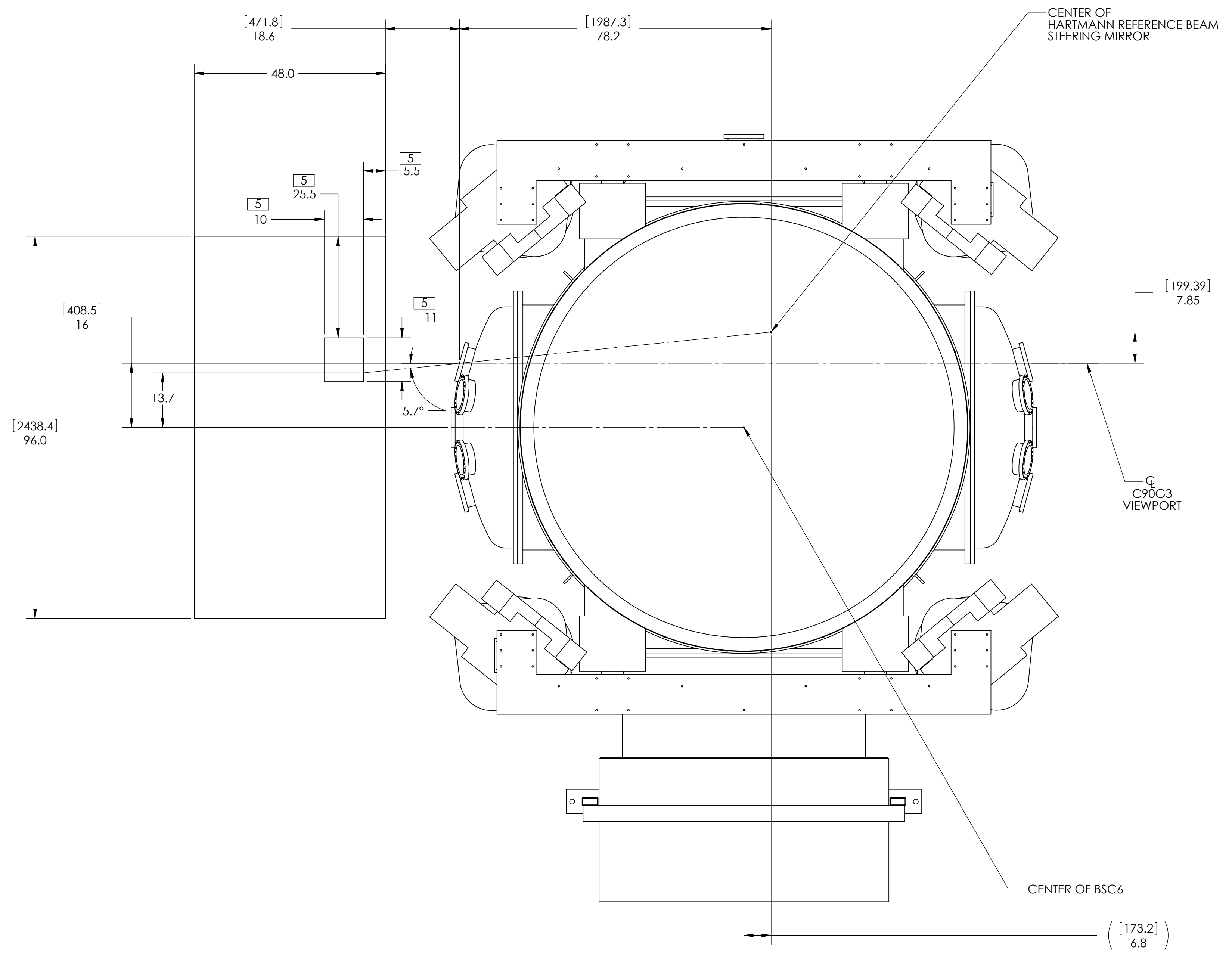


H
G
F
E
D
C
B
A

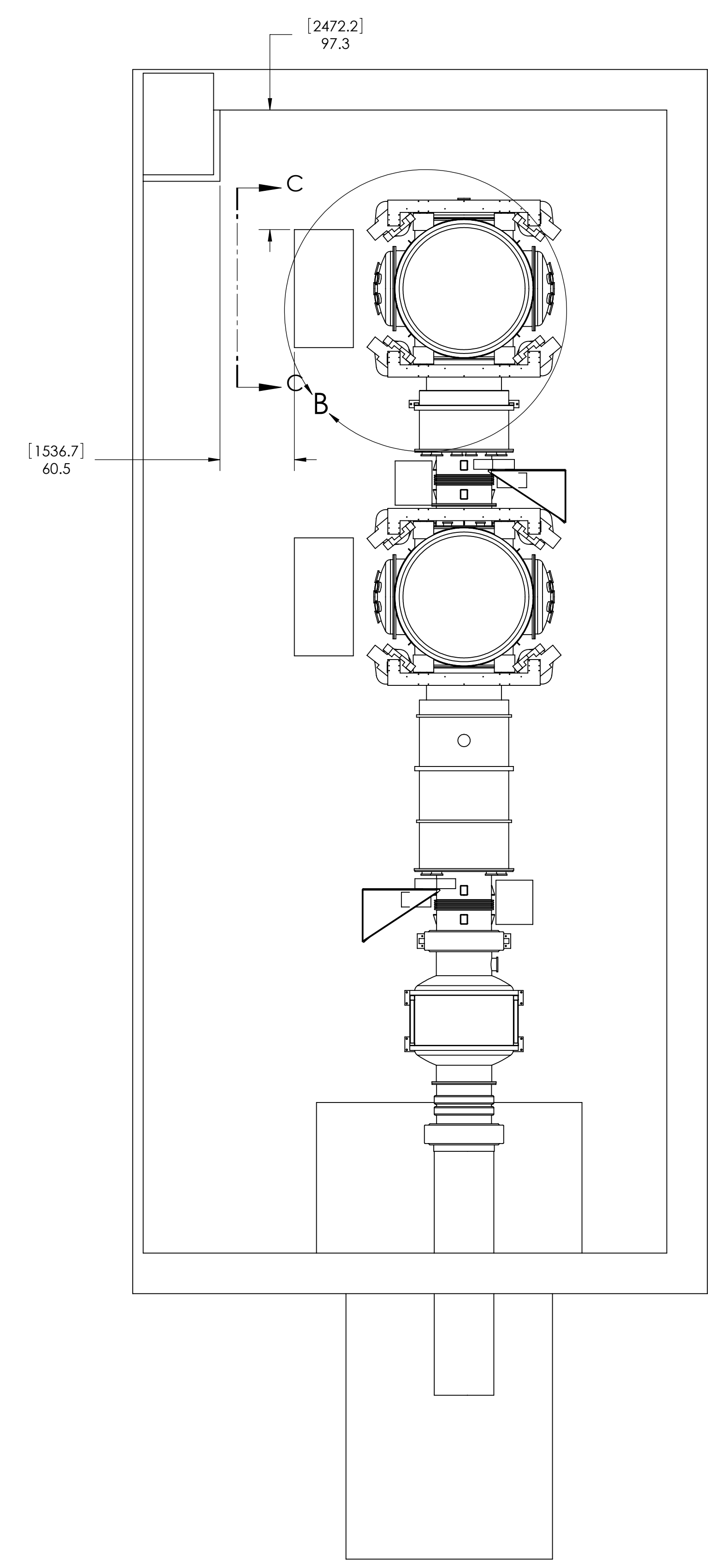
8

| NOTES AND TOLERANCES: (UNLESS OTHERWISE SPECIFIED) | | LIGO CALIFORNIA INSTITUTE OF TECHNOLOGY MASSACHUSETTS INSTITUTE OF TECHNOLOGY | | PART NAME | |
|---|--|---|--|--|--|
| 1. INTERPRET DRAWING PER ASME Y14.5-1994. 2. REMOVE ALL SHARP EDGES, .005-.015, FOR MACHINED PARTS. ROUND ALL EDGES APPROXIMATELY R.02 FOR SHEET METAL PARTS. 3. DO NOT SCALE FROM DRAWING. 4. ALL MACHINING FLUIDS MUST BE FULLY SYNTHETIC, FULLY WATER SOLUBLE AND FREE OF SULFUR, SILICONE, AND CHLORINE. | | ADVANCED LIGO | | ETM TEL ASSY, FULL COMPLETE, BSC6 | |
| DIMENSIONS ARE IN INCHES [MM] | | SYSTEM | | DESIGNER | |
| TOLERANCES: .XX ± .XXX ± | | SUB-SYSTEM | | E. CHAVEZ 12 JUL 2011 | |
| ANGULAR ± ° | | NEXT ASSY | | M. JACOBSON 9 AUG 2011 | |
| MATERIAL | | FINISH | | CHECKER | |
| N/A | | N/A μinch | | B. SLAGMOLEN 12 SEPT 2011 | |
| D0900512 | | APPROVAL | | A. BROOKS 13 SEPT 2011 | |
| SCALE: 1:12 | | PROJECTION: | | SIZE | |
| DWG. NO. | | SHEET 1 OF 3 | | REV. | |
| G1100873 | | G1100873 | | v4 | |

SECTION A-A
SCALE 1:6



DETAIL B
SCALE 1 : 18



SCALE 1:72

G1100873_ETM_TEL_ASSY_FULL_COMPLETE_BSC6_PART_PDM_REV_X:023_DRAWING_PDM_REV_X:005

8

7

6

5

4

3

2

1

H

G

F

E

D

C

B

A

H

G

F

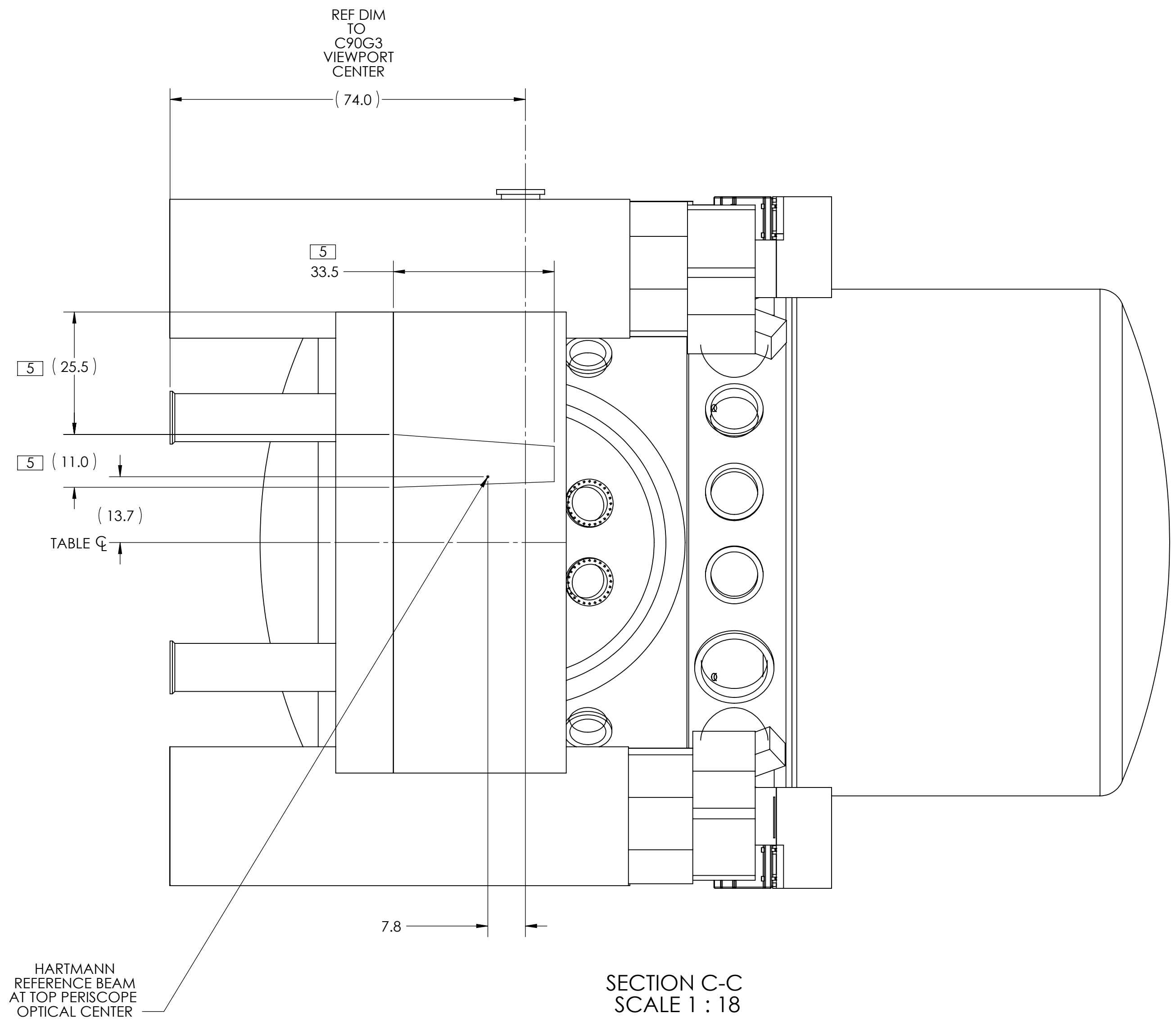
E


D

C

B

A



| | |
|---|--|
| LIGO CALIFORNIA INSTITUTE OF TECHNOLOGY MASSACHUSETTS INSTITUTE OF TECHNOLOGY | |
| SIZE DWG. NO. | REV. |
| D G1100873 | v4 |
| SCALE: 1:384 | PROJECTION:  SHEET 3 OF 3 |

G1100873_ETM_TEL_ASSY_FULL_COMPLETE_BSC6_PART_PDM_REV_X-023_DRAWING_PDM_REV_X-025