

NOTES CONTINUED:

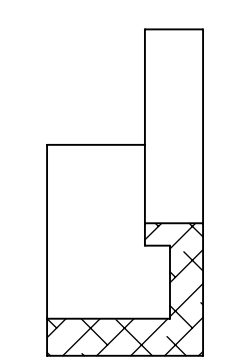
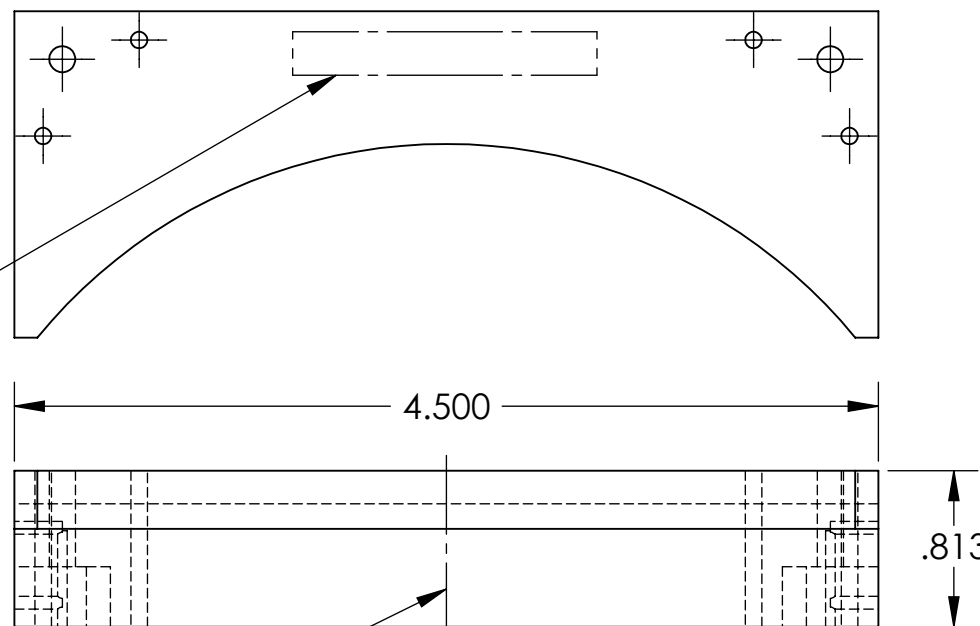
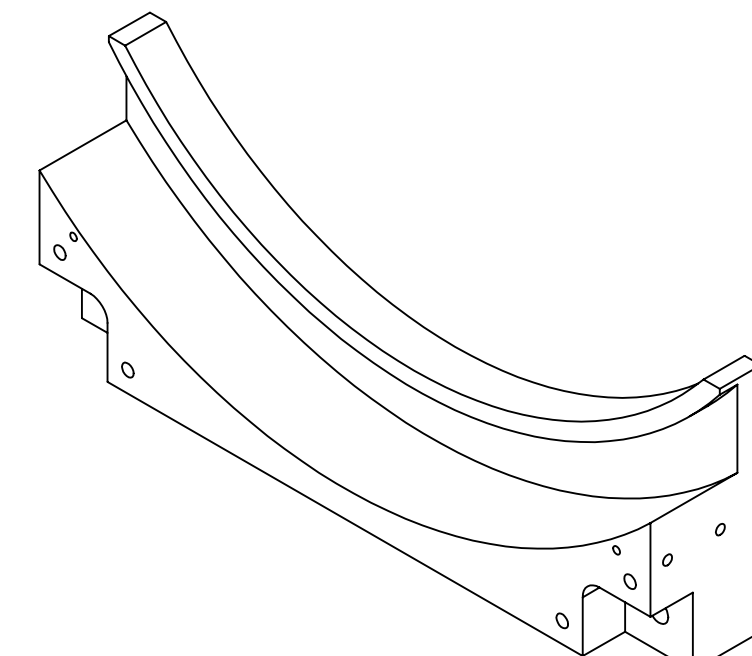
5. SCRIBE, ENGRAVE (A VIBRATORY TOOL MAY BE USED), LASER MARK OR MECHANICALLY STAMP (NO INKS OR DYES) DRAWING PART NUMBER, REVISION (AND VARIANT OR "TYPE" IF APPLICABLE) ON NOTED SURFACE OF PART FOLLOWED ON THE NEXT LINE WITH A THREE DIGIT SERIAL NUMBER. SERIAL NUMBERS START AT 001 FOR THE FIRST ARTICLE AND PROCEED CONSECUTIVELY. USE MINIMUM 0.12" HIGH CHARACTERS, UNLESS THE SIZE OF THE PART DICTATES SMALLER CHARACTERS. EXAMPLE: DXXXXXX-VY, TYPE-XX, S/N XXX

- 6. APPROXIMATE WEIGHT = 0.201 LB.
- 7. MACHINE ALL SURFACES TO REMOVE OXIDES AND MILL FINISH. USE OF ABRASIVE REMOVAL TECHNIQUES IS NOT ALLOWED. REFER TO LIGO-E0900364.
- 8. ALL PARTS SHALL BE MANUFACTURED IN ACCORDANCE WITH LIGO SPECIFICATION E0900364.
- 9. ALL MATERIAL IS TO BE VIRGIN MATERIAL (i.e. NO WELD REPAIRS, PLUGS OR RECYCLED MATERIAL). NO REPAIRS SHALL BE MADE UNLESS APPROVED IN ADVANCE, AND IN WRITING, BY LIGO LABORATORY. REFER TO LIGO-E0900364.
- 10. USE +0.005" OVERSIZED TAPS FOR ALL TAPPED HOLES EXCEPT #2-56.
- 11. USE +0.003" OVERSIZED TAPS FOR ALL #2-56 TAPPED HOLES.

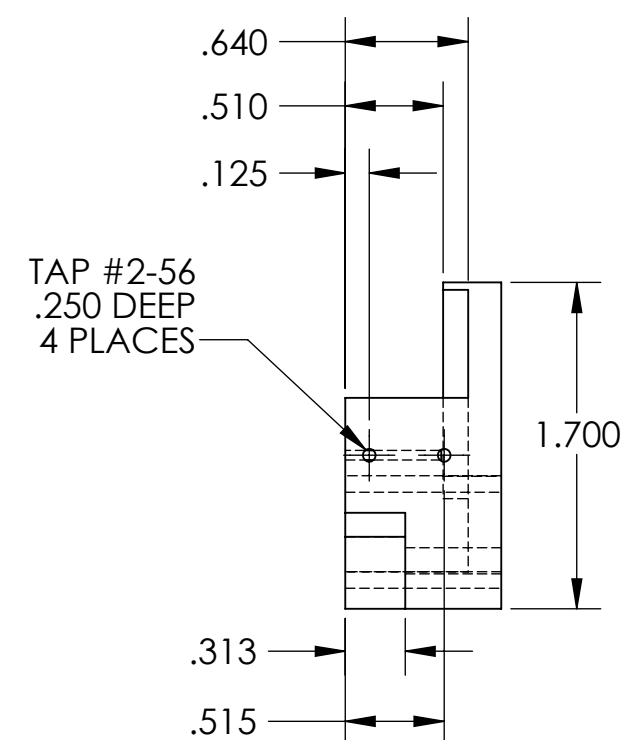
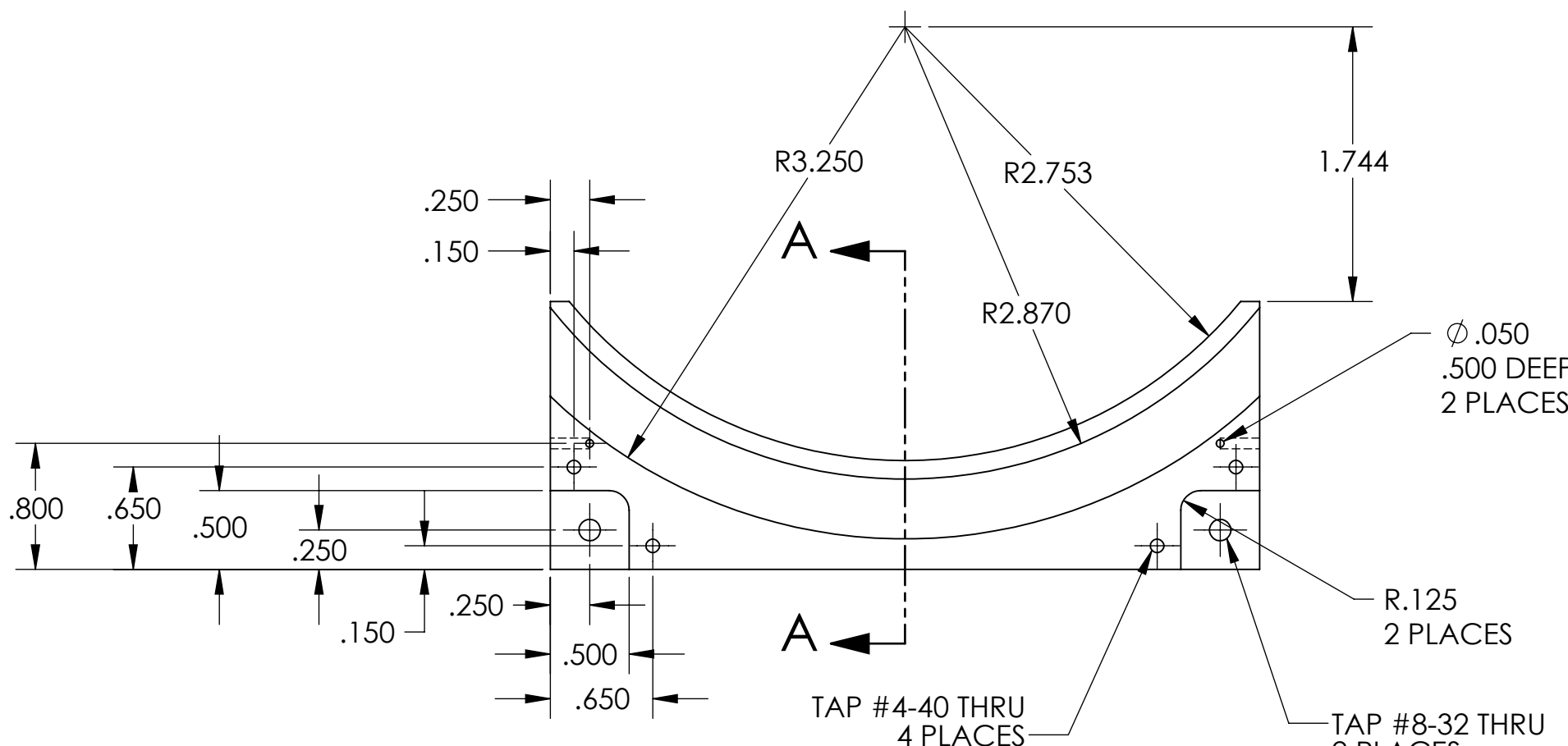
| REV. | DATE | DCN # | DRAWING TREE # |
|------|------|-------|----------------|
| - | - | - | - |
| - | - | - | - |
| - | - | - | - |

SEE NOTE 5

PART IS SYMMETRIC



SECTION A-A



NOTES AND TOLERANCES: (UNLESS OTHERWISE SPECIFIED)

DIMENSIONS ARE IN INCHES
 TOLERANCES:
 .XX ± .01
 .XXX ± .005
 ANGULAR ± 0.1°

1. INTERPRET DRAWING PER ASME Y14.5-1994.
 2. REMOVE ALL SHARP EDGES, .005-.015, FOR MACHINED PARTS. ROUND ALL EDGES APPROXIMATELY R.02 FOR SHEET METAL PARTS.
 3. DO NOT SCALE FROM DRAWING.
 4. ALL MACHINING FLUIDS MUST BE FULLY SYNTHETIC, FULLY WATER SOLUBLE AND FREE OF SULFUR, SILICONE, AND CHLORINE.

MATERIAL 6061 Alloy FINISH 63 μinch

LIGO UNIVERSITY OF FLORIDA CALIFORNIA INSTITUTE OF TECHNOLOGY MASSACHUSETTS INSTITUTE OF TECHNOLOGY
 SYSTEM ADVANCED LIGO SUB-SYSTEM 100
 NEXT ASSY D1101566

| | | | |
|------------|------------|---------------|---------------|
| PART NAME | | BEARING BLOCK | |
| DESIGNER | L.WILLIAMS | 15 AUG 2011 | SIZE DWG. NO. |
| DRAFTER | L.WILLIAMS | 15 AUG 2011 | B |
| CHECKER | | | D1101579 |
| APPROVAL | | | REV. v1 |
| SCALE: 1:1 | | PROJECTION: | |
| | | SHEET 1 OF 1 | |

D1101579_ALIGO_IO_FL_RHWP_BEARING_BLOCK, PART PDM REV: X-001, DRAWING PDM REV: X-001