

8 7 6 5 4 3 2 1

NOTES CONTINUED:

5 BAG AND TAG PARTS INDIVIDUALLY WITH THEIR DRAWING NUMBER, REVISION, VARIANT OR "TYPE" (IF APPLICABLE), AND QUANTITY. EXAMPLE (TAG): DXXXXXX-VY, TYPE-XX, QTY: 1

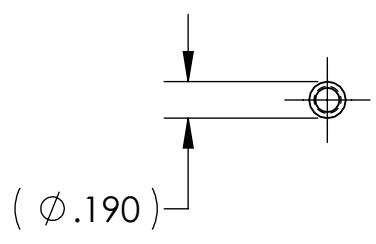
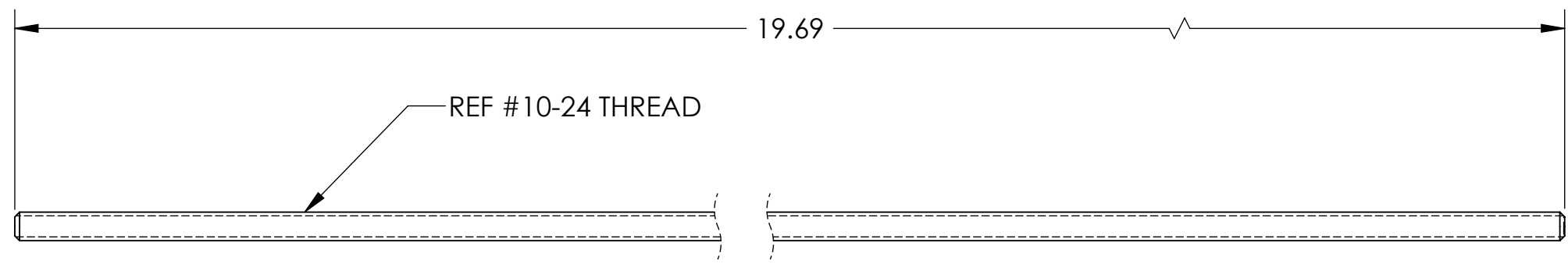
6. APPROXIMATE WEIGHT = 0.158 LBS.

8. ALL PARTS SHALL BE MANUFACTURED IN ACCORDANCE WITH LIGO SPECIFICATION E000364.

9. SURFACE FINISH TO BE AS-PROCESSED FROM MILL/SUPPLIER, FREE FROM SCRATCHES OR GOUGES.

10. MAKE FROM MCMASTER CARR PART NO. 98804A011 OR EQUIV.

REV.	DATE	DCN #	DRAWING TREE #
v1	04 AUG 2011	E110351	-
v2	10-2-12	to follow	-
-	-	-	-



D1101557_d1101557 TMS TELE SAFETY SUPPORT TURNBUCKLE, SIDE, SHORT, THREADED ROD, PART PDM REV: X-011, DRAWING PDM REV: X-004

D C B A

D C B A

NOTES AND TOLERANCES: (UNLESS OTHERWISE SPECIFIED)				LIGO CALIFORNIA INSTITUTE OF TECHNOLOGY MASSACHUSETTS INSTITUTE OF TECHNOLOGY		PART NAME		REV.				
DIMENSIONS ARE IN INCHES TOLERANCES: .XX ± .02 .XXX ± .010 ANGULAR ± 1.0°				1. INTERPRET DRAWING PER ASME Y14.5-1994. 2. REMOVE ALL SHARP EDGES, .005-.015, FOR MACHINED PARTS. ROUND ALL EDGES APPROXIMATELY R.02 FOR SHEET METAL PARTS. 3. DO NOT SCALE FROM DRAWING. 4. ALL MACHINING FLUIDS MUST BE FULLY SYNTHETIC, FULLY WATER SOLUBLE AND FREE OF SULFUR, SILICONE, AND CHLORINE.		ADVANCED LIGO		AOS		DESIGNER J. TERRAZAS 04 AUG 2011 DRAFTER J. TERRAZAS 04 AUG 2011 CHECKER APPROVAL	PART NAME dLIGO TMS TELE SAFETY SUPPORT TURNBUCKLE, SIDE, SHORT, THREADED ROD SIZE B DWG. NO. D1101557 SCALE: 1:4 PROJECTION:	REV. v2 SHEET 1 OF 1
MATERIAL 18-8 SSSL				FINISH µinch		NEXT ASSY D1101506						

8 7 6 5 4 3 2 1