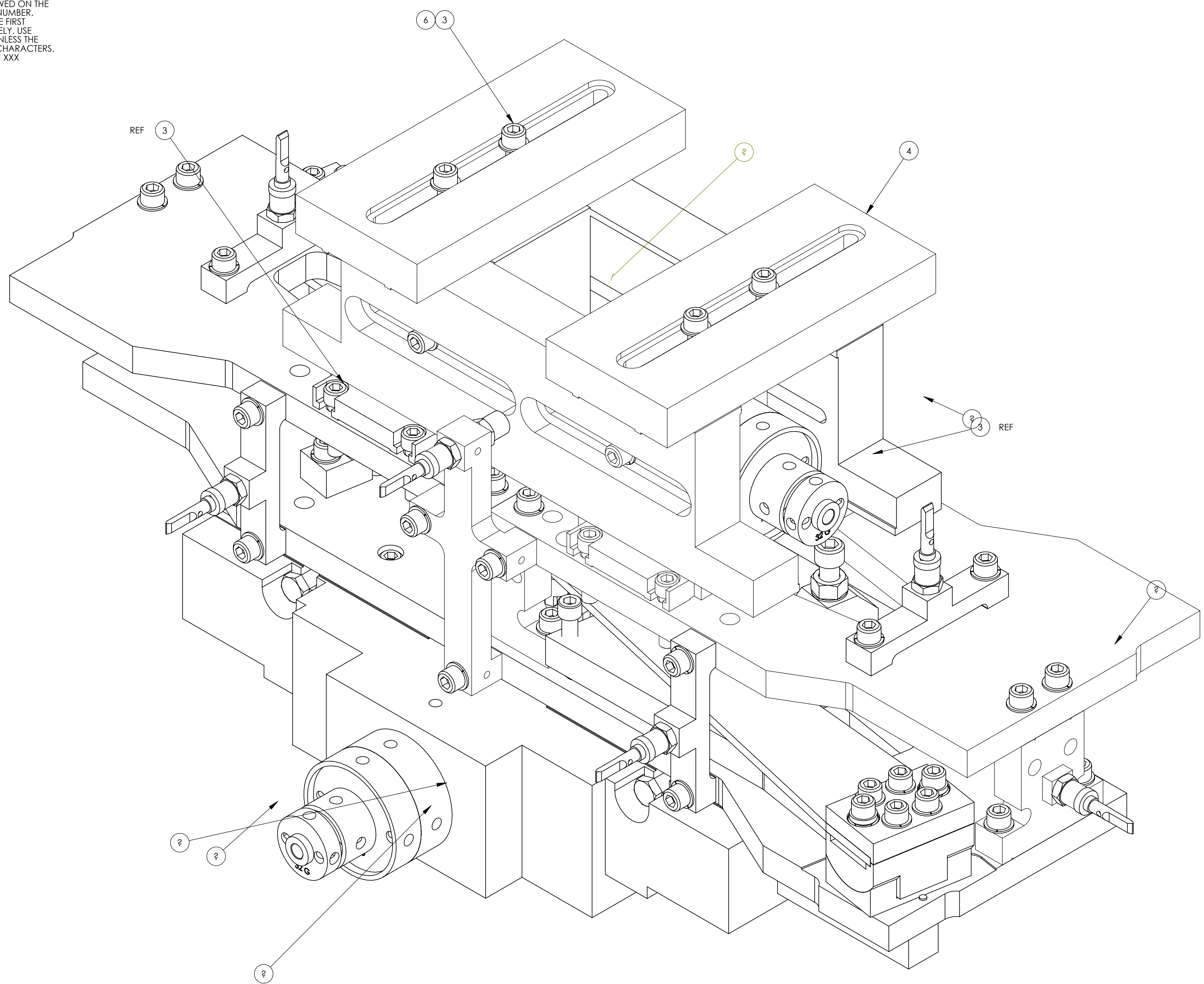


NOTES CONTINUED:  
 5. SCRIBE, ENGRAVE (A VIBRATORY TOOL MAY BE USED), LASER MARK OR MECHANICALLY STAMP (NO INKS OR DYES) DRAWING PART NUMBER, REVISION (AND VARIANT OR 'TYPE' IF APPLICABLE) ON NOTED SURFACE OF PART FOLLOWED ON THE NEXT LINE WITH A THREE DIGIT SERIAL NUMBER. SERIAL NUMBERS START AT 001 FOR THE FIRST ARTICLE AND PROCEED CONSECUTIVELY. USE MINIMUM 0.12" HIGH CHARACTERS, UNLESS THE SIZE OF THE PART DICTATES SMALLER CHARACTERS. EXAMPLE: DXXXXXX-VY, TYPE-XX, S/N XXX

REV.	DATE	DCN #	DRAWING TREE #
v1	26 MAR 2012	E1101214	-
-	-	-	-
-	-	-	-



ITEM NO.	PART NUMBER	REV	DESCRIPTION	MATERIAL	QTY RQD	SPARE	TOTAL
11	D1200432-01	v1	αLIGO TMS BALANCE WEIGHT, 31 G	304 SSSL	4		0
10	D1200432-02	v1	αLIGO TMS BALANCE WEIGHT, 62 G	304 SSSL	4		0
9	D1200431-01	v1	αLIGO TMS BALANCE WEIGHT, 125 G	304 SSSL	4		0
8	D1200431-02	v1	αLIGO TMS BALANCE WEIGHT, 250 G	304 SSSL	4		0
7	D1100358	v1	TMS TELESCOPE MASS ATTACHMENT SCREW	TITANIUM	16		0
6	.250 VENT FL WSHR		.255 ID, .468 OD, .032 TH	18-8 SSSL	8		0
5	D1200405	v1	αLIGO TMS UPPER PITCH TRIM MASS	304 SSSL	2		0
4	D1101520	v1	αLIGO TMS UPPER ROLL TRIM MASS	304 SSSL	2		0
3	-		SCREW, SOCKET HEAD CAP, 1/4-20 UNC-2A X 1 LONG	Ag-PLATED 300 SSSL	18		0
2	D1101519	v1	αLIGO TMS TOP ADD MASS TOWER	304 SSSL	2		0
1	D1101527	v1	αLIGO TMS MASS SECONDARY ASSEMBLY	N/A	1		0

DIMENSIONS ARE IN INCHES		NOTES AND TOLERANCES: (UNLESS OTHERWISE SPECIFIED)	
TOLERANCES: .XX ± .01 .XXX ± .005		1. INTERPRET DRAWING PER ASME Y14.5-1994. 2. REMOVE ALL SHARP EDGES, .005-.015. 3. DO NOT SCALE FROM DRAWING. 4. ALL MACHINING FLUIDS MUST BE FULLY SYNTHETIC, FULLY WATER-SOLUBLE AND FREE OF SULFUR, SILICONE, AND CHLORINE.	
MATERIAL	FINISH	NEXT ASSY	
N/A	N/A μinch	D1000549	

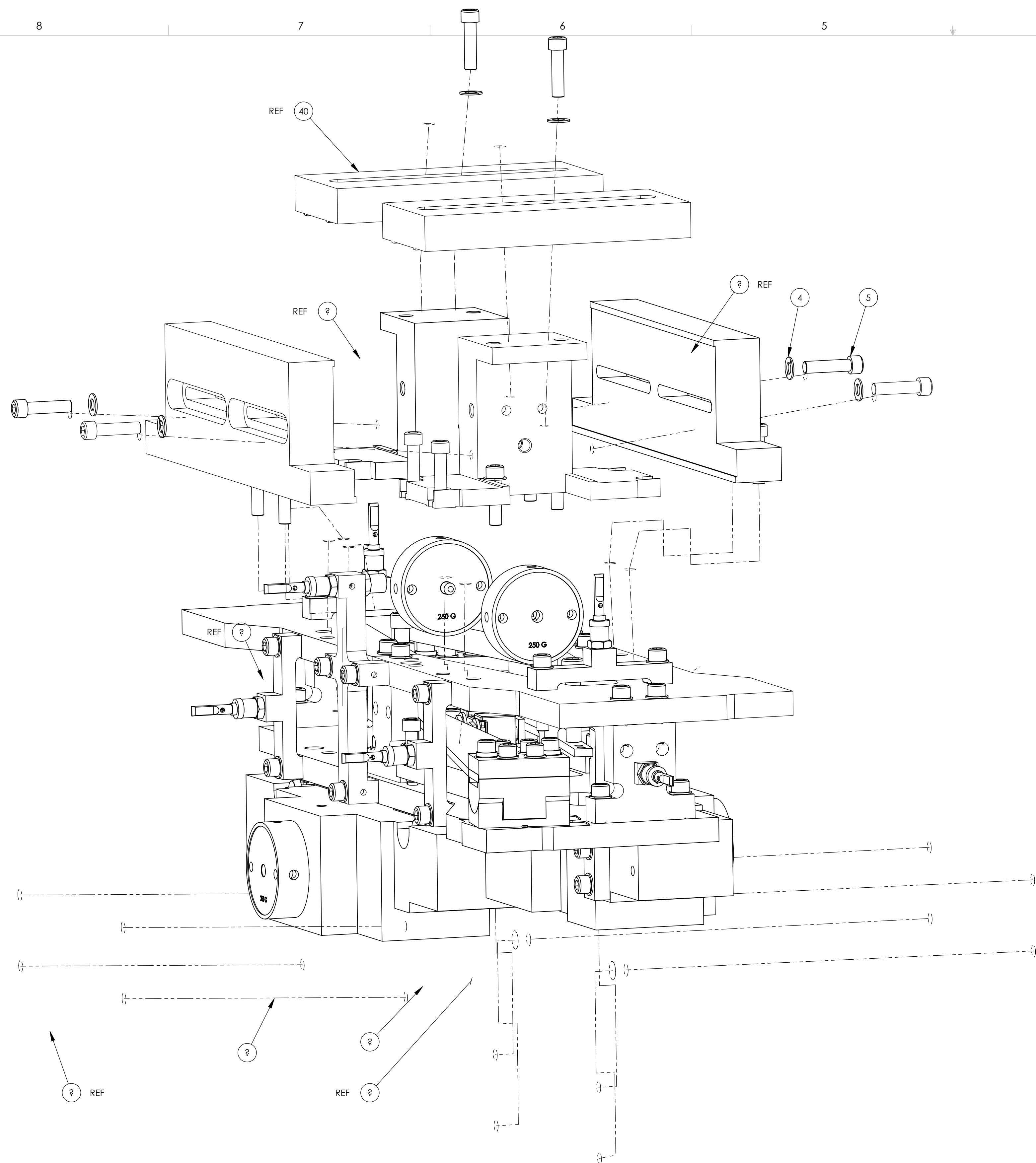
**ADVANCED LIGO** SUB-SYSTEM AOS

**CALIFORNIA INSTITUTE OF TECHNOLOGY**  
**MASSACHUSETTS INSTITUTE OF TECHNOLOGY**

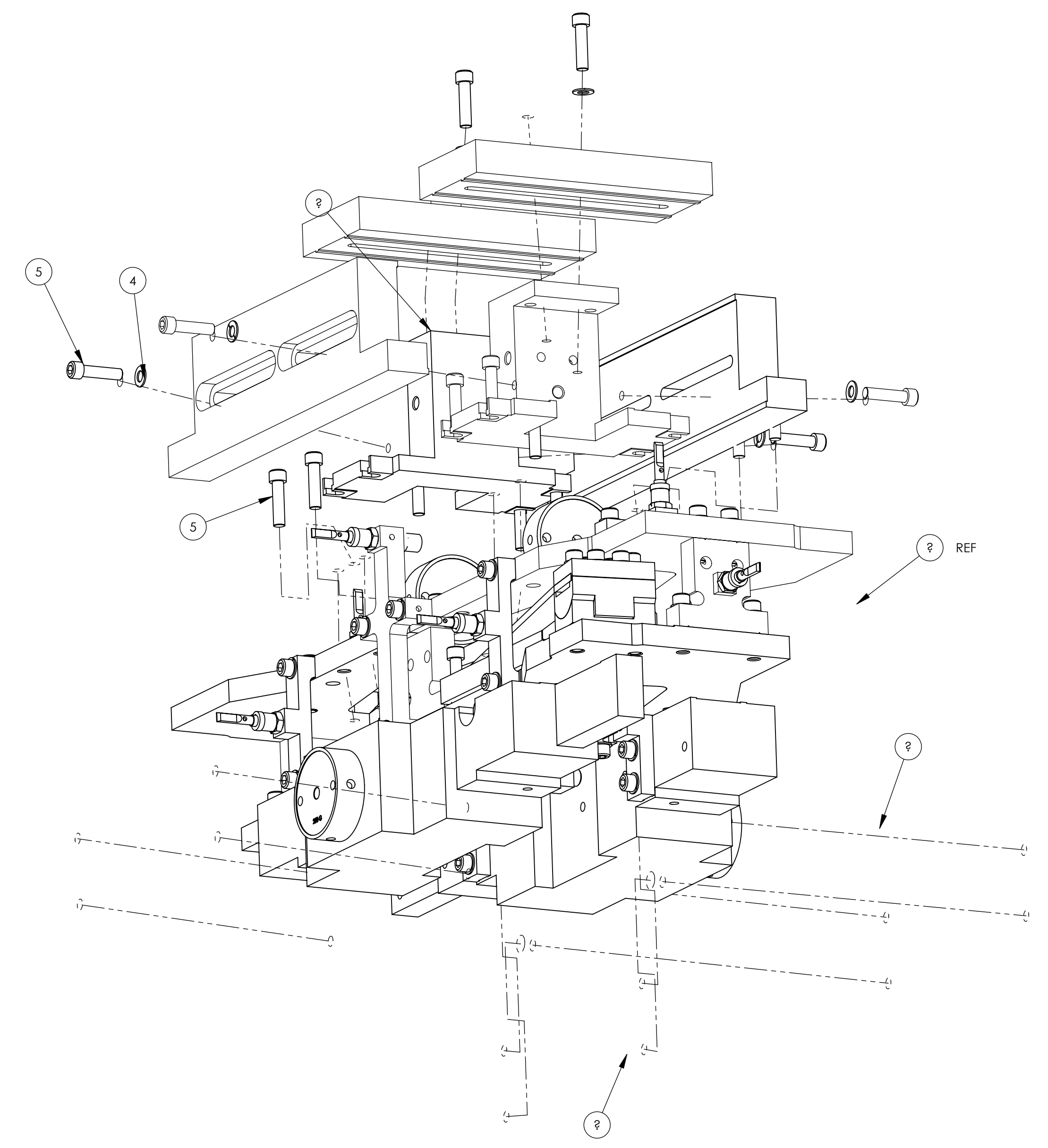
**αLIGO TMS MASS BALANCED ASSEMBLY**

DESIGNER	K. MAILAND	28 JUL 2011	SIZE	DWG. NO.	REV.
DRAFTER	C. CONLEY	26 MAR 2012	D	D1101526	v1
CHECKER	SEE DCN				
APPROVAL	SEE DCN		SCALE: NONE	PROJECTION:	SHEET 1 OF 3

D1101526 αLIGO TMS Mass Balanced Assembly - PART PDM REV: X-070, DRAWING PDM REV: X-002



**EXPLODED VIEW**



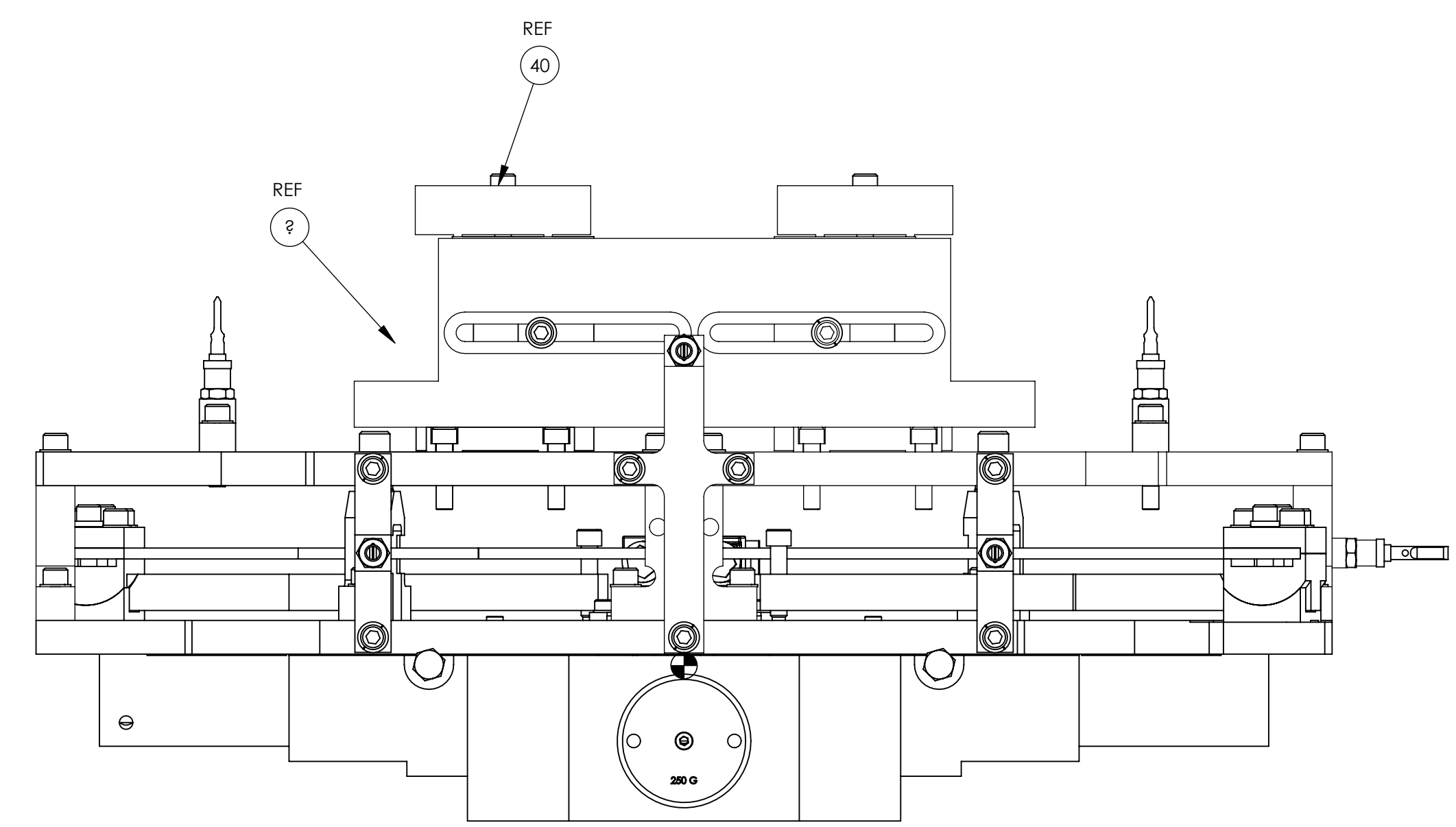
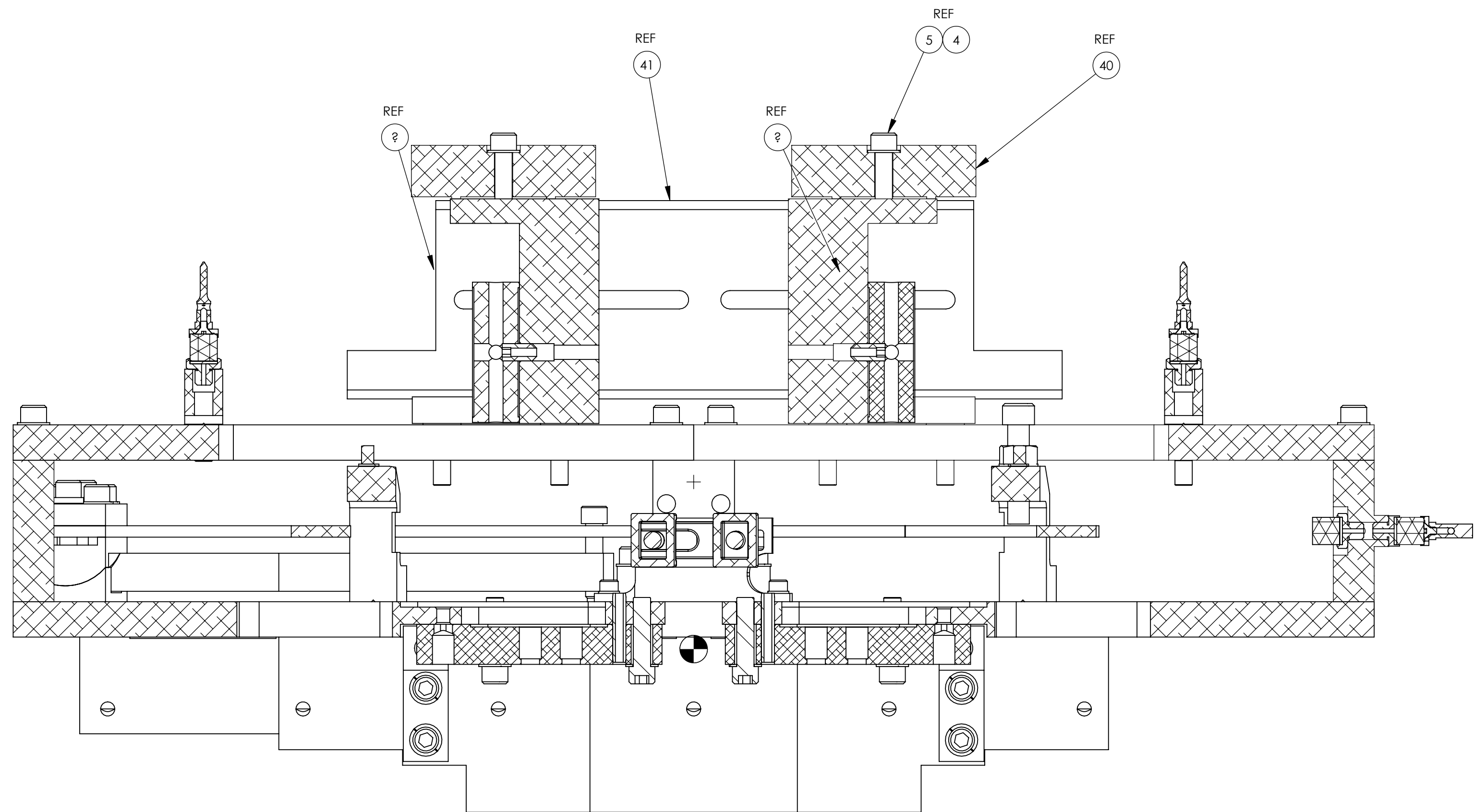
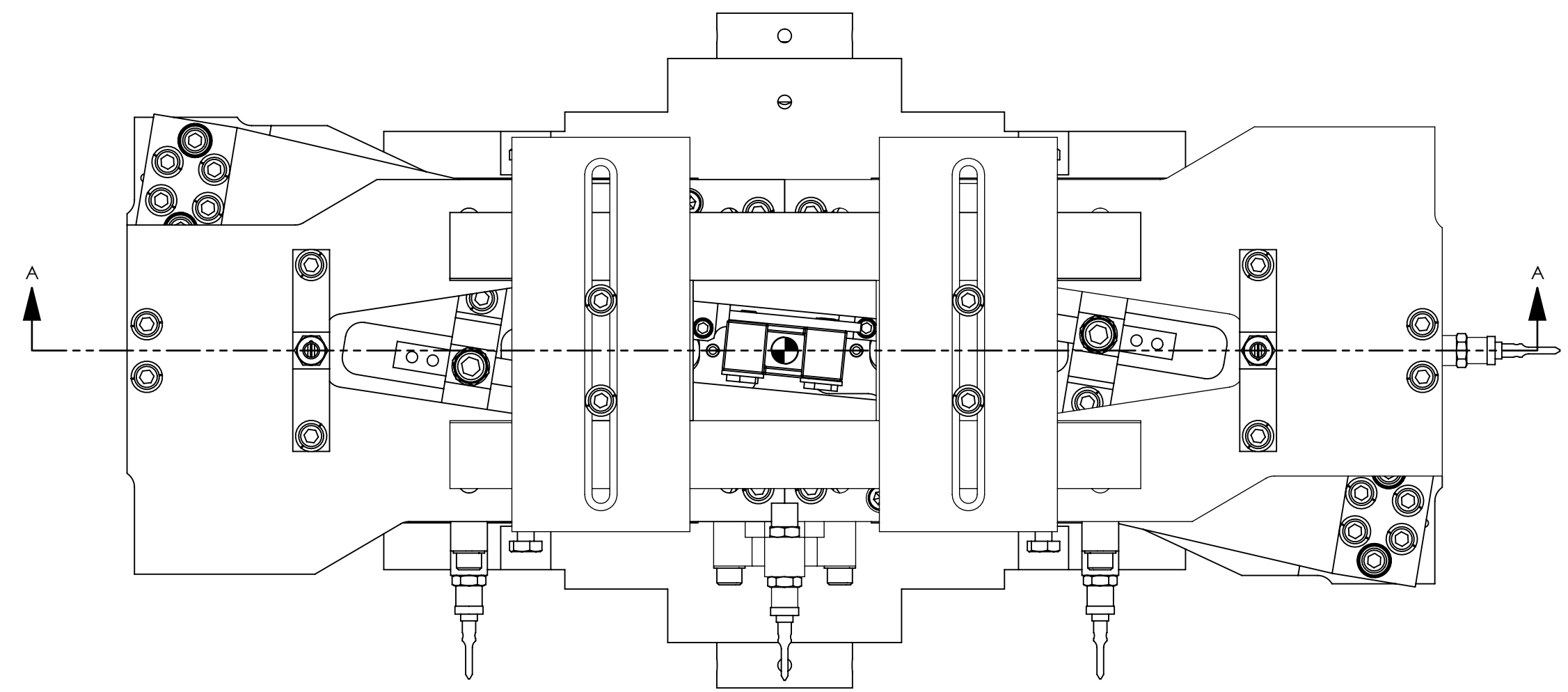
**EXPLODED VIEW**  
(FROM BOTTOM)

CALIFORNIA INSTITUTE OF TECHNOLOGY MASSACHUSETTS INSTITUTE OF TECHNOLOGY		REV.
SIZE	DWG. NO.	REV.
D	D1101526	v1
SCALE: 1:2	PROJECTION:	SHEET 2 OF 3

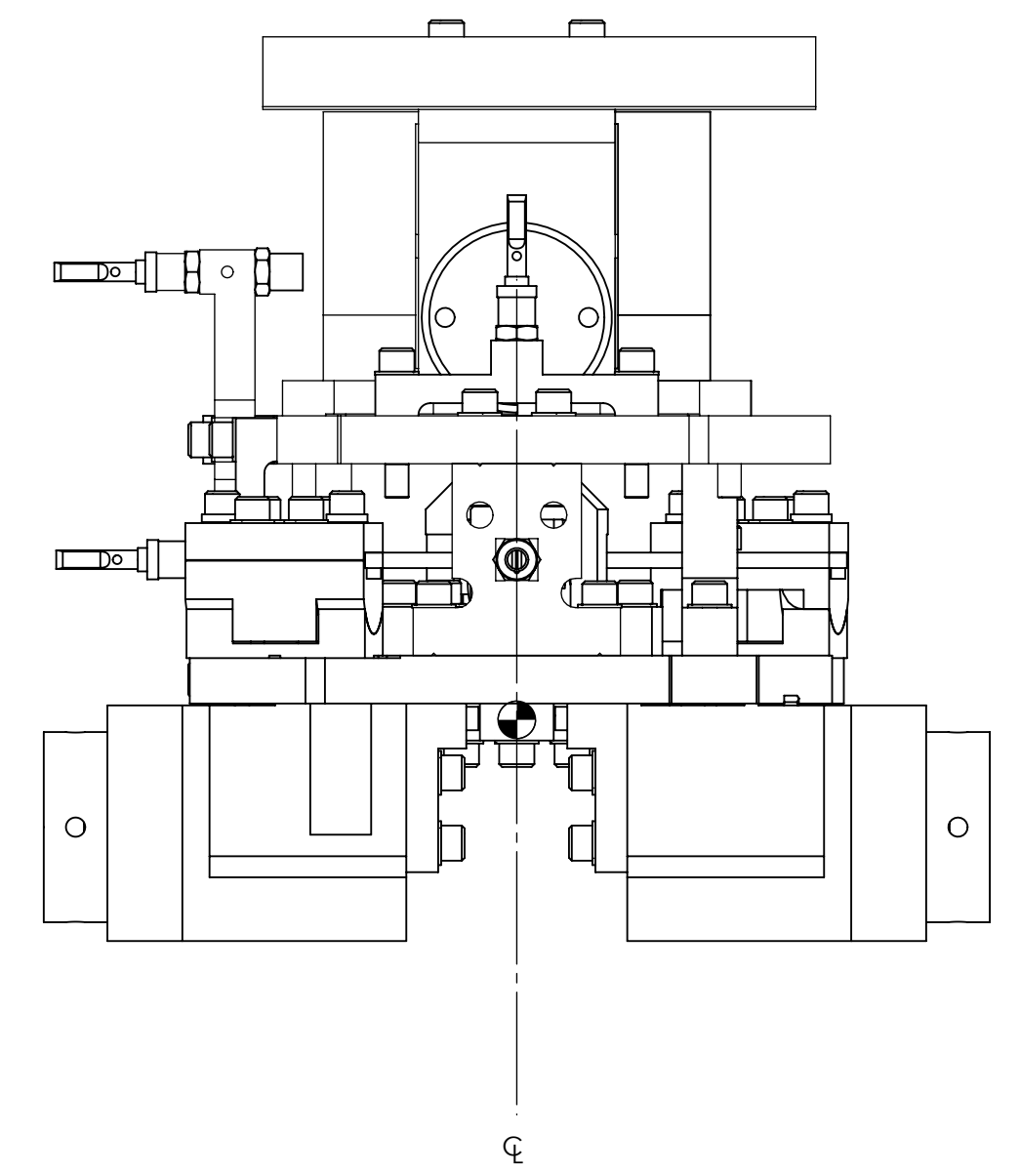
D1101526.dwg LIGO TMS Mass-Balanced Assembly, PART PDM REV. X-070, DRAWING PDM REV. X-002


8 7 6 5 4 3 2 1

H  
G  
F  
E  
D  
C  
B  
A



SECTION A-A



<b>LIGO</b> CALIFORNIA INSTITUTE OF TECHNOLOGY MASSACHUSETTS INSTITUTE OF TECHNOLOGY	
SIZE DWG. NO.	REV.
<b>D</b> D1101526	v1
SCALE: 1:2	PROJECTION: 
SHEET 3 OF 3	

8 7 6 5 4 3 2 1

D:\101526.dwg LIGO TMS Mass-Balanced Assembly\_PART PDM REV: X-070 DRAWING PDM REV: X-002