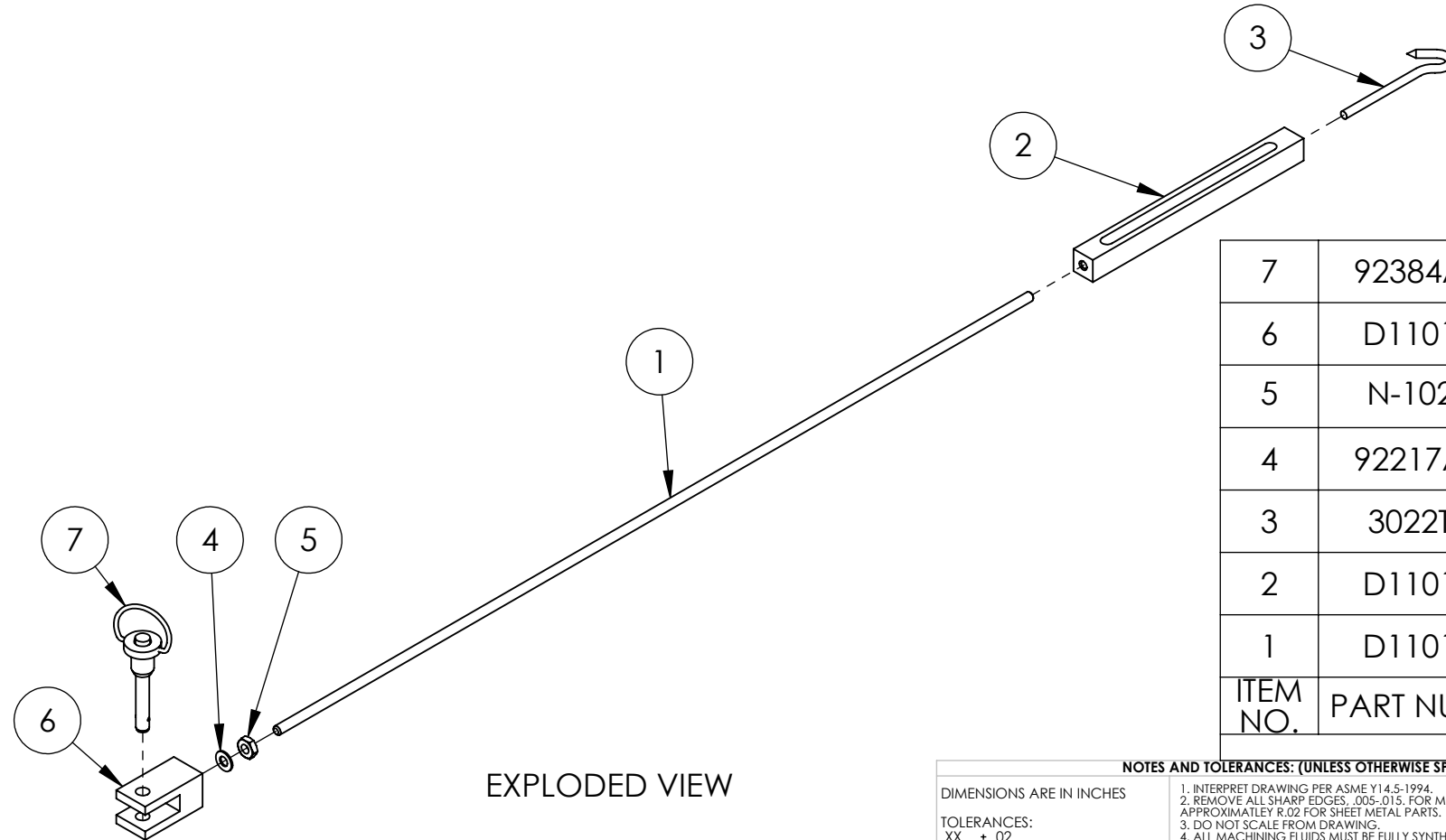
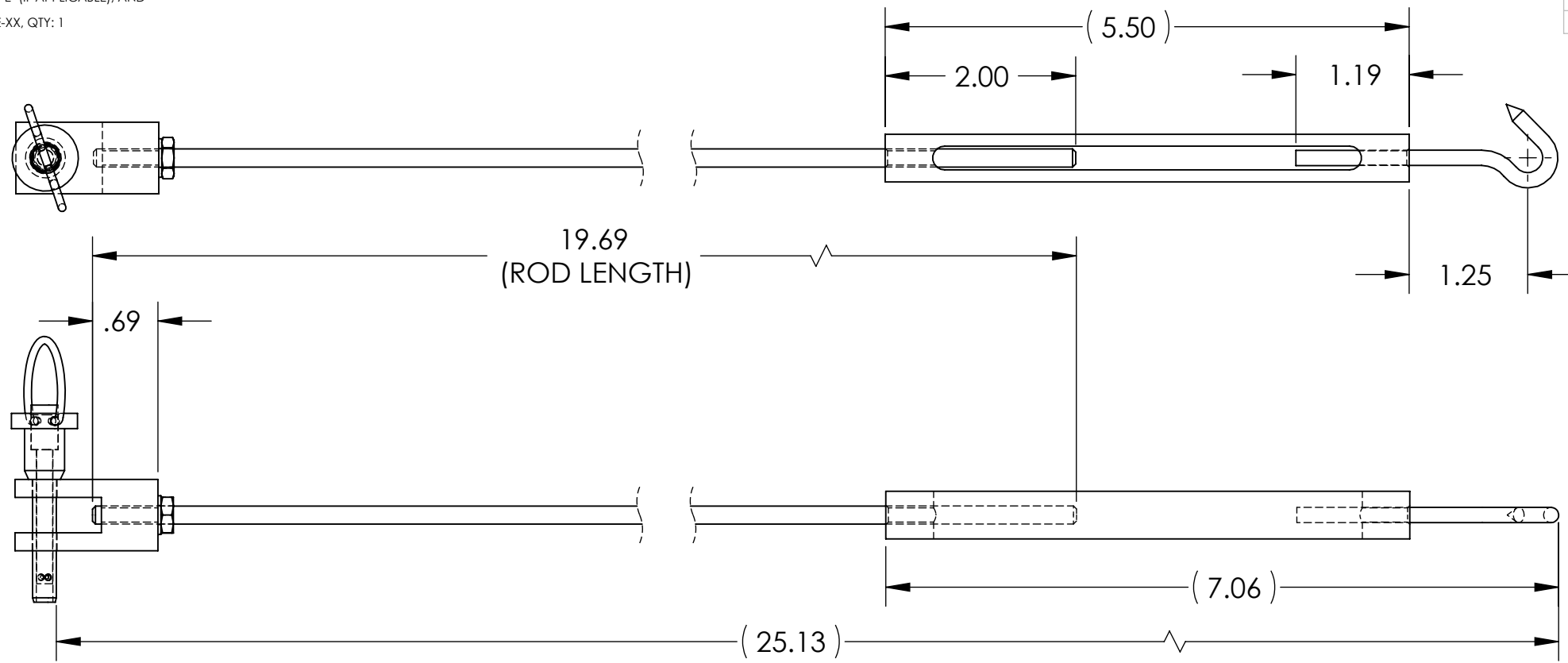


D1101506_qLIGO TMS TELE SAFETY SUPPORT TURNBUCKLE ASSY, SIDE, SHORT, PART PDM REV: X-017, DRAWING PDM REV: X-004

NOTES CONTINUED:
 5. BAG AND TAG PARTS INDIVIDUALLY WITH THEIR DRAWING NUMBER, REVISION, VARIANT OR "TYPE" (IF APPLICABLE), AND QUANTITY.
 EXAMPLE (TAG): DXXXXXX-VY, TYPE-XX, QTY: 1
 6. APPROXIMATE WEIGHT = 0.374 LBS.

REV.	DATE	DCN #	DRAWING TREE #
v1	04 AUG 2011	E1100351	-
v2	10-2-12	to follow	-
-	-	-	-



ITEM NO.	PART NUMBER	DESCRIPTION	MATERIAL	REQ	SPARE	TOTAL
7	92384A034	McMASTER, QUICK RELEASE PIN, .25 DIA X 1.020 USABLE LGTH, SSSL	18-8 SSSL	1		1
6	D1101550	qLIGO TMS TELE SAFETY SUPPORT TURNBUCKLE YOKE	6061-T6 Al	1		1
5	N-1024-A	UC-COMP, HEX NUT, #10-24, SSSL	Ag-PLATED 300 SSSL	1		1
4	92217A440	McMASTER, NO. 10 FLAT WASHER, .203 ID X .406 OD X .032 THK, ASME B18.00.1	18-8 SSSL	1		1
3	3022T861	McMASTER, TURNBUCKLE END HOOK, #10-24 X 2.50 ADJ X 1.875 THRD LGTH, SSSL	316 SSSL	1		1
2	D1101500	qLIGO TMS TELE SAFETY SUPPORT TURNBUCKLE	6061-T6 Al	1		1
1	D1101557	qLIGO TMS TELE SAFETY SUPPORT TURNBUCKLE, SIDE, SHORT, THREADED ROD	18-8 SSSL	1		1

EXPLODED VIEW

NOTES AND TOLERANCES: (UNLESS OTHERWISE SPECIFIED)
 1. INTERPRET DRAWING PER ASME Y14.5-1994.
 2. REMOVE ALL SHARP EDGES, .005-.015, FOR MACHINED PARTS. ROUND ALL EDGES APPROXIMATELY R.02 FOR SHEET METAL PARTS.
 3. DO NOT SCALE FROM DRAWING.
 4. ALL MACHINING FLUIDS MUST BE FULLY SYNTHETIC, FULLY WATER SOLUBLE AND FREE OF SULFUR, SILICONE, AND CHLORINE.

DIMENSIONS ARE IN INCHES
 TOLERANCES:
 .XX ± .02
 .XXX ± .010
 ANGULAR ± 1.0°

MATERIAL N/A FINISH N/A μinch

LIGO CALIFORNIA INSTITUTE OF TECHNOLOGY MASSACHUSETTS INSTITUTE OF TECHNOLOGY

SYSTEM ADVANCED LIGO SUB-SYSTEM AOS

PART NAME qLIGO TMS TELE SAFETY SUPPORT TURNBUCKLE ASSY, SIDE, SHORT

DESIGNER J. TERRAZAS 04 AUG 2011 SIZE DWG. NO. B D1101506 REV. v2
 DRAFTER J. TERRAZAS 04 AUG 2011
 CHECKER
 APPROVAL

SCALE: 1:4 PROJECTION: SHEET 1 OF 1