

NOTES CONTINUED:

③ SCRIBE, ENGRAVE (A VIBRATORY TOOL MAY BE USED), DO NOT STAMP OR LASER MARK (NO INKS OR DYES) DRAWING PART NUMBER, REVISION (AND VARIANT OR "TYPE" IF APPLICABLE) ON NOTED SURFACE OF PART FOLLOWED ON THE NEXT LINE WITH A THREE DIGIT SERIAL NUMBER. SERIAL NUMBERS START AT 001 FOR THE FIRST ARTICLE AND PROCEED CONSECUTIVELY. USE MINIMUM 0.12" HIGH CHARACTERS, UNLESS THE SIZE OF THE PART DICTATES SMALLER CHARACTERS.
EXAMPLE: DXXXXXX-VY, TYPE-XX, S/N XXX
DO NOT APPLY MARK ON SUPER #8 SIDE

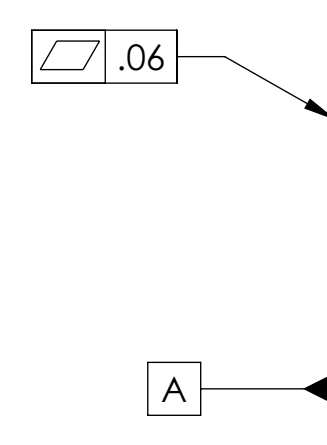
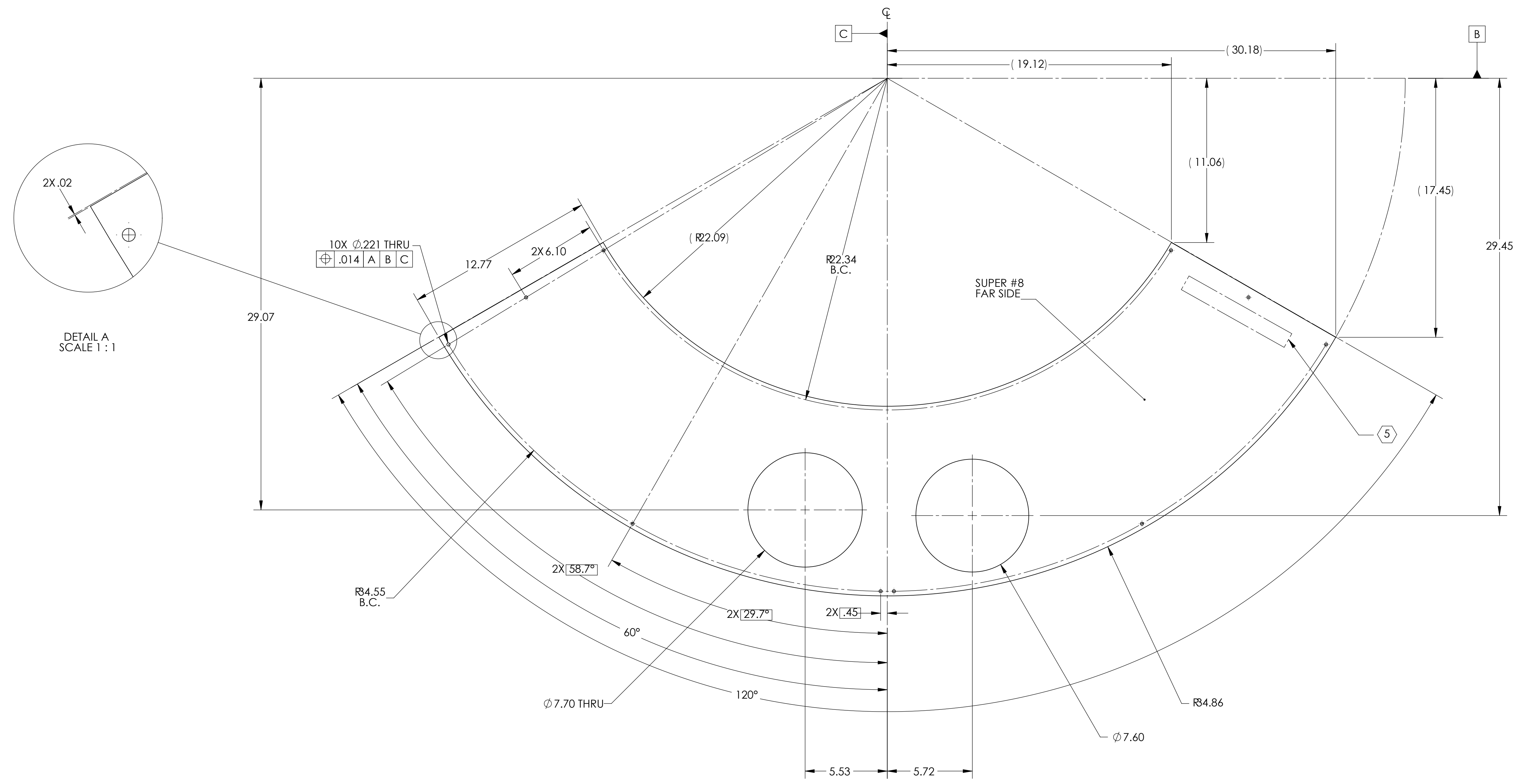
6. APPROXIMATE WEIGHT = 10.974 LBS

7. ALL PARTS SHALL BE MANUFACTURED IN ACCORDANCE WITH LIGO SPECIFICATION E0900364.

8. ALL MATERIAL IS TO BE VIRGIN MATERIAL (i.e. NO WELD REPAIRS, PLUGS OR RECYCLED MATERIAL), NO REPAIRS SHALL BE MADE UNLESS APPROVED IN ADVANCE, AND IN WRITING, BY LIGO LABORATORY. REFER TO LIGO-E0900364.

⑨ PART TO BE OXIDIZED PER LIGO SPECIFICATION E1100842.

| REV. | DATE | DCN # | DRAWING TREE # |
|------|-------------|-------------|----------------|
| v1 | 27 JUL 2011 | E1000360-v2 | - |
| v2 | 30 OCT 2012 | E1000360-v3 | - |
| | | - | - |



| | | | | | | | |
|---|--|--|--|---|--|-----------------------------------|--|
| DIMENSIONS ARE IN INCHES | | NOTES AND TOLERANCES: (UNLESS OTHERWISE SPECIFIED) | | CALIFORNIA INSTITUTE OF TECHNOLOGY MASSACHUSETTS INSTITUTE OF TECHNOLOGY | | PART NAME | |
| TOLERANCES: .XX ± .03 .XXX ± .010 | | 1. INTERPRET DRAWING PER ASME Y14.5-1994. 2. REMOVE ALL SHARP EDGES AND BURRS AND ROUND EDGES. FULL RADIUS ON ALL EDGES AND HOLES. 3. DO NOT SCALE FROM DRAWING. 4. ALL MACHINING FLUIDS MUST BE FULLY SYNTHETIC, FULLY WATER SOLUBLE AND FREE OF SULFUR, SILICONE, AND CHLORINE. | | SYSTEM ADVANCED LIGO | | SUB-SYSTEM AOS | |
| ANGULAR ± 0.5° | | MATERIAL 18 GAUGE 304 SSTL | | FINISH SUPER #8 ⑨ | | NEXT ASSY D1003183 | |
| | | | | DESIGNER TQ. NGUYEN 27 JUL 2011 | | SIZE DWG. NO. D 1101502 | |
| | | | | DRAFTER TQ. NGUYEN 27 JUL 2011 | | REV. v2 | |
| | | | | CHECKER M. SMITH | | SCALE: 1:4 PROJECTION: | |
| | | | | APPROVAL C. TORRES | | SHEET 1 OF 1 | |

D:\101502.dwg_Montréal_City_Baffle_Lower_Face_Plate_ETM_X_PART.PDM.REV.X016.DRAWING.PDM.REV.X013