

8 7 6 5 4 3 2 1

NOTES CONTINUED:

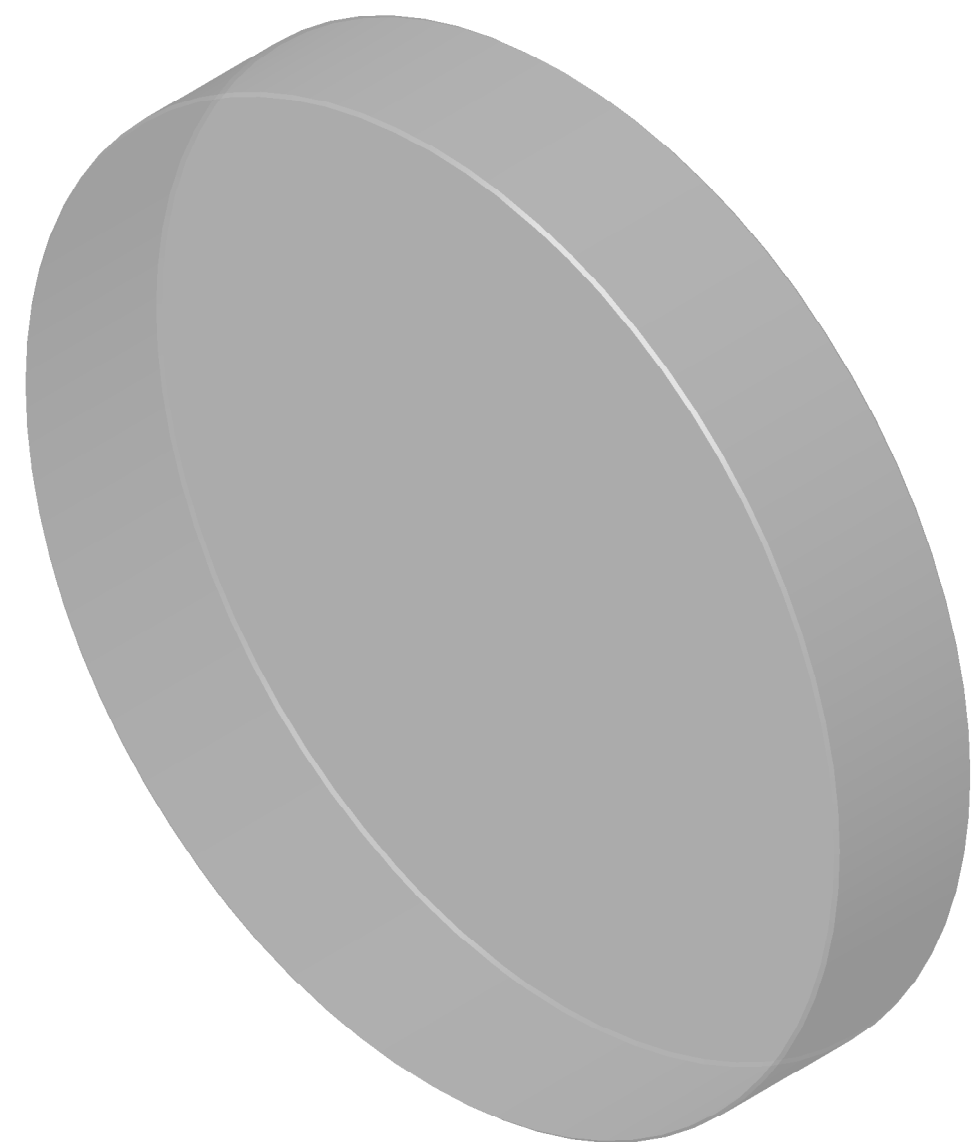
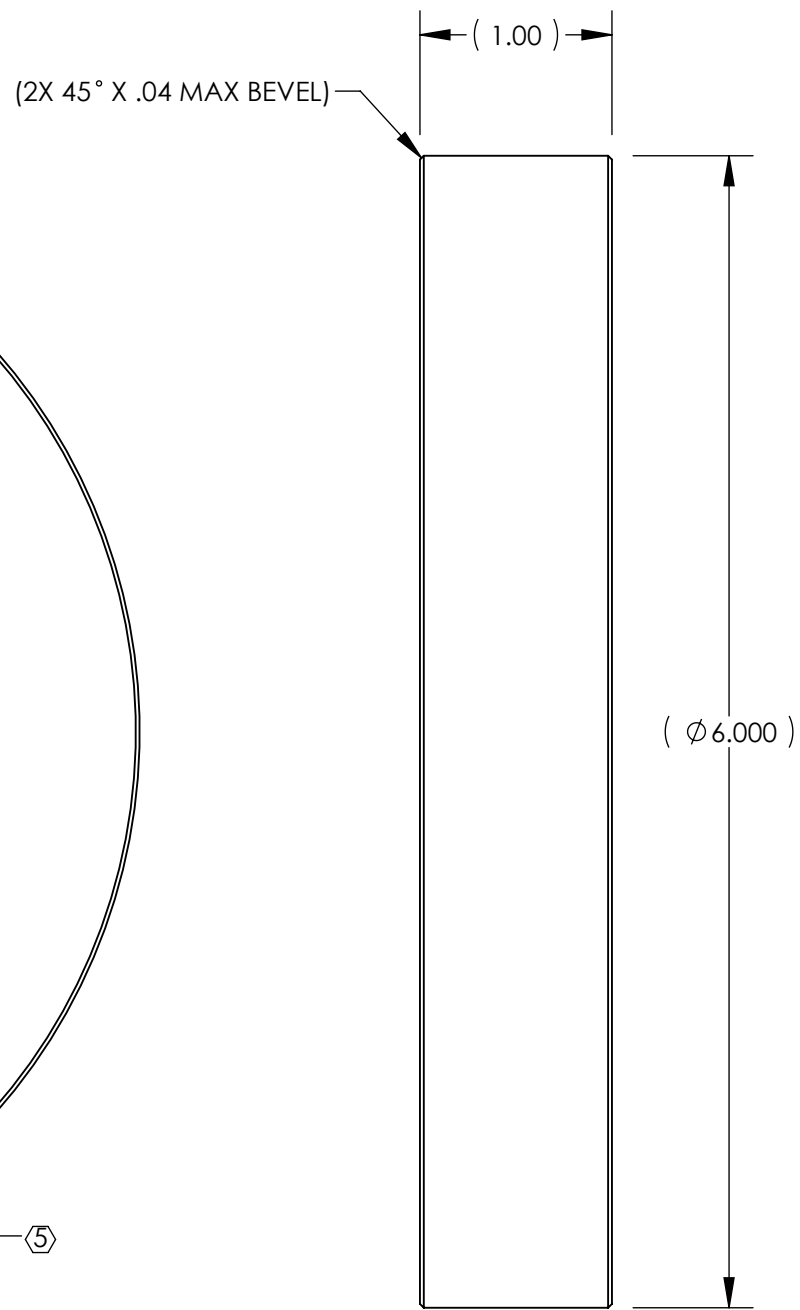
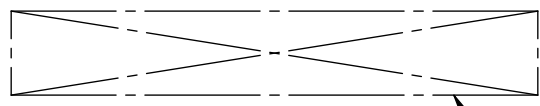
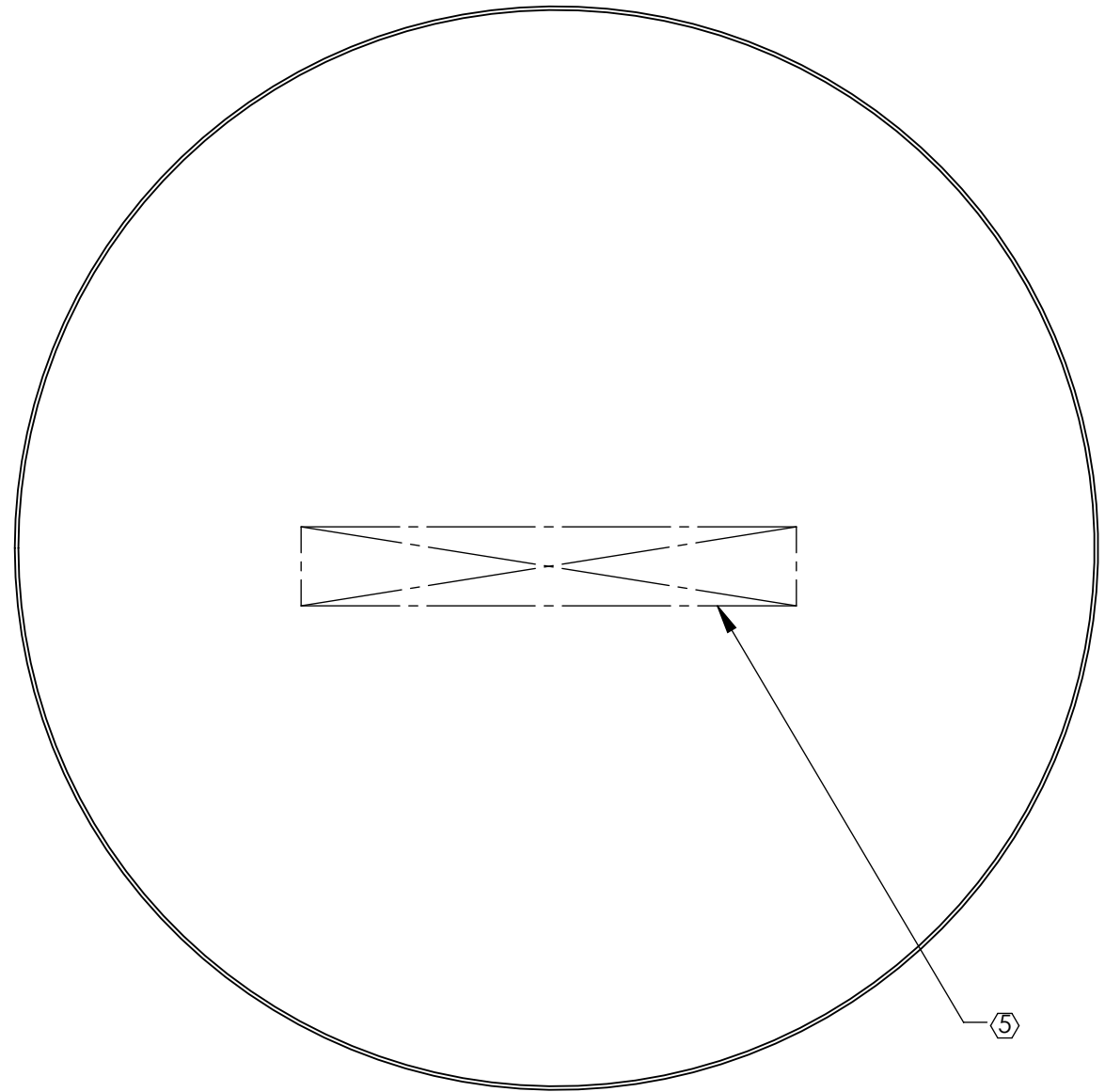
⑤ SCRIBE, ENGRAVE (A VIBRATORY TOOL MAY BE USED), LASER MARK OR MECHANICALLY STAMP (NO INKS OR DYES) DRAWING PART NUMBER, REVISION (AND VARIANT OR "TYPE" IF APPLICABLE) ON NOTED SURFACE OF PART FOLLOWED ON THE NEXT LINE WITH A THREE DIGIT SERIAL NUMBER. SERIAL NUMBERS START AT 001 FOR THE FIRST ARTICLE AND PROCEED CONSECUTIVELY. USE MINIMUM 0.12" HIGH CHARACTERS, UNLESS THE SIZE OF THE PART DICTATES SMALLER CHARACTERS. EXAMPLE: DXXXXXX-VY, TYPE-XX, S/N XXX

6. APPROXIMATE WEIGHT = 2.45 LB [1.11 KG].

⑦ MAKE FROM:
EDMOND OPTICS NT31-393-577
(PROTECTED SILVER COATED MIRROR, 6" DIA, 1.00" THK, ZERODUR, 1/10 WAVE)

REV	DATE	DCN #	DRAWING TREE #
v1	22 JUL 2011	E1100351	-
-	-	-	-
-	-	-	-

D
C
B
A



D
C
B
A

D1101480 TMS Telescope First Fold Mirror, PART PDM REV: X-001, DRAWING PDM REV: X-004

NOTES AND TOLERANCES: (UNLESS OTHERWISE SPECIFIED)				LIGO CALIFORNIA INSTITUTE OF TECHNOLOGY MASSACHUSETTS INSTITUTE OF TECHNOLOGY		PART NAME						
DIMENSIONS ARE IN INCHES TOLERANCES: .XX ± .XXX ± ANGULAR ± °				1. INTERPRET DRAWING PER ASME Y14.5-1994. 2. BREAK EDGES: 1:0 2:0 3. DO NOT SCALE FROM DRAWING. 4. ALL MACHINING FLUIDS MUST BE FULLY SYNTHETIC, FULLY WATER SOLUBLE AND FREE OF SULFUR, SILICONE, AND CHLORINE.		TMS TELESCOPE FIRST FOLD MIRROR						
MATERIAL		FINISH		SYSTEM		SUB-SYSTEM		DESIGNER	DATE	SIZE	DWG. NO.	REV.
⑦		N/A		ADVANCED LIGO		AOS		K. MAILAND	22 JUL 2011	B	D1101480	v1
NEXT ASSY				D1000084		CHECKER		SEE DCN		SCALE: NONE PROJECTION:		
						APPROVAL		SEE DCN		SHEET 1 OF 1		

8 7 6 5 4 3 2 1