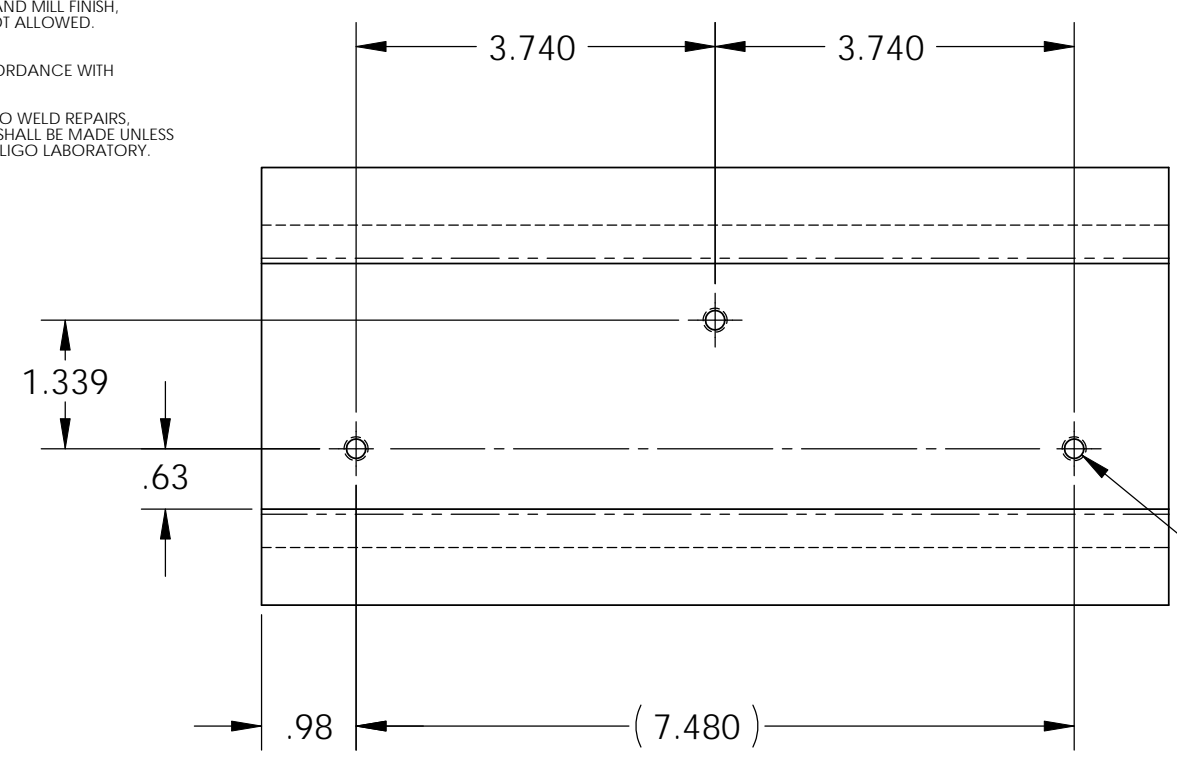


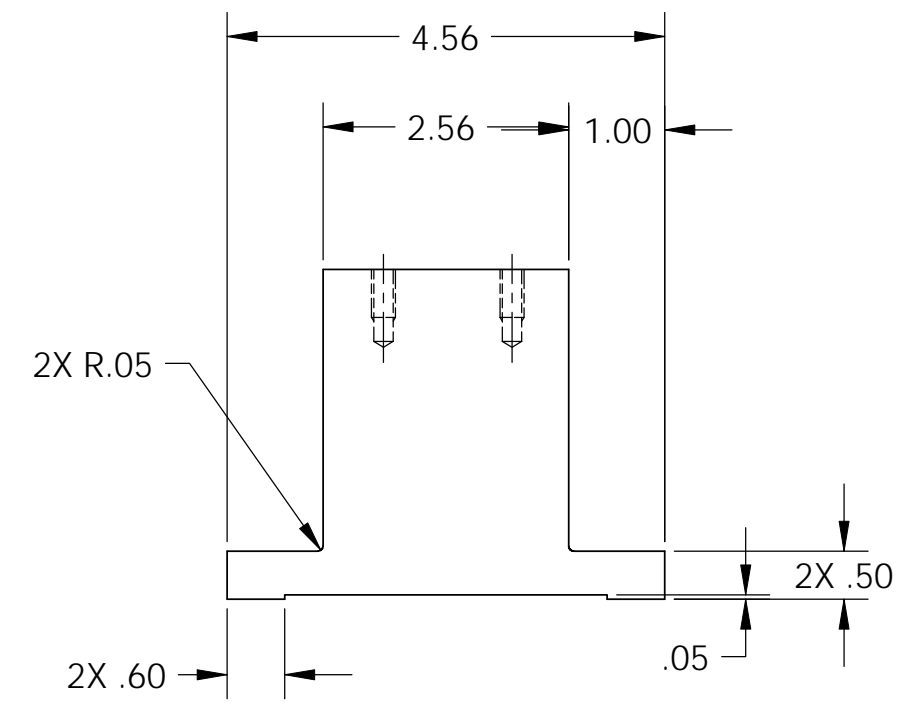
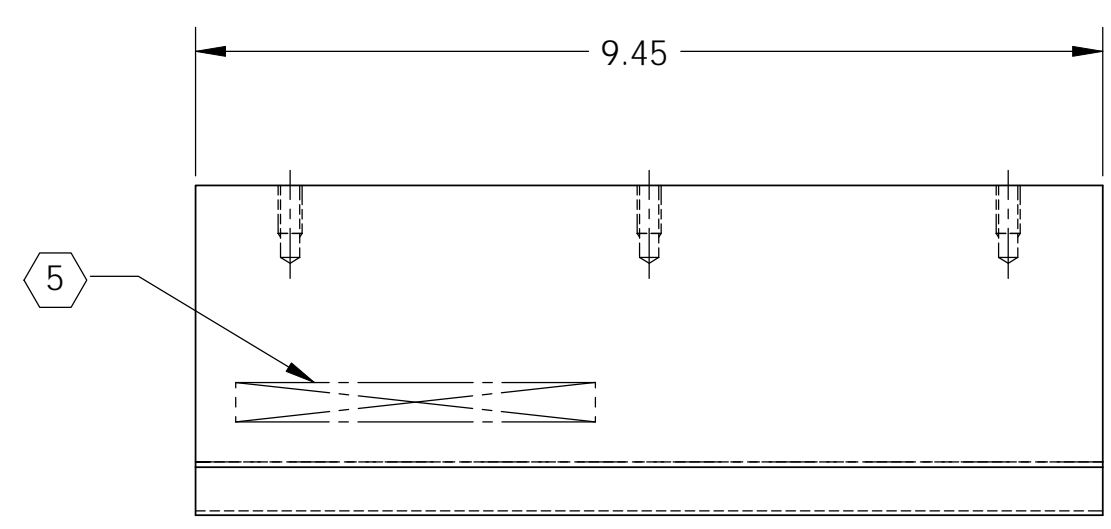
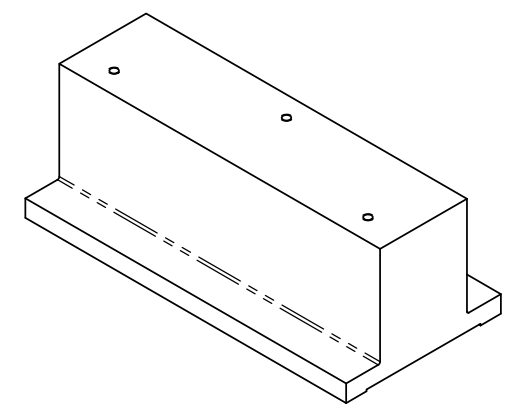
D1101447_aLIGO TMS TELE ALIGNMENT MIRROR MOUNT, PART PDM REV: X-003, DRAWING PDM REV: X-004

- NOTES CONTINUED:**
- 5. SCRIBE, ENGRAVE (A VIBRATORY TOOL MAY BE USED), LASER MARK OR MECHANICALLY STAMP (NO INKS OR DYES) DRAWING PART NUMBER, REVISION (AND VARIANT OR "TYPE" IF APPLICABLE) ON NOTED SURFACE OF PART FOLLOWED ON THE NEXT LINE WITH A THREE DIGIT SERIAL NUMBER. SERIAL NUMBERS START AT 001 FOR THE FIRST ARTICLE AND PROCEED CONSECUTIVELY. USE MINIMUM 0.12" HIGH CHARACTERS, UNLESS THE SIZE OF THE PART DICTATES SMALLER CHARACTERS. EXAMPLE: DXXXXXX-VY, TYPE-XX, S/N XXX
 - 6. APPROXIMATE WEIGHT = 4.024 LBS.
 - 7. MACHINE ALL SURFACES TO REMOVE OXIDES AND MILL FINISH. USE OF ABRASIVE REMOVAL TECHNIQUES IS NOT ALLOWED. REFER TO LIGO-E0900364
 - 8. ALL PARTS SHALL BE MANUFACTURED IN ACCORDANCE WITH LIGO SPECIFICATION E0900364.
 - 11. ALL MATERIAL IS TO BE VIRGIN MATERIAL (i.e. NO WELD REPAIRS, PLUGS OR RECYCLED MATERIAL). NO REPAIRS SHALL BE MADE UNLESS APPROVED IN ADVANCE, AND IN WRITING, BY LIGO LABORATORY. REFER TO LIGO-E0900364.

REV.	DATE	DCN #	DRAWING TREE #
v1	19 JUL 2011	E1100351	-
-	-	-	-
-	-	-	-



3X ϕ .20 ∇ .75
 1/4-20 UNC - 2B ∇ .50



NOTES AND TOLERANCES: (UNLESS OTHERWISE SPECIFIED)				LIGO CALIFORNIA INSTITUTE OF TECHNOLOGY MASSACHUSETTS INSTITUTE OF TECHNOLOGY		PART NAME	
DIMENSIONS ARE IN INCHES				ADVANCED LIGO		aLIGO TMS TELE ALIGNMENT MIRROR MOUNT, 6"	
TOLERANCES: .XX ± .02 .XXX ± .010				SUB-SYSTEM AOS		DESIGNER J. TERRAZAS 19 JUL 2011	
ANGULAR ± 1.0°				MATERIAL 6061-T6 Al		DRAFTER J. TERRAZAS 19 JUL 2011	
FINISH μinch				NEXT ASSY TOOLING		CHECKER	
						APPROVAL	
						SCALE: 1:2	
						PROJECTION:	
						SHEET 1 OF 1	