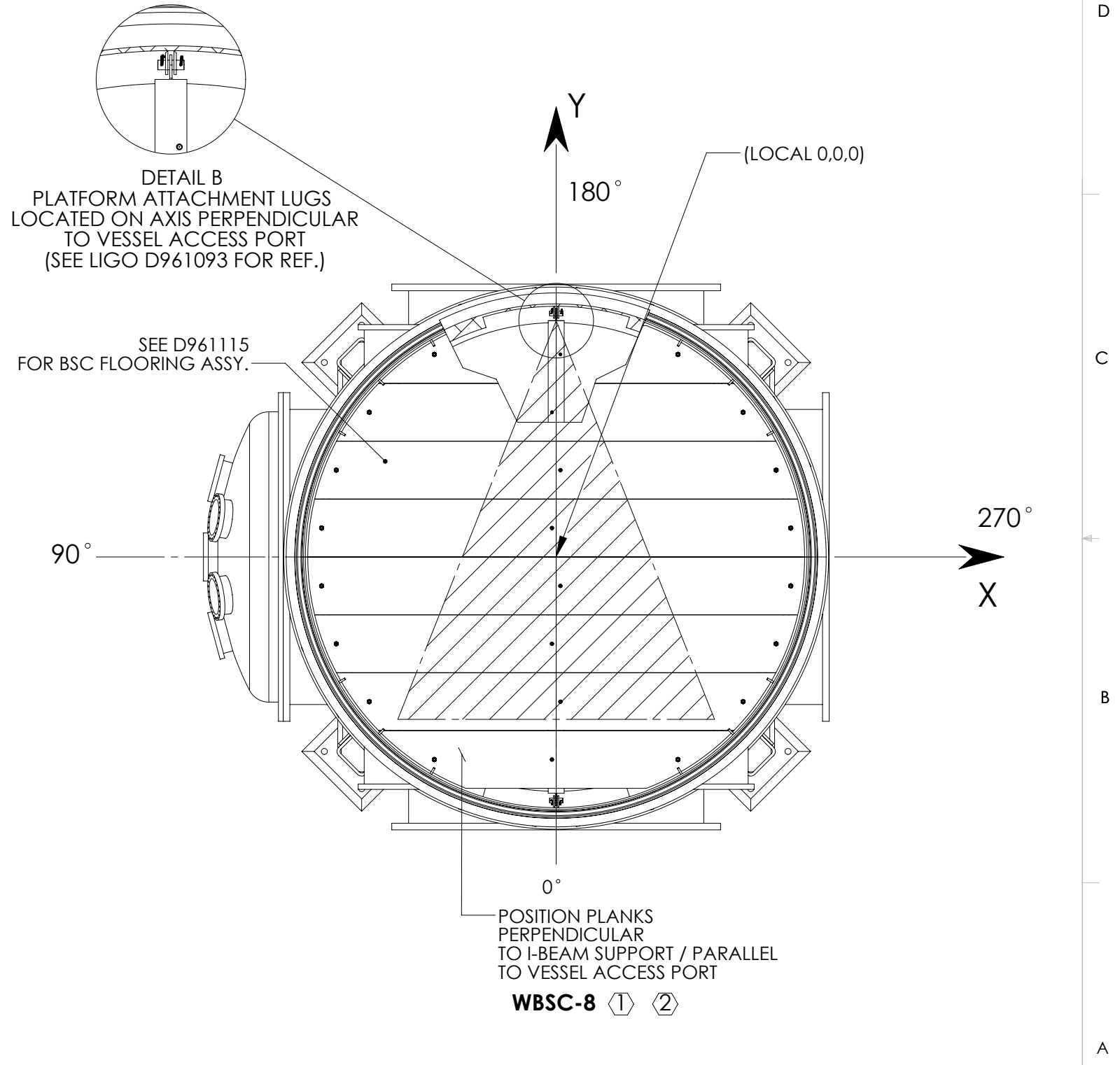
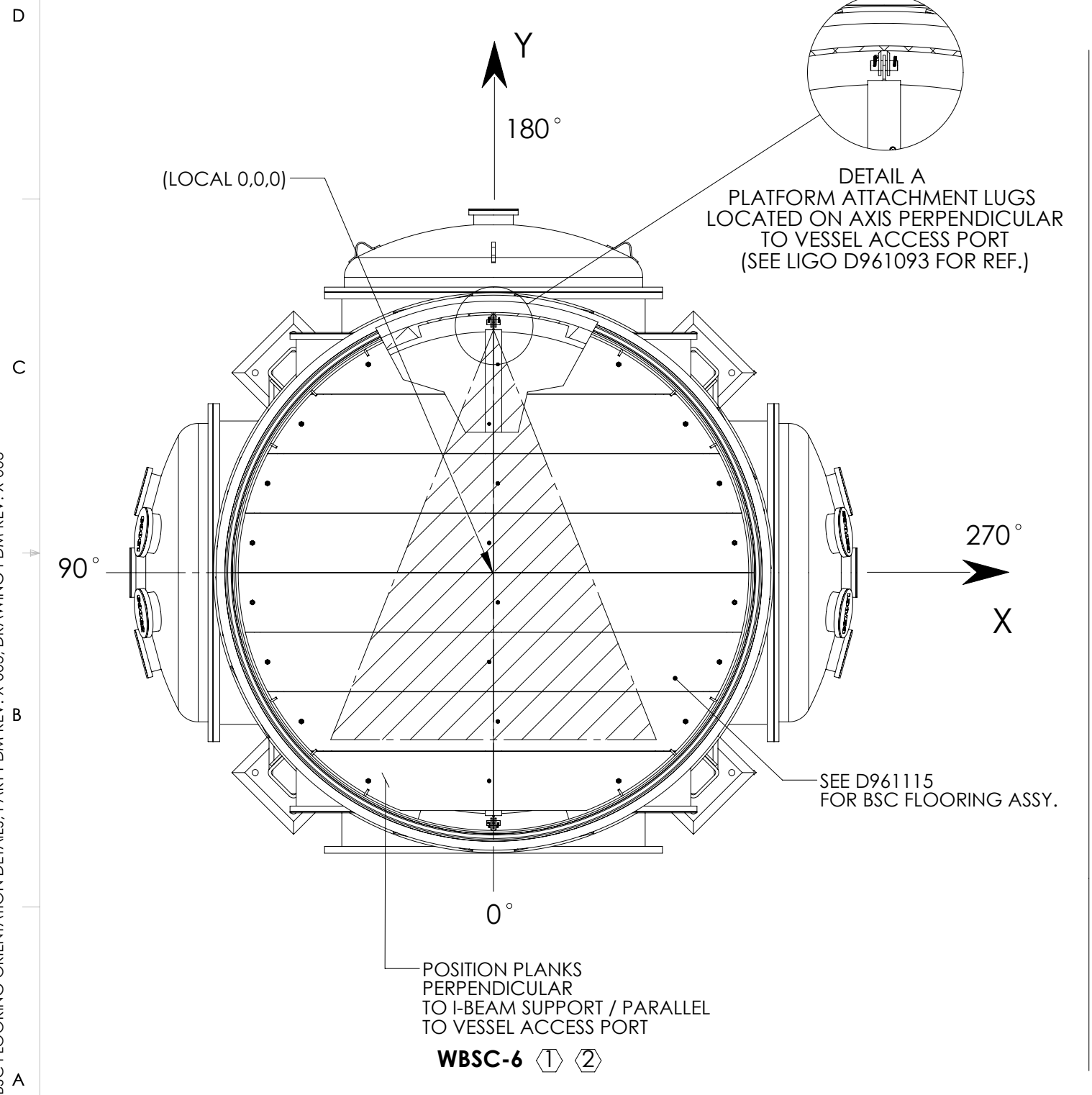


8 7 6 5 4 3 2 1

① BSC ORIENTATION REFERENCE: THE BASE OF THE TRIANGLE SPANS THE SUPPORT TUBES; THE REST OF THE TRIANGLE FOLLOWS THE SHAPE OF THE KEEL PLATE
SEE LIGO G1000125 FOR REFERENCE.

REV.	DATE	DCN #	DRAWING TREE #
v1	18 JUL 2011	-	-
v4	23 AUG 2012	E1100675-x0	-
-	-	-	-



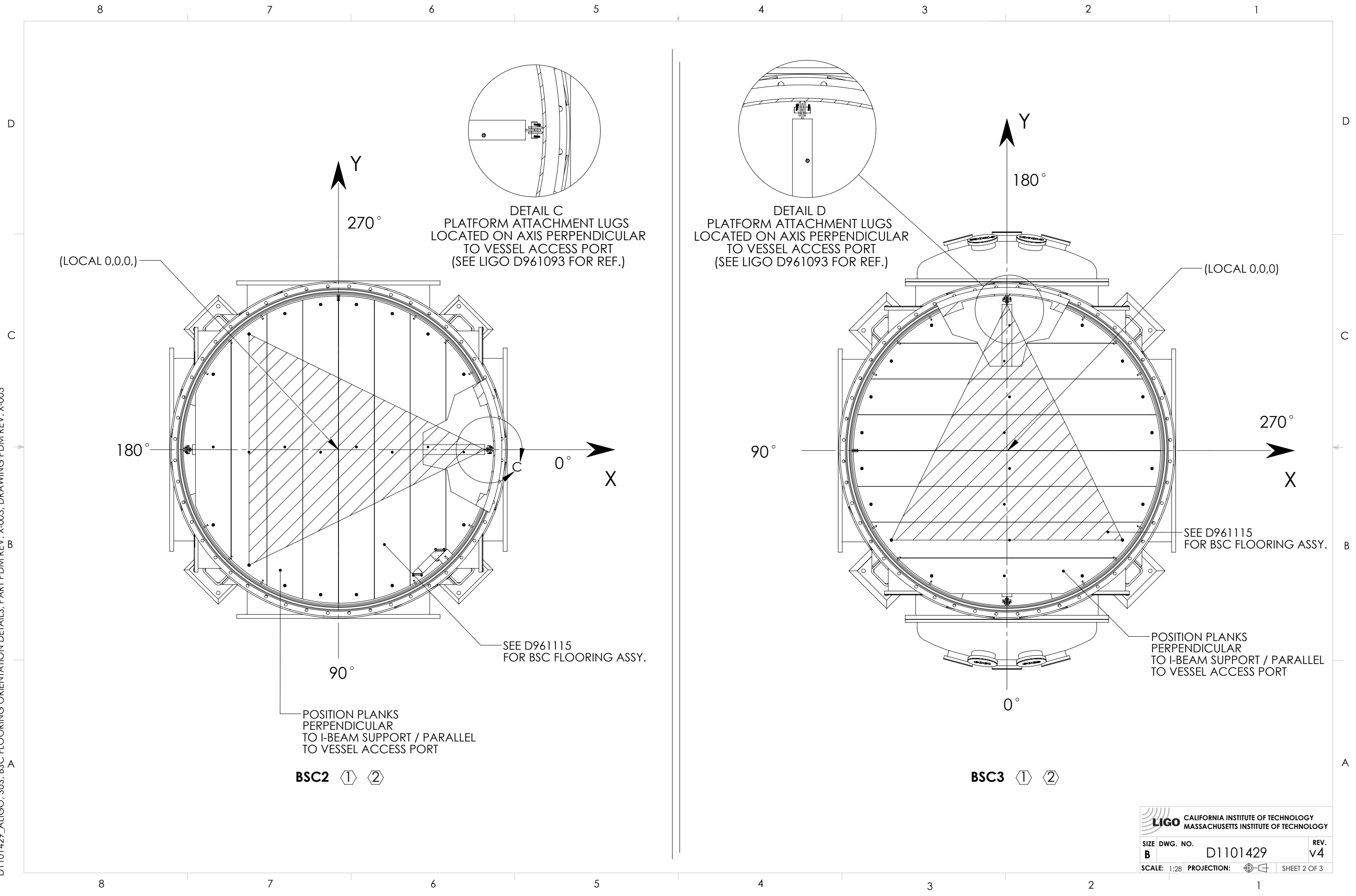
D1101429_ALIGO_SUS, BSC FLOORING ORIENTATION DETAILS, PART PDM REV: X-003, DRAWING PDM REV: X-003

② QUAD SLEEVE REMOVAL (IN-CHAMBER REPAIRS):
FLOORING MUST BE REMOVED PRIOR TO QUAD SLEEVE REMOVAL.
(DISCUSS EXACT FLOORING PLANKS WITH SUS TEAM)

NOTES AND TOLERANCES: (UNLESS OTHERWISE SPECIFIED)				LIGO CALIFORNIA INSTITUTE OF TECHNOLOGY MASSACHUSETTS INSTITUTE OF TECHNOLOGY		PART NAME	
MATERIAL	N/A	FINISH	N/A μinch	SYSTEM	ADVANCED LIGO	SUB-SYSTEM	SYS
				NEXT ASSY	N/A	DESIGNER	E.SANCHEZ
						DRAFTER	E.SANCHEZ
						CHECKER	SEE DCC
						APPROVAL	SEE DCC
						SIZE	DWG. NO.
						B	D1101429
						SCALE	1:28
						PROJECTION	1st Angle
							SHEET 1 OF 3

8 7 6 5 4 3 2 1

D1101429_ALIGO, SUS, BSC FLOORING ORIENTATION DETAILS, PART PDM REV: X-003, DRAWING PDM REV: X-003



(LOCAL 0,0,0,)

Y
270°

DETAIL C
PLATFORM ATTACHMENT LUGS
LOCATED ON AXIS PERPENDICULAR
TO VESSEL ACCESS PORT
(SEE LIGO D961093 FOR REF.)

180°

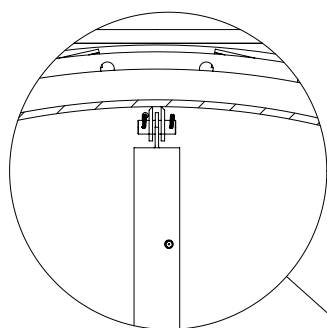
X
0°

SEE D961115
FOR BSC FLOORING ASSY.

90°

POSITION PLANKS
PERPENDICULAR
TO I-BEAM SUPPORT / PARALLEL
TO VESSEL ACCESS PORT

BSC2 ① ②



DETAIL D
PLATFORM ATTACHMENT LUGS
LOCATED ON AXIS PERPENDICULAR
TO VESSEL ACCESS PORT
(SEE LIGO D961093 FOR REF.)

Y

180°

(LOCAL 0,0,0,)

90°

270°

X

SEE D961115
FOR BSC FLOORING ASSY.

POSITION PLANKS
PERPENDICULAR
TO I-BEAM SUPPORT / PARALLEL
TO VESSEL ACCESS PORT

0°

BSC3 ① ②

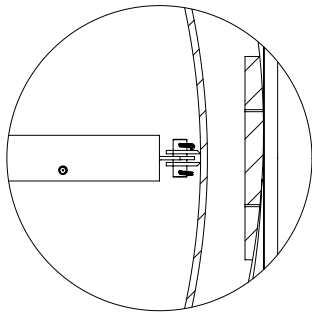
LIGO CALIFORNIA INSTITUTE OF TECHNOLOGY
MASSACHUSETTS INSTITUTE OF TECHNOLOGY

SIZE	DWG. NO.	REV.
B	D1101429	v4
SCALE: 1:28	PROJECTION:	SHEET 2 OF 3

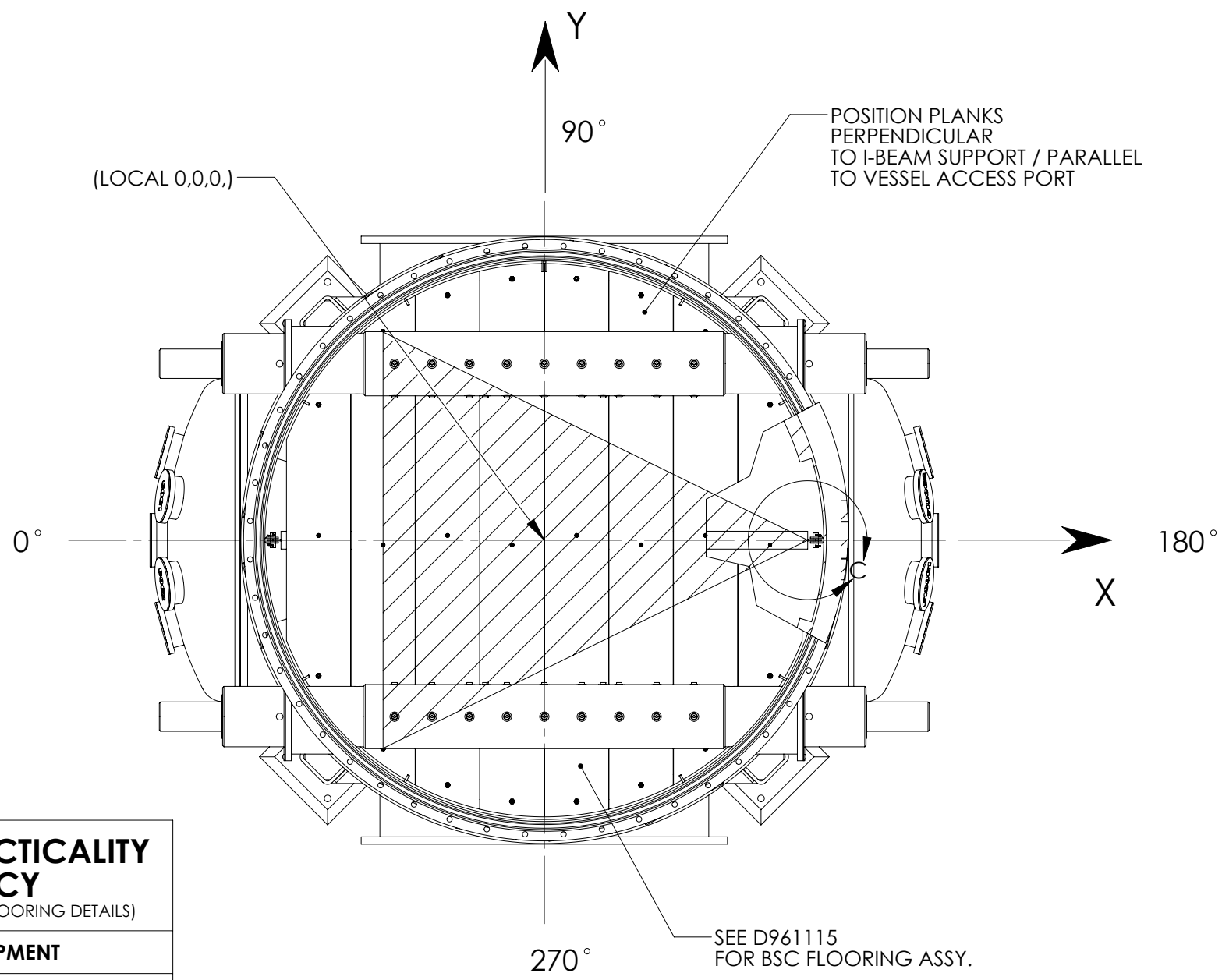
8 7 6 5 4 3 2 1

D
C
B
A

D
C
B
A



DETAIL C
 PLATFORM ATTACHMENT LUGS
 LOCATED ON AXIS PERPENDICULAR
 TO VESSEL ACCESS PORT
 (SEE LIGO D961093 FOR REF.)



**BSC CHAMBERS OMITTED FOR PRACTICALITY
 AND TO AVOID REDUNDANCY**

(SEE DOCUMENTS LISTED UNDER 'VACUUM EQUIPMENT' FOR BSC FLOORING DETAILS)

NAME	TOP LEVEL ASSY.	VACUUM EQUIPMENT
BSC5 L1	D0900506	D0900507
BSC5 H2	D0900502	D0900503
BSC4 L1	D0900471	D0900473
BSC9 H1	D0901150	D0901151
BSC10 H1	D0901154	D0901155
BSC4 H2	D0900481	D0900482
BSC7 H2	D0900405	D0900406

BSC1 ① ②

D1101429_ALIGO, SUS, BSC FLOORING ORIENTATION DETAILS, PART PDM REV: X-003, DRAWING PDM REV: X-003

8 7 6 5 4 3 2 1

LIGO CALIFORNIA INSTITUTE OF TECHNOLOGY
 MASSACHUSETTS INSTITUTE OF TECHNOLOGY

SIZE DWG. NO. **B** D1101429 REV. **v4**

SCALE: 1:28 PROJECTION: SHEET 3 OF 3