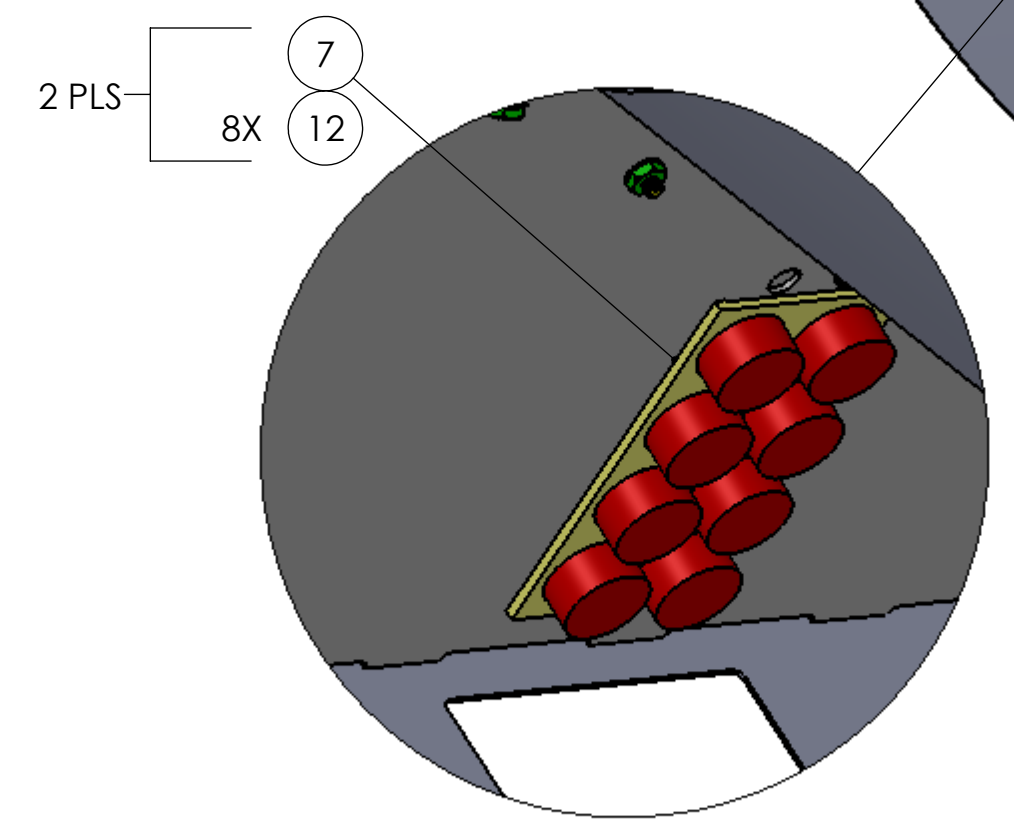
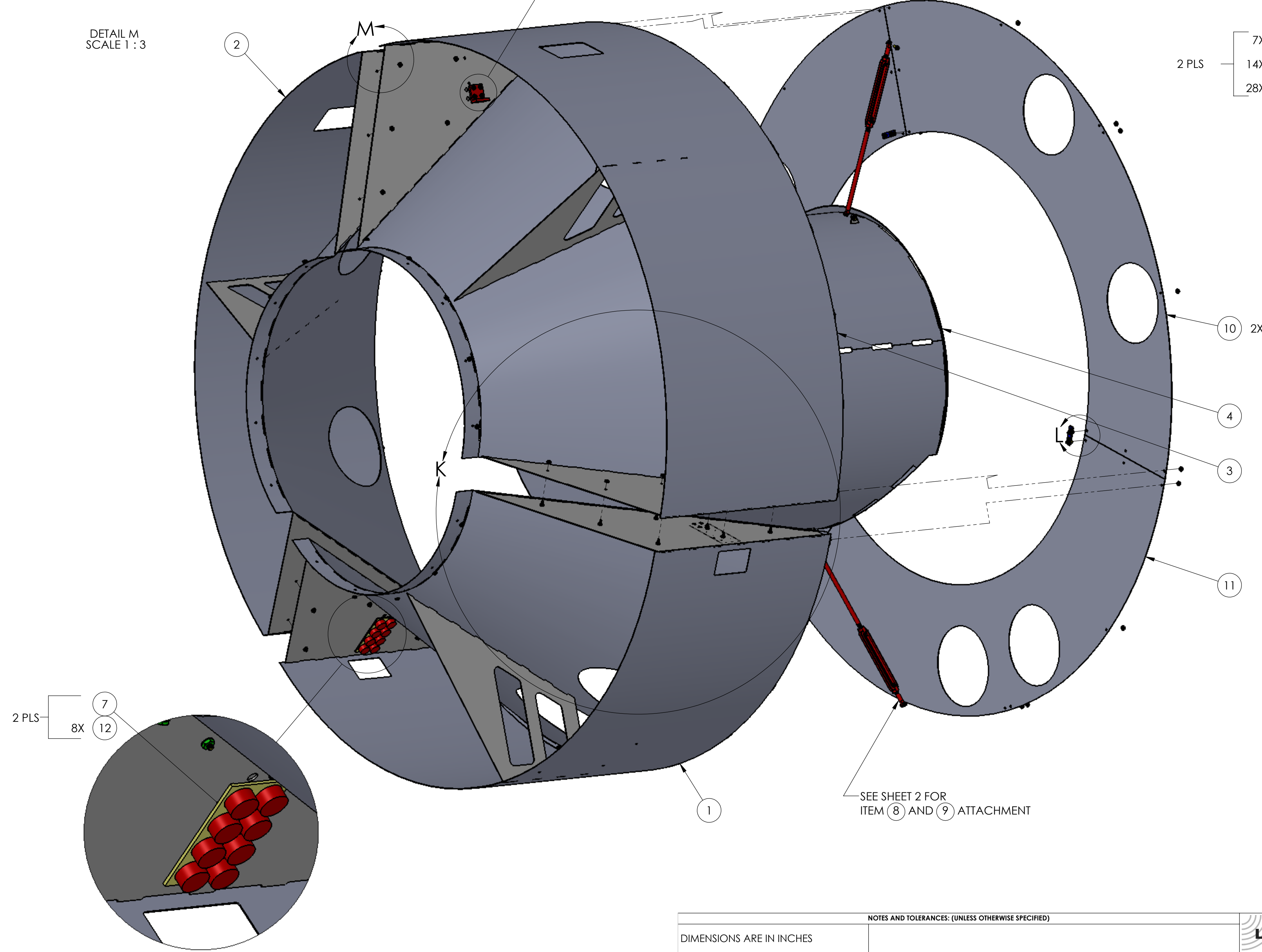
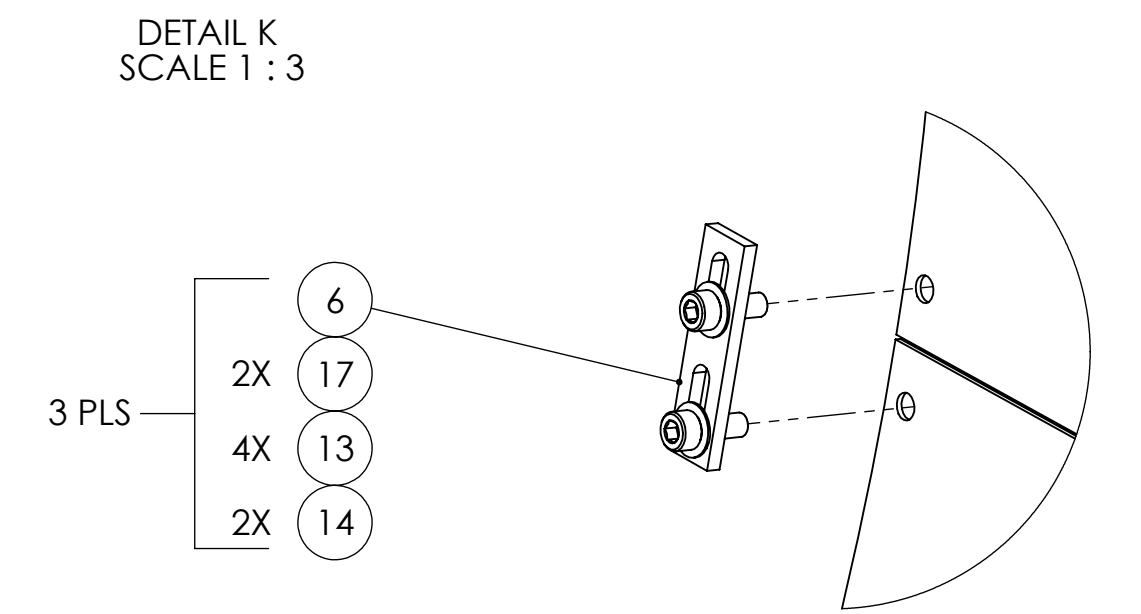
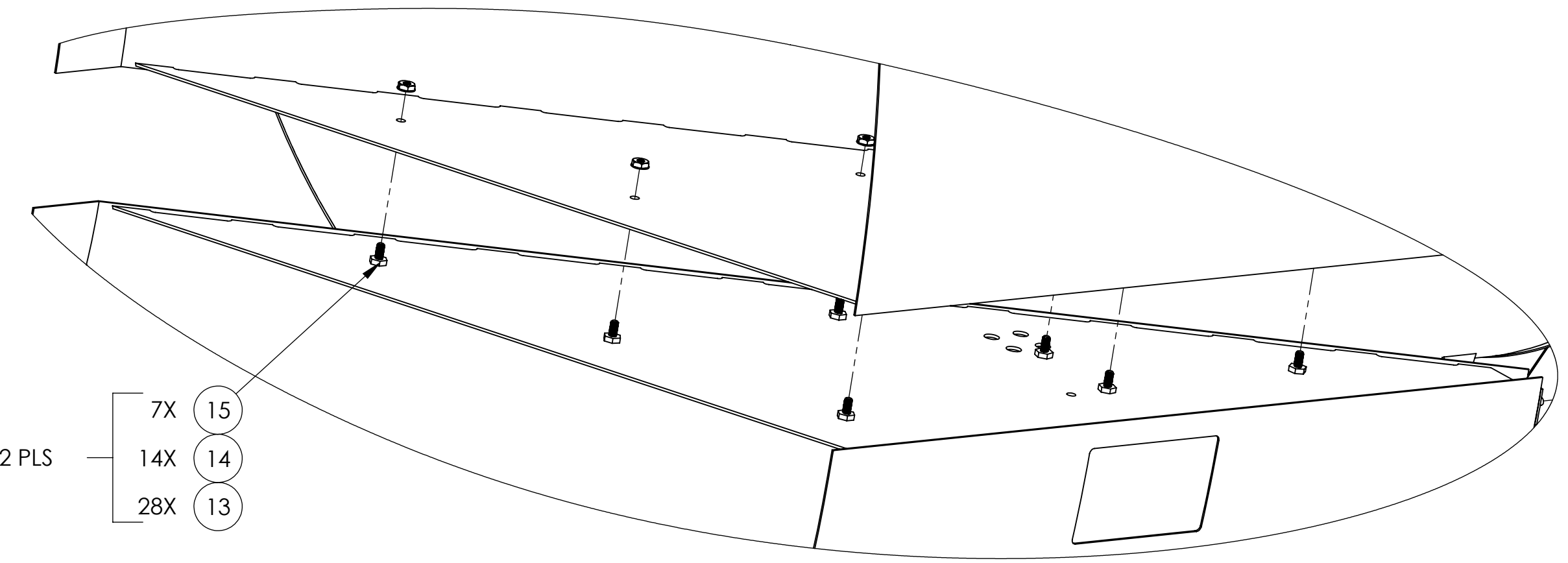
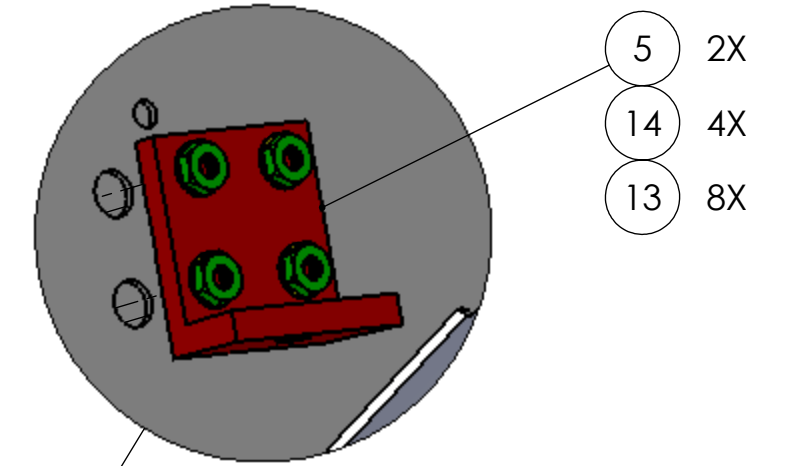
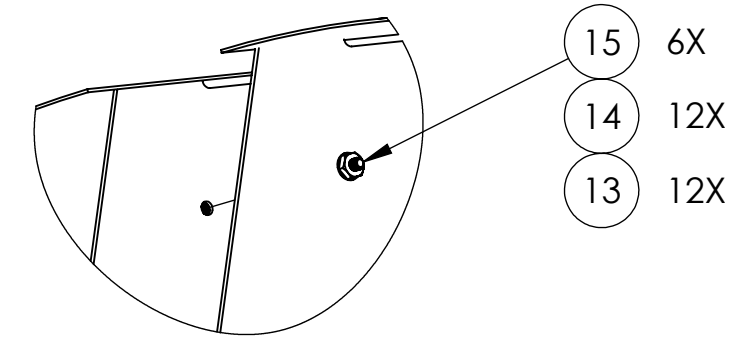


NOTES CONTINUED:
 1. APPROXIMATELY WEIGHT = 255. BLS
 2. TORQUE SHCS TO VALUES SPECIFIED IN LIGO T1 100066.

REV.	DATE	DCN #	DRAWING TREE #
v1	27 AUG 2011	E1000360-v2	-
v2	21 OCT 2011	E1000360-v3	-
-	-	-	-



ITEM NO.	PART NUMBER	DESCRIPTION	MATERIAL	QTY	TOTAL
18	BU-1016-N	BUTTON HEAD SOCKET CAP SCREW, #10-32 x 1" L	18-8 SSSL	4	0
17	C-1008-N	SCREW SOCKET HEAD CAP, 10-32 x 1/2" L	18-8 SSSL	12	0
16	C-1006-N	SCREW SOCKET HEAD CAP, 10-32 x 3/8" L	18-8 SSSL	33	0
15	95316A400	MALE-MALE THREADED ADAPTER 10-32	18-8 SSSL	20	0
14	N-1032-A	HEX NUT, 10-32 THRD SIZE	Ag-PLATED 300 SSSL	89	0
13	WF-10	FLAT WASHER, #10 SCREW SIZE	18-8 SSSL	138	0
12	N35P1000500HT	BUNTING MAGNETIC-NEODYMIUM 1.00D X .50H	NEO 35	16	0
11	D1101501	LOWER FACE PLATE, ITM XY	18 GAUGE 304 SSSL	1	0
10	D1101503	UPPER SIDE FACE PLATE, ITM XY	18 GAUGE 304 SSSL	2	0
9	D1100865-01	TURN BUCKLE ASSY_LONG LENGTH	N/A	1	0
8	D1100865-02	TURN BUCKLE ASSY_SHORT LENGTH	N/A	2	0
7	D1100820	LOWER MAGNET PLATE	430F SSSL	2	0
6	D1002641	HALF FACE BRACKET	6061-T6 Al	3	0
5	D1000111	MANIFOLD CRYO MUSIC WIRE ADJ BRKT	304, 316 OR 302 SSSL	2	0
4	D1001348	MANIFOLD-CRYO BAFFLE CYLINDER-SCRAPER ASSEMBLY	N/A	1	0
3	D0902656	MANIFOLD-CRYO BAFFLE SEGMENT SUBASSEMBLY WELDMENT, ITM XY, LEFT	N/A	1	0
2	D0902654	MANIFOLD CRYO BAFFLE SEGMENT SUBASSEMBLY WELDMENT, ITM XY, RIGHT	N/A	1	0
1	D0902655	MANIFOLD-CRYO BAFFLE SEGMENT SUBASSEMBLY WELDMENT, ITM XY, BOTTOM	N/A	1	0

NOTES AND TOLERANCES: (UNLESS OTHERWISE SPECIFIED)

DIMENSIONS ARE IN INCHES
 TOLERANCES:
 .XX ± .06
 .XXX ± .010
 ANGULAR ± 1.0°

MATERIAL: N/A
 FINISH: N/A μinch

ADVANCED LIGO
 AOS
 D0902617

CALIFORNIA INSTITUTE OF TECHNOLOGY
 MASSACHUSETTS INSTITUTE OF TECHNOLOGY

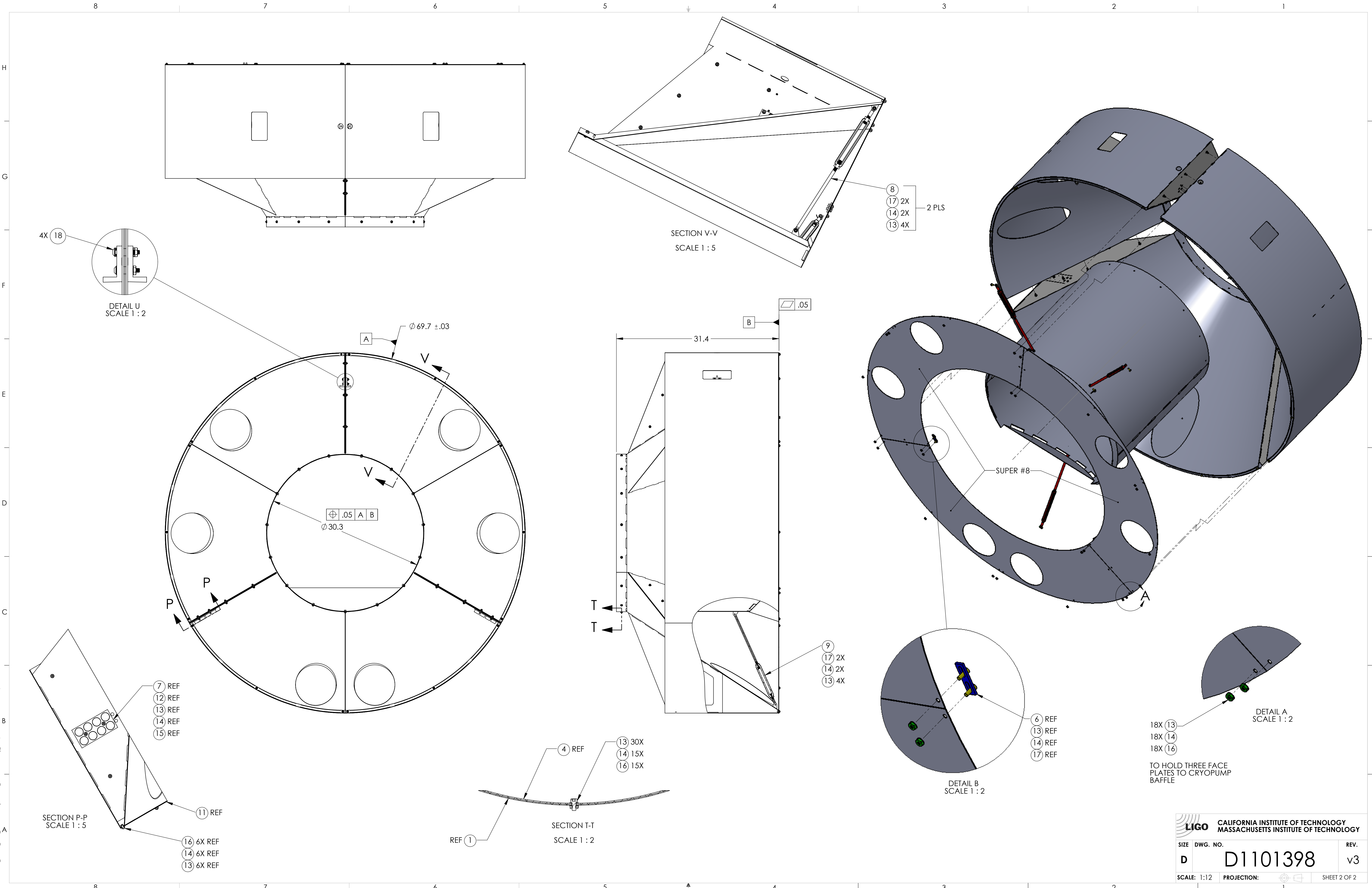
PART NAME: WELDMENT ASSY_3 FP, ITM

DESIGNER: H. KELMAN
 DRAFTER: TG. NGUYEN
 CHECKER: M. SMITH
 APPROVAL: D. COYNE

SIZE: D
 DWG. NO.: D1101398
 SCALE: 1:8
 PROJECTION: [Symbol]

REV. v3
 SHEET 1 OF 2

D:\101398.dwg_AOS_Manifold-Cryo Baffle-Weldment Assy_3 FP, PART FDM REV. X:142, DRAWING FDM REV. X:021



D1101398.dwg; 003; Morfield/Cryo Baffle; Weldment Assy; 3 PF; PART FROM REV; X:143; DRAWING FROM REV; X:021