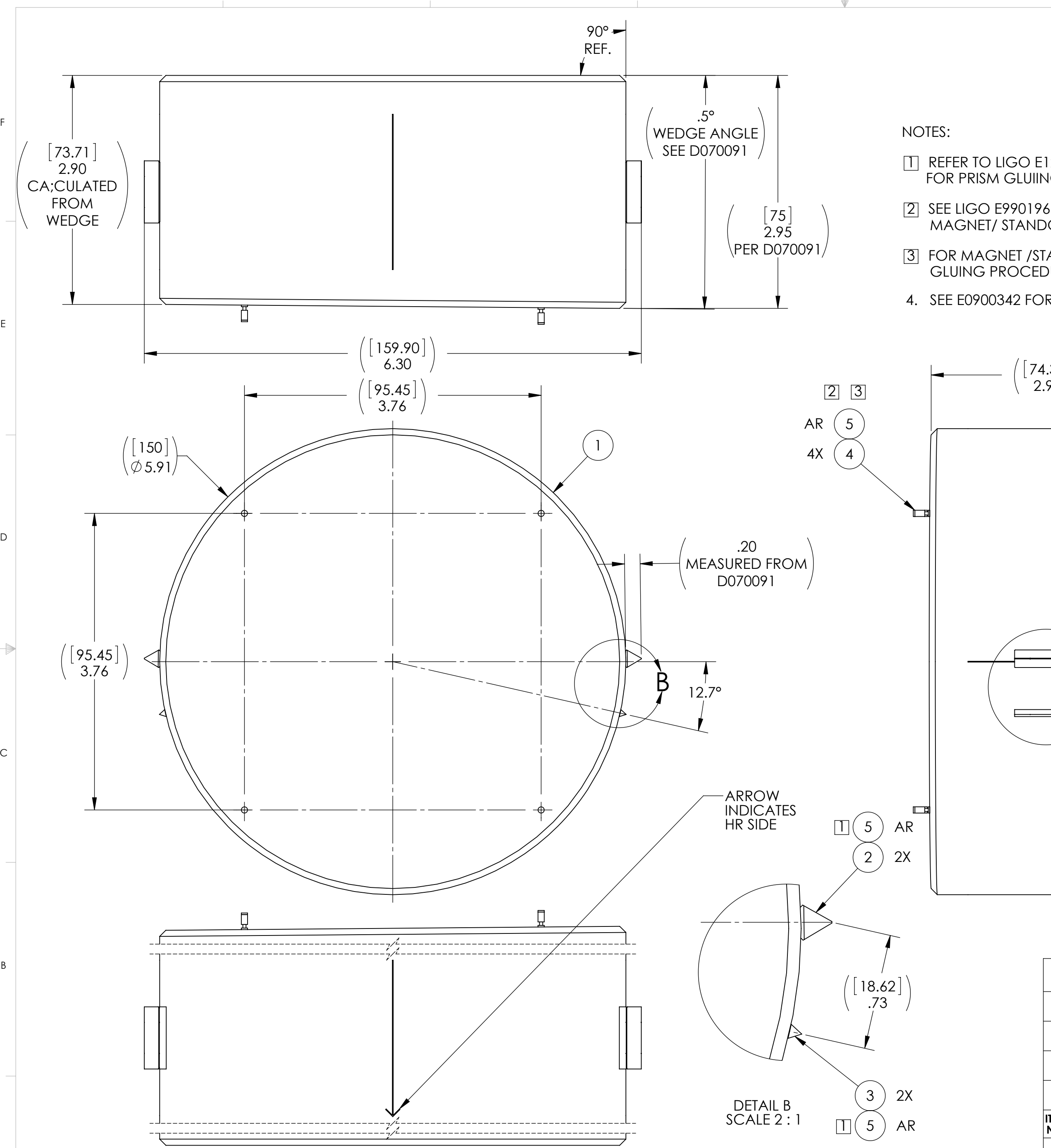
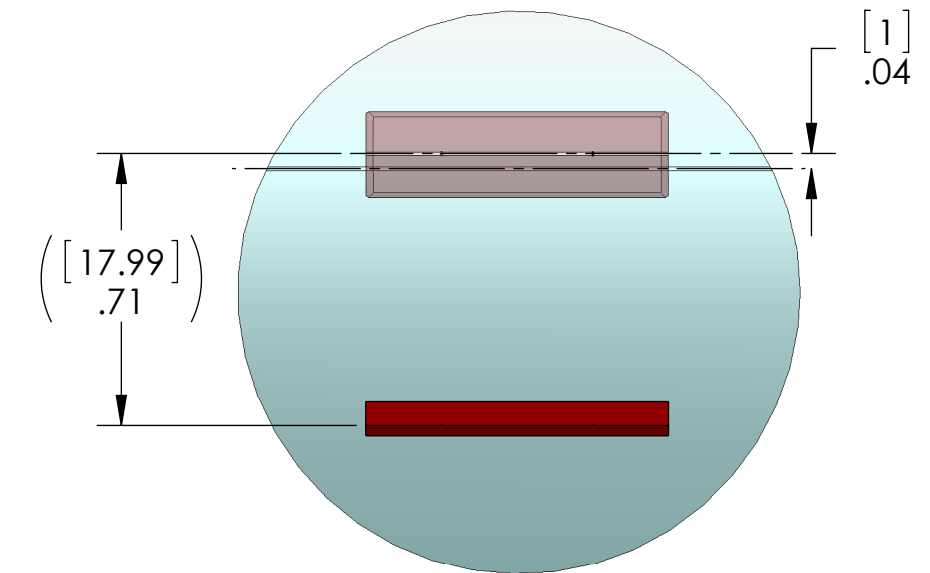
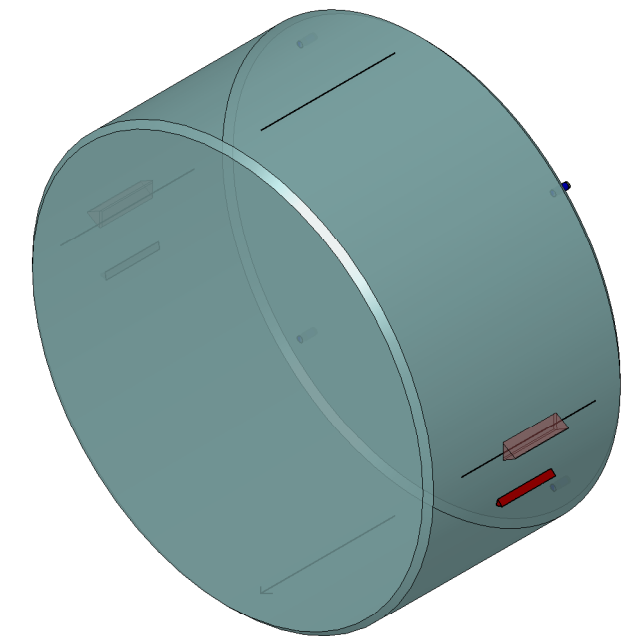


REV.	DATE	DCN #	DRAWING TREE #
v2	12 DEC 2013	-	-
v3	08 APR 2014	E1300890-x0	-
-	-	-	-



- NOTES:
- REFER TO LIGO E1200211 FOR PRISM GLUING PROCEDURE
 - SEE LIGO E990196 FOR MAGNET/ STANDOFF ASSEMBLY PROCEDURE
 - FOR MAGNET /STANDOFF TO OPTIC GLUING PROCEDURE, SEE E030518
 - SEE E0900342 FOR OPTIC ORIENTATIONS.



ITEM NO.	PART NUMBER	DESCRIPTION	MATERIAL	QTY.
5	EP30-2 MASTERBOND OR EQ.	UHV - COMPATIBLE ADHESIVE	N/A	A/R
4	D0902432	MAGNET/STANDOFF ASSEMBLY, HSTS TEST MASS	N/A	4
3	D0901278	HSTS SECONDARY METAL PRISM	304, 316 OR 302 SSTL	2
2	D0810033	PRISM BREAKOFF	SAPPHIRE	2
1	D070091	gLIGO INPUT MODE CLEANER FLAT MIRROR SUBSTRATE	FUSED SILICA	1

PARTS LIST

NOTES AND TOLERANCES: (UNLESS OTHERWISE SPECIFIED)

LIGO CALIFORNIA INSTITUTE OF TECHNOLOGY MASSACHUSETTS INSTITUTE OF TECHNOLOGY

SYSTEM: ADVANCED LIGO SUB-SYSTEM: SUS

MATERIAL: N/A FINISH: N/A μinch

NEXT ASSY: TBD

PART NAME: India1-MC1 Optic Assembly

DESIGNER: B. MOORE 19 DEC 2011 SIZE: c DWG. NO. D1101383 REV. v3

DRAFTER: E.SANCHEZ 12 DEC 2013

CHECKER: SEE DCC SEE DCC

APPROVAL: SEE DCC SEE CC SCALE: 1:1 PROJECTION: SHEET 1 OF 1