

NOTES CONTINUED:

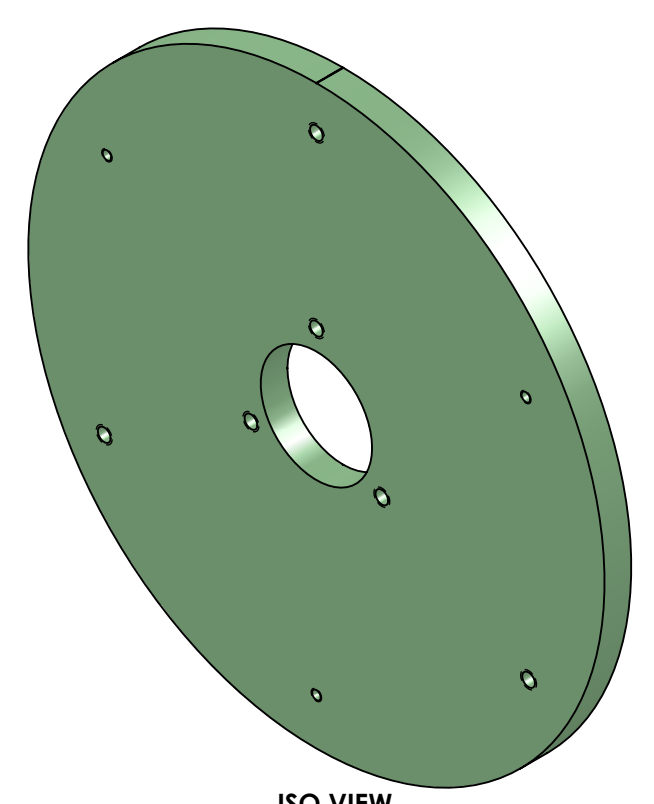
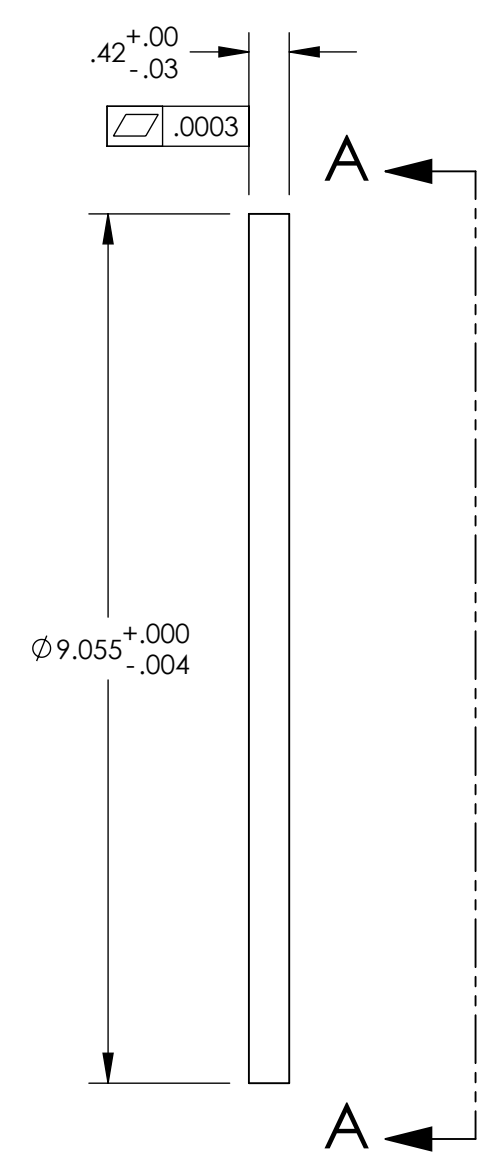
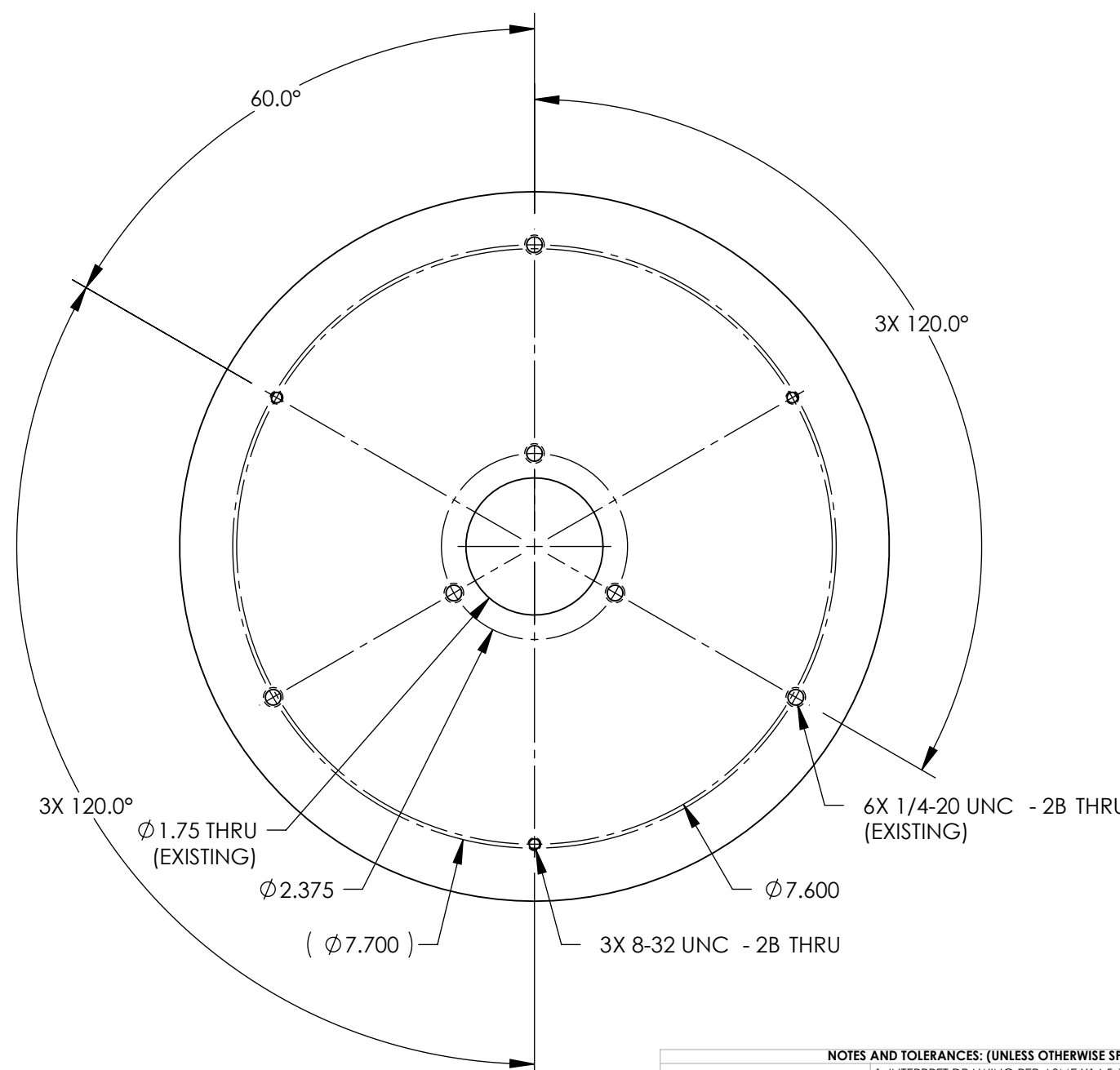
⑤ SCRIBE, ENGRAVE (A VIBRATORY TOOL MAY BE USED), LASER MARK OR MECHANICALLY STAMP (NO INKS OR DYES) DRAWING PART NUMBER, REVISION (AND VARIANT OR "TYPE" IF APPLICABLE) ON NOTED SURFACE OF PART FOLLOWED ON THE NEXT LINE WITH A THREE DIGIT SERIAL NUMBER. SERIAL NUMBERS START AT 001 FOR THE FIRST ARTICLE AND PROCEED CONSECUTIVELY. USE MINIMUM 0.12" HIGH CHARACTERS, UNLESS THE SIZE OF THE PART DICTATES SMALLER CHARACTERS. EXAMPLE: DXXXXXXXX-VY, TYPE-XX, S/N XXX

6. APPROXIMATE WEIGHT = 2.62 LB [1.19 KG].

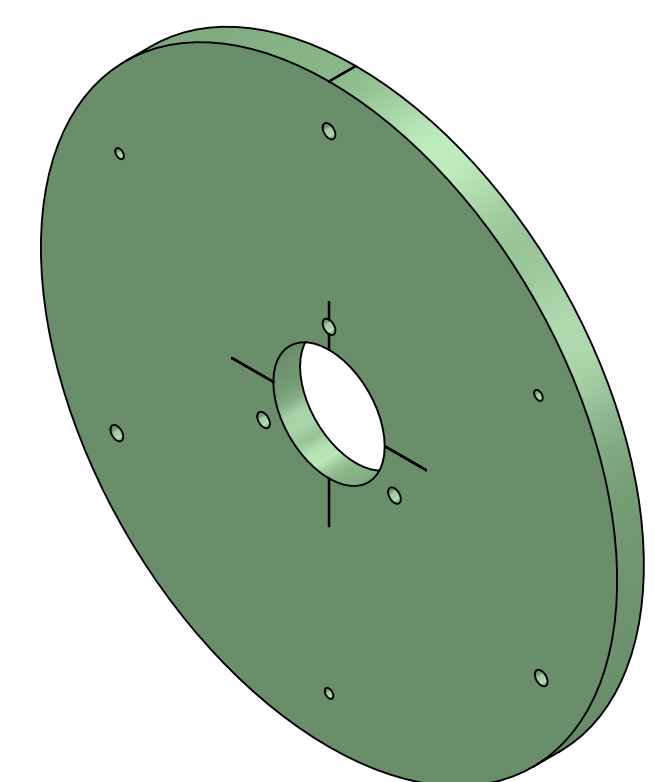
7. MACHINE ALL SURFACES.

⑧ MATERIAL: MAKE FROM LIGO-D1100370-v1 (TYPE 300 CAST ALUMINUM TOOL PLATE, BLANCHARD GROUND.)

REV.	DATE	DCN #	DRAWING TREE #
v1	19 JUL 2011	E1100351	-
-	-	-	-
-	-	-	-



ISO VIEW



BACK ISO VIEW

NOTES AND TOLERANCES: (UNLESS OTHERWISE SPECIFIED)				LIGO CALIFORNIA INSTITUTE OF TECHNOLOGY MASSACHUSETTS INSTITUTE OF TECHNOLOGY		PART NAME	
DIMENSIONS ARE IN INCHES				SYSTEM		SUB-SYSTEM	
TOLERANCES: .XX $\pm .01$.XXX $\pm .005$				ADVANCED LIGO		AOS	
ANGULAR $\pm 1.0^\circ$				NEXT ASSY		DESIGNER	
MATERIAL				FINISH		DRAPER	
⑧				63 μ inch Ra		K. MAILAND 08 JUL 2011	
				D1101361		C. CONLEY 19 JUL 2011	
						SIZE DWG. NO.	
						B D1101342	
						REV.	
						v1	
						SCALE: NONE PROJECTION: SHEET 1 OF 2	

D1101342 dLIGO TMS TOOLING PRIMARY MIRROR PLATE, PART PDM REV: X-018, DRAWING PDM REV: X-027

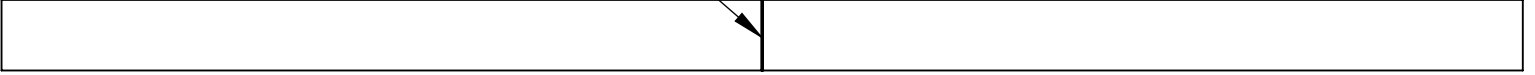
D1101342 dLIGO TMS TOOLING PRIMARY MIRROR PLATE, PART PDM REV: X-018, DRAWING PDM REV: X-027

8 7 6 5 4 3 2 1

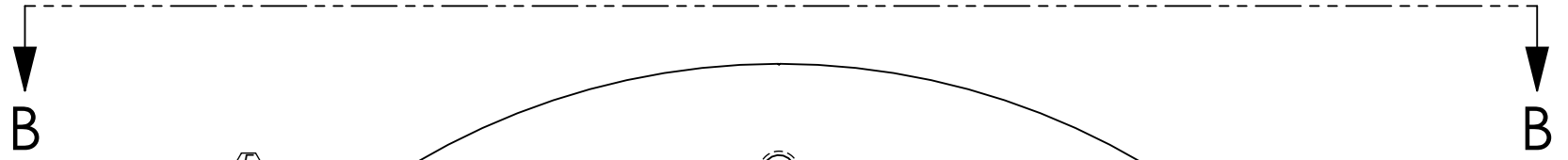
D
C
B
A

D
C
B
A

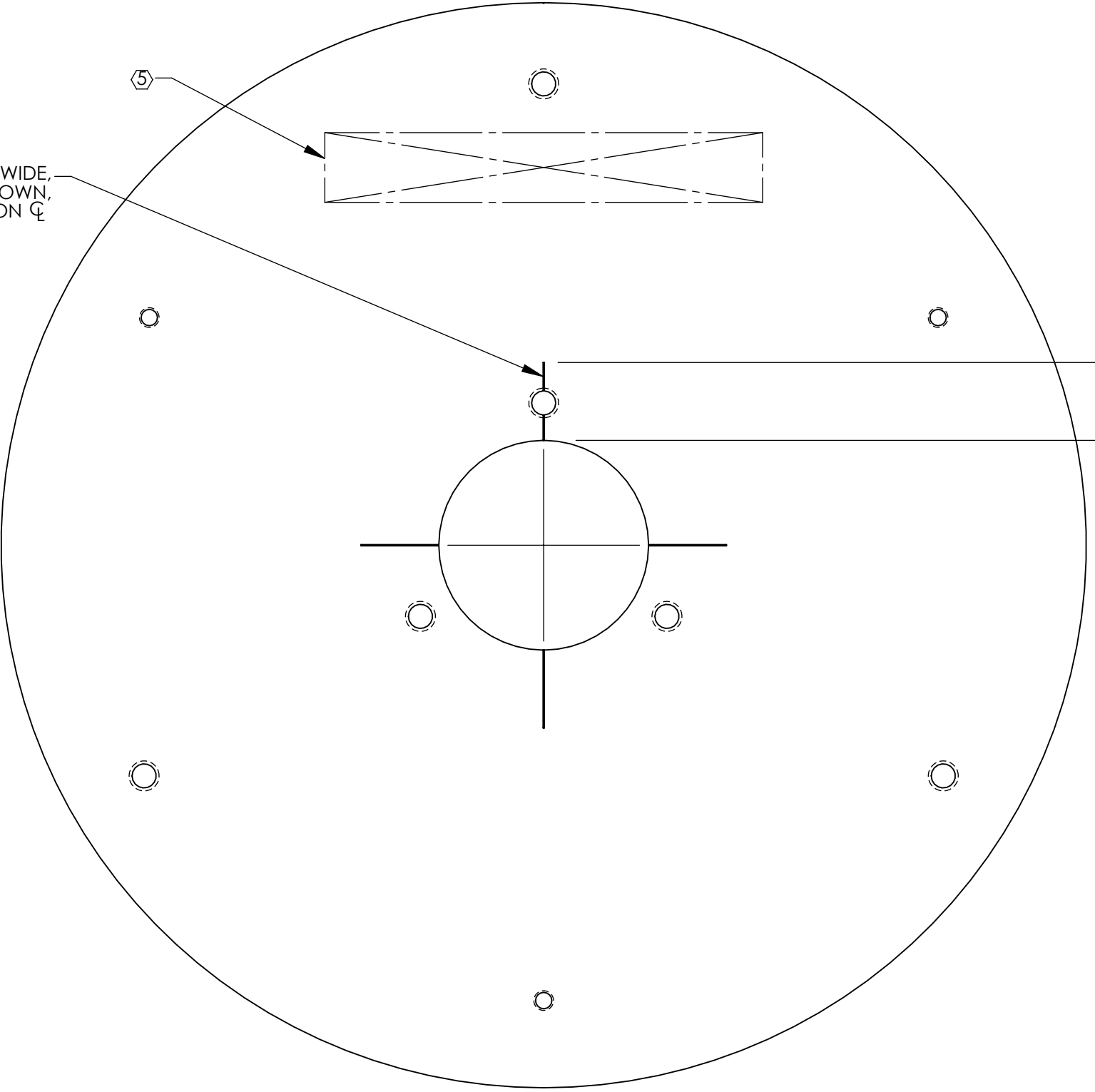
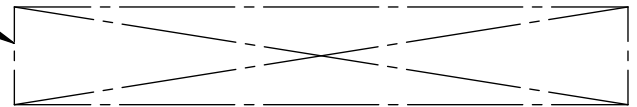
SCRIBE LINE, .010 WIDE,
ACROSS O.D. AS SHOWN,
ONE PLACE, ON ϕ



VIEW B-B



4X SCRIBE LINE, .010 WIDE,
FROM HOLE EDGE AS SHOWN,
ON ϕ



4X .70
.60
(EXISTING)

VIEW A-A

8 7 6 5 4 3 2 1

LIGO CALIFORNIA INSTITUTE OF TECHNOLOGY
MASSACHUSETTS INSTITUTE OF TECHNOLOGY

SIZE	DWG. NO.	REV.
B	D1101342	v1
SCALE: NONE		PROJECTION:
		SHEET 2 OF 2