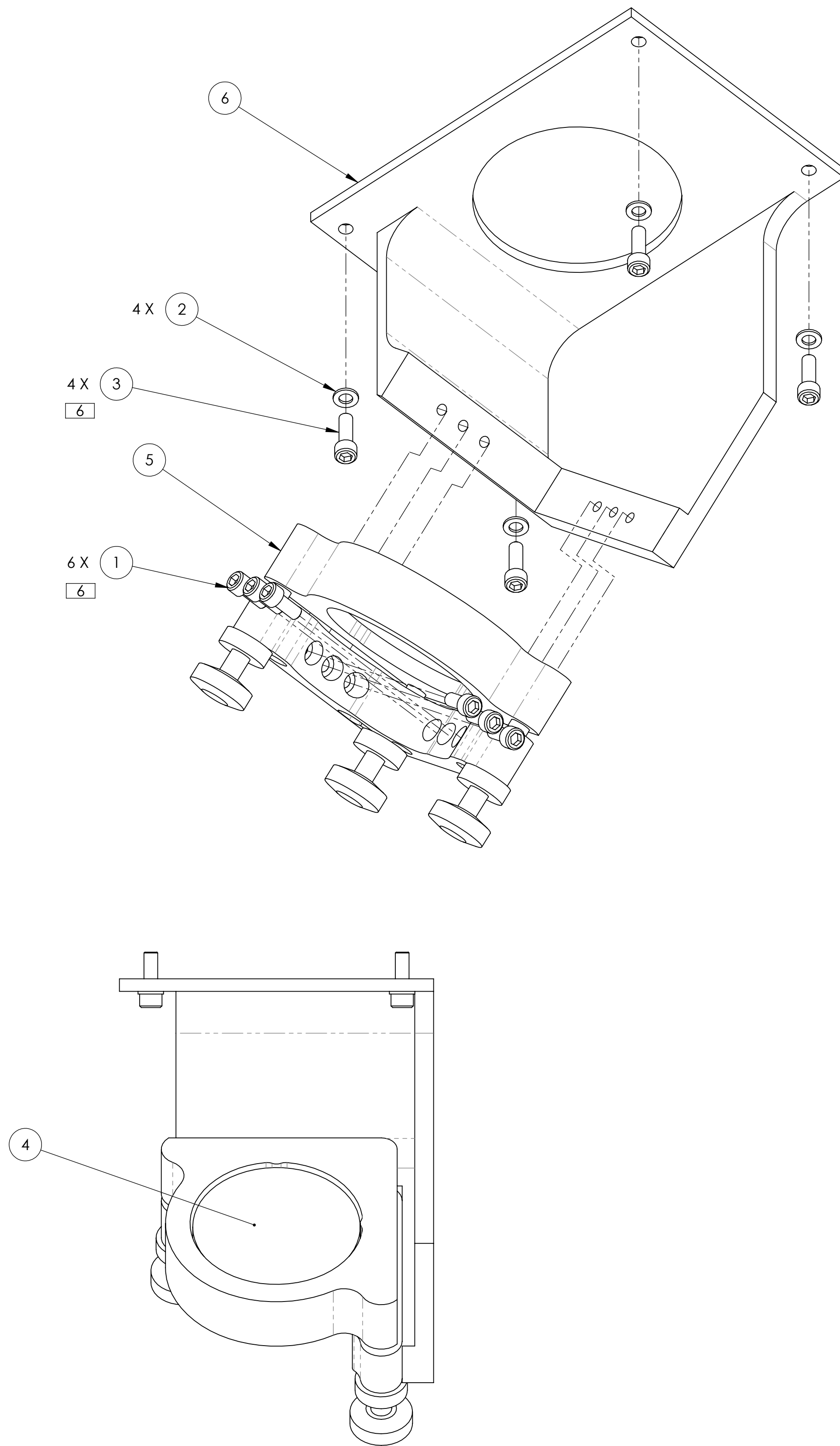
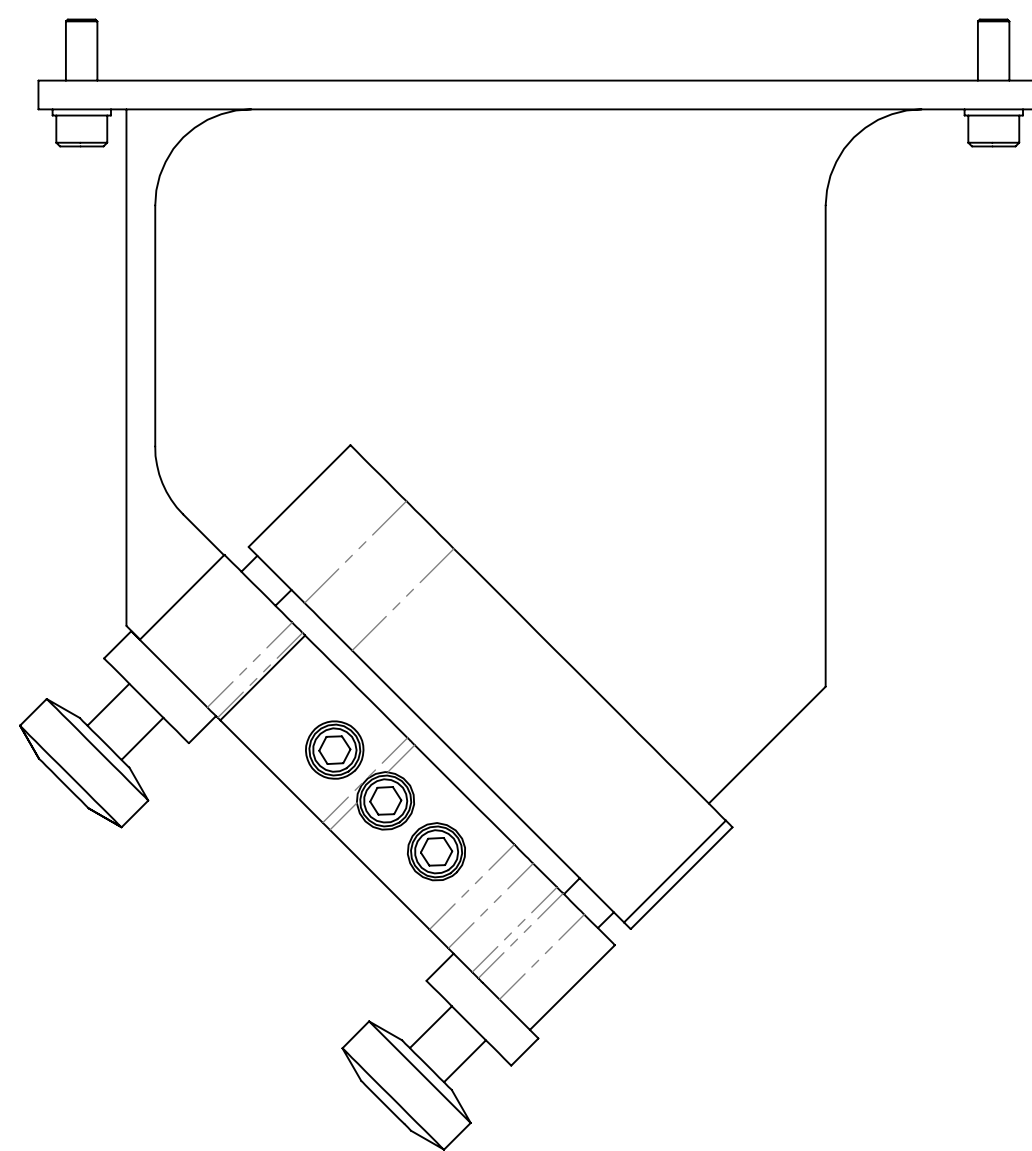
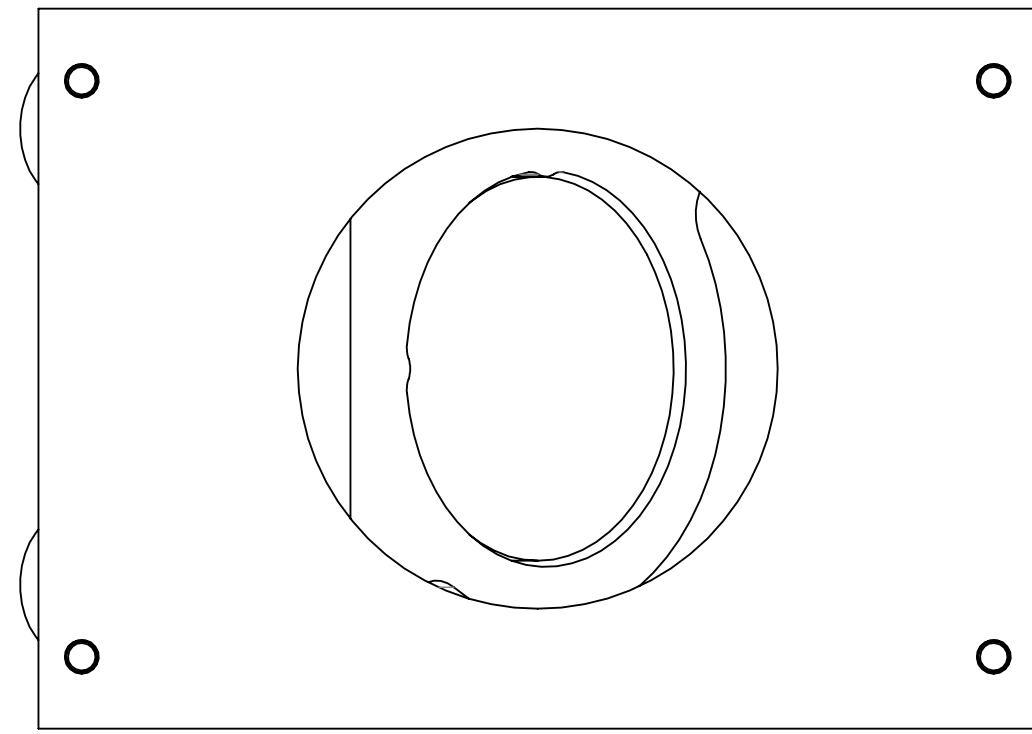
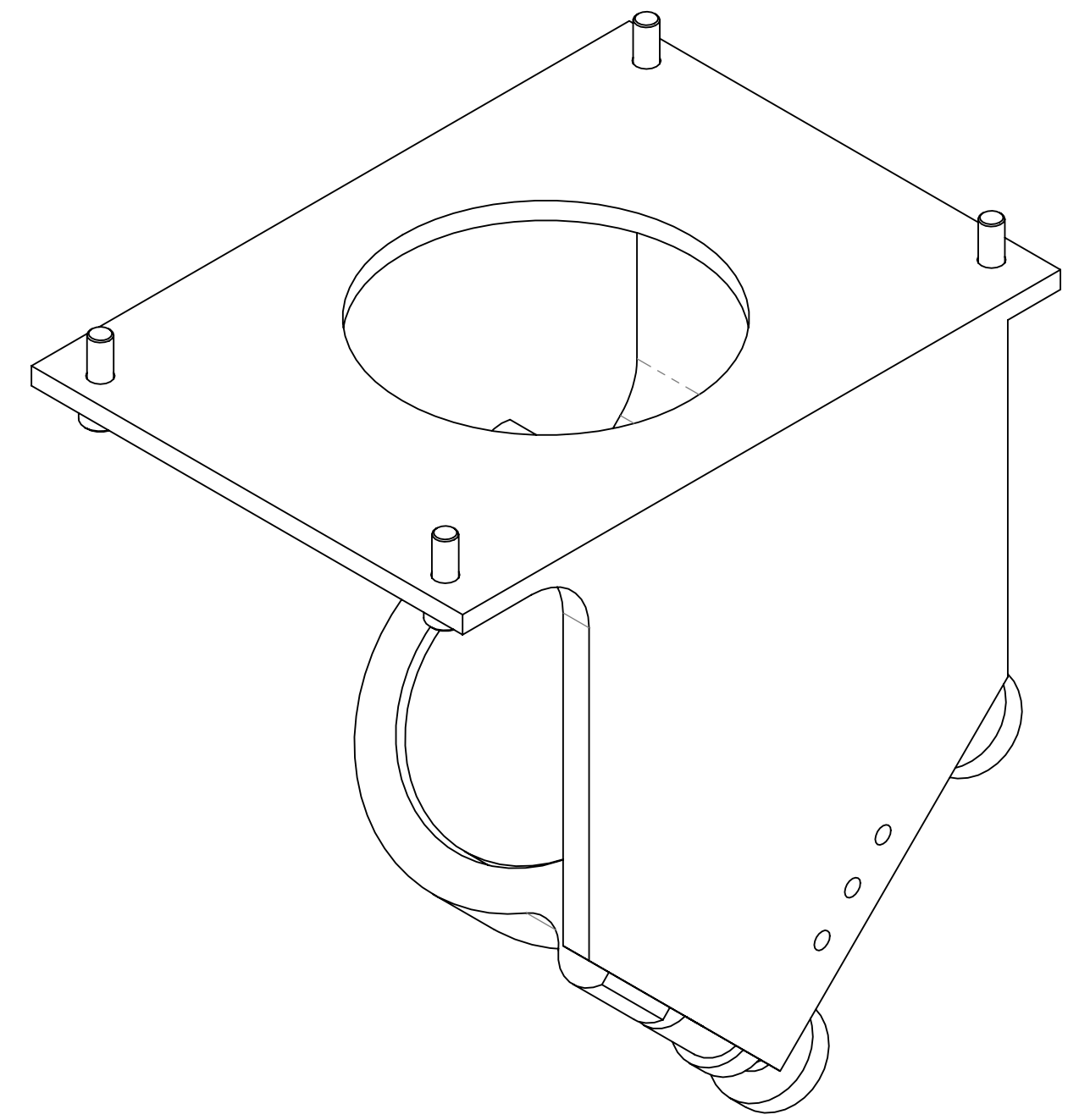
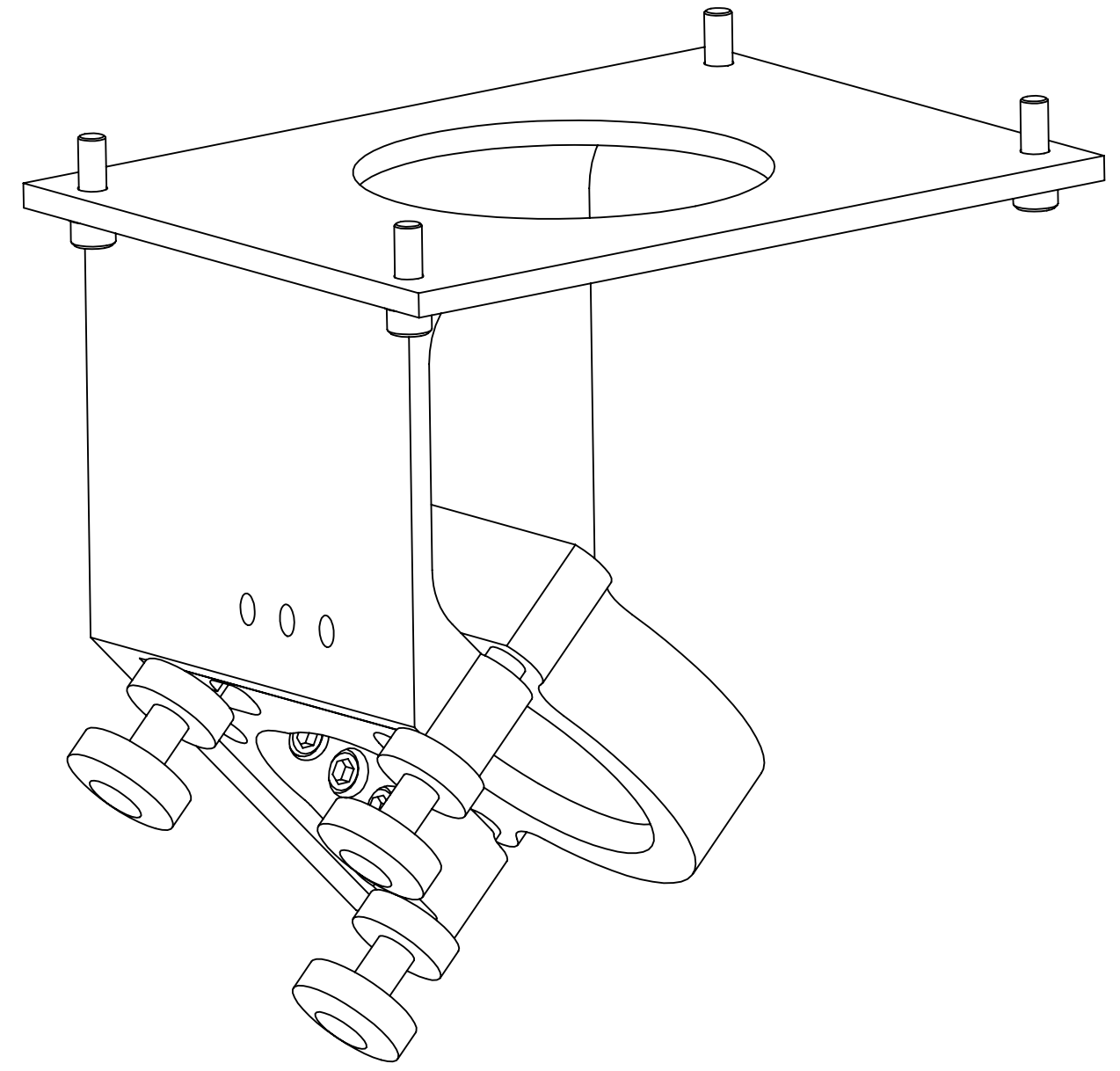


NOTES CONTINUED:
 5 APPROXIMATE WEIGHT = 1.327 LB
 6 TORQUE TO 11.5 IN-LB [1.3 N-m]



REV.	DATE	DCN #	DRAWING TREE #
v2	22 AUG 2011	E1100655-v1	E1100656-v1
-	-	-	-
-	-	-	-



ITEM NO.	PART NUMBER	DESCRIPTION	MATERIAL	REQ. QTY.	SPARE	TOTAL
6	D1101547	H2 VIEWPORT CAMERA MIRROR FIXTURE	6061 Alloy	1	0	1
5	U200-AC3K	Mirror Mount	6061 Alloy	1	0	1
4	D1101256	2" DIA. ENHANCED Al MIRROR, CO2P VP ENCLOSURE	Glass	1	0	1
3	C-808-N	SHCS #8-32 X 0.5	18-8 SSSL	4	1	5
2	WF-08	FLAT WASHER, #8, .169 ID, .304 OD, .032 THK	18-8 SSSL	4	1	5
1	C-806-N	SHCS #8-32 X 0.375	18-8 SSSL	6	2	8

NOTES AND TOLERANCES: (UNLESS OTHERWISE SPECIFIED)	
1. INTERPRET DRAWING PER ASME Y14.5-1994.	
2. REMOVE ALL SHARP EDGES, .005-.015, FOR MACHINED PARTS. ROUND ALL EDGES APPROXIMATELY R.02 FOR SHEET METAL PARTS.	
3. DO NOT SCALE FROM DRAWING.	
4. ALL MACHINING FLUIDS MUST BE FULLY SYNTHETIC, FULLY WATER SOLUBLE AND FREE OF SULFUR, SILICONE, AND CHLORINE.	
MATERIAL	N/A
FINISH	N/A

LIGO CALIFORNIA INSTITUTE OF TECHNOLOGY
 MASSACHUSETTS INSTITUTE OF TECHNOLOGY

SYSTEM: ADVANCED LIGO SUB-SYSTEM: AOS

NEXT ASSY: D1003193

PART NAME: H2 VIEWPORT CAMERA MIRROR ASSEMBLY

DESIGNER	A. LYNCH	05 AUG 2011	SIZE	DWG. NO.	REV.
DRAFTER	A. LYNCH	08 AUG 2011	D	D1101235	v2
CHECKER	M. JACOBSON	22 AUG 2011			
APPROVAL	A. BROOKS	22 AUG 2011	SCALE: 1:1	PROJECTION:	SHEET 1 OF 1

D1101235_H2_VIEWPORT_CAMERA_MIRROR_ASSY_PDF_PDM_REV_K_022_DRAWING_PDM_REV_X014