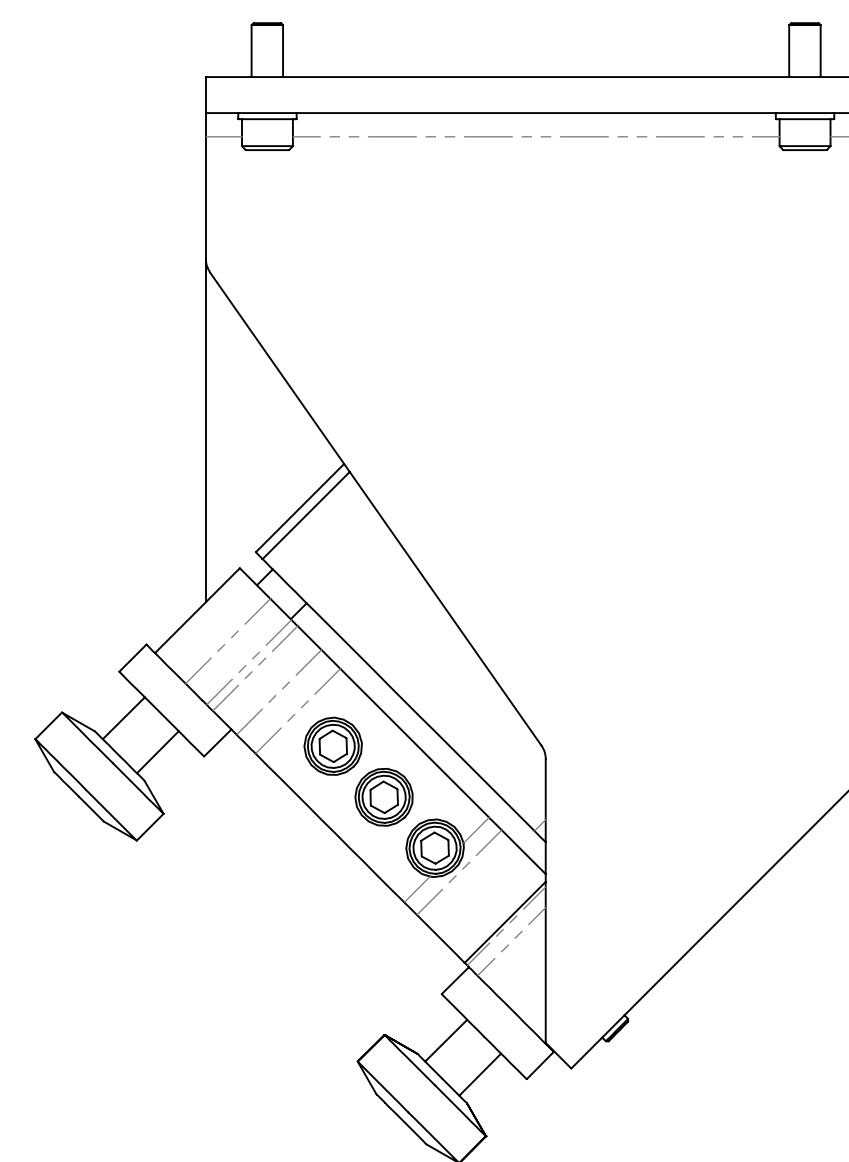
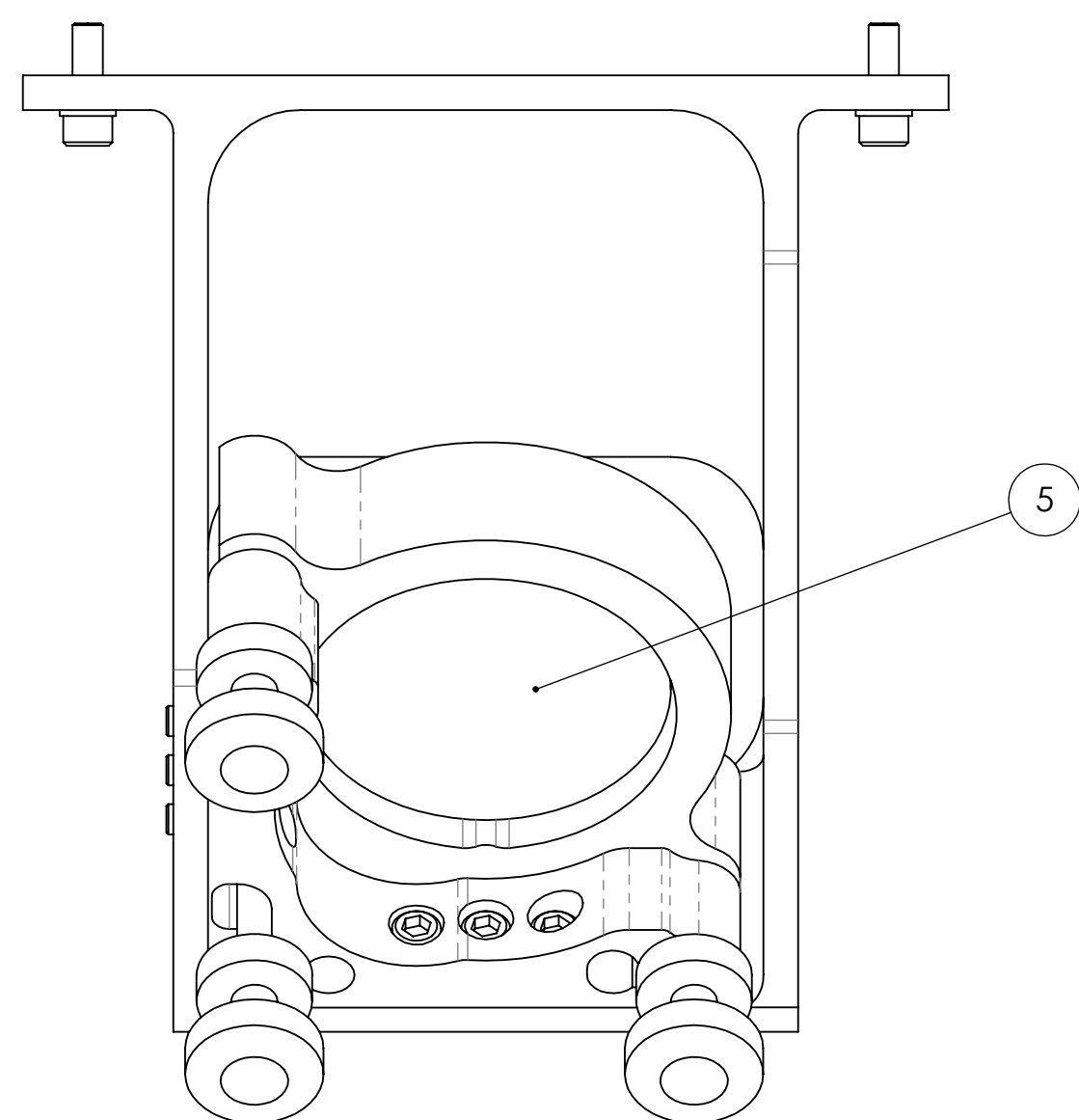
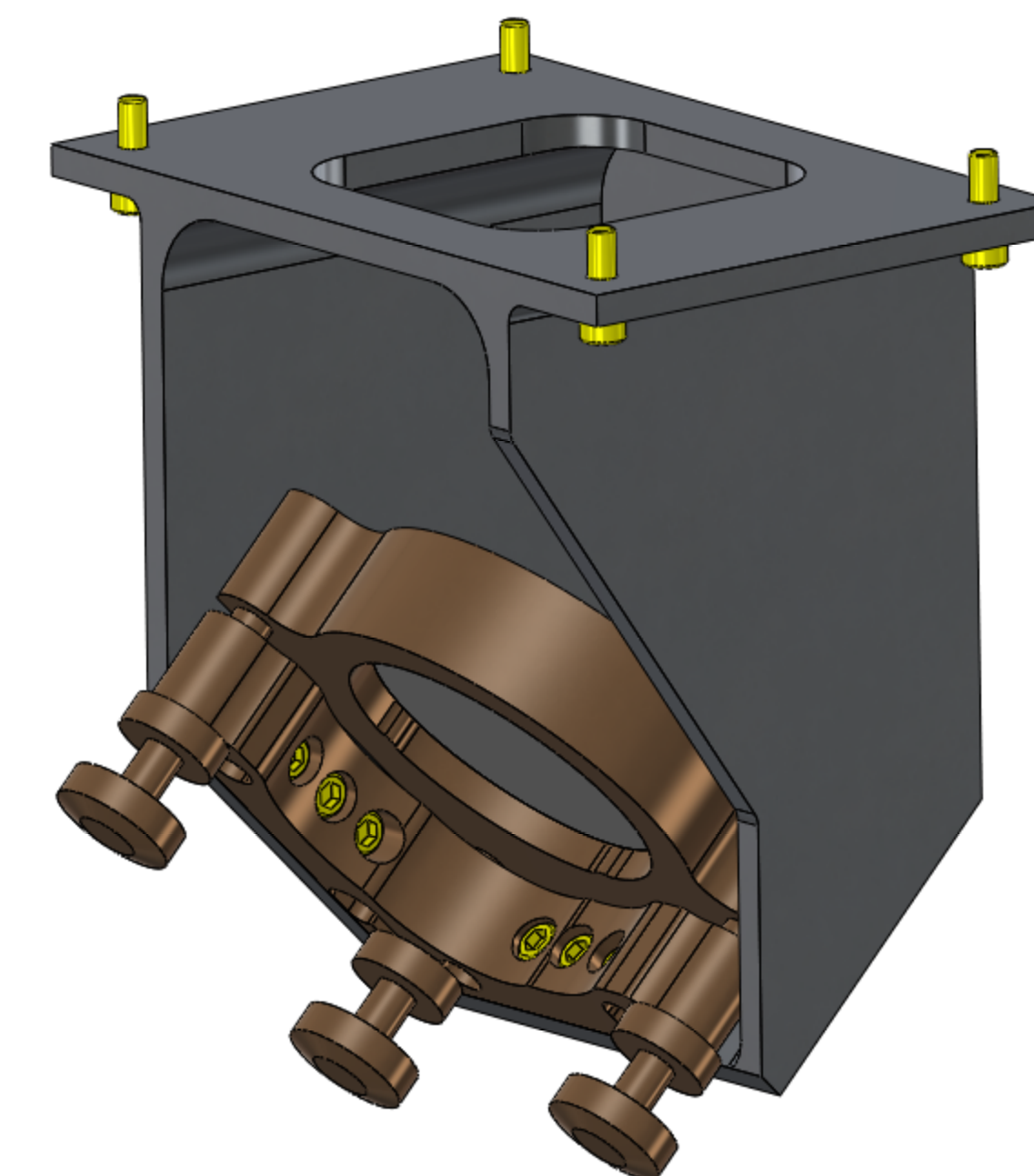
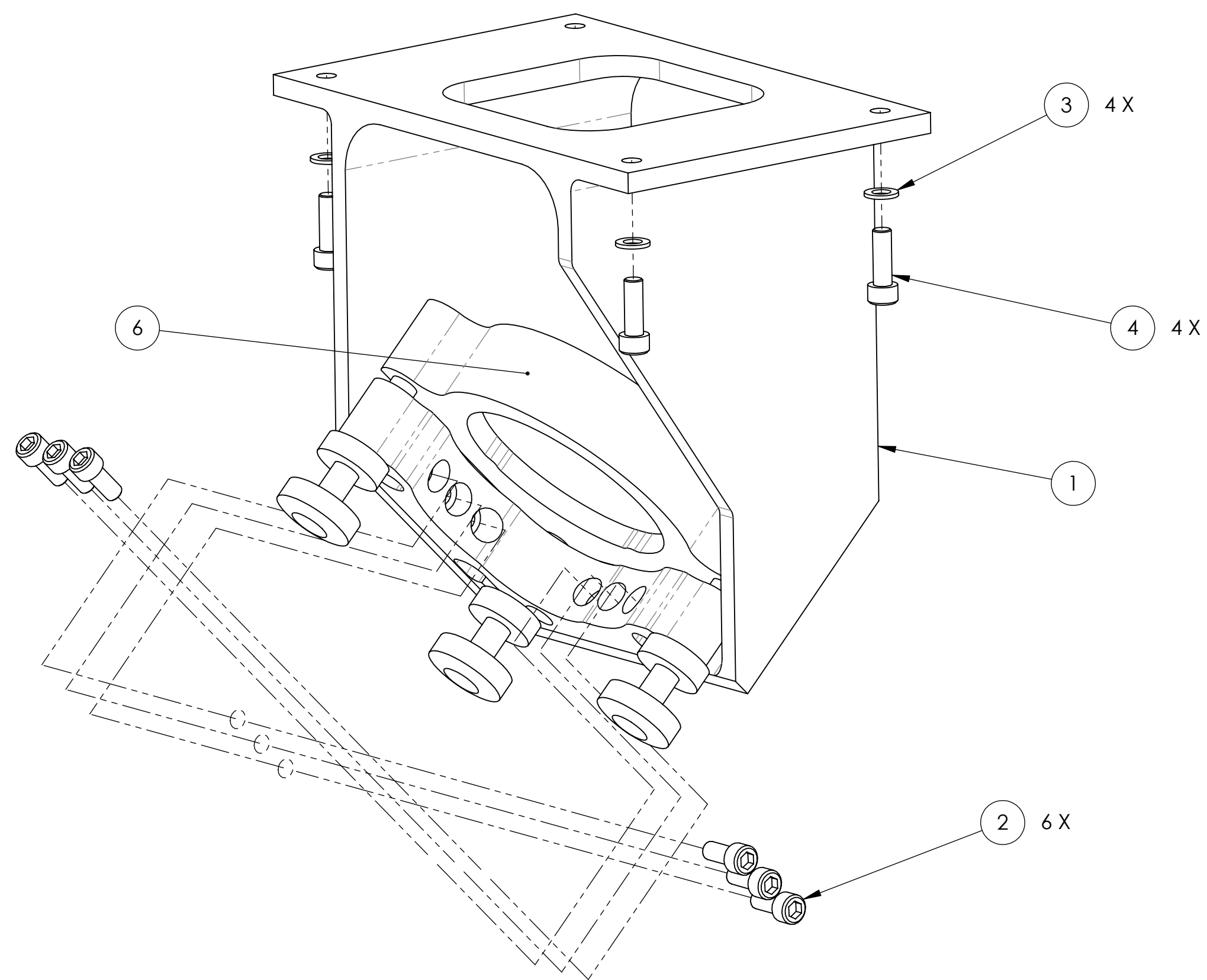
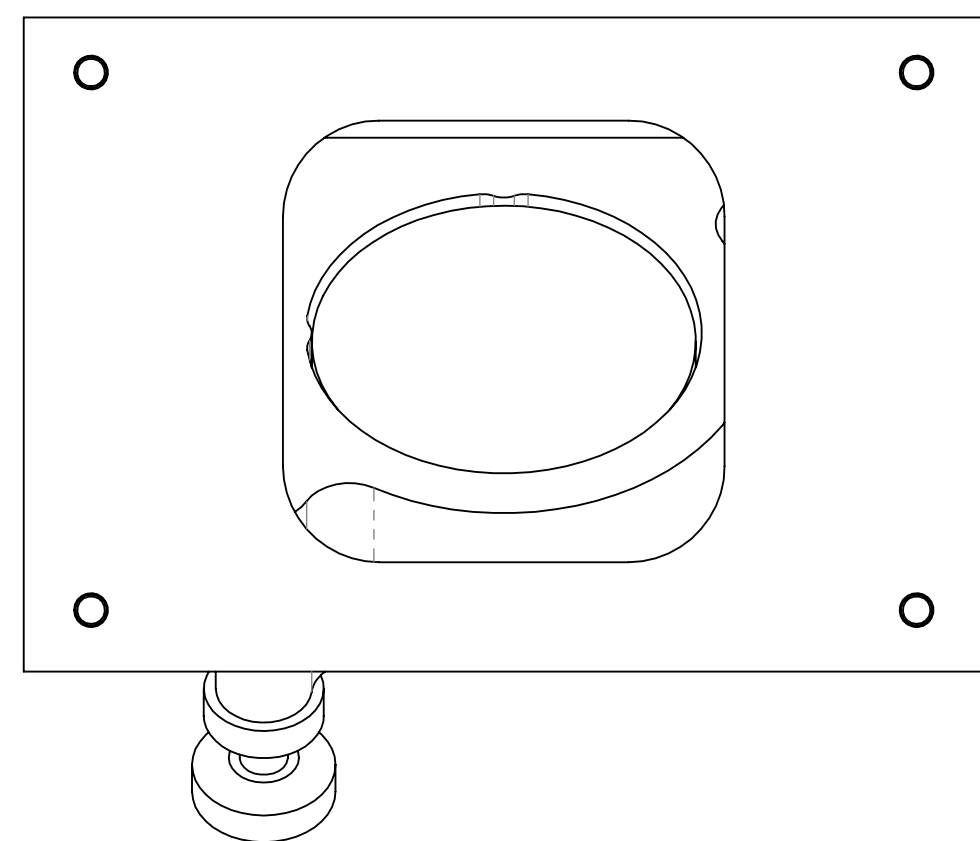


NOTES CONTINUED:
 5. APPROXIMATE WEIGHT = 1.535 LB

REV.	DATE	DCN #	DRAWING TREE #
v1	26 JUL 2011	E1100655-v1	E1100656-v1
-	-	-	-
-	-	-	-



ITEM NO.	PART NUMBER	DESCRIPTION	MATERIAL	REQ	SPARE	TOTAL
6	U200-AC3K	Mirror Mount	ALUMINUM	1	0	1
5	D1101256	2" DIA. ENHANCED Al MIRROR, CO2P VP ENCLOSURE	Glass	1	0	1
4	C-808-N	SHCS #8-32 X 0.5	18-8 SSSL	4	1	5
3	WF-08	FLAT WASHER, #8, .169 ID, .304 OD, .032 THK	18-8 SSSL	4	1	5
2	C-806-N	SHCS #8-32 X 0.375	18-8 SSSL	6	2	8
1	D1101148	H2 VIEWPORT CAMERA MIRROR FIXTURE	6061 Alloy	1	0	1

NOTES AND TOLERANCES: (UNLESS OTHERWISE SPECIFIED)	
1. INTERPRET DRAWING PER ASME Y14.5-1994.	
2. REMOVE ALL SHARP EDGES, .005-.015. FOR MACHINED PARTS. ROUND ALL EDGES APPROXIMATELY R.02 FOR SHEET METAL PARTS.	
3. DO NOT SCALE FROM DRAWING.	
4. ALL MACHINING FLUIDS MUST BE FULLY SYNTHETIC, FULLY WATER SOLUBLE AND FREE OF SULFUR, SILICONE, AND CHLORINE.	
MATERIAL	N/A
FINISH	N/A

CALIFORNIA INSTITUTE OF TECHNOLOGY MASSACHUSETTS INSTITUTE OF TECHNOLOGY	
SYSTEM	aLIGO
SUB-SYSTEM	AOS
NEXT ASSY	D1003193

PART NAME		aLIGO TCS H2 Viewport Camera Mirror Assembly	
DESIGNER	A. LYNCH	05 JUL 2011	SIZE DWG. NO.
DRAFTER	A. LYNCH	05 JUL 2011	D D1101235
CHECKER	M. JACOBSON	26 JUL 2011	
APPROVAL	P. WILLEMS	18 JUL 2011	REV. v1
SCALE: 1:1		PROJECTION:	SHEET 1 OF 1

D1101235_H2_VIEWPORT_CAMERA_MIRROR_ASSY_PDM_REV_X017_DRAWING_PDM_REV_X008