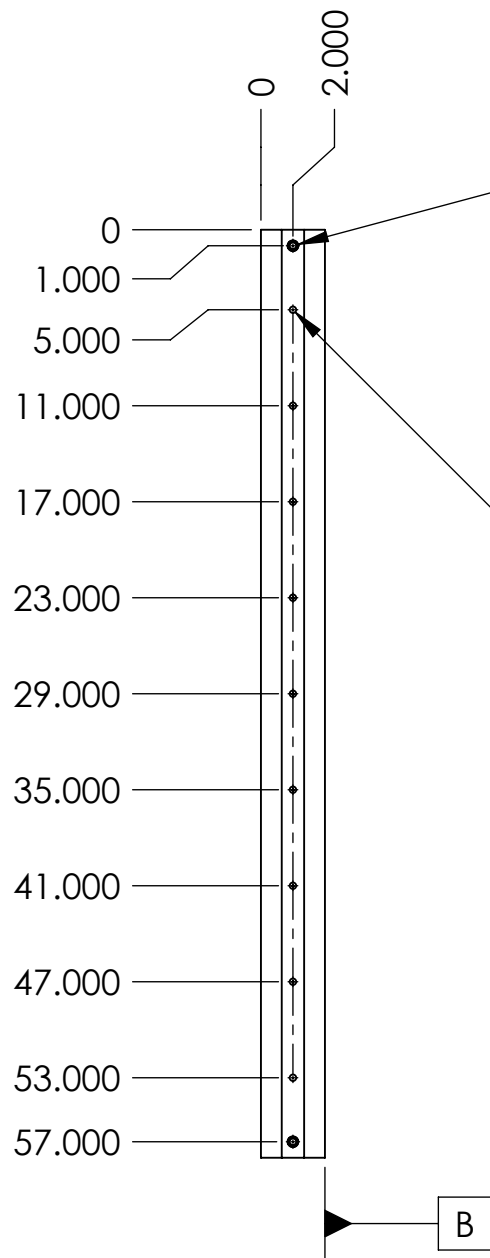


D1101180 ALIGO HAM ISI Spacer, PART PDM REV: X-001, DRAWING PDM REV: X-002

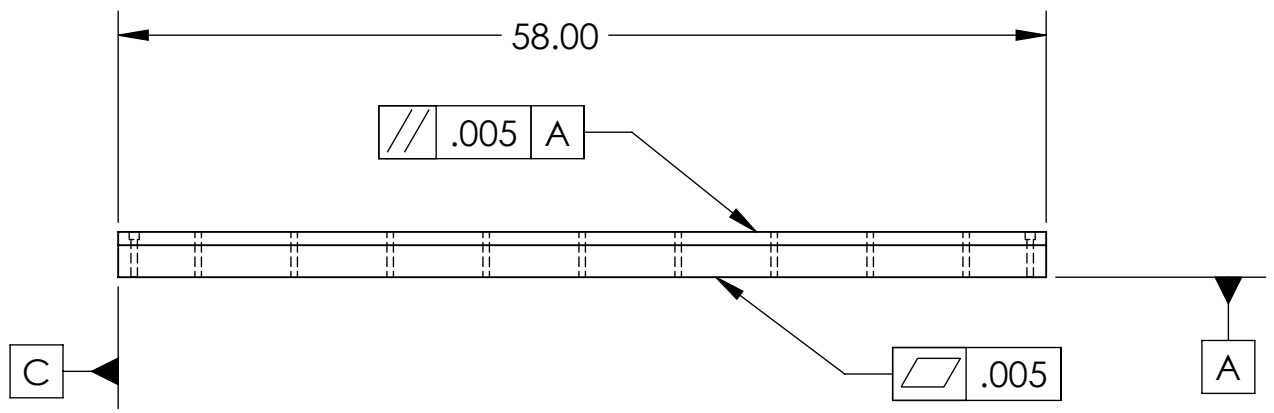
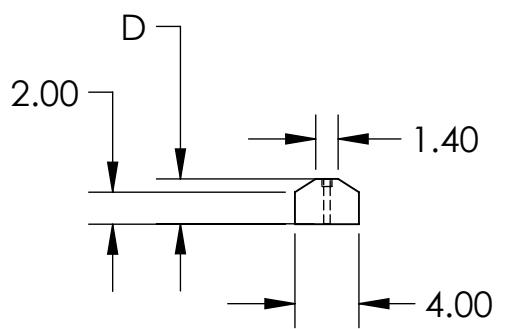
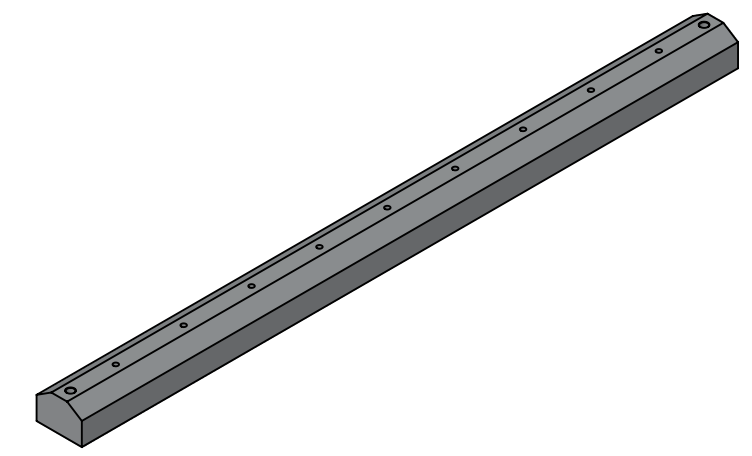
NOTES CONTINUED:
 5. SCRIBE, ENGRAVE (A VIBRATORY TOOL MAY BE USED), LASER MARK OR MECHANICALLY STAMP (NO INKS OR DYES) DRAWING PART NUMBER, REVISION (AND VARIANT OR "TYPE" IF APPLICABLE) ON NOTED SURFACE OF PART FOLLOWED ON THE NEXT LINE WITH A THREE DIGIT SERIAL NUMBER. SERIAL NUMBERS START AT 001 FOR THE FIRST ARTICLE AND PROCEED CONSECUTIVELY. USE MINIMUM 0.12" HIGH CHARACTERS, UNLESS THE SIZE OF THE PART DICTATES SMALLER CHARACTERS. EXAMPLE: DXXXXXX-VY, TYPE-XX, S/N XXX
 6. MACHINE ALL SURFACES TO REMOVE OXIDES AND MILL FINISH. USE OF ABRASIVE REMOVAL TECHNIQUES IS NOT ALLOWED.
 7. ALL PARTS SHALL BE MANUFACTURED IN ACCORDANCE WITH LIGO SPECIFICATION E0900364.

REV.	DATE	DCN #	DRAWING TREE #
-	-	-	-
-	-	-	-
-	-	-	-



2X ϕ .406 THRU ALL
 \square ϕ .625 ∇ .48
 \sphericalangle ϕ .68 X 90°, NEAR SIDE
 \sphericalangle ϕ .46 X 90°, FAR SIDE
 \oplus .010 A B C

9X ϕ .406 THRU ALL
 \oplus .010 A B C



Dimension "D"	type 00	2.830
	type 01	2.840

NOTES AND TOLERANCES: (UNLESS OTHERWISE SPECIFIED)				LIGO CALIFORNIA INSTITUTE OF TECHNOLOGY MASSACHUSETTS INSTITUTE OF TECHNOLOGY		PART NAME	
DIMENSIONS ARE IN INCHES				SYSTEM		HAM ISI	
TOLERANCES: .XX ± .02 .XXX ± .005				SUB-SYSTEM		DESIGNER S Foley 6-22-2011	
ANGULAR ± 0.5°				MATERIAL		SIZE DWG. NO.	
1. INTERPRET DRAWING PER ASME Y14.5-1994. 2. REMOVE ALL SHARP EDGES, R.02 MIN. 3. DO NOT SCALE FROM DRAWING. 4. ALL MACHINING FLUIDS MUST BE FULLY SYNTHETIC, FULLY WATER SOLUBLE AND FREE OF SULFUR, SILICONE, AND CHLORINE.				FINISH		B	
6061 Alloy				63 μ inch		D1101180	
NEXT ASSY				CHECKER		REV.	
				APPROVAL		v2	
				SCALE: 1:12		PROJECTION:	
						SHEET 1 OF 1	