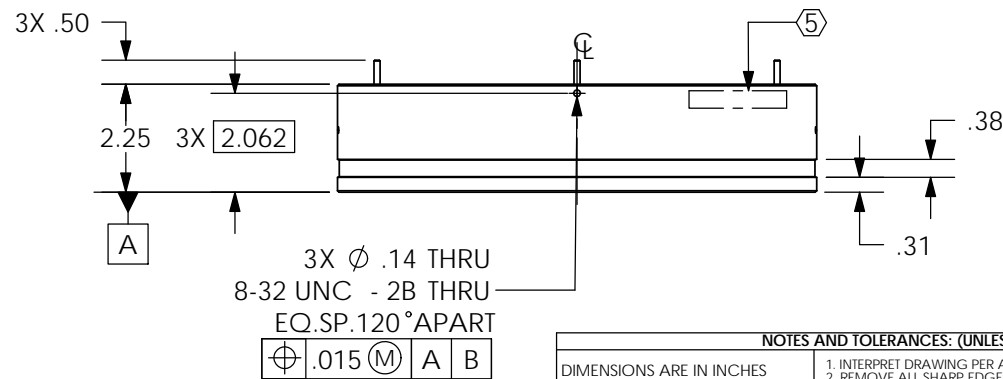
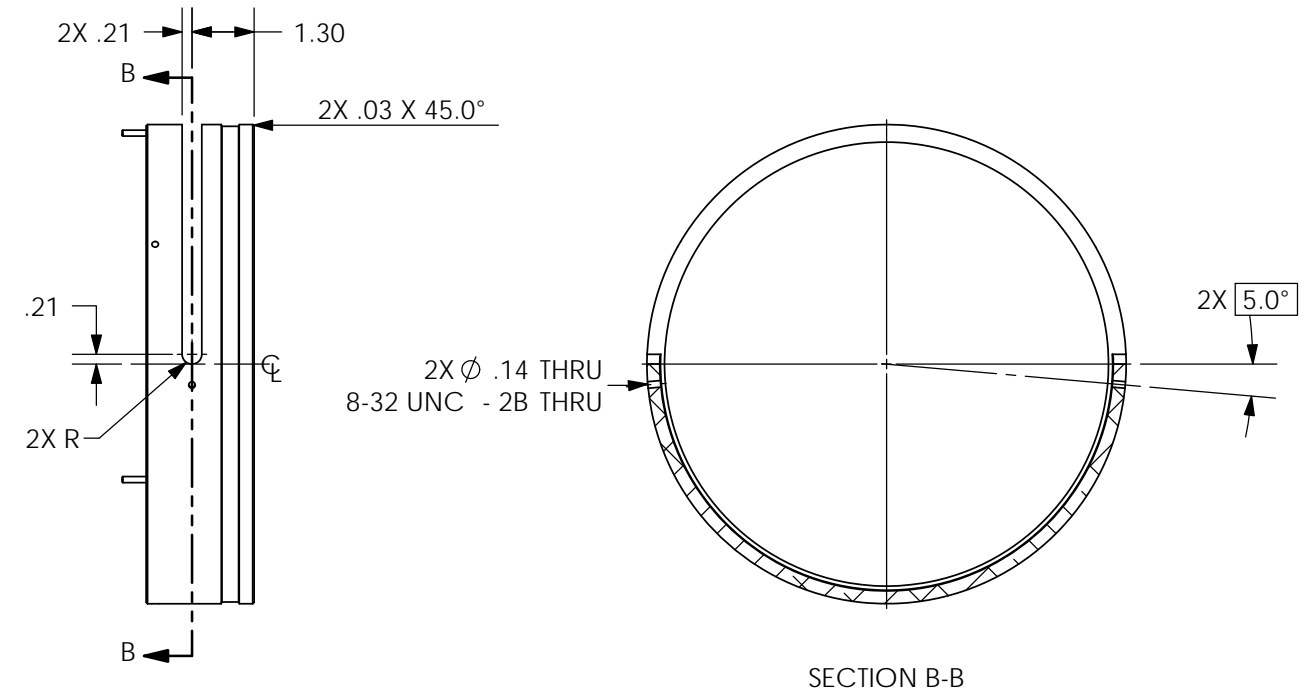
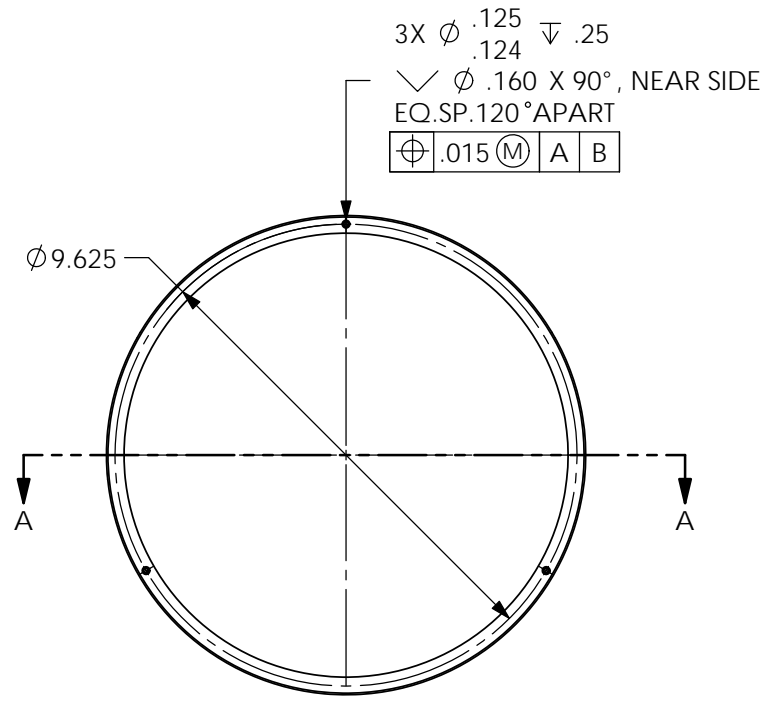
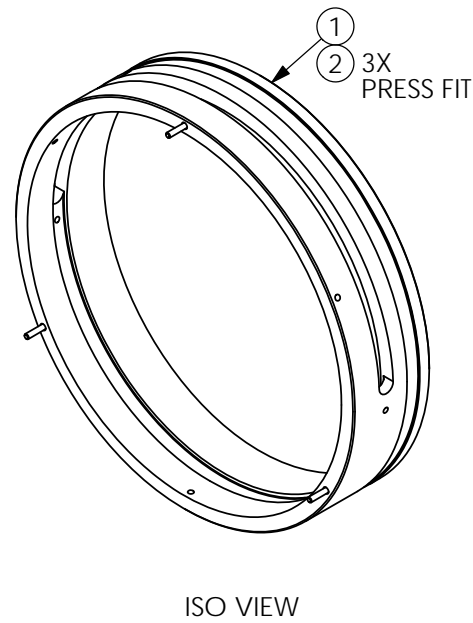
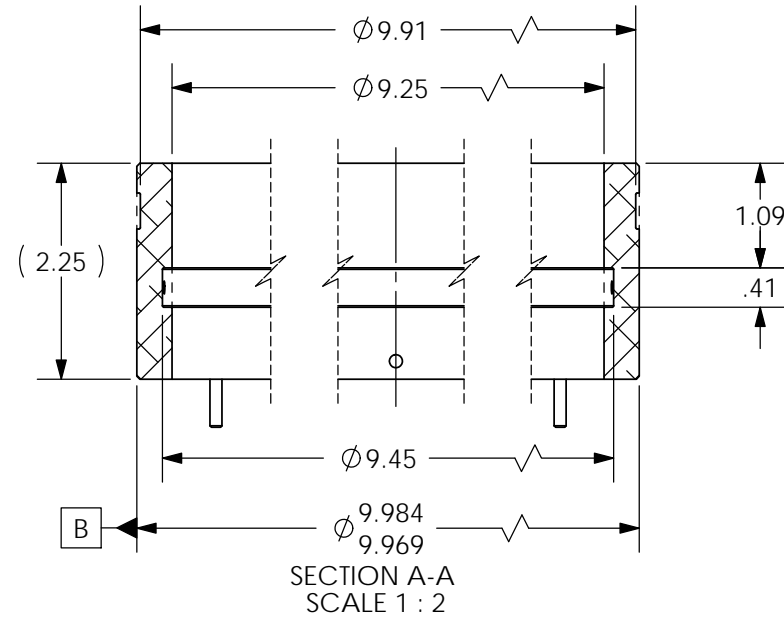


D1101170_aLIGO_VE_VIEWPORT_GUARD_ASSY., EXTENSION, PART PDM REV.: X-005, DRAWING PDM REV.: X-006

REV.	DATE	DCN #	DRAWING TREE #
v1	20 JUN 2011	E1100531-x0	-
v2	23 NOV 2011	E1101124-x0	-
v3	28 NOV 2011	E1101128-x0	-

NOTES CONTINUED:
 ⑤ SCRIBE, ENGRAVE (A VIBRATORY TOOL MAY BE USED), LASER MARK OR MECHANICALLY STAMP (NO INKS OR DYES) DRAWING PART NUMBER, REVISION (AND VARIANT OR "TYPE" IF APPLICABLE) ON NOTED SURFACE OF PART FOLLOWED ON THE NEXT LINE WITH A THREE DIGIT SERIAL NUMBER. SERIAL NUMBERS START AT 001 FOR THE FIRST ARTICLE AND PROCEED CONSECUTIVELY. USE MINIMUM 0.12" HIGH CHARACTERS, UNLESS THE SIZE OF THE PART DICTATES SMALLER CHARACTERS. EXAMPLE: DXXXXXX-VY, TYPE-XX, S/N XXX

6. UNLESS OTHERWISE SPECIFIED, MACHINE RADII .015-.030



ITEM NO.	PART NUMBER	DESCRIPTION	MATERIAL	REQ
2	97395A451	PIN, DOWEL, .13 DIA. X .75 LG.	316 SSSL	3
1	D1101170	VIEWPORT GUARD ASSY., EXTENSION	6061-T6	1

PARTS LIST

PART NAME		VIEWPORT GUARD ASSY., EXTENSION			
DESIGNER	E.SANCHEZ	20 JUN 2011	SIZE	DWG. NO.	REV.
DRAFTER	E.SANCHEZ	20 JUN 2011	B	D1101170	v3
CHECKER			SCALE: 1:4	PROJECTION:	SHEET 1 OF 1
APPROVAL					

NOTES AND TOLERANCES: (UNLESS OTHERWISE SPECIFIED)

DIMENSIONS ARE IN INCHES
 TOLERANCES:
 .XX ± .01
 .XXX ± .005
 ANGULAR ± 0.5°
 MATERIAL N/A
 FINISH 63 μinch

LIGO CALIFORNIA INSTITUTE OF TECHNOLOGY
 MASSACHUSETTS INSTITUTE OF TECHNOLOGY
 SYSTEM ADVANCED LIGO SUB-SYSTEM VE
 NEXT ASSY D1101171