

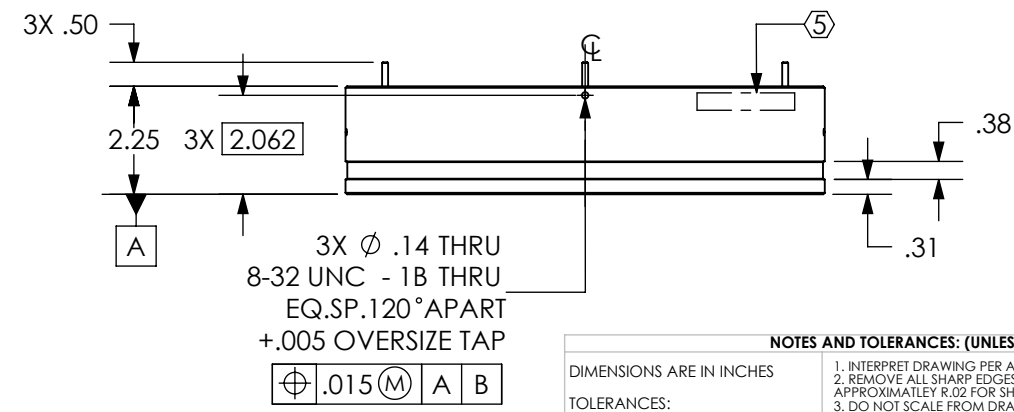
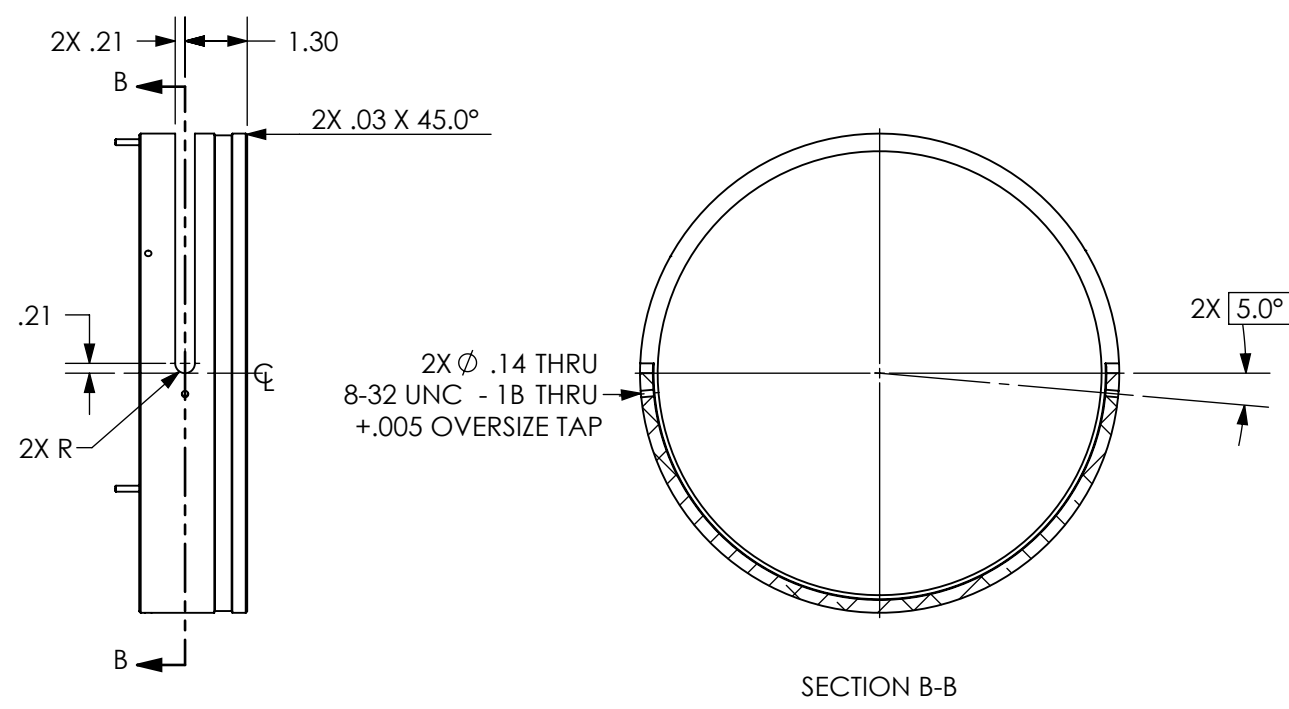
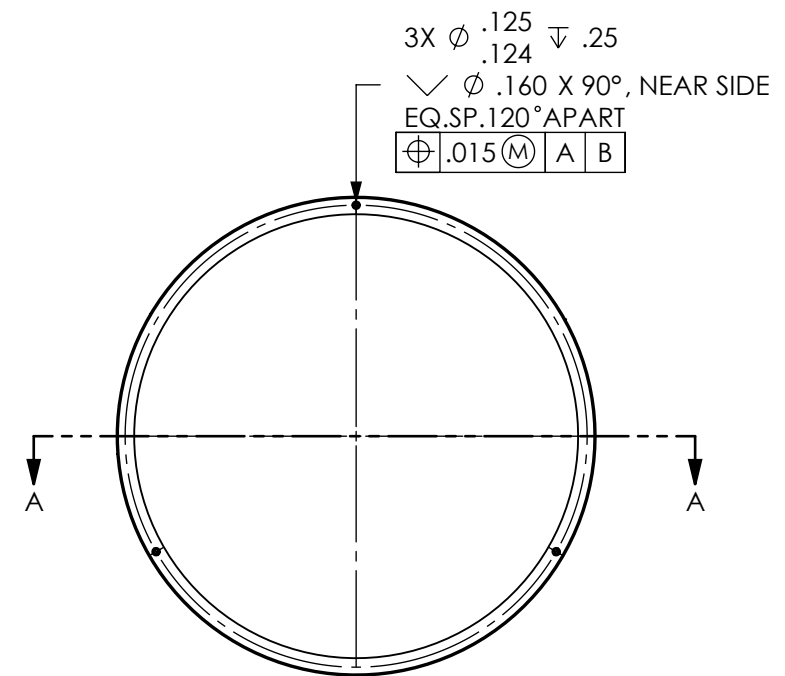
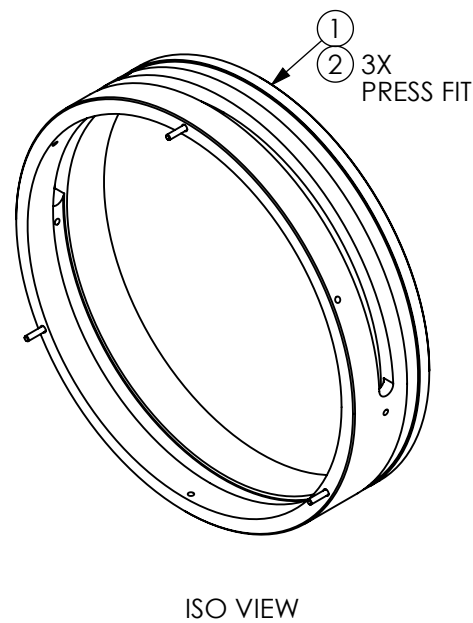
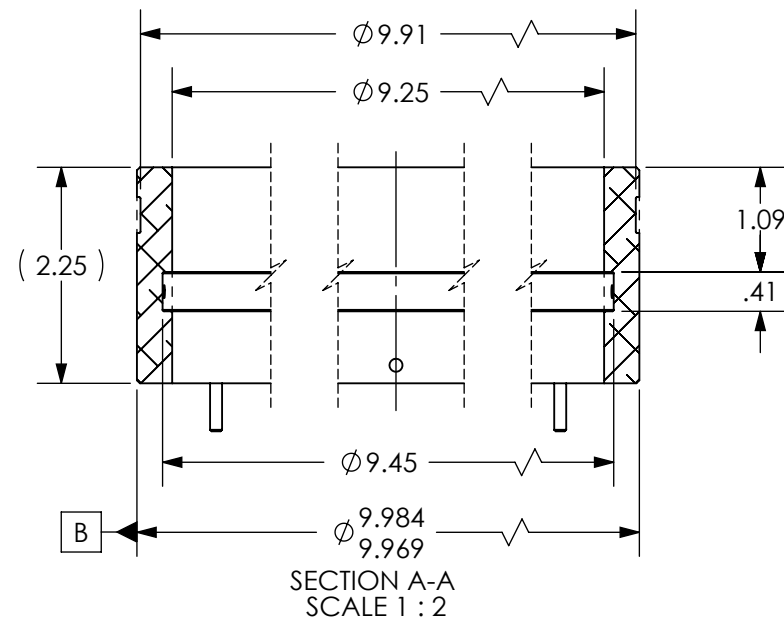
D1101170_d1LIGO_VE_VIEWPORT_GUARD_ASSY_EXTENSION, PART PDM REV: X-002, DRAWING PDM REV: X-001

NOTES CONTINUED:

⑤ SCRIBE, ENGRAVE, OR MECHANICALLY STAMP (NO INKS OR DYES) DRAWING PART NUMBER, REVISION (AND VARIANT OR "TYPE" IF APPLICABLE) ON NOTED SURFACE OF PART FOLLOWED ON THE NEXT LINE WITH A THREE DIGIT SERIAL NUMBER. SERIAL NUMBERS START AT 001 FOR THE FIRST ARTICLE AND PROCEED CONSECUTIVELY. USE MINIMUM 0.12" HIGH CHARACTERS, UNLESS THE SIZE OF THE PART DICTATES SMALLER CHARACTERS. A VIBRATORY TOOL MAY BE USED. EXAMPLE: DXXXXXX-VY, TYPE-XX, S/N XXX

6. UNLESS OTHERWISE SPECIFIED, MACHINE RADII .015-.030

REV.	DATE	DCN #	DRAWING TREE #
v1	20 JUN 2011	E1100531-x0	-
-	-	-	-
-	-	-	-



ITEM NO.	PART NUMBER	DESCRIPTION	MATERIAL	REQ
2	97395A451	PIN, DOWEL, .13 DIA. X .75 LG.	316 SSTL	3
1	D1101170	VIEWPORT GUARD ASSY., EXTENSION	6061-T6	1

NOTES AND TOLERANCES: (UNLESS OTHERWISE SPECIFIED)

DIMENSIONS ARE IN INCHES

TOLERANCES:
 .XX ± .01
 .XXX ± .005
 ANGULAR ± 0.5°

1. INTERPRET DRAWING PER ASME Y14.5-1994.
 2. REMOVE ALL SHARP EDGES, .005-.015, FOR MACHINED PARTS. ROUND ALL EDGES APPROXIMATELY R.02 FOR SHEET METAL PARTS.
 3. DO NOT SCALE FROM DRAWING.
 4. CLEAR ANODIZE PER MIL-A-8625, TYPE II

MATERIAL: N/A
 FINISH: 63 μinch

LIGO CALIFORNIA INSTITUTE OF TECHNOLOGY
 MASSACHUSETTS INSTITUTE OF TECHNOLOGY

SYSTEM: **ADVANCED LIGO** SUB-SYSTEM: **VE**

PART NAME: **VIEWPORT GUARD ASSY., EXTENSION**

DESIGNER: E.SANCHEZ 20 JUN 2011
 DRAFTER: E.SANCHEZ 20 JUN 2011
 CHECKER: []
 APPROVAL: []

SIZE: **B** DWG. NO.: **D1101170** REV.: **v1**

SCALE: 1:4 PROJECTION: [] SHEET 1 OF 1