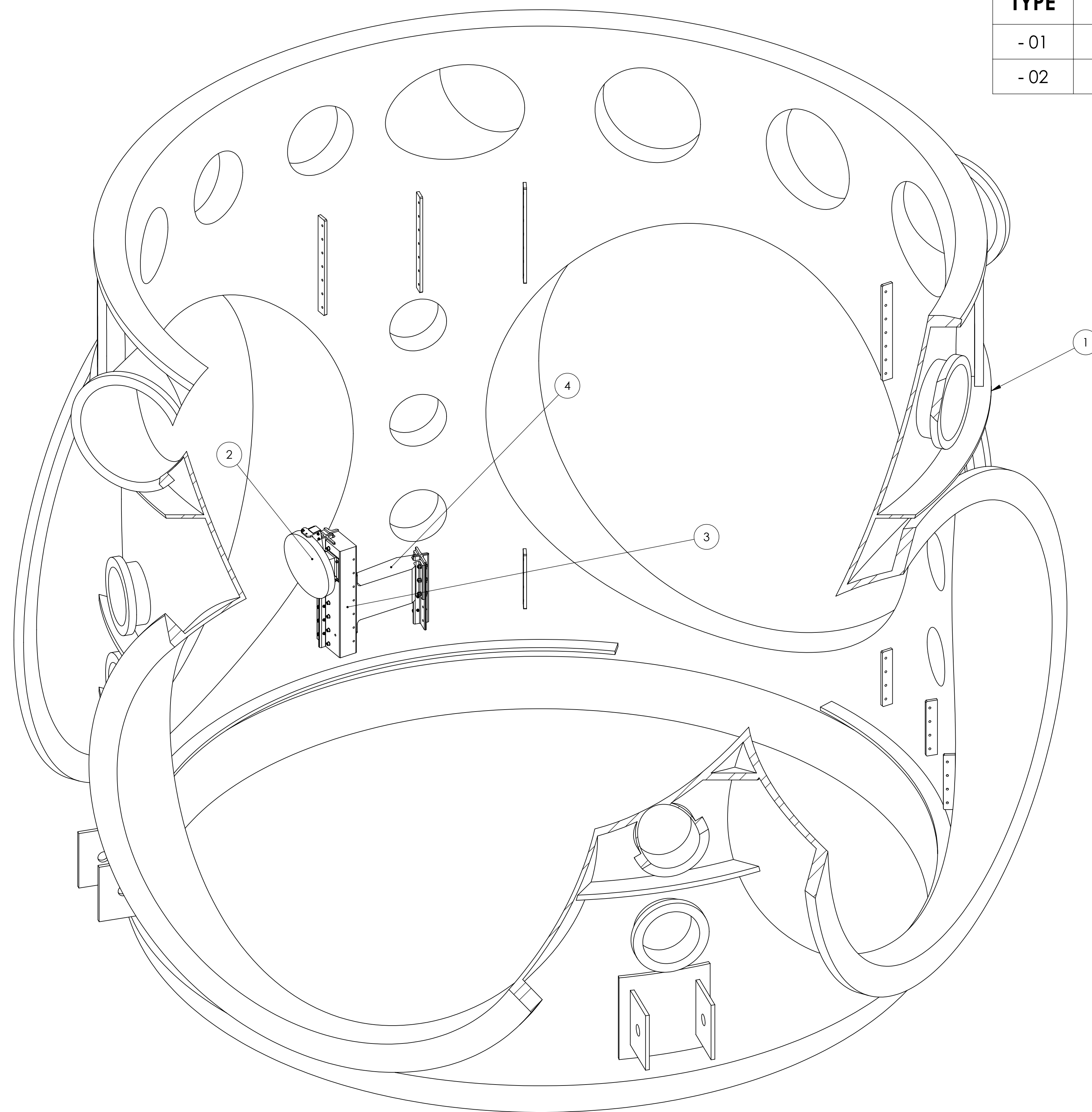


NOTES CONTINUED:

- 5 #8-32 TORQUE TO 20 in-lb, MAX
- 6 #10-32 TORQUE TO 30 in-lb, MAX
- 7 1/4-20 TORQUE TO 65 in-lb, MAX

TYPE	DESCRIPTION
- 01	X-ARM BSC 3 INSTALLATION
- 02	Y-ARM BSC 1 INSTALLATION

REV.	DATE	DCN #	DRAWING TREE #
v1	05-MAR-2012	E1101043-v1	E1101044-v1
-	-	-	-
-	-	-	-



-01
X-ARM BSC 3 INSTALLATION

ITEM NO.	PART NUMBER	DESCRIPTION	MATERIAL	D1101013-01/REQ	D1101013-02/REQ	SPARE	TOTAL
16	WF-08	WASHER FLAT #8 .U-C COMPONENTS	18-8 SSSL	2	2	1	3
5	C-812-A	SHCS 8-32 UNC-3A 3/4 LG VENTED. UC-COMPONENTS	18-8 SSSL	2	2	1	3
6	SHCV-4436	SCREW, SHC, 10-32 X 1.5 LG., .25 DIA., SHOULDER	303 SSSL	1	1	1	2
7	C-2012-N	SHCS, 1/4-20 UNC-2A X 3/4LG UC-COMPONENTS	18-8 SSSL	4	4	1	5
7	C-2024-N	SSHCS, 1/4-20 UNC 3A X 1-1/2 LG. UC-COMPONENTS	18-8 SSSL	4	4	1	5
7	NJ-2520	HEX JAM NUT, 1/4-20. UC-COMPONENTS	18-8 SSSL	8	8	2	10
7	C-2028-N	SHCS 1/4-20 UNC-3A X 1-3/4 UC COMPONENTS	18-8 SSSL	4	4	1	5
7	N-2520-A	NUT, HEX, 1/4-20 UNC-2B. UC COMPONENTS	18-8 SSSL	8	8	2	10
8	WF-25-A	WASHER, FLAT, .261D X .47OD X .032TK. UC COMPONENTS	18-8 SSSL	22	22	4	25
7	D1101395	TCS SM1 H1-L1 INTERFACE DAMPER	VITON	2	2	0	2
6	D1102088-02	ALIGO WEDGE SUPPORT ASSY, TCS, STEER MIRROR	N/A	-	1	0	1
5	D1102078-02	ALIGO MOUNT ASSY, TCS, STEERING MIRROR	N/A	-	1	0	1
4	D1102088-01	ALIGO, WEDGE SUPPORT ASSY, TCS STEER MIRROR 1	N/A	1	-	0	1
3	D1102078-01	ALIGO MOUNT ASSY, TCS, STEERING MIRROR	N/A	1	-	0	1
2	D1102029	ALIGO TCS MIRROR ASSY	N/A	1	1	0	1
REF	D060139	BSC Lower Shell ICD	ALSI 304	1	1	-	1

NOTES AND TOLERANCES: (UNLESS OTHERWISE SPECIFIED)	
1. INTERPRET DRAWING PER ASME Y14.5-1994.	
2. REMOVE ALL SHARP EDGES, .005-.015. FOR MACHINED PARTS. ROUND ALL EDGES APPROXIMATELY R.02 FOR SHEET METAL PARTS.	
3. DO NOT SCALE FROM DRAWING.	
4. ALL MACHINING FLUIDS MUST BE FULLY SYNTHETIC, FULLY WATER SOLUBLE AND FREE OF SULFUR, SILICONE, AND CHLORINE.	
DIMENSIONS ARE IN INCHES	
TOLERANCES:	
.XX ±	
.XXX ±	
ANGULAR ± °	
MATERIAL	N/A
FINISH	N/A μinch

ALIGO CALIFORNIA INSTITUTE OF TECHNOLOGY
MASSACHUSETTS INSTITUTE OF TECHNOLOGY

SYSTEM: ADVANCED LIGO SUB-SYSTEM: AOS

PART NAME: ALIGO TCS CO2P STEERING MIRROR 1 ASSY, H1-L1

DESIGNER: M. JACOBSON 27 MAY 2011 SIZE: DWG. NO. D1101013 REV. v1

DRAFTER: A. COLE 04-NOV-2011

CHECKER: J. LEWIS 05-MAR-2012

APPROVAL: A. BROOKS 04-NOV-2011 SCALE: 1:24 PROJECTION: SHEET 1 OF 7

D1101013_ALIGO_TCS_CO2P_STEERING_MIRROR_1_ASSY_H1-L1_PDM_PDM_REV_X-151_DRAWING_PDM_REV_X-019

8

7

6

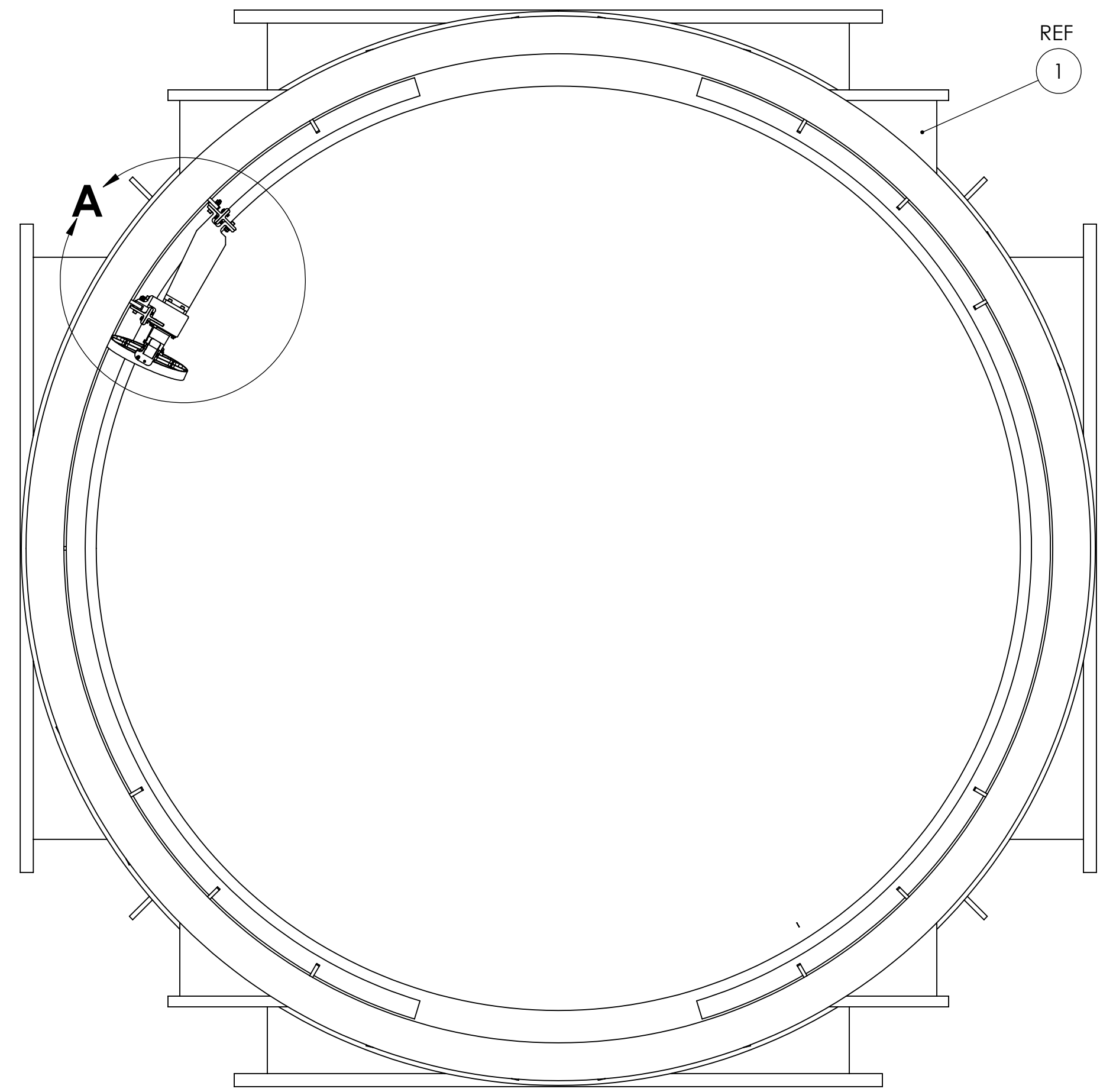
5

4

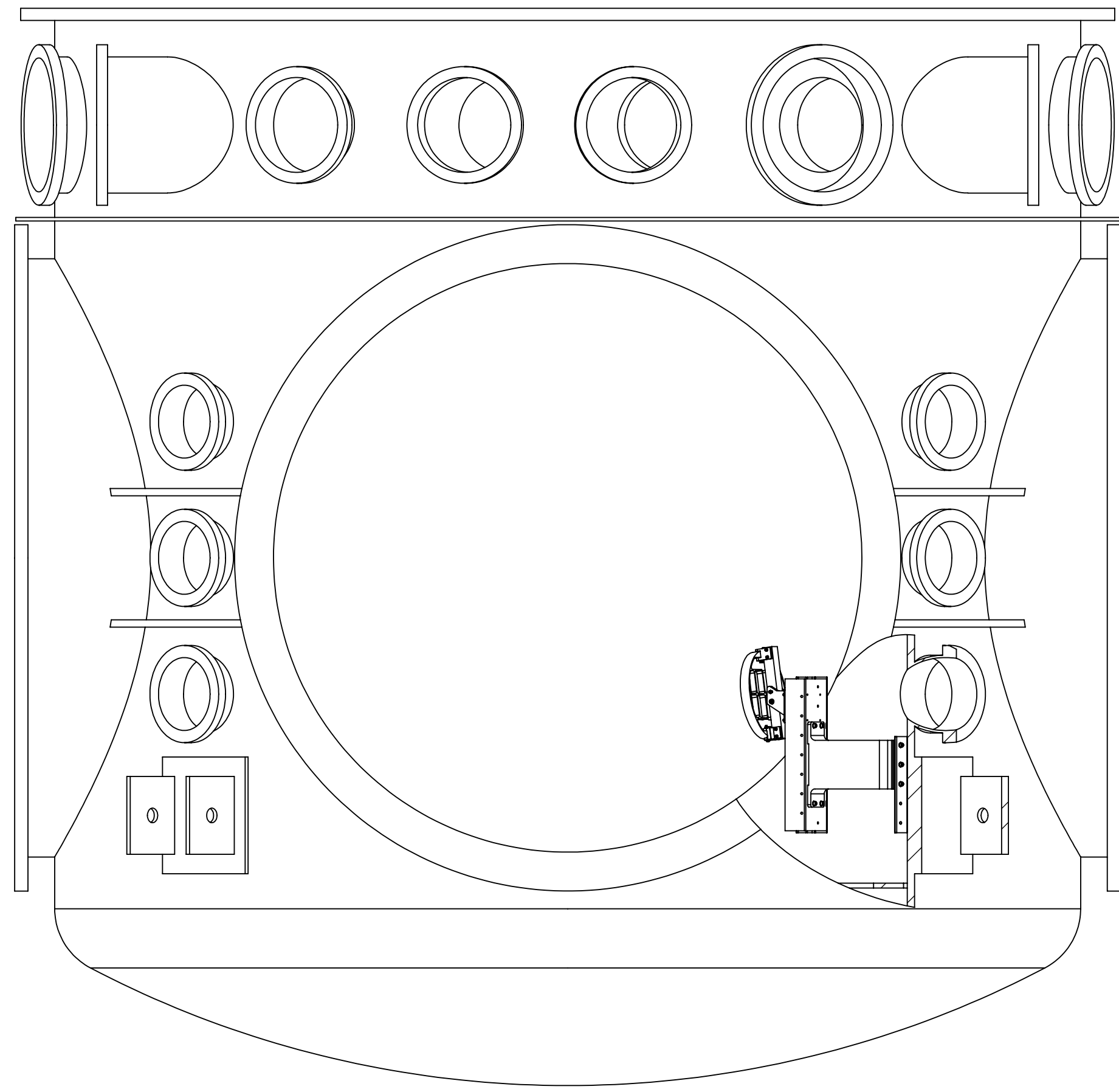
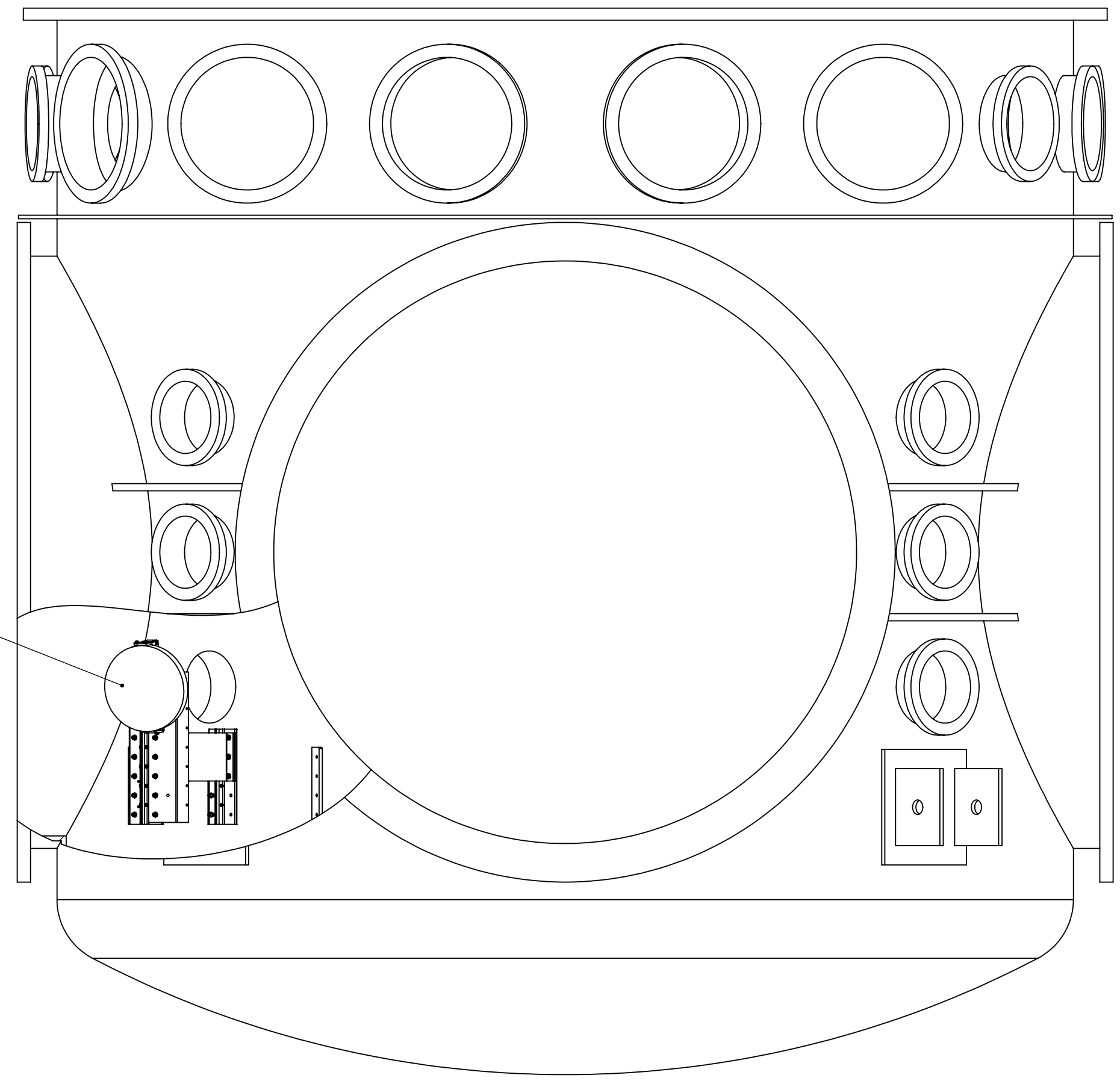
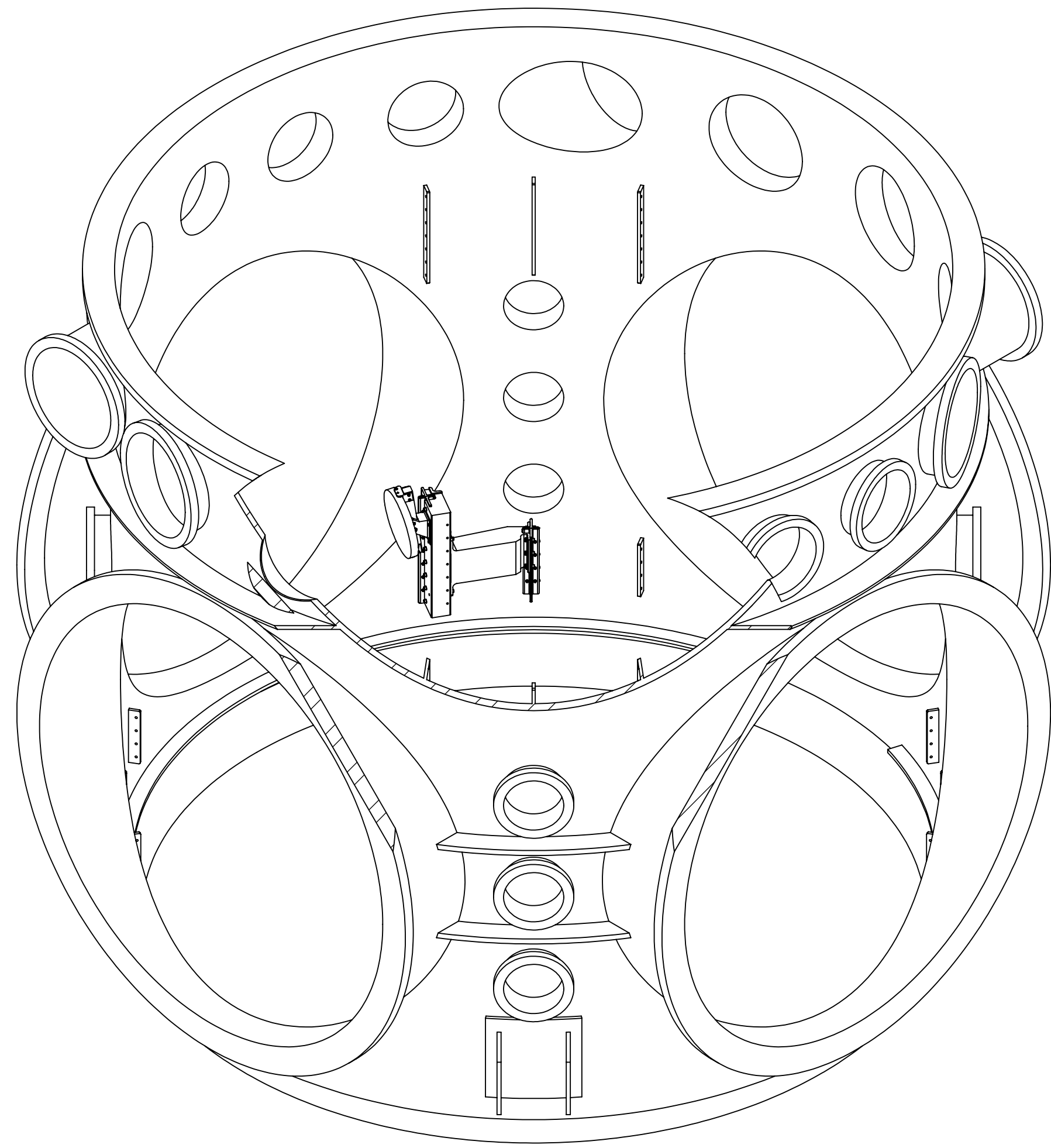
3

2

1



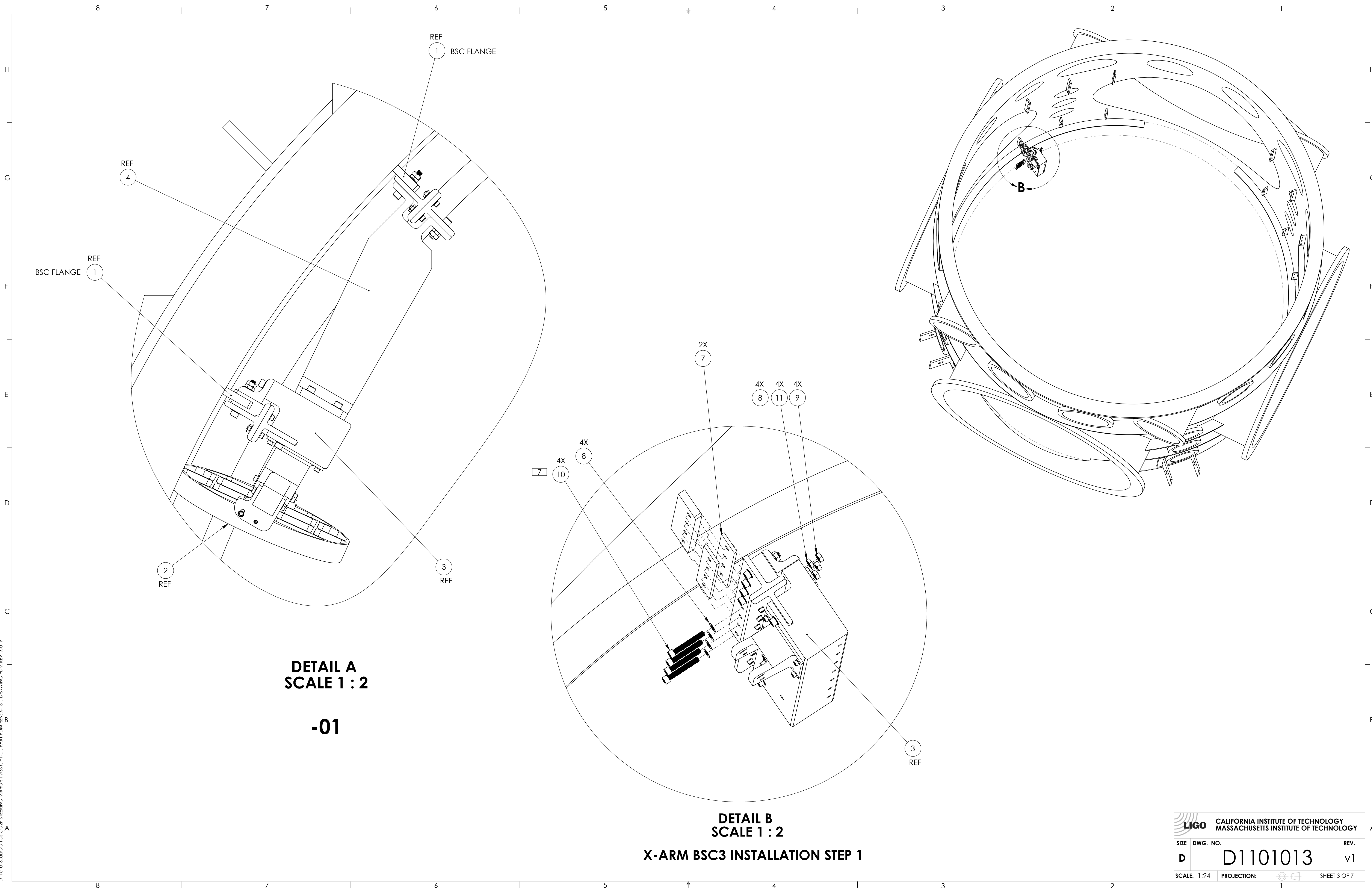
➔ + X
ARM



-01

LIGO CALIFORNIA INSTITUTE OF TECHNOLOGY MASSACHUSETTS INSTITUTE OF TECHNOLOGY		REV.
SIZE DWG. NO.	D1101013	v1
SCALE: 1:24	PROJECTION:	SHEET 2 OF 7

D1101013_dugotcs_c02p_steering_mirror_1 Assy_H.L1_PART_PDM_REV_X:151_DRAWING_PDM_REV_X:019



**DETAIL A
SCALE 1 : 2**

-01

**DETAIL B
SCALE 1 : 2**

X-ARM BSC3 INSTALLATION STEP 1

CALIFORNIA INSTITUTE OF TECHNOLOGY MASSACHUSETTS INSTITUTE OF TECHNOLOGY		REV.
SIZE	DWG. NO.	REV.
D	D1101013	v1
SCALE: 1:24	PROJECTION:	SHEET 3 OF 7

D1101013.dwg TCS CO2P STEERING MIRROR 1 ASSY - H1.L1 - PART PDM REV. X:151 - DRAWING PDM REV. X:019

8

7

6

5

4

3

2

1

H

H

G

G

F

F

E

E

D

D

C

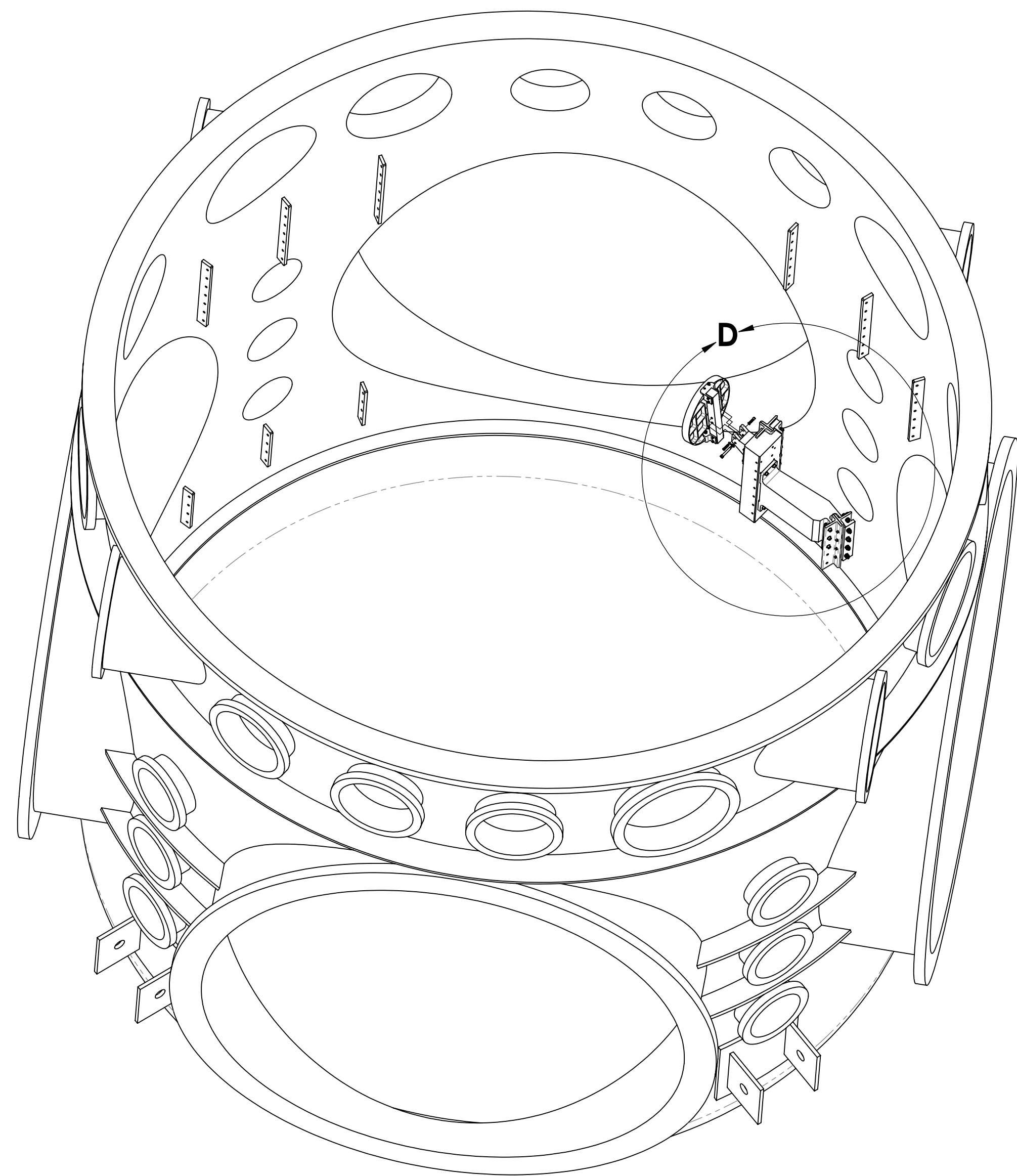
C

B

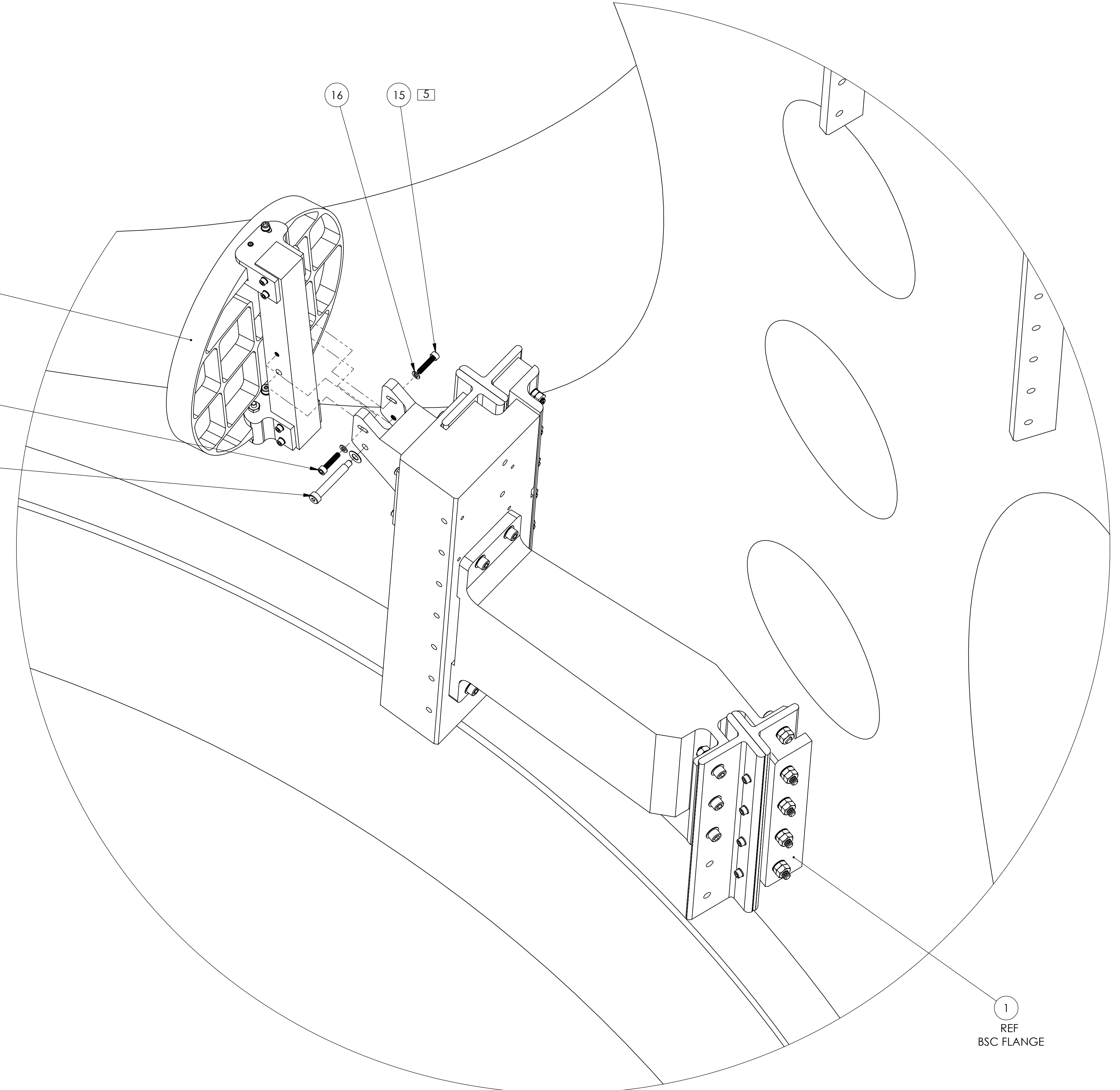
B

A

A



- REF 2
- 16
- 5 15
- 8
- 7 14



DETAIL D
SCALE 1 : 2
X-ARM BSC3 INSTALLATION STEP 3

LIGO CALIFORNIA INSTITUTE OF TECHNOLOGY MASSACHUSETTS INSTITUTE OF TECHNOLOGY	
SIZE DWG. NO.	REV.
D D1101013	v1
SCALE: 1:24	PROJECTION:
SHEET 5 OF 7	

D1101013_LIGOTCS_C02P_STEERING_MIRROR_1_ASSY_H1.L1_P01T_P01M_REV_X:151_DRAWING_P01M_REV_X:019

8

7

6

5

4

3

2

1

H

G

F

E

D

C

B

A

H

G

F

E

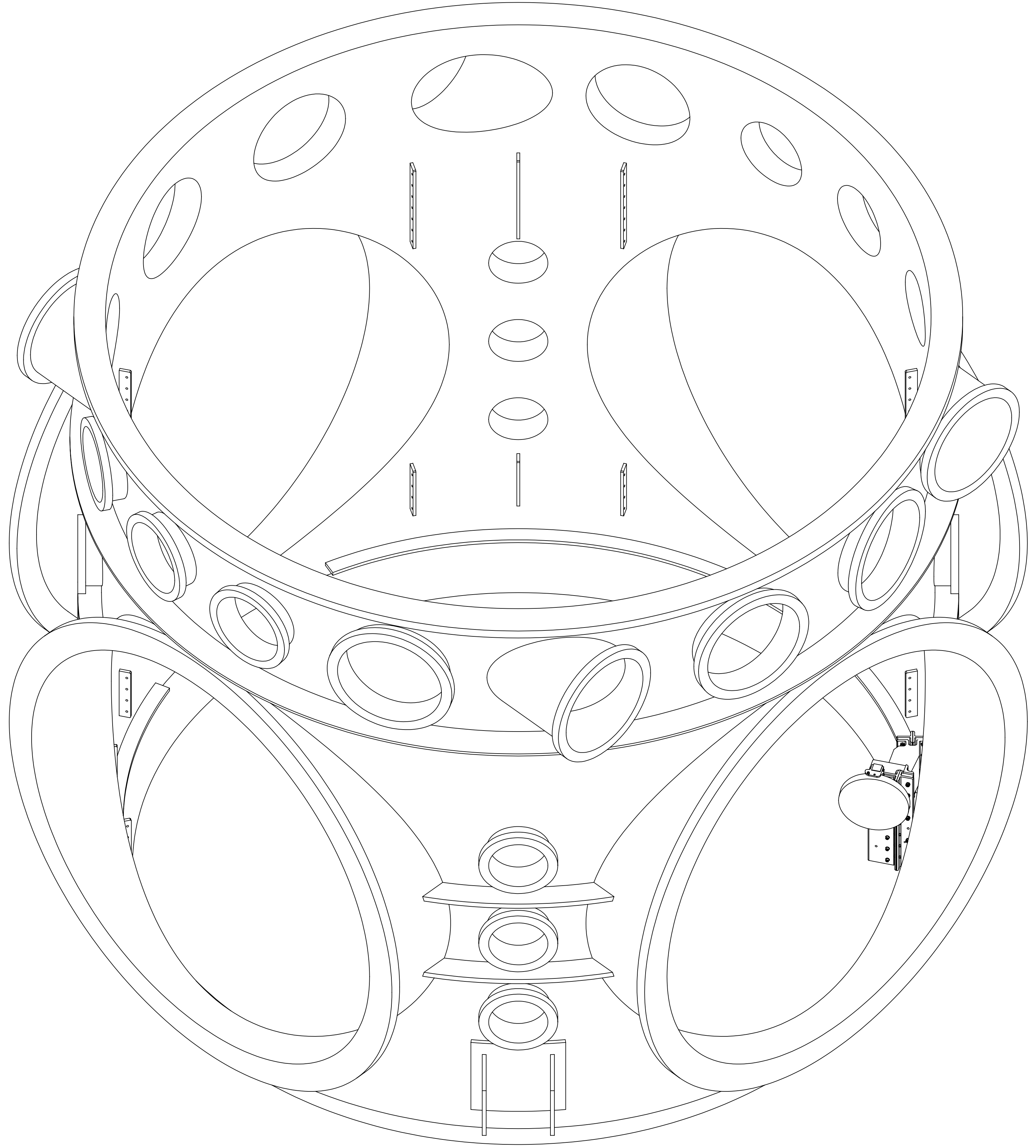
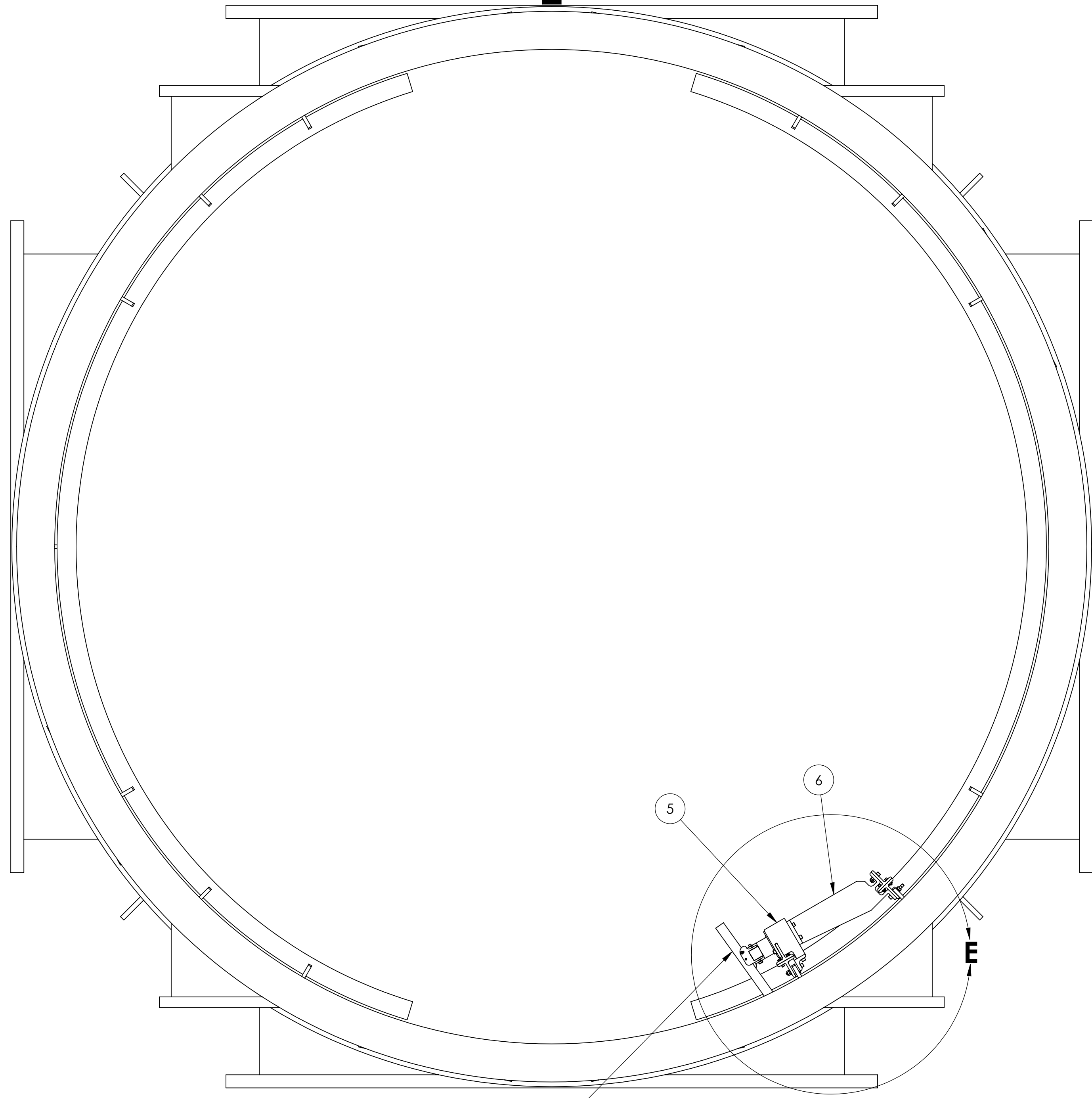
D

C

B

A

+Y ARM



-02
BSC 1 INSTALLATION

		CALIFORNIA INSTITUTE OF TECHNOLOGY MASSACHUSETTS INSTITUTE OF TECHNOLOGY	
SIZE	DWG. NO.	REV.	
D	D1101013	v1	
SCALE: 1:24	PROJECTION:	SHEET 6 OF 7	

8

7

6

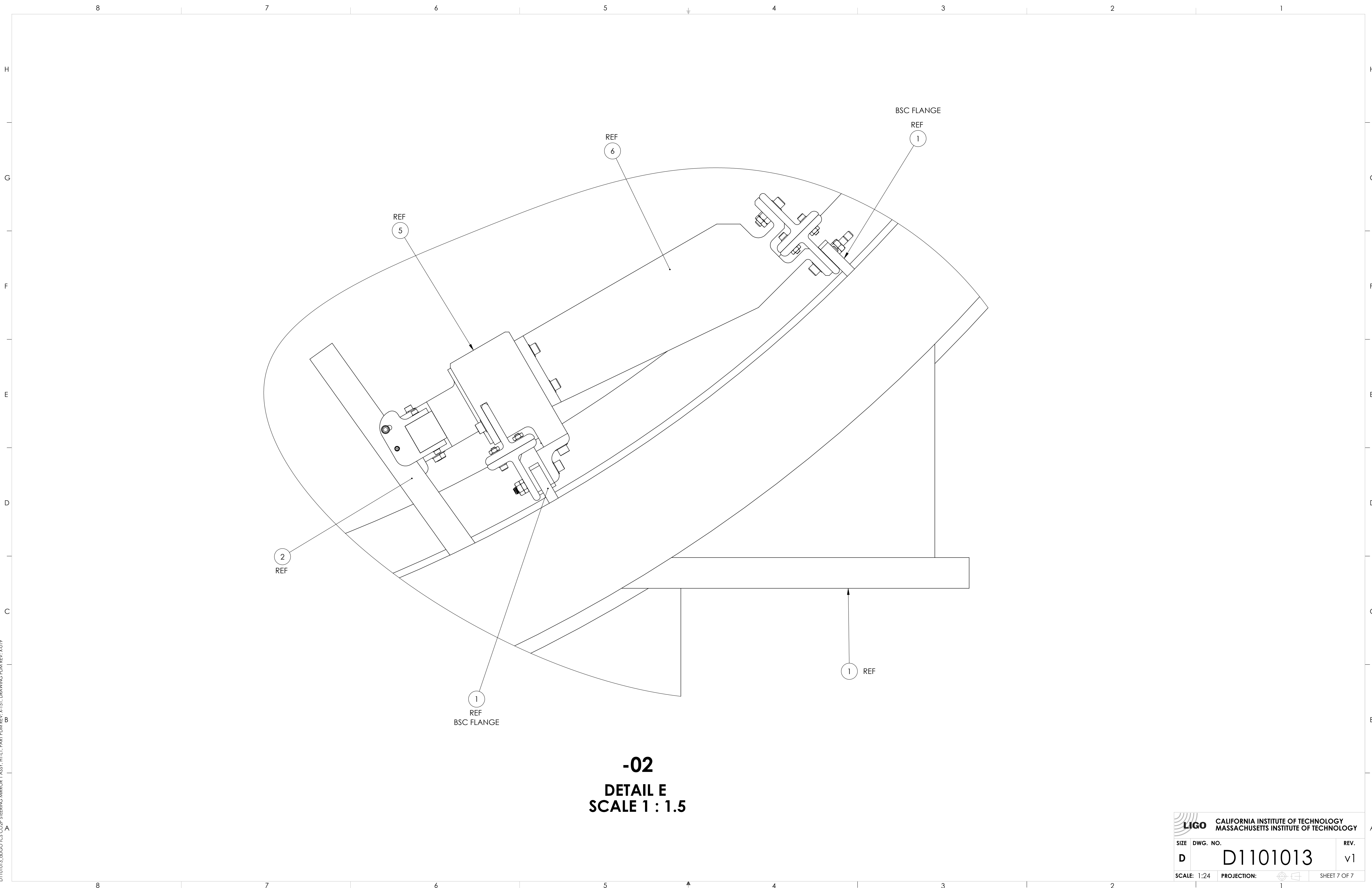
5

4

3

2

1



-02
DETAIL E
SCALE 1 : 1.5

 CALIFORNIA INSTITUTE OF TECHNOLOGY MASSACHUSETTS INSTITUTE OF TECHNOLOGY		REV. v1
SIZE D	DWG. NO. D1101013	
SCALE: 1:24	PROJECTION:	SHEET 7 OF 7

D1101013.dwg TCS CO2P STEERING MIRROR 1 ASSY. H/L1. PART PDM REV. X/151. DRAWING PDM REV. X/019