

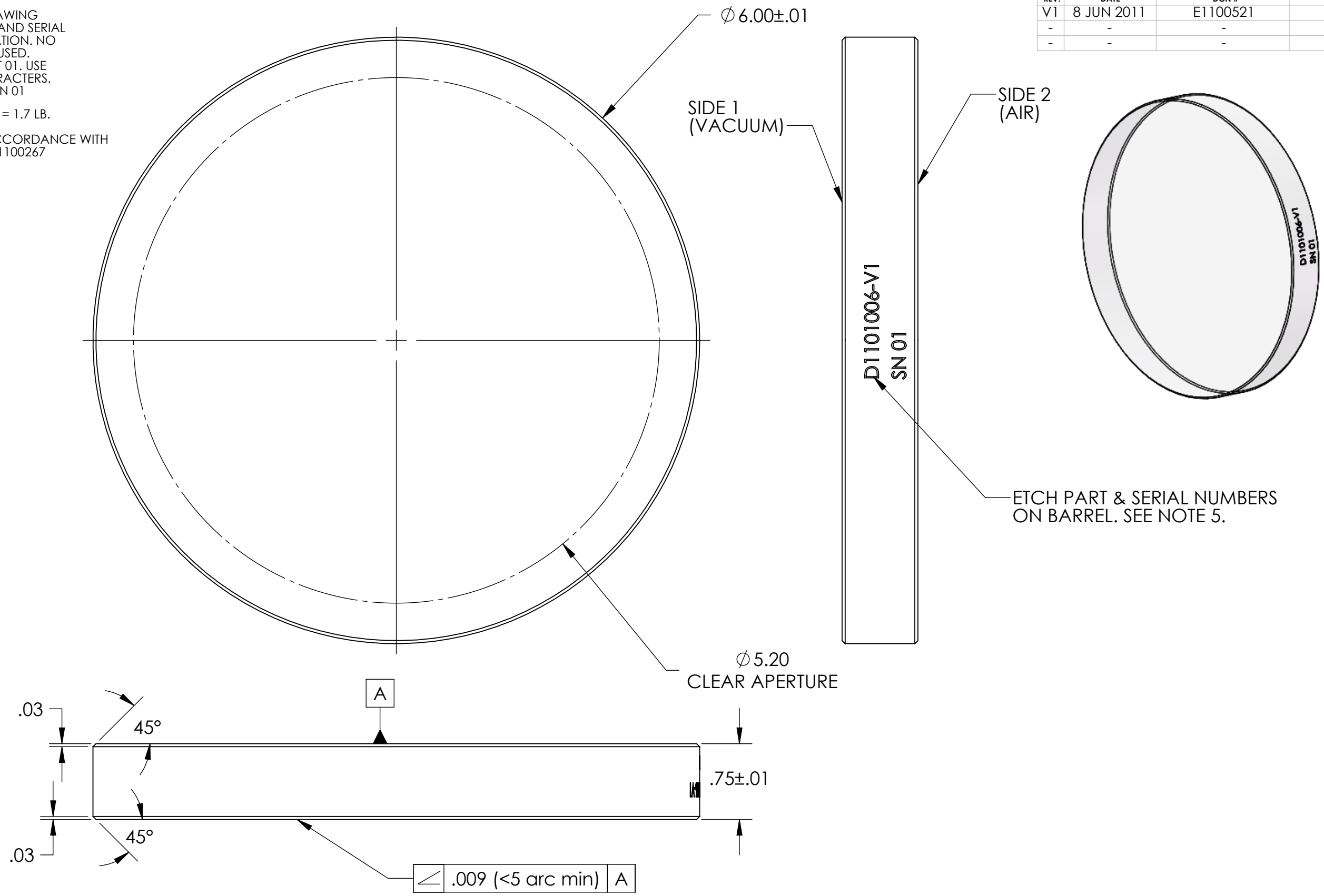
D1101006 aLIGO, high quality, non-wedged, 6in Viewport, Optic, PART PDM REV: X-000, DRAWING PDM REV: X-000

NOTES CONTINUED:
 5. PERMANENTLY MARK DRAWING PART NUMBER, REVISION AND SERIAL NUMBER AT NOTED LOCATION. NO INKS OR DYES ARE TO BE USED. SERIAL NUMBERS START AT 01. USE MINIMUM .12" HIGH CHARACTERS. EXAMPLE: D1101006-V1, SN 01

6. APPROXIMATE WEIGHT = 1.7 LB.

7. MANUFACTURED IN ACCORDANCE WITH LIGO SPECIFICATION E1100267

REV.	DATE	DCN #	DRAWING TREE #
V1	8 JUN 2011	E1100521	NA
-	-	-	-
-	-	-	-



NOTES AND TOLERANCES: (UNLESS OTHERWISE SPECIFIED)	
DIMENSIONS ARE IN INCHES	
TOLERANCES: .XX ± .01 .XXX ± .005 ANGULAR ± 1.0°	
MATERIAL	FINISH
FUSED SILICA	63 Raµinch

CALIFORNIA INSTITUTE OF TECHNOLOGY MASSACHUSETTS INSTITUTE OF TECHNOLOGY	PART NAME	
	High Quality 6in, non-wedged Viewport Optic	
SYSTEM	AOS	SUB-SYSTEM
		SLC
NEXT ASSY	D1100999	

DESIGNER	Dennis Coyne	8 JUN 2011	SIZE	DWG. NO.	REV.
DRAFTER	Dennis Coyne	27 May 2011	B	D1101006	v1
CHECKER	Mike Smith	27 May 2011			
APPROVAL	see DCN	see DCN	SCALE: 1:2	PROJECTION:	SHEET 1 OF 1