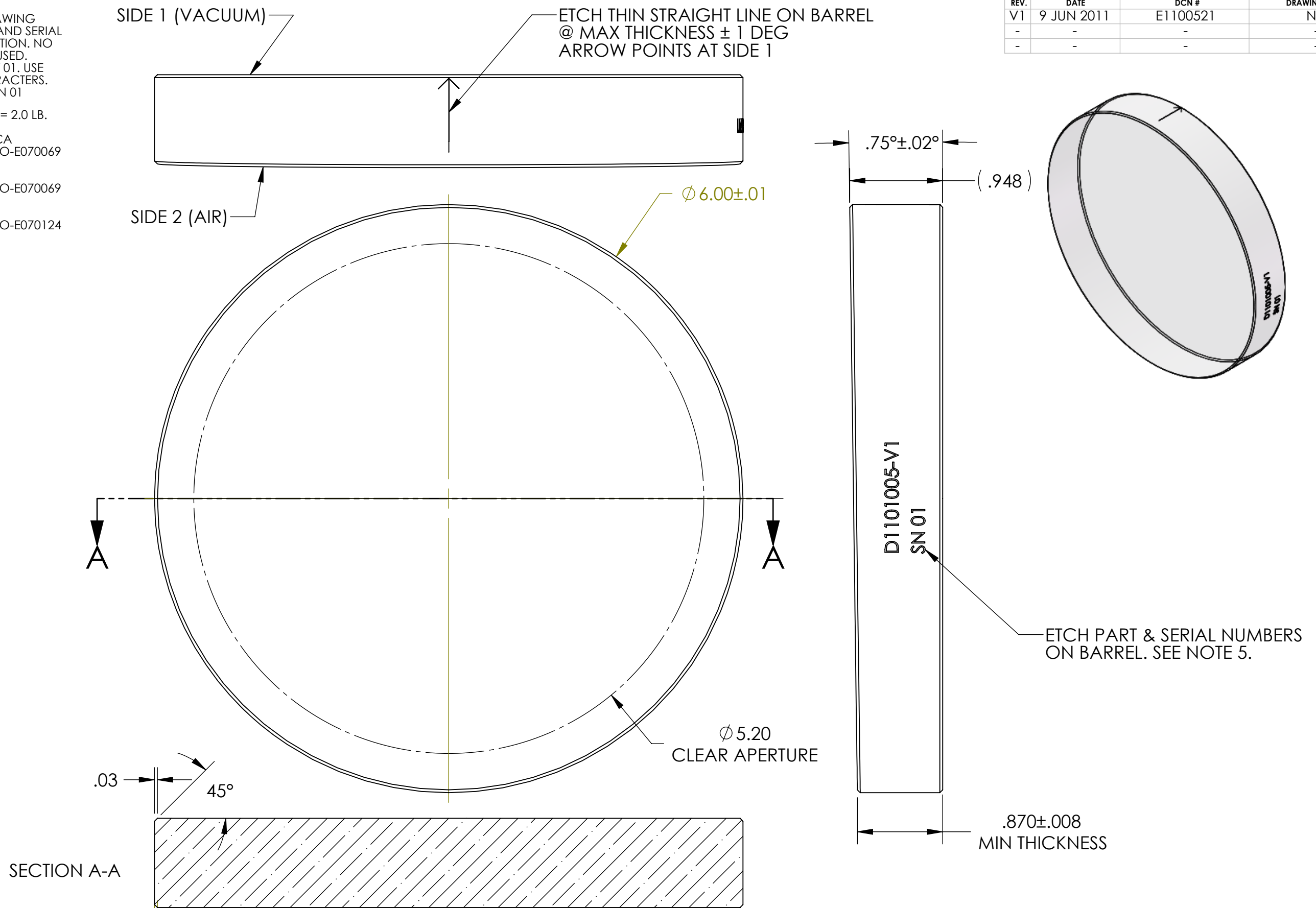


D1101005 allIGO, high quality, wedged, 6in Viewport, Optic, PART PDM REV: X-001, DRAWING PDM REV: X-003

- NOTES CONTINUED:**
- 5. PERMANENTLY MARK DRAWING PART NUMBER, REVISION AND SERIAL NUMBER AT NOTED LOCATION. NO INKS OR DYES ARE TO BE USED. SERIAL NUMBERS START AT 01. USE MINIMUM .12" HIGH CHARACTERS. EXAMPLE: D1101005-V1, SN 01
 - 6. APPROXIMATE WEIGHT = 2.0 LB.
 - 7. MATERIAL IS FUSED SILICA PER SPECIFICATION LIGO-E070069
 - 8. POLISH PLANO/PLANO PER SPECIFICATION LIGO-E070069
 - 9. COATING IS AR/AR PER SPECIFICATION LIGO-E070124

REV.	DATE	DCN #	DRAWING TREE #
V1	9 JUN 2011	E1100521	NA
-	-	-	-
-	-	-	-



NOTES AND TOLERANCES: (UNLESS OTHERWISE SPECIFIED)

DIMENSIONS ARE IN INCHES

TOLERANCES:
 .XX ± .01
 .XXX ± .005
 ANGULAR ± 1.0°

MATERIAL	FUSED SILICA	FINISH	μinch
----------	--------------	--------	-------

CALIFORNIA INSTITUTE OF TECHNOLOGY MASSACHUSETTS INSTITUTE OF TECHNOLOGY	PART NAME		High Quality 6in, wedged Viewport Optic	
	SYSTEM	AOS	SUB-SYSTEM	SLC
DESIGNER	Dennis Coyne	9 Jun 2011	SIZE	DWG. NO.
DRAFTER	Dennis Coyne	27 May 2011	B	D1101005
CHECKER	Mike Smith	27 May 2011	REV.	v1
APPROVAL	SEE DCN		SCALE:	1:2
			PROJECTION:	
			SHEET	1 OF 1