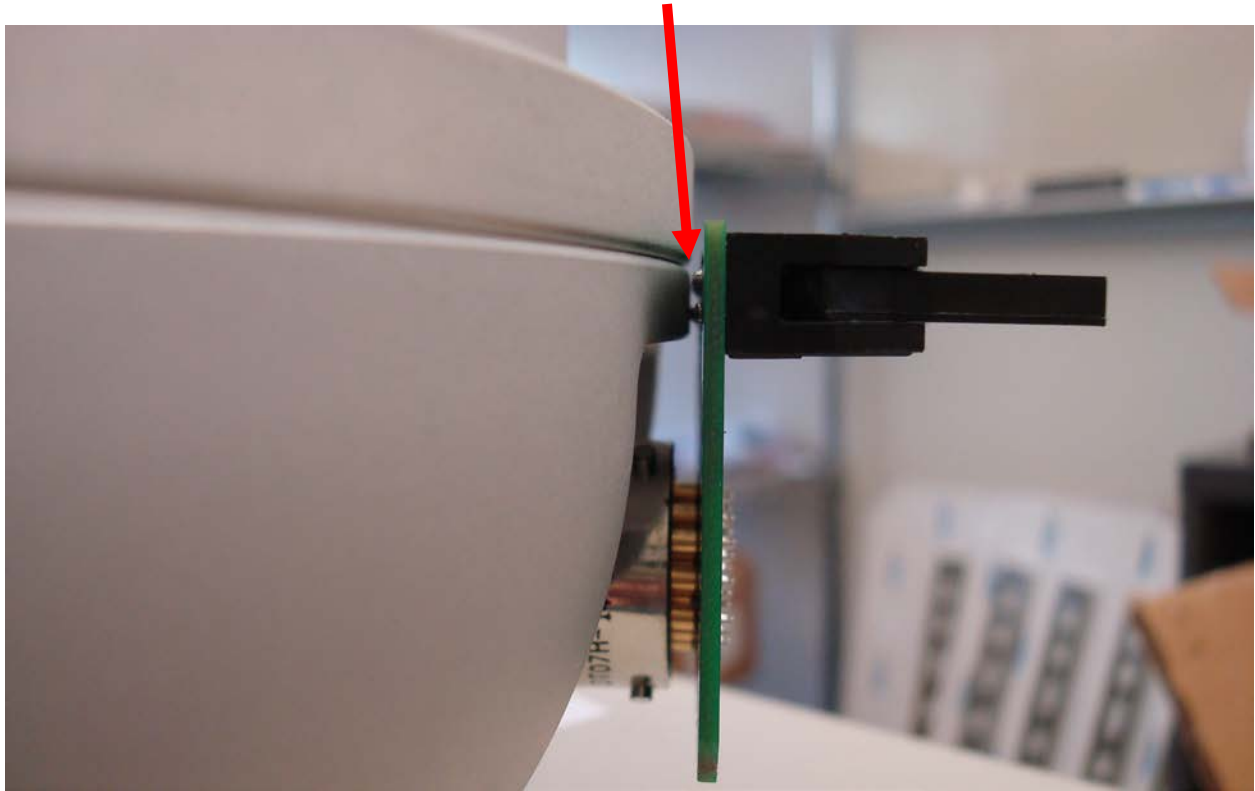
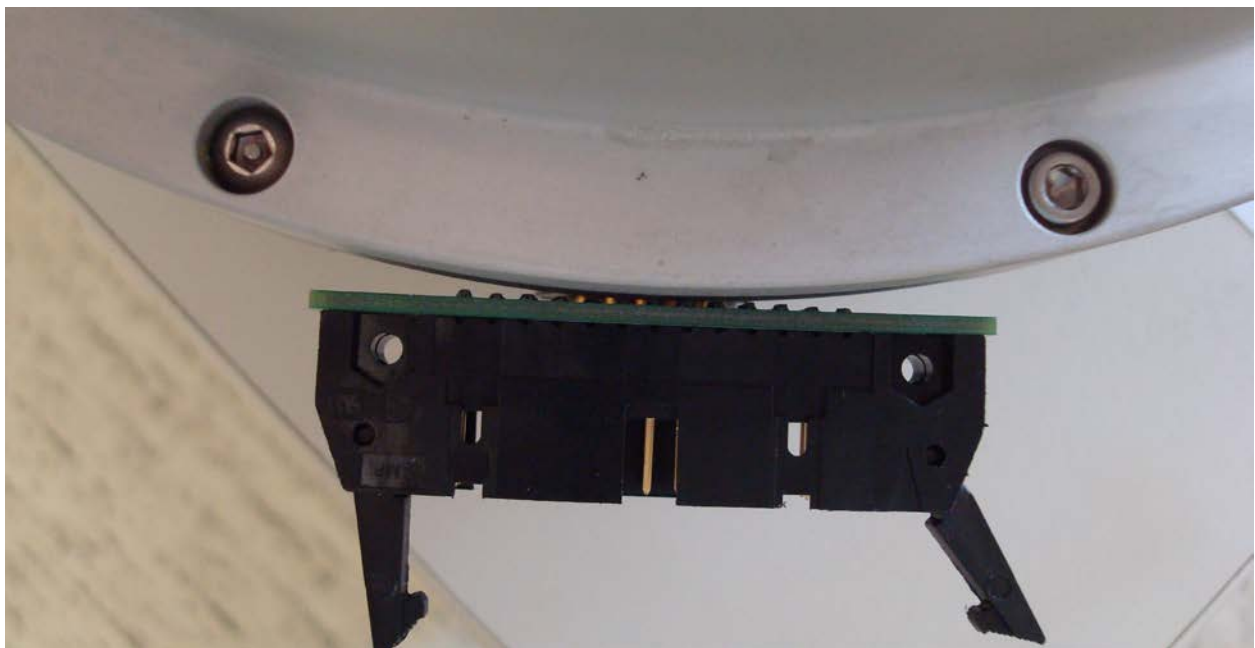


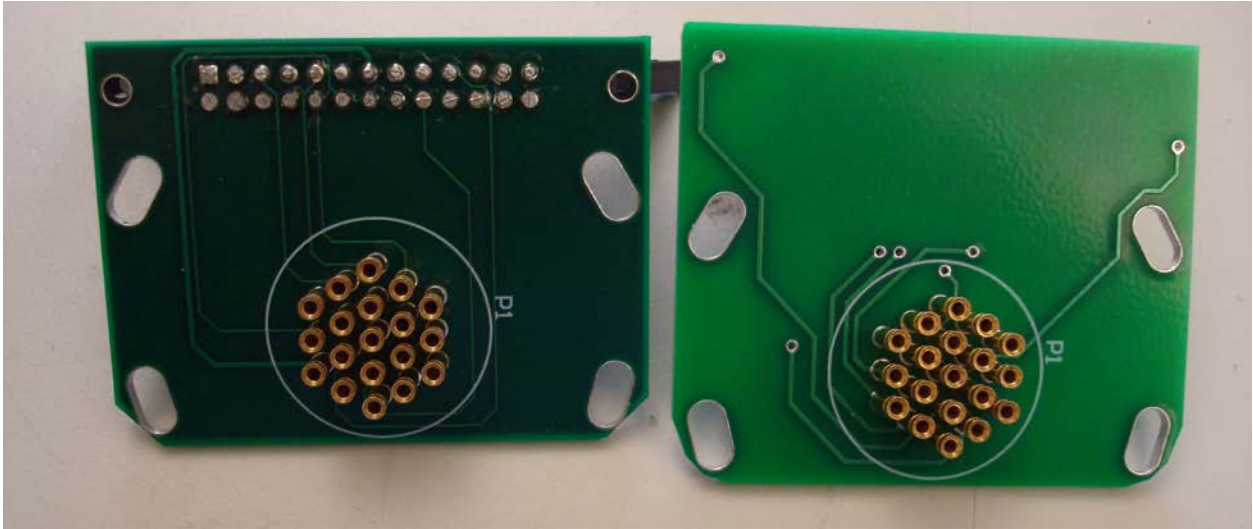
The old connector from the side. It can be seen that, although we have trimmed the pins of the IDC connector, they still touch the enclosure, and would short out.



This is a top view of the same connector board, showing the pins contacting the enclosure.



Here is a picture of the old board (Left), and the new board (Right). The new board uses a SMT Header , so there are no pins to short out. The new board is 1/4" taller than the old one, I hope it doesn't interfere with the fit. The extra height made room for the surface traces for the SMT header.



The new board installed: The screws are on order, which is why they're not installed yet. The holes seem to line up well.

