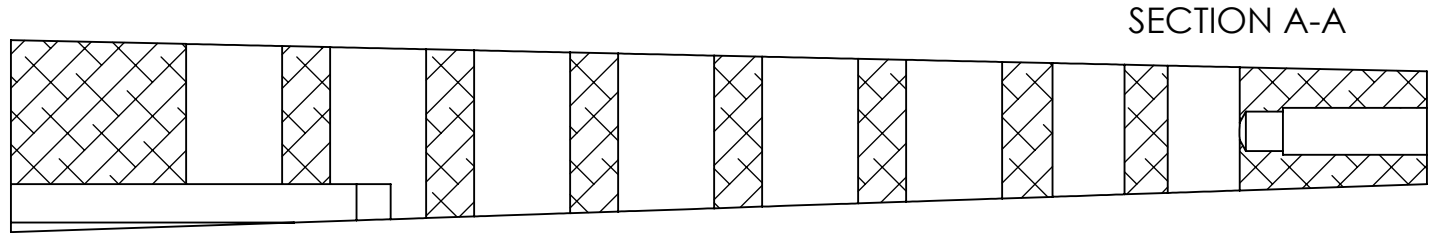


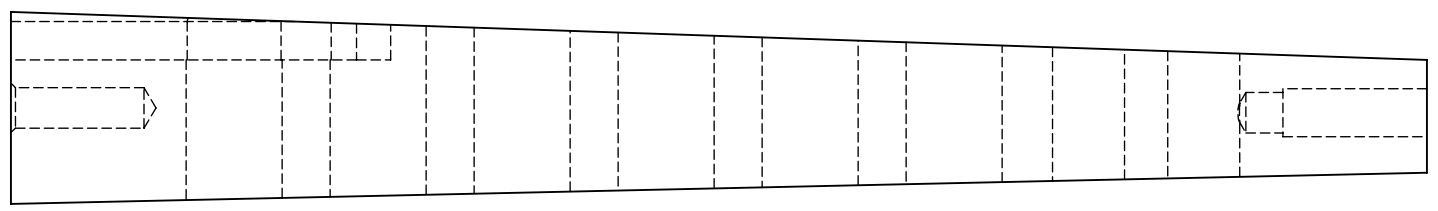
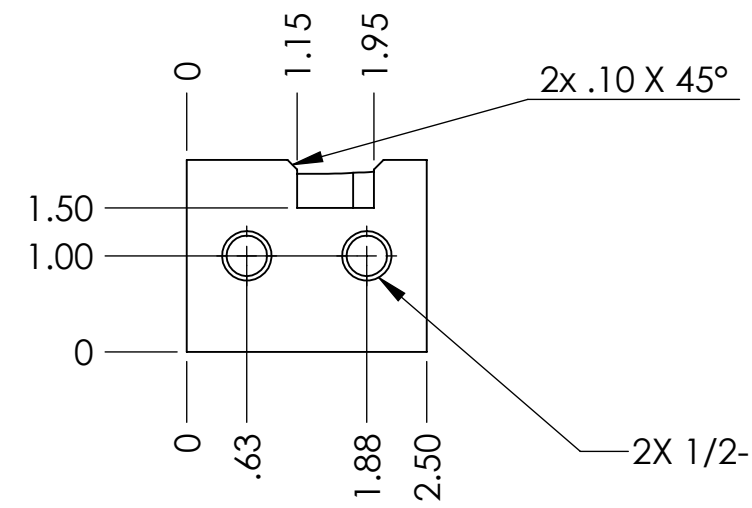
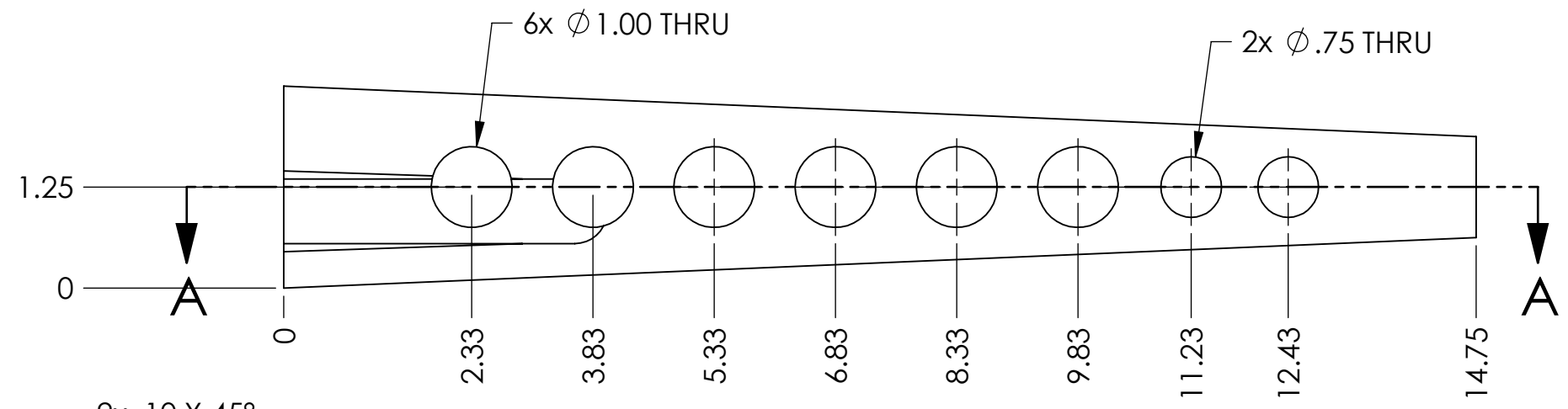
NOTES CONTINUED:
 5. SCRIBE, ENGRAVE (A VIBRATORY TOOL MAY BE USED), LASER MARK OR MECHANICALLY STAMP (NO INKS OR DYES) DRAWING PART NUMBER, REVISION (AND VARIANT OR "TYPE" IF APPLICABLE) ON NOTED SURFACE OF PART FOLLOWED ON THE NEXT LINE WITH A THREE DIGIT SERIAL NUMBER. SERIAL NUMBERS START AT 001 FOR THE FIRST ARTICLE AND PROCEED CONSECUTIVELY. USE MINIMUM 0.12" HIGH CHARACTERS, UNLESS THE SIZE OF THE PART DICTATES SMALLER CHARACTERS. EXAMPLE: DXXXXXX-VY, TYPE-XX, S/N XXX

REV.	DATE	DCN #	DRAWING TREE #
-	-	-	-
-	-	-	-
-	-	-	-

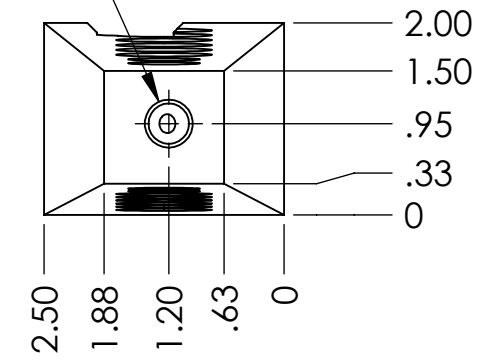


- 6. APPROXIMATE WEIGHT = X.XXX LB.
- 7. MACHINE ALL SURFACES TO REMOVE OXIDES AND MILL FINISH. REFER TO LIGO-E0900364
- 8. ALL PARTS SHALL BE MANUFACTURED IN ACCORDANCE WITH LIGO SPECIFICATION E0900364.

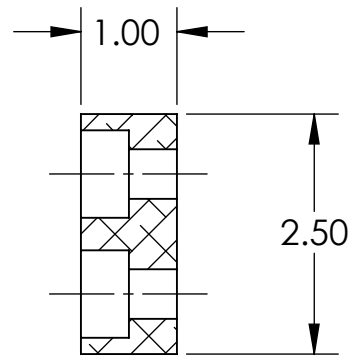
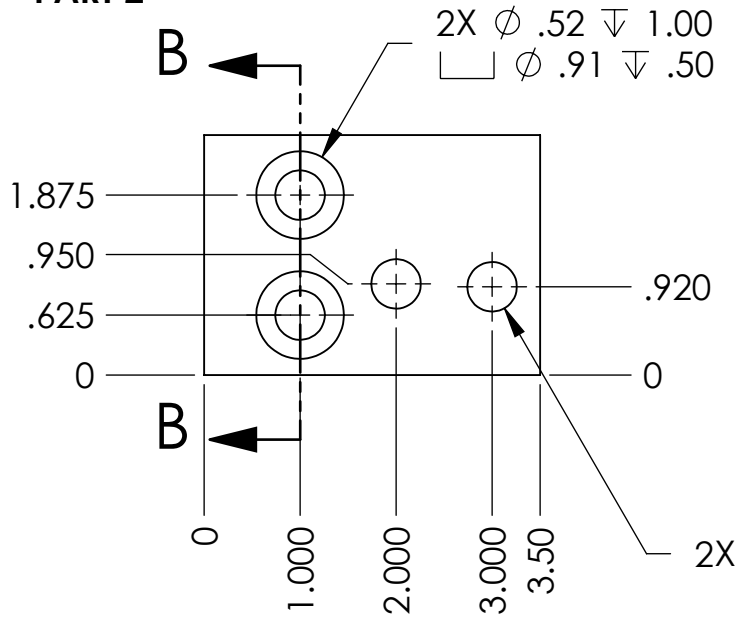
PART1



Ø .42 ∇ 1.89
 1/2-13 UNC -2B ∇ 1.50

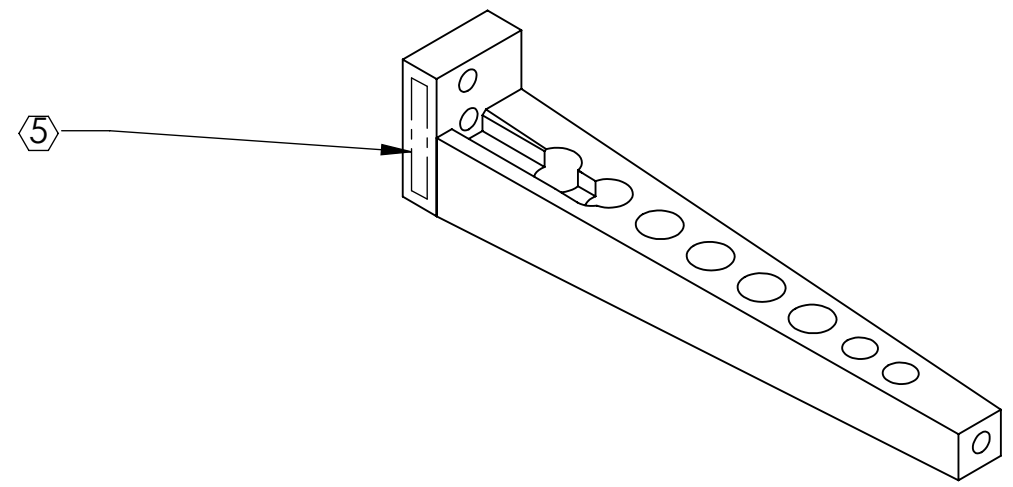


PART 2



SECTION B-B

ASSM



NOTES AND TOLERANCES: (UNLESS OTHERWISE SPECIFIED)

DIMENSIONS ARE IN INCHES
 TOLERANCES:
 .XX \pm .01
 .XXX \pm .005
 ANGULAR \pm 0.5°
 MATERIAL 6061-T6 Al
 FINISH 125 μ inch

LIGO CALIFORNIA INSTITUTE OF TECHNOLOGY
 MASSACHUSETTS INSTITUTE OF TECHNOLOGY
 SYSTEM ADVANCED LIGO
 SUB-SYSTEM SEI
 NEXT ASSY D1100375

PART NAME Unified Plate Flipper Extension, D0902279, BSC-ISI, aLIGO
 DESIGNER sbarnum 18 May 2011
 DRAFTER SBARNUM 31 MAY 2011
 CHECKER
 APPROVAL
 SIZE DWG. NO. B D1100934
 SCALE: 1:2 PROJECTION: SHEET 1 OF 1