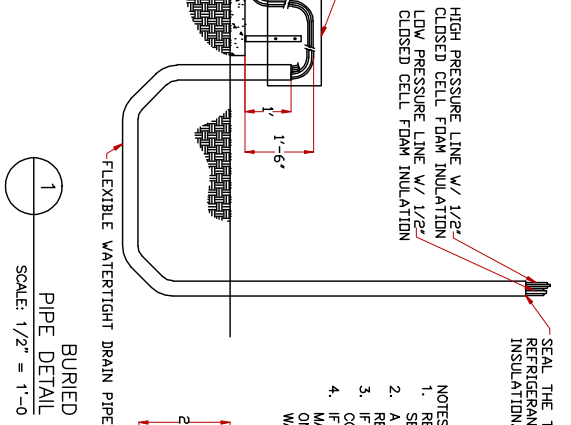


SYMBOL	LOCATION	REFRIGERANT TYPE	COOLING		INDOOR UNIT		FEATURES
			TOTAL CAPACITY (BTU)	MCA (AMPS) SEE NOTE 2	MFR/MODEL	MFR/MODEL	
CU-1	SEE PLAN	R410A	192,000	15/30	480/3	MITSUBISHI PUH-F192YSMU-A	PROVIDE LOW AMBIENT KIT FOR COOLING TO -10°
CU-2	SEE PLAN	R410A	192,000	15/30	480/3	MITSUBISHI PUH-F192YSMU-A	PROVIDE LOW AMBIENT KIT FOR COOLING TO -10°

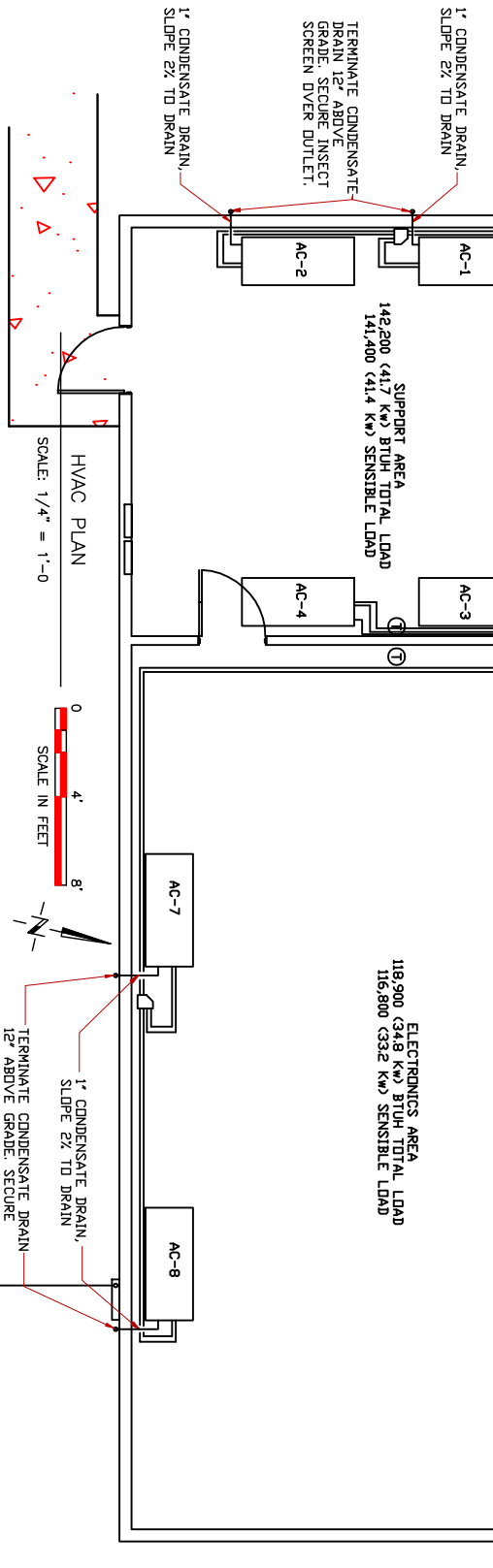
NOTES:
 1. ELECTRICAL POWER BY OWNER. OUTDOOR UNITS REQUIRE 480V, 3PH. INSIDE UNITS REQUIRE 208V, 1 PH.
 2. EACH OUTSIDE UNIT IS A COMBINATION OF TWO UNITS, EACH REQUIRING A SEPARATE ELECTRICAL CONNECTION.
 3. SUPPORT EACH INDOOR UNIT WITH SPRING HANGERS AND RODS, MASON INDUSTRIES SERIES 30N, SIZE X33. THERE ARE FOUR SPRING HANGERS REQUIRED PER UNIT.
 4. MOUNT OUTDOOR UNITS WITH VIBRATION ISOLATION PADS AT BASE.

SYMBOL	ROOM LOCATION	TYPE	COOLING		INDOOR UNIT		MFR/MODEL	FEATURES
			TOTAL CAPACITY (BTU)	SENSIBLE CAPACITY (BTU)	MCA (AMPS)	V/PH		
AC-1	SUPPORT	CLG MOUNT	49,194	37,281	3.43	208/1	MITSUBISHI PEY-P54NMHU-E	THERMOSTAT PAR-21MAA FOR UNITS AC-1 THROUGH 4
AC-2	SUPPORT	CLG MOUNT	49,194	37,281	3.43	208/1	MITSUBISHI PEY-P54NMHU-E	
AC-3	SUPPORT	CLG MOUNT	49,194	37,281	3.43	208/1	MITSUBISHI PEY-P54NMHU-E	
AC-4	SUPPORT	CLG MOUNT	49,194	37,281	3.43	208/1	MITSUBISHI PEY-P54NMHU-E	
AC-5	ELECTRONICS	CLG MOUNT	43,728	32,493	3.38	208/1	MITSUBISHI PEY-P48NMHU-E	THERMOSTAT UNITS AC-5 THROUGH 8
AC-6	ELECTRONICS	CLG MOUNT	43,728	32,493	3.38	208/1	MITSUBISHI PEY-P48NMHU-E	
AC-7	ELECTRONICS	CLG MOUNT	43,728	32,493	3.38	208/1	MITSUBISHI PEY-P48NMHU-E	
AC-8	ELECTRONICS	CLG MOUNT	43,728	32,493	3.38	208/1	MITSUBISHI PEY-P48NMHU-E	



SEAL THE TOP OF THE CASING AROUND THE REFRIGERANT LINES WITH EXPANDING FOAM INSULATION. (TYP)

TERMINATE CONDENSATE DRAIN 12\"/>



LIGO DRAWING D1100814-V2

PRINTED BY: GH on 7/8/2011 11:18 AM
 © 2011 Hibbs Engineering, Inc.
LIGO HANFORD OBSERVATORY
 DRAWING: LIGO- D-1100814v1
HIBBS ENGINEERING, INC.
 KENNEWICK, WASHINGTON
LHO H2 ELECTRONICS BLDG
 HVAC PLAN, DETAILS
 PROJECT NUMBER: CAD FILE: 103503A02.DWG
 DRAWN BY: GLH
 CHECKED BY: []
 DESIGN A/E: [] DESIGN GM: []
 REV No. DATE BY DESCRIPTION APPROVED
 2 7/6/11 GLH MODIFIED ROOM LOCATIONS IN SCHEDULE
 04/11/2011 DATE OF ISSUE