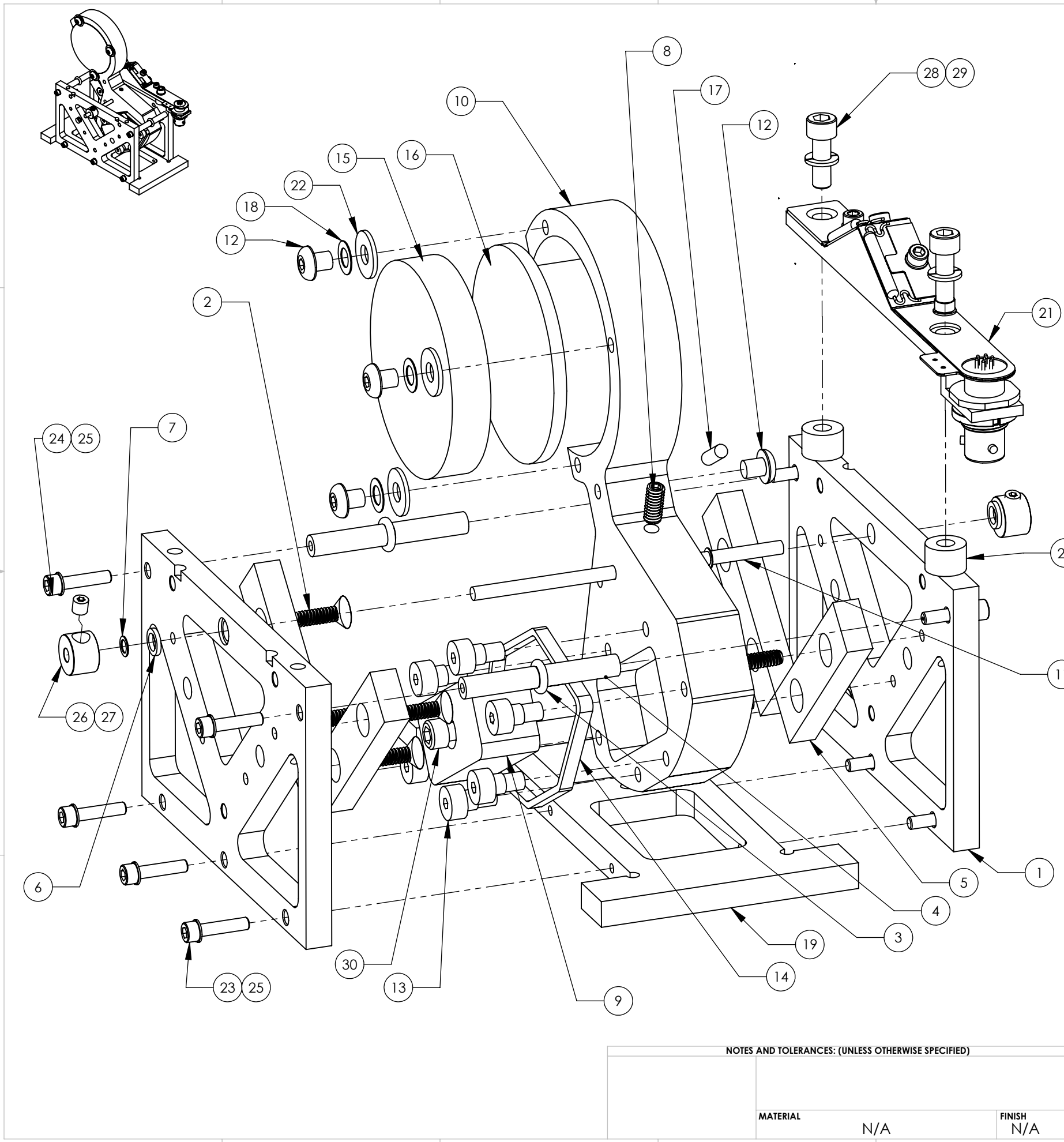


D1100642_ISC_Rotary_Beam_Diverter, PART PDM REV: X-044, DRAWING PDM REV: X-007



REV.	DATE	DCN #	DRAWING TREE #
v8	8/30/2012	E1200796	-
v9	3/1/2013	E1300159	-
-	-	-	-

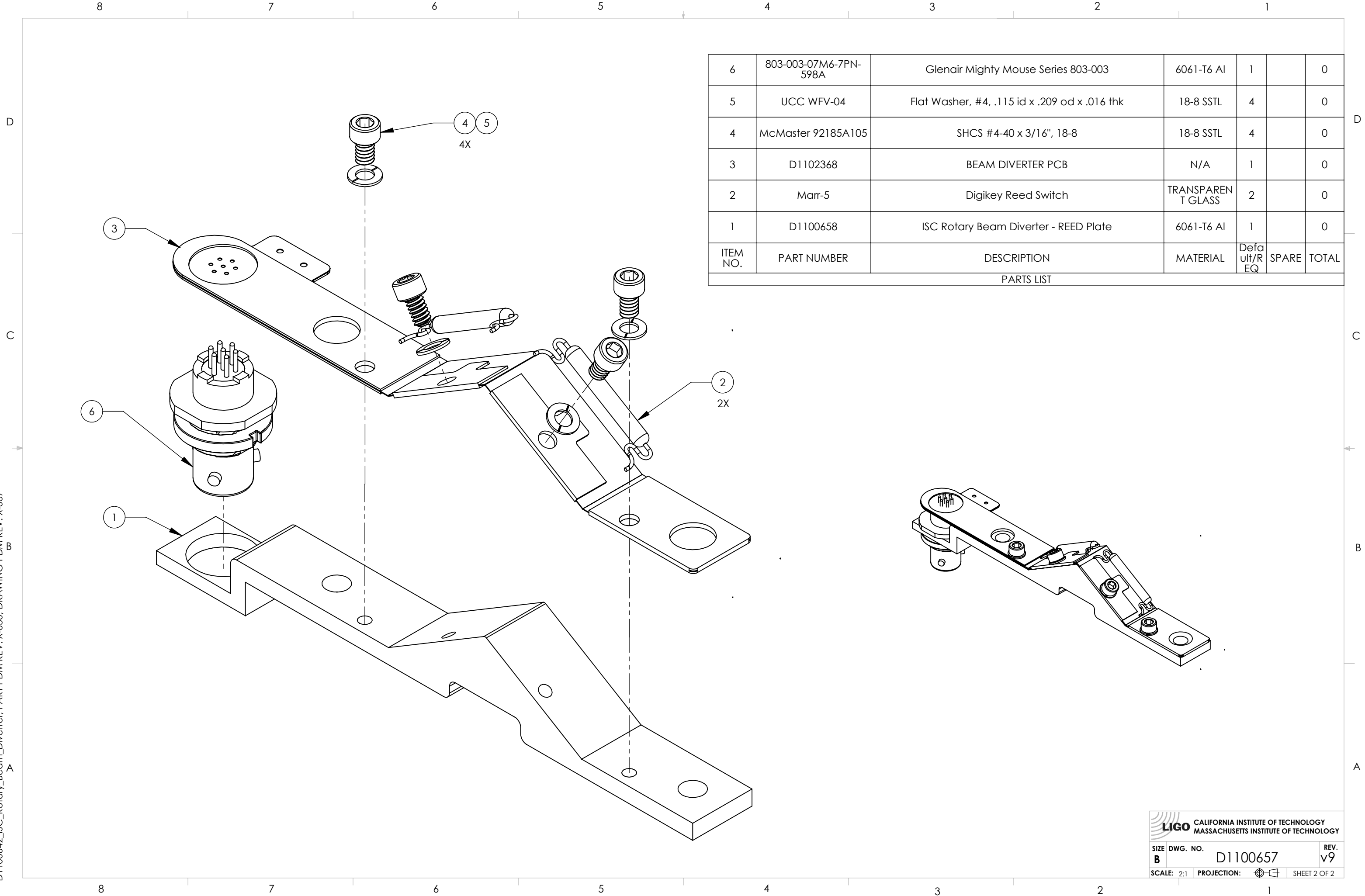
ITEM NO	PART NUMBER	DESCRIPTION	MATERIAL	LEF T/R EQ
30	McMASTER 92200A196	SHCS #8-32 X 0.625	300 SSSL	1
29	UC_COMPONE NTS_WFV-08	Washer Vented, .17 ID X .304 OD X .032 THK #8	18-8 SS	2
28	UCC_C-808-NA	SHCS, # 8-32 X .50" LG. 18-8, Ag, Vented	18-8 SS	2
27	UCC_T-602-NA	SSS Cup Point, #6-32 x 1/8" Ag 18-8	18-8 SSSL	2
26	McMaster 6462K17	Shaft Collar, 1/8" ID, 3/8" OD, 1/4" Wide, 303 SST,	300 SSSL	2
25	UCC WFV-04	Flat Washer, #4, .115 id x .209 od x .016 thk	18-8 SSSL	10
24	UUC_C-408-A	SHCS #4-40 x 1/2" 18-8, Ag, Vented	18-8 SSSL	4
23	McMASTER 92200A110	SHCS #4-40 x 1/2" 300 Series SST	300 SSSL	6
22	McMASTER 95630A238	Flat Washer #8 Screw Size, 7/16" OD, .03"- .07" Thick, PEEK	PEEK	3
21	D1100657	ISC Rotary Beam Diverter - REED Assembly	N/A	1
20	McMASTER_925 10A622	Spacer 3/8" OD, 1/4" Length, for #8 Screw, AL	6061-T6 Al	2
19	D1100646	ISC Rotary Beam Diverter - Base Plate	6061-T6 Al	1
18	99842A111	McMaster #8 Wave Washer	18-8 SSSL	3
17	D26 0p	K&J Magnetics 0.125" Cylinder Magnet, NdFeB	NdFeB	1
16	D1100046	ISC - 2" DIAMETER BLACK GLASS OPTIC	TRANSPARENT GLASS	1
15	See E1100048	Mirror, 2" Dia	Glass	1
14	MWS Industries 32HML	10 Ohm Cu wire coil, 32 AWG, ~100 turns (19 meters)	Copper	1
13	McMaster 92012A201	SHSS #8-32 x 1/8" L, 3/16" OD, Shoulder, 18-8	18-8 SSSL	6
12	McMaster 92949A189	BSHCS #8-32 x 3/16" Button Head	18-8 SSSL	4
11	171204310	Shaft-Vermont Gage 171204310 Custom Rod	304 SSSL	1
10	D1100643	ISC Rotary Beam Diverter - Rotary Holder	6061-T6 Al	1
9	D1100656	ISC Rotary Beam Diverter - Counter Weight	304 SSSL	1
8	McMaster 91979A411	Set Screw, #8-32 x 3/8" 18-8 Cup-Point Vented	18-8 SSSL	1
7	90917A428	McMaster 0.125" Shim Washer	316 SSSL	2
6	22589	Rotary Olive Jewel Bearing, 2.250"+/- .0001 ID, .2500"+/- .0003 OD, .040" +/- .001 THK	Sapphire	2
5	BY084DCS	K&J Countersunk Bar Magnet, nickel coated NdFeB	NdFeB	4
4	D1100910	#4-40 Threaded Spacer Rod	AISI 304	2
3	1201T18	McMaster 3/16" I.D. O-Ring : AS568A Dash Number 008	FLUOROELASTOMER	2
2	9221A148	#6-32 X 0.50" Flat Head Cap Screw	18-8 SSSL	8
1	D1100645	ISC Rotary Beam Diverter - Magnet Keeper	416 SSSL	2

NOTES AND TOLERANCES: (UNLESS OTHERWISE SPECIFIED)

MATERIAL	N/A	FINISH	N/A
----------	-----	--------	-----

CALIFORNIA INSTITUTE OF TECHNOLOGY MASSACHUSETTS INSTITUTE OF TECHNOLOGY		PART NAME		ISC Rotary Beam Diverter	
SYSTEM	ADVANCED LIGO	SUB-SYSTEM	ISC	DESIGNER	S. WALDMAN 11 MAR 2011
DRAFTER	S. FOLEY 9 NOV 2011	CHECKER	SBARNUM 1 MAR 2013	APPROVAL	PFRIISCHEL 1 MAR 2013
NEXT ASSY	HAMS 1 & 6		SIZE DWG. NO.	B D1100642	
			SCALE:	1:2	PROJECTION:
			SHEET 1 OF 2		REV. v9

D1100642_ISC_Rotary_Beam_Diverter, PART PDM REV: X-030, DRAWING PDM REV: X-007



ITEM NO.	PART NUMBER	DESCRIPTION	MATERIAL	Defa ult/R EQ	SPARE	TOTAL
6	803-003-07M6-7PN-598A	Glenair Mighty Mouse Series 803-003	6061-T6 Al	1		0
5	UCC WFV-04	Flat Washer, #4, .115 id x .209 od x .016 thk	18-8 SSSL	4		0
4	McMaster 92185A105	SHCS #4-40 x 3/16", 18-8	18-8 SSSL	4		0
3	D1102368	BEAM DIVERTER PCB	N/A	1		0
2	Marr-5	Digikey Reed Switch	TRANSPAREN T GLASS	2		0
1	D1100658	ISC Rotary Beam Diverter - REED Plate	6061-T6 Al	1		0
PARTS LIST						

LIGO CALIFORNIA INSTITUTE OF TECHNOLOGY
MASSACHUSETTS INSTITUTE OF TECHNOLOGY

SIZE	DWG. NO.	REV.
B	D1100657	v9
SCALE: 2:1	PROJECTION:	SHEET 2 OF 2