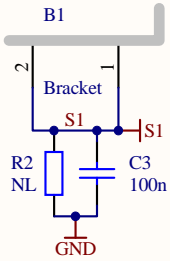
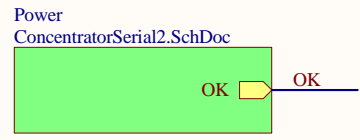
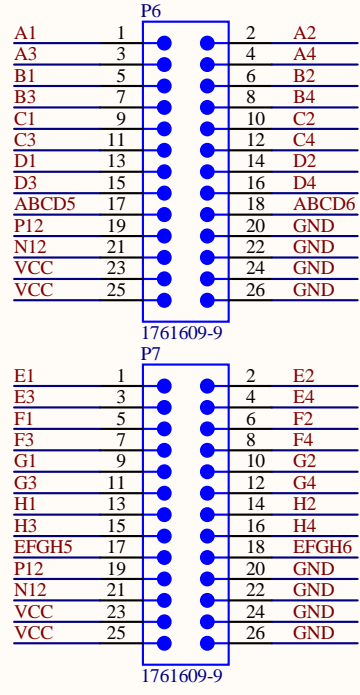
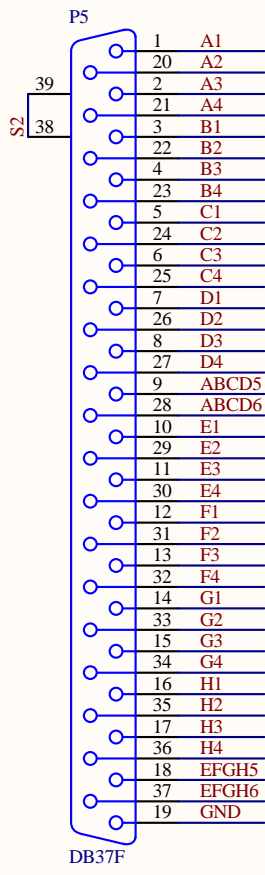
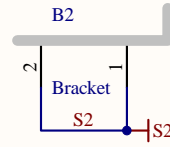


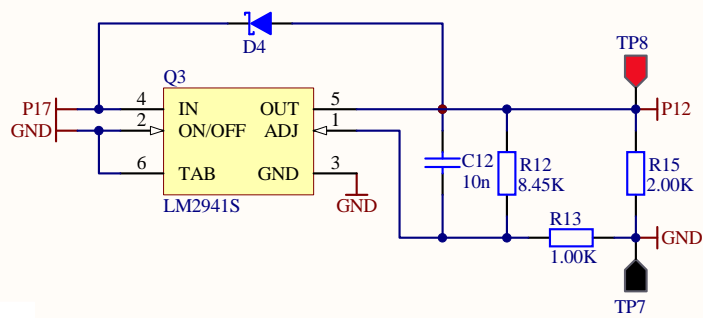
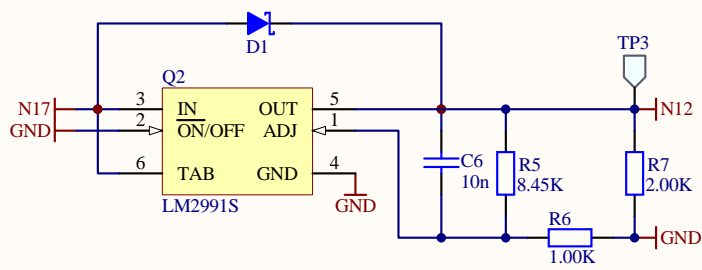
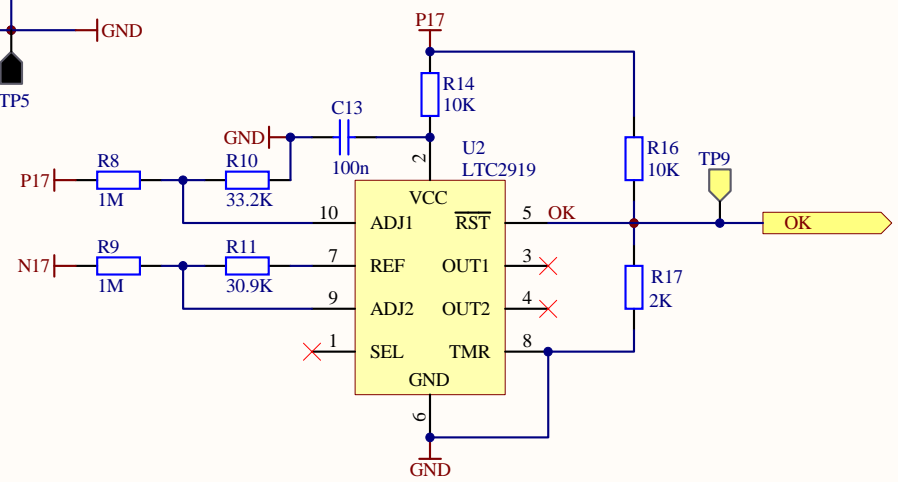
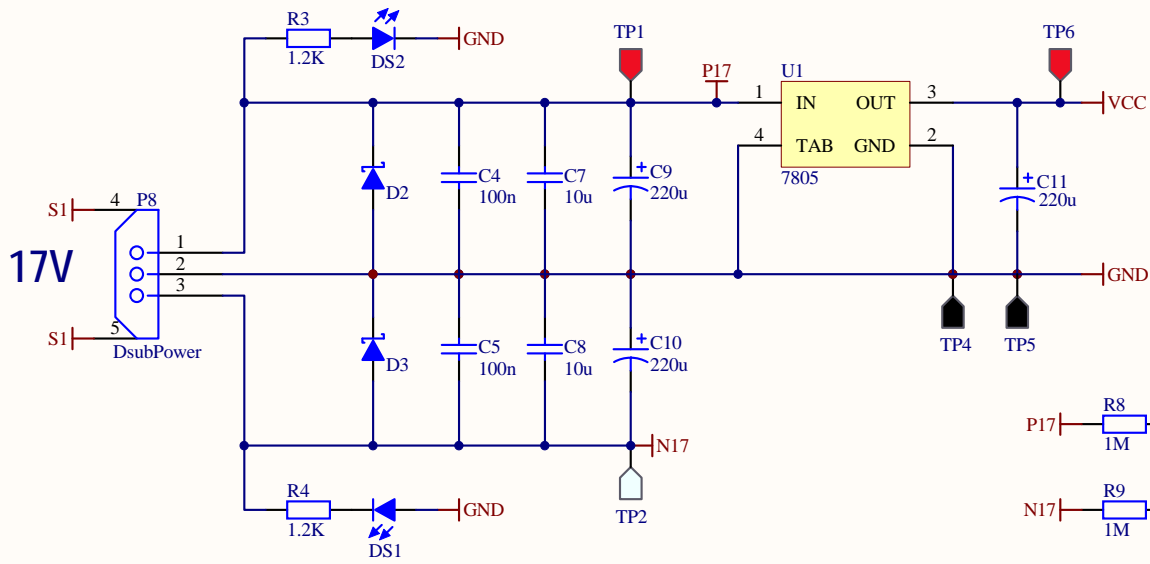
- H1 #4 screw, 3/8"
- H2 #4 screw, 3/8"
- McMaster-Carr 90272A108
- H3 #4 lock washer
- H4 #4 lock washer
- McMaster-Carr 91113A005
- H5 #4 nut
- H6 #4 nut
- McMaster-Carr 90480A005



- H7 #4 screw, 3/8"
- H8 #4 screw, 3/8"
- H9 #4 lock washer
- H10 #4 lock washer
- H11 #4 nut
- H12 #4 nut



Title		
Controls Concentrator RF Amp		
Size	Number	Revision
A	D1100633	1
Date:	4/11/2011	Sheet 1 of 3
File:	C:\Users\...\ConcentratorSerial1.SchDoc	Drawn By: Daniel Sigg



Undervoltage monitors:
OK low indicates a supply fault.

Positive: $V_{Trip} = (R3/R7 + 1) / 2$
Negative: $V_{Trip} = (1 - R4/R8) / 2$

P17: $V_{Trip} = +15.6V$
N17: $V_{Trip} = -15.7V$

Title		
Controls Concentrator RF Amp		
Size	Number	Revision
A	D1100633	1
Date:	4/11/2011	Sheet 2 of 3
File:	C:\Users\...\ConcentratorSerial2.SchDoc	Drawn By: Daniel Sigg