

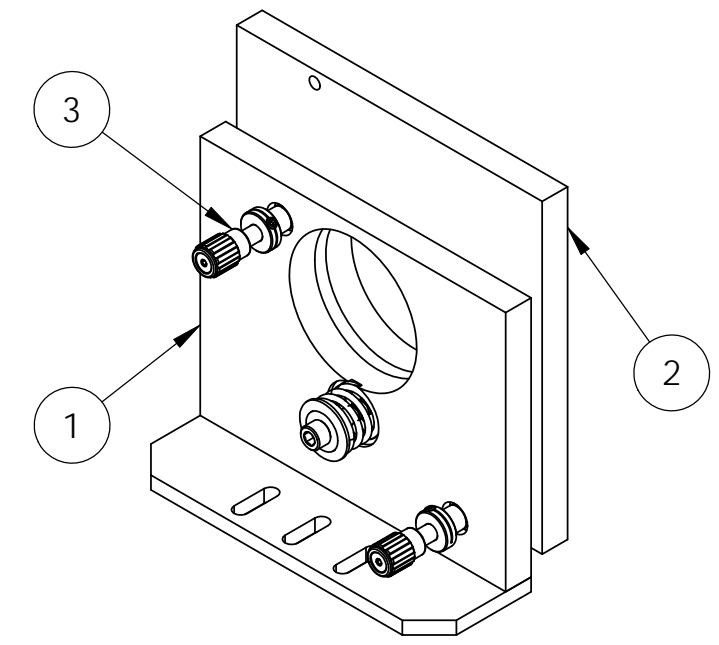
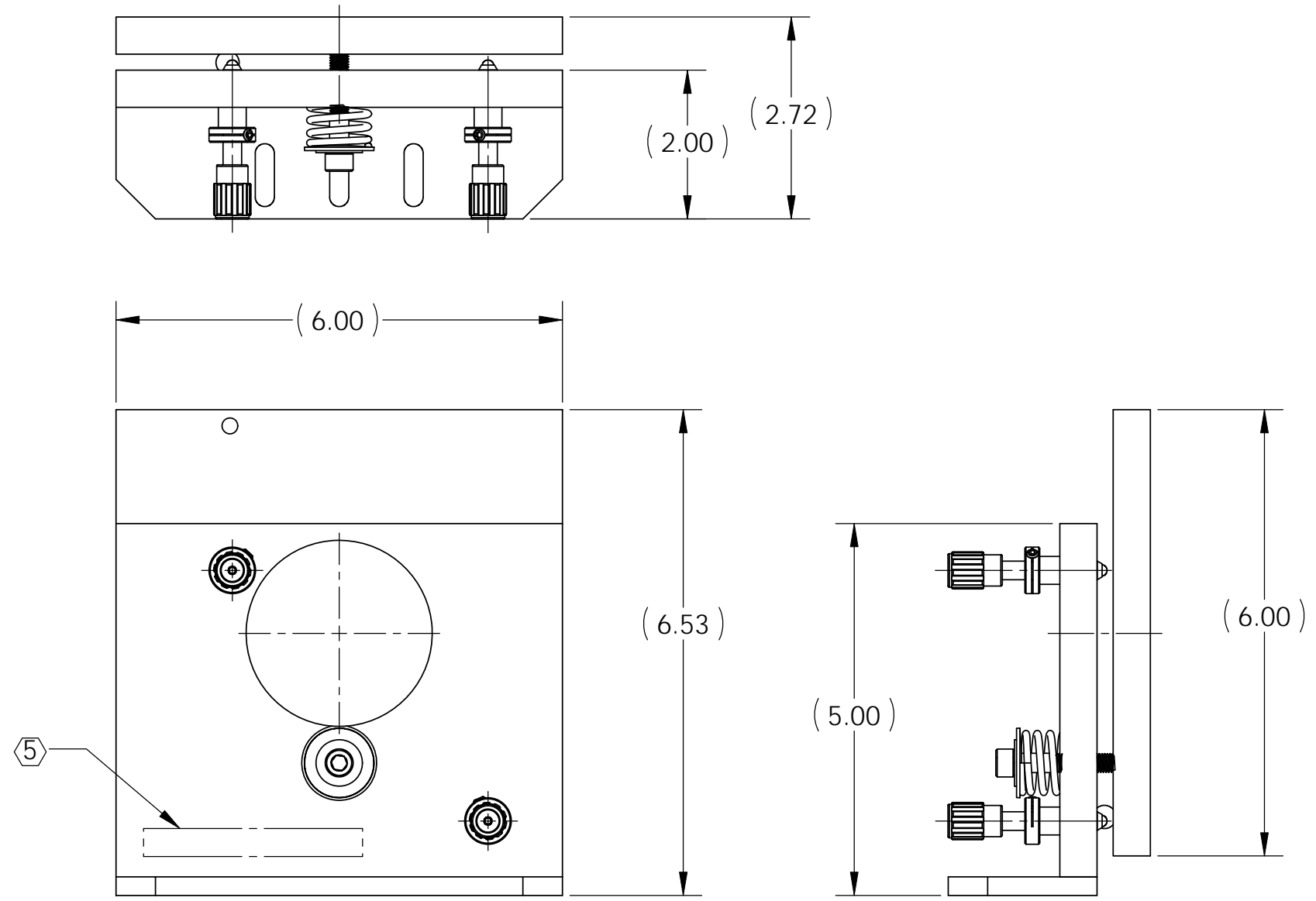
D1100559_aLIGO TMS TELE ALIGNMENT 6 INCH MIRROR MOUNT ASSY MODIFIED, PART PDM REV: X-001, DRAWING PDM REV: X-000

8 7 6 5 4 3 2 1

NOTES CONTINUED:
 ⑤ SCRIBE, ENGRAVE (A VIBRATORY TOOL MAY BE USED), LASER MARK OR MECHANICALLY STAMP (NO INKS OR DYES) DRAWING PART NUMBER, REVISION (AND VARIANT OR "TYPE" IF APPLICABLE) ON NOTED SURFACE OF PART FOLLOWED ON THE NEXT LINE WITH A THREE DIGIT SERIAL NUMBER. SERIAL NUMBERS START AT 001 FOR THE FIRST ARTICLE AND PROCEED CONSECUTIVELY. USE MINIMUM 0.12" HIGH CHARACTERS, UNLESS THE SIZE OF THE PART DICTATES SMALLER CHARACTERS. EXAMPLE: DXXXXXX-VY, TYPE-XX, S/N XXX

REV.	DATE	DCN #	DRAWING TREE #
-	-	-	-
-	-	-	-
-	-	-	-

6. APPROXIMATE WEIGHT = 2.93 LBS.



ITEM NO.	PART NUMBER	DESCRIPTION	MATERIAL	REQ	SPARE	TOTAL
3	AJS100-0.5	NEWPORT, HIGH PRECISION SMALL KNOB ADJUSTMENT SCREW, 12.7 mm TRAVEL, 100 TPI, SIDE LOCK	SSTL	2		2
2	D1100560	aLIGO TMS TELE ALIGNMENT 6 INCH MIRROR MOUNT BASE PLATE	6061-T6 Al	1		1
1	D1100561	aLIGO TMS TELE ALIGNMENT 6 INCH MIRROR MOUNT SPRING PLATE	6061-T6 Al	1		1

PARTS LIST

DIMENSIONS ARE IN INCHES TOLERANCES: .XX ± .02 .XXX ± .005 ANGULAR ± 1.0°		NOTES AND TOLERANCES: (UNLESS OTHERWISE SPECIFIED) 1. INTERPRET DRAWING PER ASME Y14.5-1994. 2. REMOVE ALL SHARP EDGES, .005-.015, FOR MACHINED PARTS. ROUND ALL EDGES APPROXIMATELY R.02 FOR SHEET METAL PARTS. 3. DO NOT SCALE FROM DRAWINGS. 4. ALL MACHINING FLUIDS MUST BE FULLY SYNTHETIC, FULLY WATER SOLUBLE AND FREE OF SULFUR, SILICONE, AND CHLORINE.		LIGO CALIFORNIA INSTITUTE OF TECHNOLOGY MASSACHUSETTS INSTITUTE OF TECHNOLOGY SYSTEM: ADVANCED LIGO SUB-SYSTEM: AOS NEXT ASSY:		PART NAME: aLIGO TMS ALIGNMENT 6 INCH MIRROR MOUNT ASSY MODIFIED DESIGNER: J. TERRAZAS 30 MAR 2011 DRAFTER: J. TERRAZAS 30 MAR 2011 CHECKER: APPROVAL:				SIZE: B DWG. NO.: D1100559 SCALE: 1:2 PROJECTION:		REV. SHEET 1 OF 1
---	--	--	--	--	--	--	--	--	--	--	--	-------------------

8 7 6 5 4 3 2 1