

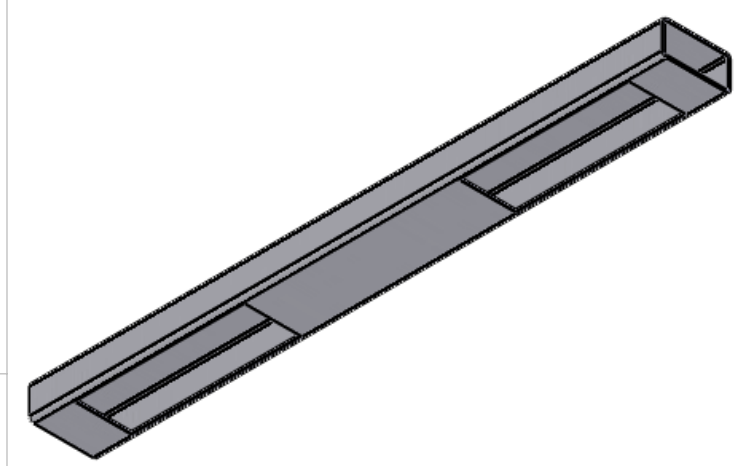
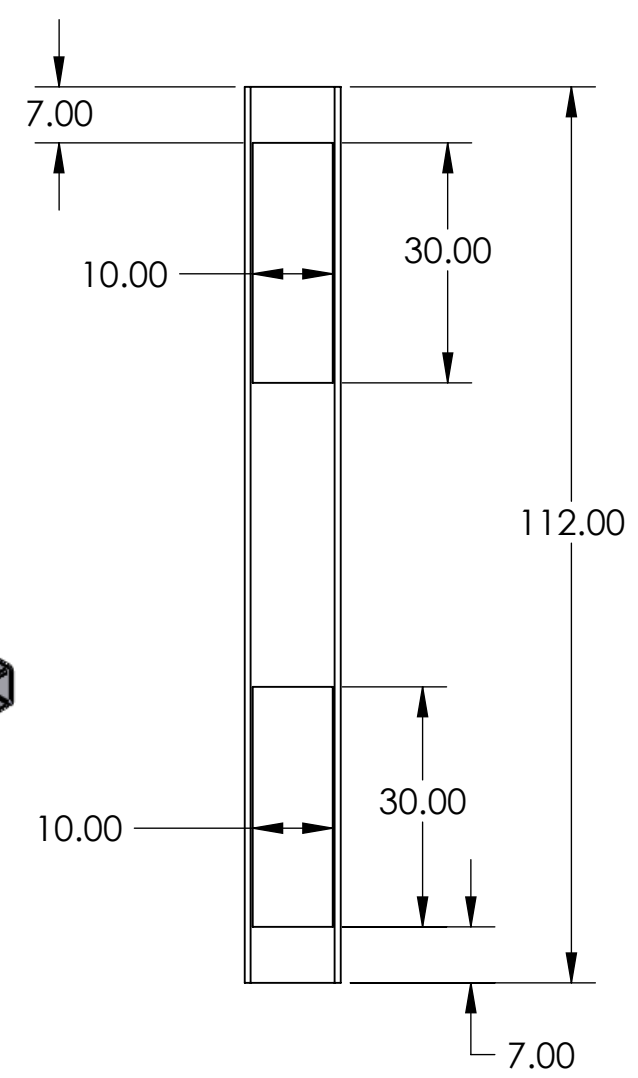
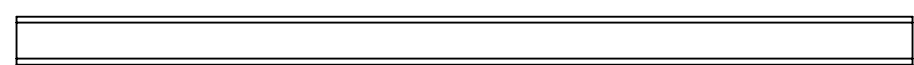
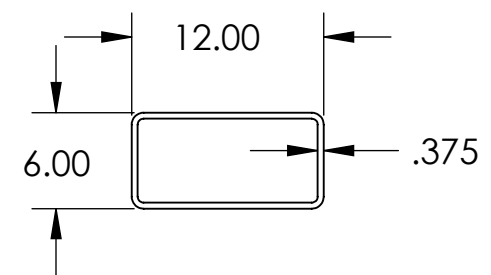
8 7 6 5 4 3 2 1

**Notes Continued:**

5. Use standard rectangular or fabricated tube.

REV.	DATE	DCN #	DRAWING TREE #
-	-	-	-
-	-	-	-
-	-	-	-

D  
C  
B  
A



D  
C  
B  
A

D1100542- lifting rectangular beam, PART PDM REV: X-000, DRAWING PDM REV: X-000

8 7 6 5 4 3 2 1

NOTES AND TOLERANCES: (UNLESS OTHERWISE SPECIFIED)				LIGO CALIFORNIA INSTITUTE OF TECHNOLOGY MASSACHUSETTS INSTITUTE OF TECHNOLOGY		PART NAME	
DIMENSIONS ARE IN		1. INTERPRET DRAWING PER ASME Y14.5-1994. 2. REMOVE ALL SHARP EDGES. 3. DO NOT SCALE FROM DRAWING. 4. ALL MACHINING FLUIDS MUST BE FULLY SYNTHETIC, FULLY WATER SOLUBLE AND FREE OF SULFUR, SILICONE, AND CHLORINE.		SYSTEM		rectangular beam	
TOLERANCES:		MATERIAL		SUB-SYSTEM		DESIGNER	
.XX ±		Plain Carbon Steel		BSC ISI Storage Container		S Foley 3/24/2011	
.XXX ±		FINISH		NEXT ASSY		SIZE DWG. NO.	
ANGULAR ± °		- μinch		D1002682		B D1100542	
						REV.	
						v1	
						SCALE: 1:24 PROJECTION: SHEET 1 OF 1	