

D1101096_aLIGO TMS OPT TABLE-TELE-SUPPORT BRIDGE CONNECTION, PART PDM REV: X-004, DRAWING PDM REV: X-000

NOTES CONTINUED:

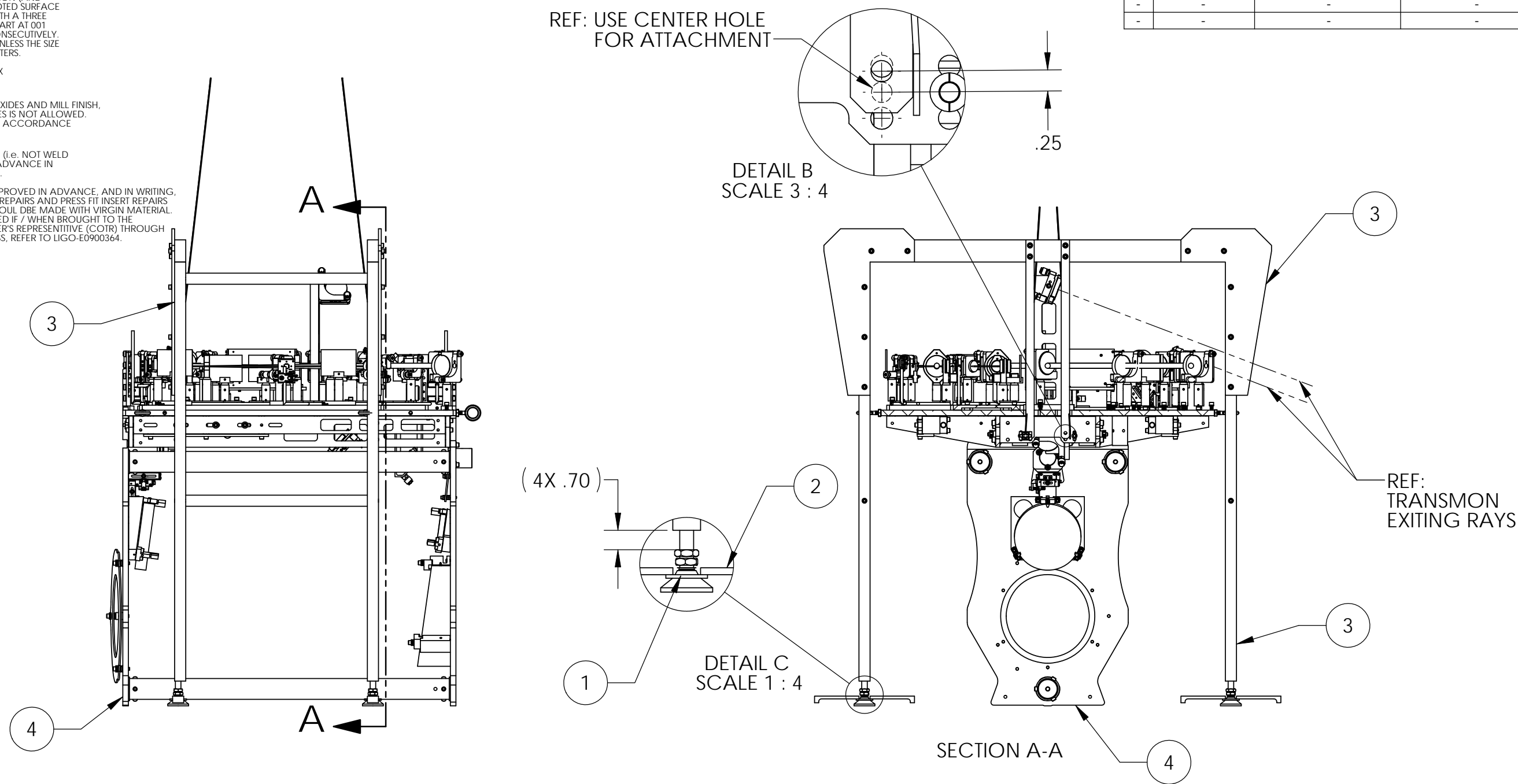
5. SCRIBE, ENGRAVE, OR MECHANICALLY STAMP (NO INKS OR DYES) DRAWING PART NUMBER, REVISION (AND VARIANT OR "TYPE" IF APPLICABLE) ON NOTED SURFACE OF PART FOLLOWED ON THE NEXT LINE WITH A THREE DIGIT SERIAL NUMBER. SERIAL NUMBERS START AT 001 FOR THE FIRST ARTICLE AND PROCEED CONSECUTIVELY. USE MINIMUM 0.12" HIGH CHARACTERS, UNLESS THE SIZE OF THE PART DICTATES SMALLER CHARACTERS. A VIBRATORY TOOL MAY BE USED.
EXAMPLE: DXXXXXX-VY, TYPE-XX, S/N XXX

6. APPROXIMATE WEIGHT = X.XXX LB.
7. MACHINE ALL SURFACES TO REMOVE OXIDES AND MILL FINISH. USE OF ABRASIVE REMOVAL TECHNIQUES IS NOT ALLOWED.
8. ALL PARTS SHALL BE MANUFACTURED IN ACCORDANCE WITH LIGO SPECIFICATION E0900364.

9. ALL MATERIAL IS TO BE VIRGIN MATERIAL (i.e. NOT WELD REPAIRS OR PLUGS UNLESS APPROVED IN ADVANCE IN WRITING BY LIGO, REFER TO LIGO-E0900364.

10. NO REPAIRS SHALL BE MADE UNLESS APPROVED IN ADVANCE, AND IN WRITING, BY LIGO LABORATORY. IN GENERAL WELD REPAIRS AND PRESS FIT INSERT REPAIRS ARE NEVER ACCEPTABLE. THE MATERIAL SHOULD BE MADE WITH VIRGIN MATERIAL. SPECIAL CIRCUMSTANCES CAN BE REVIEWED IF / WHEN BROUGHT TO THE ATTENTION OF LIGO CONTRACTING OFFICER'S REPRESENTATIVE (COTR) THROUGH A MATERIAL REVIEW BOARD (MRB) PROCESS, REFER TO LIGO-E0900364.

REV.	DATE	DCN #	DRAWING TREE #
v1	6/9/2011	D1100531-v1	-
-	-	-	-
-	-	-	-



4	D1002460	ALIGO TMS TELESCOPE ASSEM	1
3	D1100531	aLIGO TMS OPTICAL TABLE SUPPORT BRIDGE ASSY	1
2	LOS DOG CLAMP	LOS DOG CLAMP	8
1	98126A849	(McMASTER-CARR), WASHER, 1" ID X 1.5 OD x .12 T	4
ITEM NO.	PART NUMBER	DESCRIPTION	QTY.

NOTES AND TOLERANCES: (UNLESS OTHERWISE SPECIFIED)				LIGO CALIFORNIA INSTITUTE OF TECHNOLOGY MASSACHUSETTS INSTITUTE OF TECHNOLOGY		PART NAME	
DIMENSIONS ARE IN INCHES		1. INTERPRET DRAWING PER ASME Y14.5-1994. 2. REMOVE ALL SHARP EDGES, R.02 MIN. 3. DO NOT SCALE FROM DRAWING. 4. ALL MACHINING FLUIDS MUST BE FULLY SYNTHETIC, FULLY WATER SOLUBLE AND FREE OF SULFUR, SILICONE, AND CHLORINE.		ADVANCED LIGO		aLIGO TMS OPT TABLE TELE SUPPORT BRIDGE CONNECTION	
TOLERANCES: .XX ± .01 .XXX ± .005		MATERIAL N/A		SUB-SYSTEM AOS		DESIGNER J. TERRAZAS 24 MAR 2011	
ANGULAR ± 1.0°		FINISH N/A μinch		NEXT ASSY TOOLING		DRAFTER J. TERRAZAS 24 MAR 2011	
						SIZE DWG. NO. B D1101096	
						CHECKER	
						APPROVAL	
						SCALE: 1:10 PROJECTION: SHEET 1 OF 1	