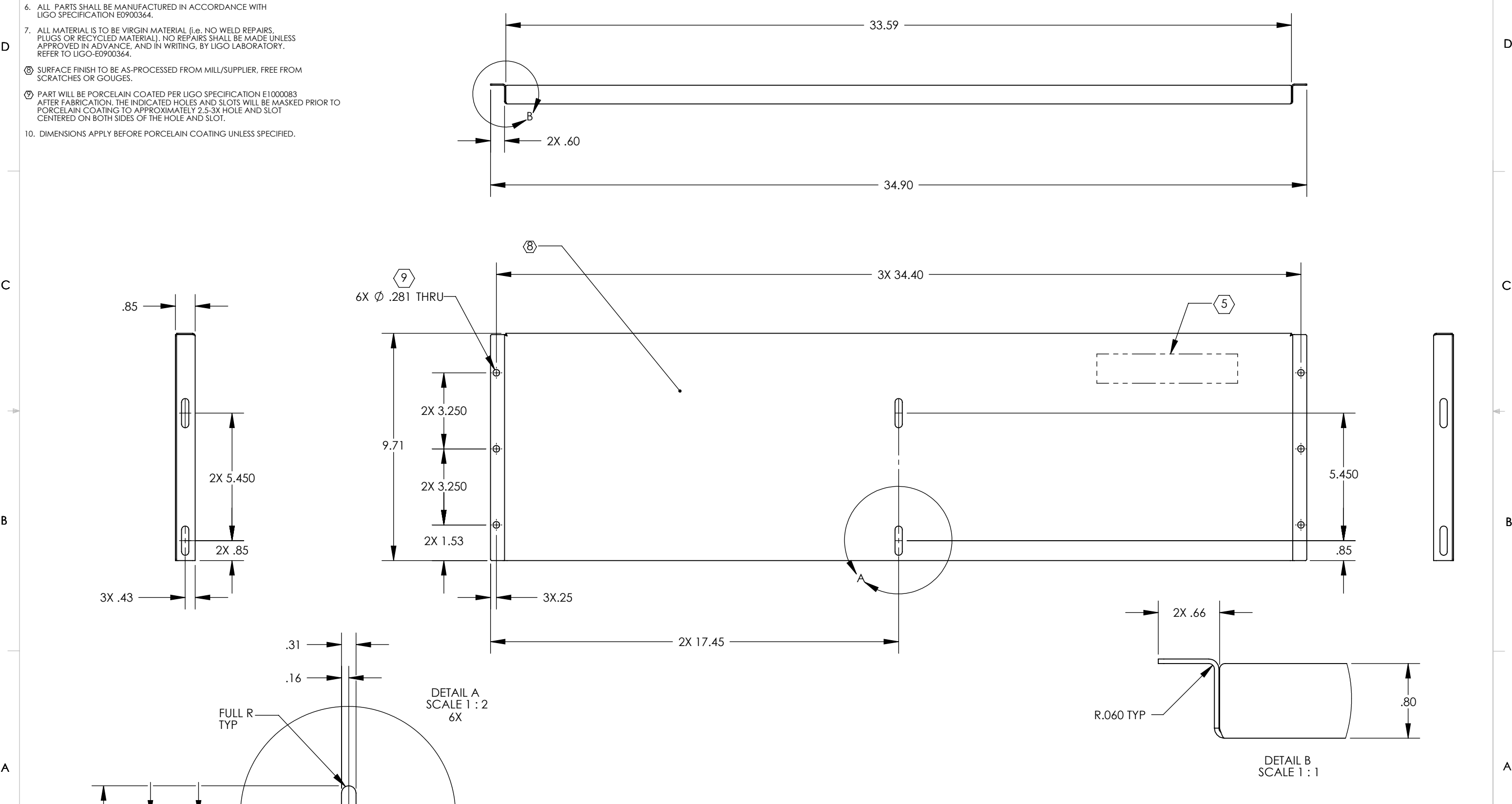


D1100458\_AdlIGO\_AOS\_SLC\_ACB Bottom Extender, PART PDM REV: X-003, DRAWING PDM REV: X-004

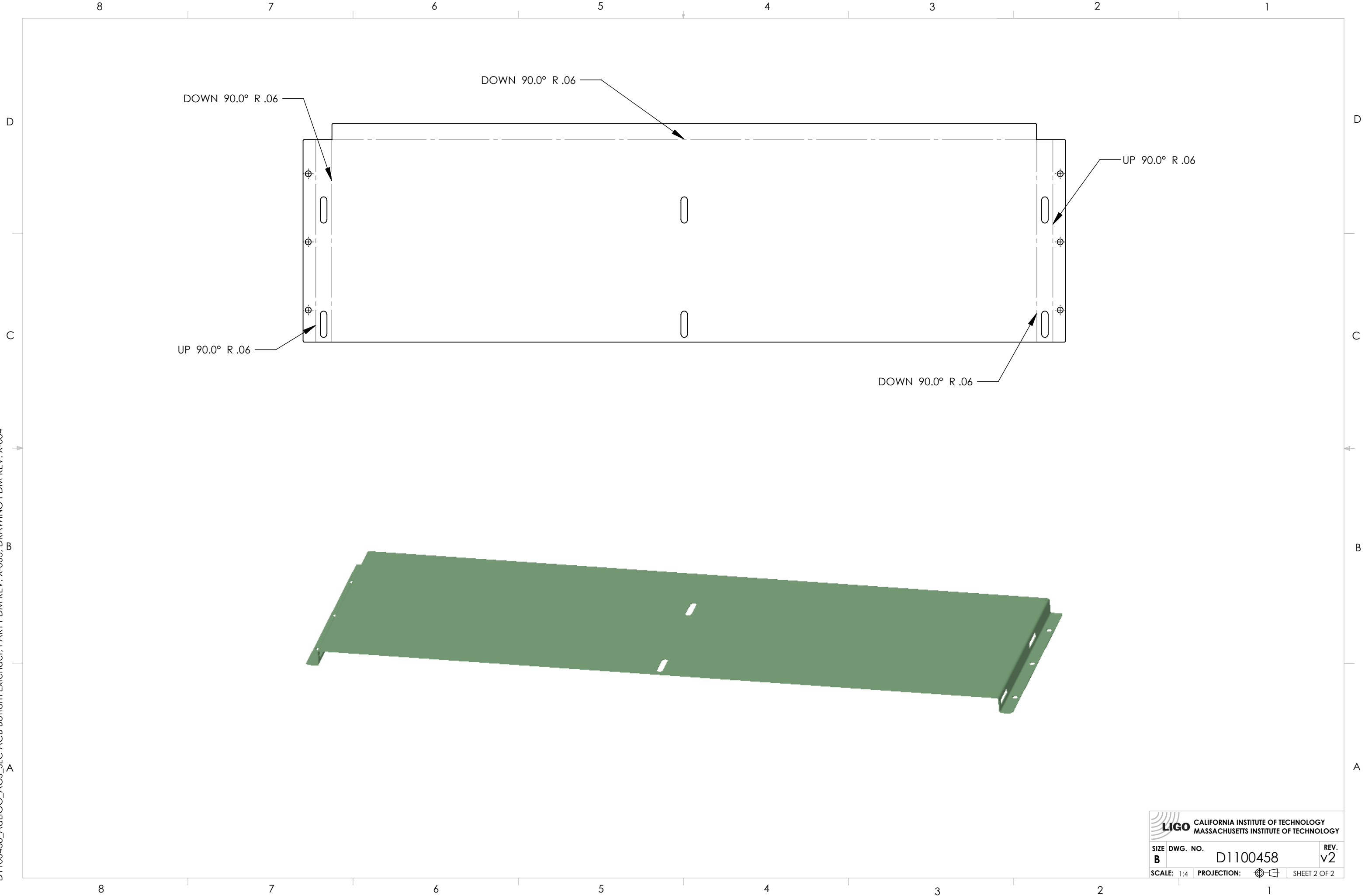
- NOTES CONTINUED:**
- 5. MECHANICALLY STAMP (NO INKS OR DYES) PART NUMBER, REVISION AND SERIAL NUMBER .20 DEEP WITH MINIMUM CHARACTER HEIGHT .156 APPROXIMATELY WHERE SHOWN. SERIAL NUMBER WILL START AT 001 AND PROCEED CONSECUTIVELY. EXAMPLE: D100XXX-V1 S/N 001
  - 6. ALL PARTS SHALL BE MANUFACTURED IN ACCORDANCE WITH LIGO SPECIFICATION E0900364.
  - 7. ALL MATERIAL IS TO BE VIRGIN MATERIAL (i.e. NO WELD REPAIRS, PLUGS OR RECYCLED MATERIAL). NO REPAIRS SHALL BE MADE UNLESS APPROVED IN ADVANCE, AND IN WRITING, BY LIGO LABORATORY. REFER TO LIGO-E0900364.
  - 8. SURFACE FINISH TO BE AS-PROCESSED FROM MILL/SUPPLIER, FREE FROM SCRATCHES OR GOUGES.
  - 9. PART WILL BE PORCELAIN COATED PER LIGO SPECIFICATION E1000083 AFTER FABRICATION. THE INDICATED HOLES AND SLOTS WILL BE MASKED PRIOR TO PORCELAIN COATING TO APPROXIMATELY 2.5-3X HOLE AND SLOT CENTERED ON BOTH SIDES OF THE HOLE AND SLOT.
  - 10. DIMENSIONS APPLY BEFORE PORCELAIN COATING UNLESS SPECIFIED.

REV.	DATE	DCN #	DRAWING TREE #
v1	13 MAR 2011	-	-
v1	25 MAR 2011	E1100216	-
-	-	-	-



NOTES AND TOLERANCES: (UNLESS OTHERWISE SPECIFIED)				LIGO CALIFORNIA INSTITUTE OF TECHNOLOGY MASSACHUSETTS INSTITUTE OF TECHNOLOGY		PART NAME	
DIMENSIONS ARE IN INCHES TOLERANCES: .XX ± .03 .XXX ± .015 ANGULAR ± 1.0°				1. INTERPRET DRAWING PER ASME Y14.5-1994. 2. REMOVE ALL SHARP EDGES, .005-.015, FOR MACHINED PARTS. ROUND ALL EDGES APPROXIMATELY R.02 FOR SHEET METAL PARTS. 3. DO NOT SCALE FROM DRAWING. 4. ALL MACHINING FLUIDS MUST BE FULLY SYNTHETIC, FULLY WATER SOLUBLE AND FREE OF SULFUR, SILICONE, AND CHLORINE.		<b>SLC ACB BOTTOM EXTENDER</b>	
<b>MATERIAL</b> 18 GA ENAMEL STEEL A424		<b>FINISH</b> 		<b>SYSTEM</b> ADVANCED LIGO		<b>SUB-SYSTEM</b> AOS	
<b>NEXT ASSY</b> D1100359		<b>DESIGNER</b> N. Nguyen 17 Feb 2011		<b>DRFTER</b> N. KILPATRICK 13 MAR 2011		<b>SIZE DWG. NO.</b> <b>B D1100458</b>	
		<b>CHECKER</b> APPROVAL		<b>REV.</b> v2		<b>SCALE:</b> 1:4 <b>PROJECTION:</b> <b>SHEET 1 OF 2</b>	

D1100458\_AcLIGO\_AOS\_SLC\_ACB Bottom Extender, PART PDM REV: X-003, DRAWING PDM REV: X-004



 CALIFORNIA INSTITUTE OF TECHNOLOGY MASSACHUSETTS INSTITUTE OF TECHNOLOGY	
SIZE <b>B</b>	DWG. NO. D1100458
SCALE: 1:4	PROJECTION:  SHEET 2 OF 2
REV. v2	