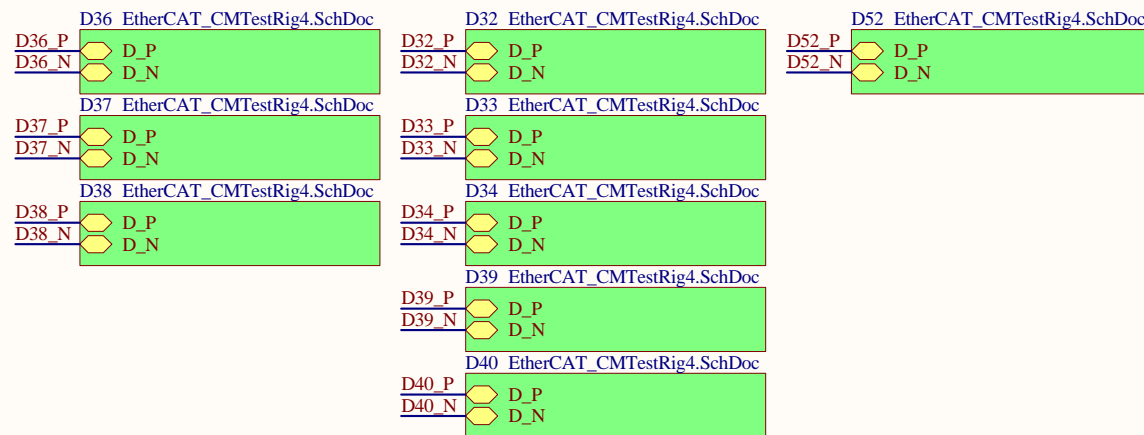
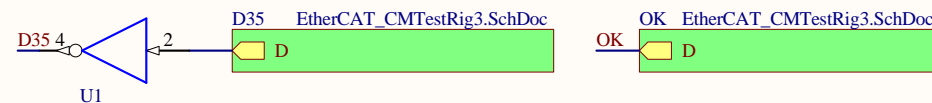


H1	Handle, 3"	E1	BNC lock washer	E10	BNC nut	PN2	Front Panel
H2	Handle, 3"	E2	BNC lock washer	E11	BNC nut	LIGO	D1100466-v1
Mouser		E3	BNC lock washer	E12	BNC nut	PN3	Rear Panel
534-9109		E4	BNC lock washer	E13	BNC nut	LIGO	D1100467-v1
H3	Ferrule	E5	BNC lock washer	E14	BNC nut		
H4	Ferrule	E6	BNC lock washer	E15	BNC nut	PN4	DB37 cable
H5	Ferrule	E7	BNC lock washer	E16	BNC nut	Newark	05M6813
H6	Ferrule	E8	BNC lock washer	E17	BNC nut	PN5	IDC header
Mouser		E9	BNC lock washer	E18	BNC nut	PN6	IDC header
534-9121							
M1	#6-32 3/8" flat	Newark	78M7215	Newark	78M7214	PN7	Jack screw
M2	#6-32 3/8" flat	PN9	Banana jack	PN10	Banana jack		
M3	#6-32 3/8" flat	Newark	39F1574	Newark	39F1575	PN8	Jack screw
M4	#6-32 3/8" flat						
McMaster-Carr						Newark	80K5431
91099A215		H17	Standoff F-F	M5	M4-8mm, flat	M11	M4-8mm, flat
H7	Standoff M-F	H18	Standoff F-F	M6	M4-8mm, flat	M12	M4-8mm, flat
H8	Standoff M-F	H19	Standoff F-F	M7	M4-8mm, flat	M13	M4-8mm, flat
H9	Standoff M-F	H20	Standoff F-F	M8	M4-8mm, flat	M14	M4-8mm, flat
H10	Standoff M-F	H21	Standoff F-F	M9	M4-8mm, flat	M15	M4-8mm, flat
H11	Standoff M-F	H22	Standoff F-F	M10	M4-8mm, flat	M16	M4-8mm, flat
H12	Standoff M-F						
H13	Standoff M-F	Newark	56K3039			McMaster-Carr	91420A218
H14	Standoff M-F						
H15	Standoff M-F						
H16	Standoff M-F						
Newark							
56K3066							



Digital Inputs:

D[5.. 0]: Gain slider input 1
D[11.. 6]: Gain slider input 2
D[12] : Input 1 enable
D[13] : Input 2 enable
D[14] : Output 1 switch
D[16..15]: Number of boost stages
D[17] : Common path compensation enable
D[18] : Common path excitation enable
D[19] : Common path option enable
D[20] : Polarity slow path
D[21] : Common filter enable
D[22] : Fast path enable
D[23] : Fast path polarity
D[24] : Slow path option enable
D[25] : Slow path bypass enable
D[26] : Slow output offset +5V fixed
D[27] : Slow output offset enable
D[28] : Slow path compensation enable
D[29] : Slow path boost enable
D[30] : Slow path filter enable
D[31] : Fast path limiter enable
D[46..41]: Gain slider fast path
D[47] : Split path excitation enable
D[48] : Fast path option enable
D[49] : Excitation into slow path
D[50] : Polarity input 1
D[51] : Polarity input 2
LE : Latch enable

Digital Outputs:

D[35] : Fast path limits reached
OK : Voltages are within range

Analog Inputs:

D[36] : Common path offset adjust
D[37] : Slow path offset adjust
D[38] : Slow path output offset

Analog Outputs:

D[32] : Input monitor
D[33] : Monitor at split
D[34] : Fast monitor
D[39] : Slow path feedback monitor
D[40] : Slow monitor

Spares:

D[52] : Not used

Title		
EtherCAT - Common Mode Server Tester		
Size	Number	Revision
B	D1100436	1
Date:	3/24/2011	Sheet 1 of 4
File:	C:\Users\...\EtherCAT_CMTestRig1.SchDpdDrawn By: Daniel Sigg	

1

2

3

4

A

A

B

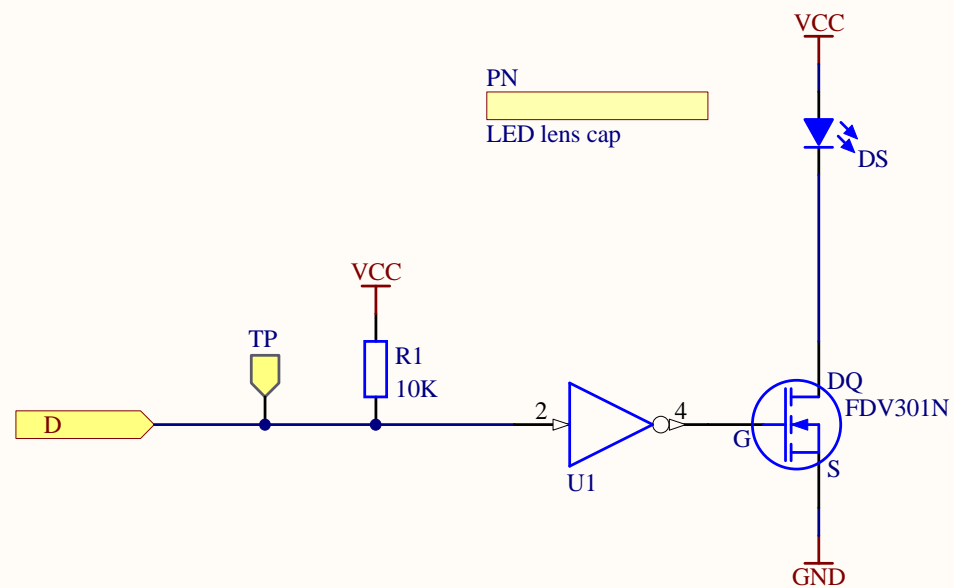
B

C

C

D

D



Title		
EtherCAT - Common Mode Server Tester		
Size	Number	Revision
A	D1100436	1
Date:	3/24/2011	Sheet 2 of 4
File:	C:\Users\...\EtherCAT_CMTestRig2.SchDoc	Drawn By: Daniel Sigg

1

2

3

4

1

2

3

4

A

A

B

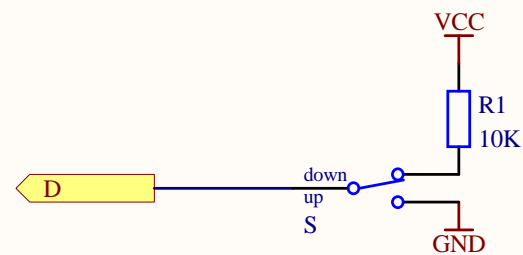
B

C

C

D

D



Title		
EtherCAT - Common Mode Server Tester		
Size	Number	Revision
A	D1100436	1
Date:	3/24/2011	Sheet 2 of 4
File:	C:\Users\...\EtherCAT_CMTestRig3.SchDoc Drawn By: Daniel Sigg	

1

2

3

4

1

2

3

4

A

A

B

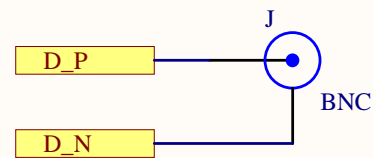
B

C

C

D

D



Title		EtherCAT - Common Mode Server Tester	
Size	Number	Revision	
A	D1100436	1	
Date:	3/24/2011	Sheet 4 of 4	
File:	C:\Users\...\EtherCAT_CMTestRig4.SchDoc	Drawn By: Daniel Sigg	

1

2

3

4