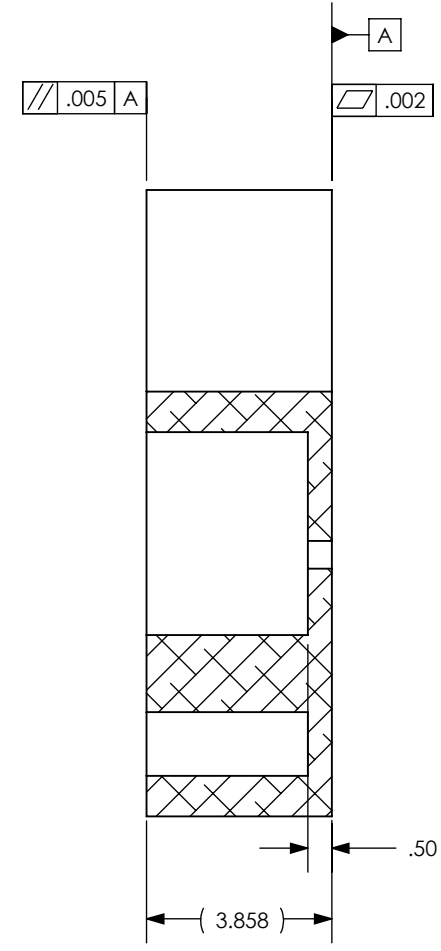
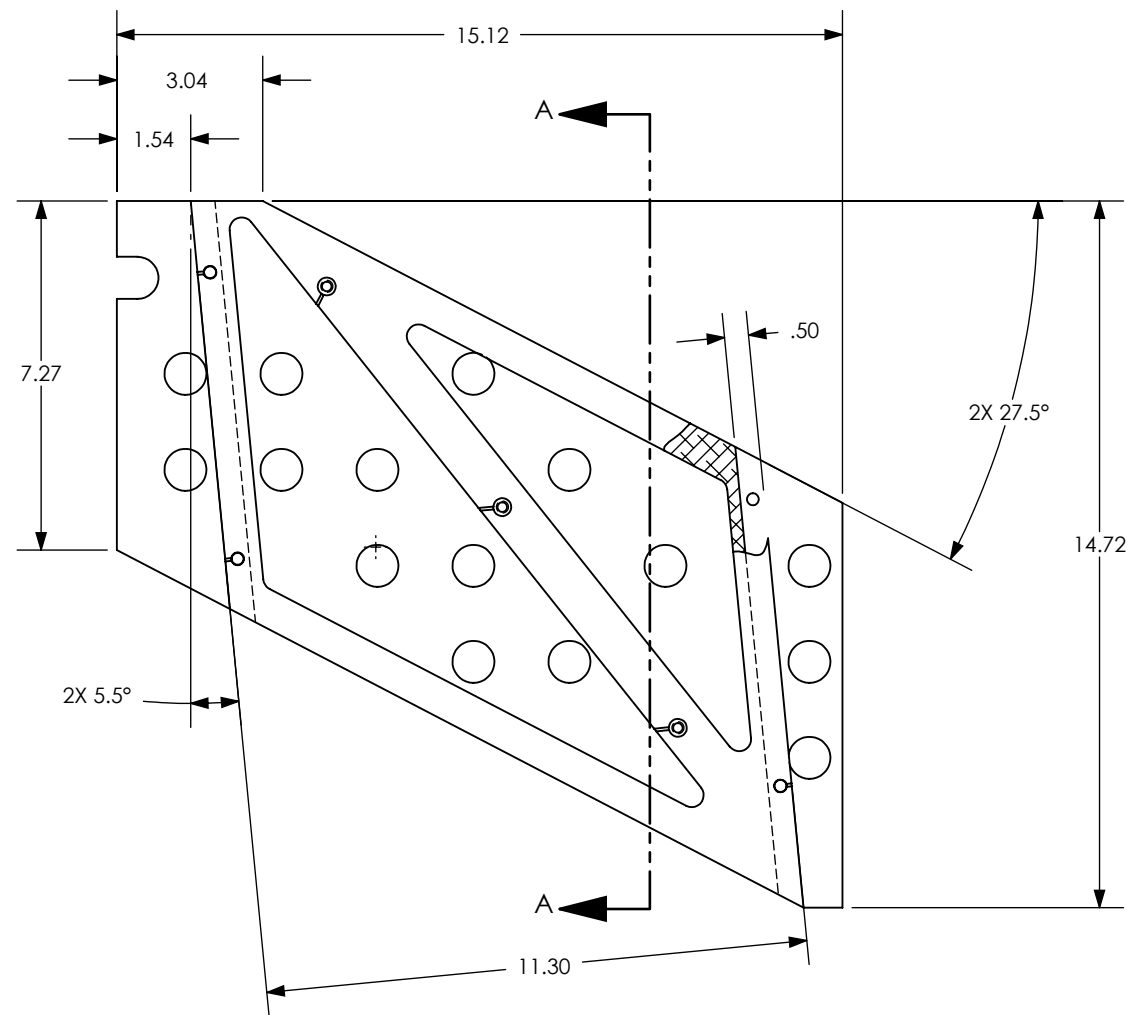
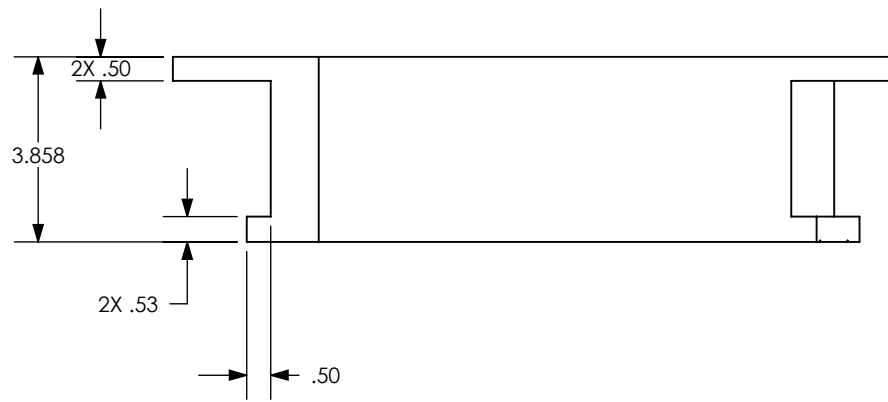


NOTES CONTINUED:

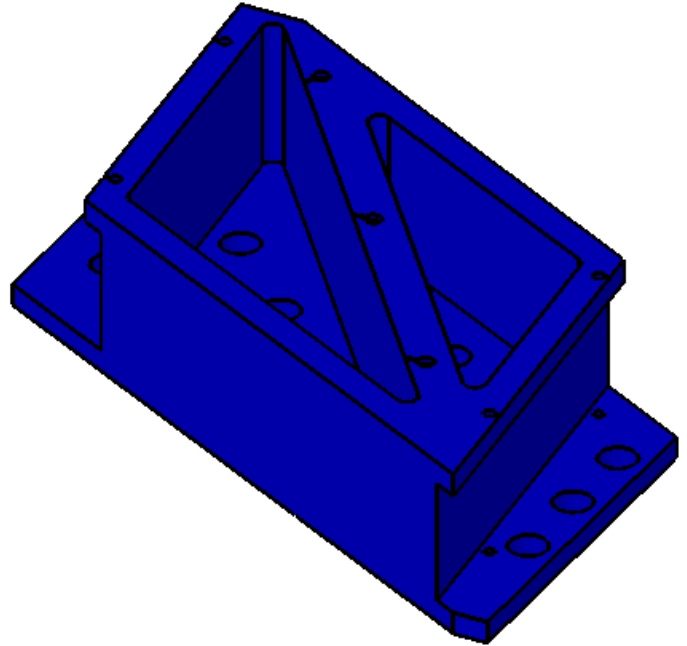
5. SCRIBE, ENGRAVE (A VIBRATORY TOOL MAY BE USED), LASER MARK OR MECHANICALLY STAMP (NO INKS OR DYES) DRAWING PART NUMBER, REVISION (AND VARIANT OR "TYPE" IF APPLICABLE) ON NOTED SURFACE OF PART FOLLOWED ON THE NEXT LINE WITH A THREE DIGIT SERIAL NUMBER. SERIAL NUMBERS START AT 001 FOR THE FIRST ARTICLE AND PROCEED CONSECUTIVELY. USE MINIMUM 0.12" HIGH CHARACTERS, UNLESS THE SIZE OF THE PART DICTATES SMALLER CHARACTERS. EXAMPLE: DXXXXXX-VY, TYPE-XX, S/N XXX

- 6. MACHINE ALL SURFACES TO REMOVE OXIDES AND MILL FINISH. USE OF ABRASIVE REMOVAL TECHNIQUES IS NOT ALLOWED. REFER TO LIGO-E0900364
- 7. ALL PARTS SHALL BE MANUFACTURED IN ACCORDANCE WITH LIGO SPECIFICATION E0900364.
- 8. APPROXIMATE PART WEIGHT: 18.49 LB.

REV.	DATE	DCN #	DRAWING TREE #
v2	02 APR 2012	E1000865	-
-	-	-	-
-	-	-	-



SECTION A-A



NOTES AND TOLERANCES: (UNLESS OTHERWISE SPECIFIED)

DIMENSIONS ARE IN INCHES

TOLERANCES:
 .XX ± .01
 .XXX ± .005
 ANGULAR ± .5°

1. INTERPRET DRAWING PER ASME Y14.5-1994.
 2. REMOVE ALL SHARP EDGES, .005-.015, FOR MACHINED PARTS. ROUND ALL EDGES APPROXIMATELY R.02 FOR SHEET METAL PARTS.
 3. DO NOT SCALE FROM DRAWING.
 4. ALL MACHINING FLUIDS MUST BE FULLY SYNTHETIC, FULLY WATER SOLUBLE AND FREE OF SULFUR, SILICONE, AND CHLORINE.

MATERIAL	6061-T6 Al	FINISH	63 μinch
----------	------------	--------	----------

CALIFORNIA INSTITUTE OF TECHNOLOGY MASSACHUSETTS INSTITUTE OF TECHNOLOGY		PART NAME	
SYSTEM ADVANCED LIGO		SUB-SYSTEM AOS	
NEXT ASSY		D1003349	
DESIGNER MRUIZ		DATE 2 APR 2012	
DRAFTER MRUIZ		DATE 02 APR 2012	
CHECKER M. SMITH		DATE 17 MAY 2012	
APPROVAL M. SMITH		DATE 17 MAY 2012	
SIZE B		DWG. NO. D1100366	
SCALE: 1:4		PROJECTION:	
SHEET 1 OF 3		REV. v2	

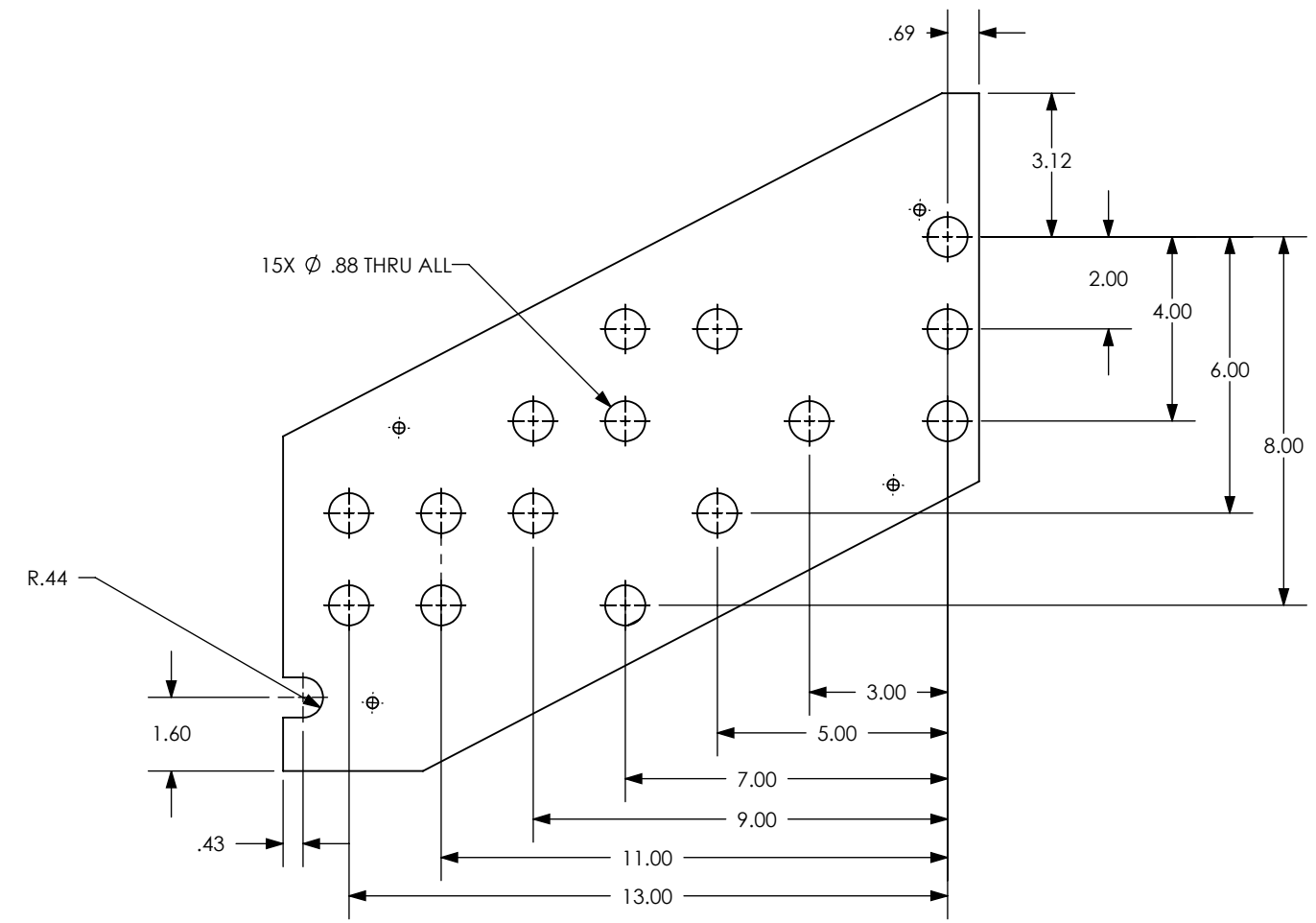
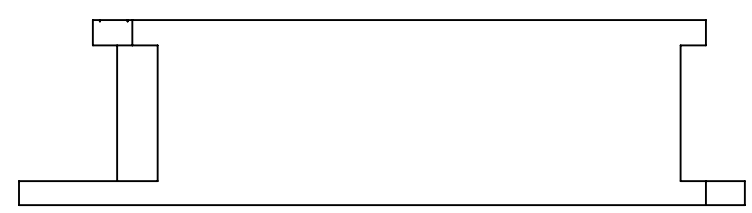
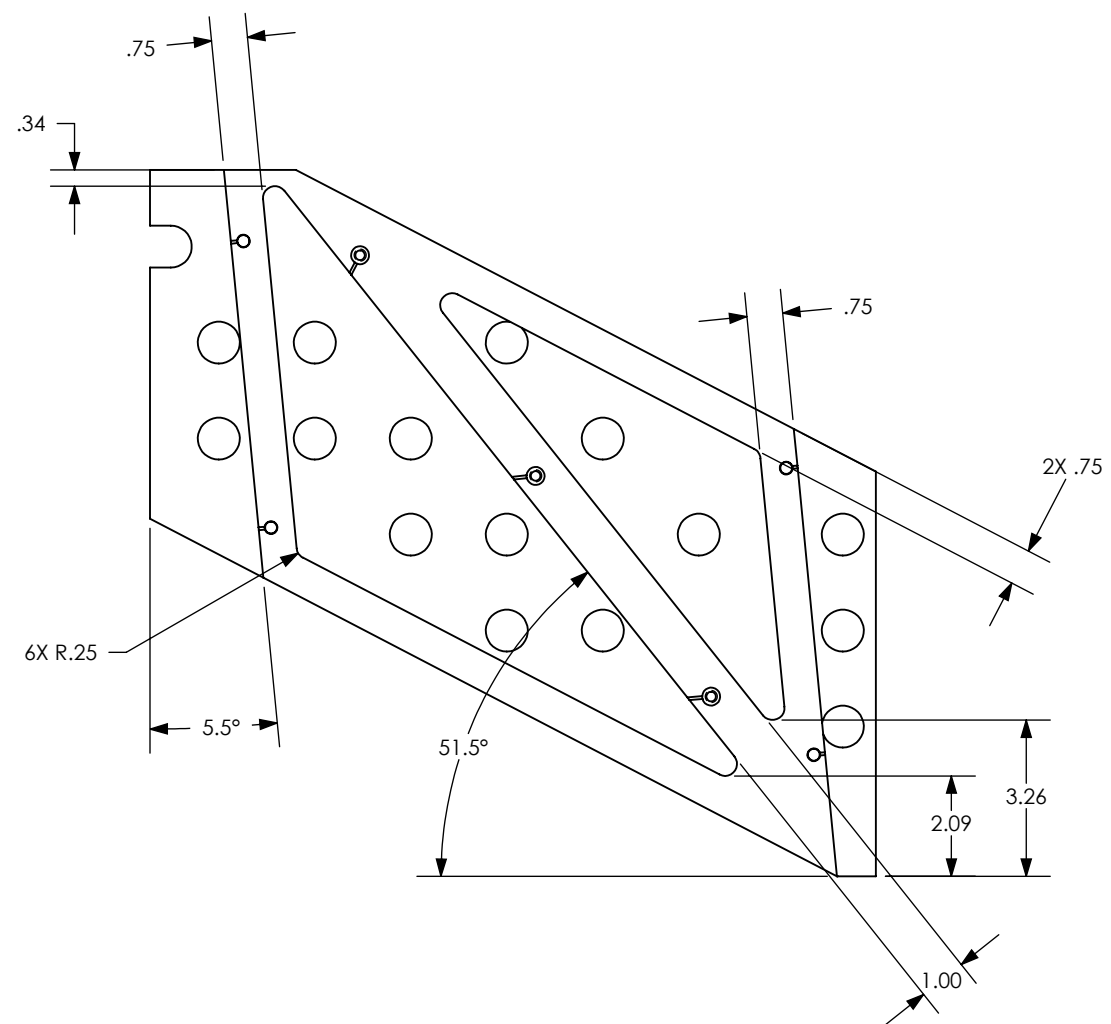
D1100366 AdLIGO AOS Spacer, Scraper Baffle, L1, PART PDM REV: X-035, DRAWING PDM REV: X-015

D1100366 AdLIGO AOS Spacer, Scraper Baffle, L1, PART PDM REV: X-035, DRAWING PDM REV: X-015

8 7 6 5 4 3 2 1

D
C
B
A

D
C
B
A

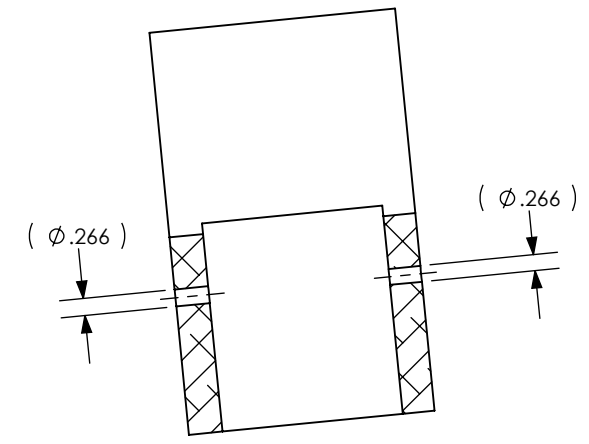
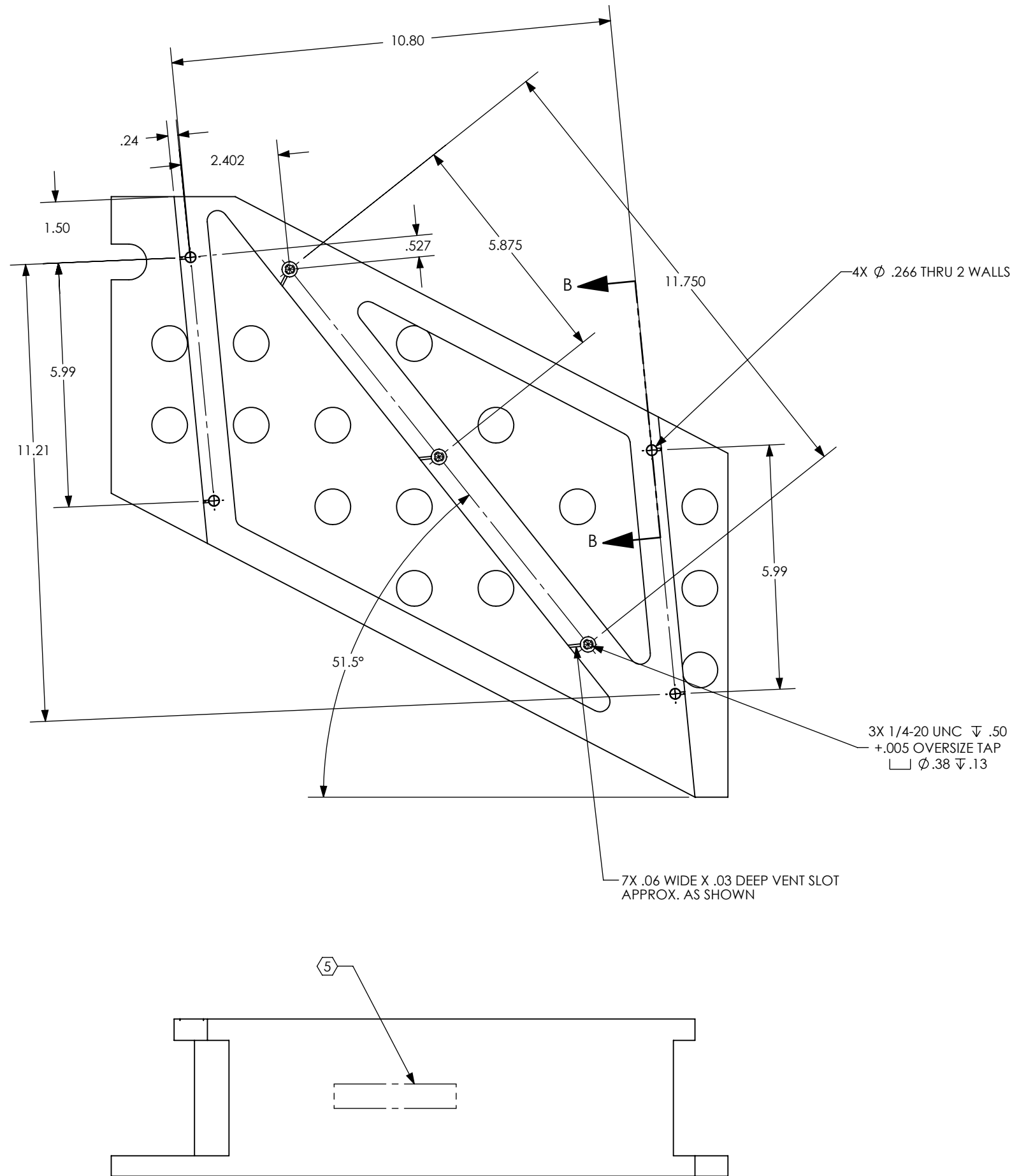


8 7 6 5 4 3 2 1

LIGO CALIFORNIA INSTITUTE OF TECHNOLOGY
MASSACHUSETTS INSTITUTE OF TECHNOLOGY

SIZE	DWG. NO.	REV.
B	D1100366	v2
SCALE: 1:4		PROJECTION:
		SHEET 2 OF 3

D1100366 AdLIGO AOS Spacer, Scraper Baffle, L1, PART PDM REV: X-035, DRAWING PDM REV: X-015



3X 1/4-20 UNC ∇ .50
 +.005 OVERSIZE TAP
 \sqcap ϕ .38 ∇ .13

LIGO CALIFORNIA INSTITUTE OF TECHNOLOGY MASSACHUSETTS INSTITUTE OF TECHNOLOGY	
SIZE B	DWG. NO. D1100366
SCALE: 1:4	PROJECTION:
REV. v2	SHEET 3 OF 3