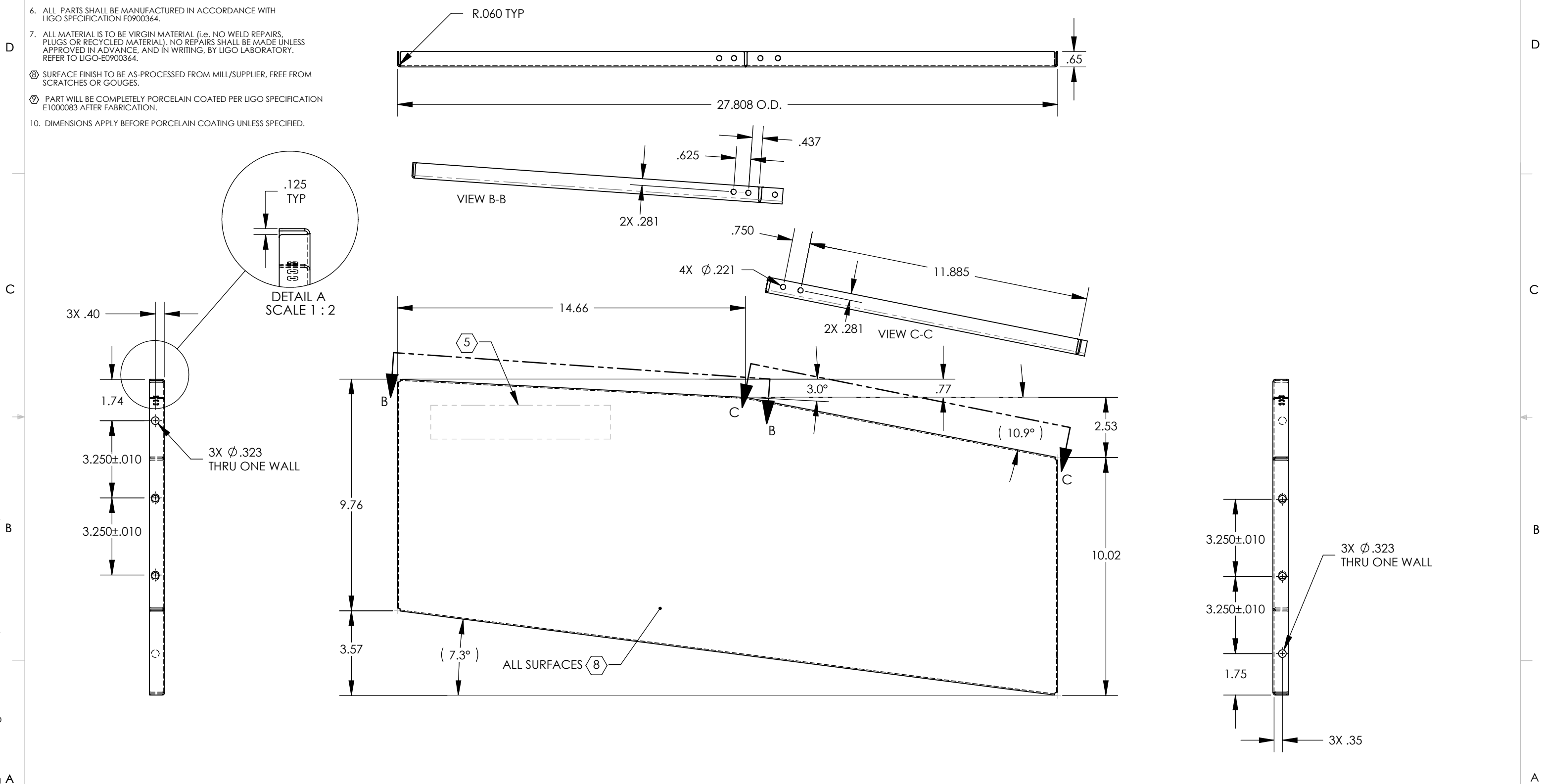


- NOTES CONTINUED:
- 5. MECHANICALLY STAMP (NO INKS OR DYES) PART NUMBER, REVISION AND SERIAL NUMBER .20 DEEP WITH MINIMUM CHARACTER HEIGHT .156 APPROXIMATELY WHERE SHOWN. SERIAL NUMBER WILL START AT 001 AND PROCEED CONSECUTIVELY. EXAMPLE: D100XX-V1 S/N 001
  - 6. ALL PARTS SHALL BE MANUFACTURED IN ACCORDANCE WITH LIGO SPECIFICATION E0900364.
  - 7. ALL MATERIAL IS TO BE VIRGIN MATERIAL (i.e. NO WELD REPAIRS, PLUGS OR RECYCLED MATERIAL). NO REPAIRS SHALL BE MADE UNLESS APPROVED IN ADVANCE, AND IN WRITING, BY LIGO LABORATORY. REFER TO LIGO-E0900364.
  - 8. SURFACE FINISH TO BE AS-PROCESSED FROM MILL/SUPPLIER, FREE FROM SCRATCHES OR GOUGES.
  - 9. PART WILL BE COMPLETELY PORCELAIN COATED PER LIGO SPECIFICATION E1000083 AFTER FABRICATION.
  - 10. DIMENSIONS APPLY BEFORE PORCELAIN COATING UNLESS SPECIFIED.

REV.	DATE	DCN #	DRAWING TREE #
v1	14 MAR 2011	-	-
v2	07 APR 2011	E1100216	-
v3	25 JUN 2011	E1100335	-

D1100354\_AdlIGO\_AOS\_SLC\_ACB Right Side Extender, PART PDM REV: X-073, DRAWING PDM REV: X-010



NOTES AND TOLERANCES: (UNLESS OTHERWISE SPECIFIED)				LIGO CALIFORNIA INSTITUTE OF TECHNOLOGY MASSACHUSETTS INSTITUTE OF TECHNOLOGY		PART NAME	
DIMENSIONS ARE IN INCHES				ADVANCED LIGO		ACB RIGHT SIDE EXTENDER	
TOLERANCES: .XX ± .03 .XXX ± .015				SUB-SYSTEM AOS		DESIGNER N.Nguyen 24 Feb 2011	
ANGULAR ± 1.0°				NEXT ASSY D1100359		DRAFTER N.KILPATRICK 13 MAR 2011	
MATERIAL 18 GA ENAMEL STEEL A424				FINISH 8 9		SIZE DWG. NO. B D1100354	
						REV. v3	
						SCALE: 1:4 PROJECTION: SHEET 1 OF 1	