

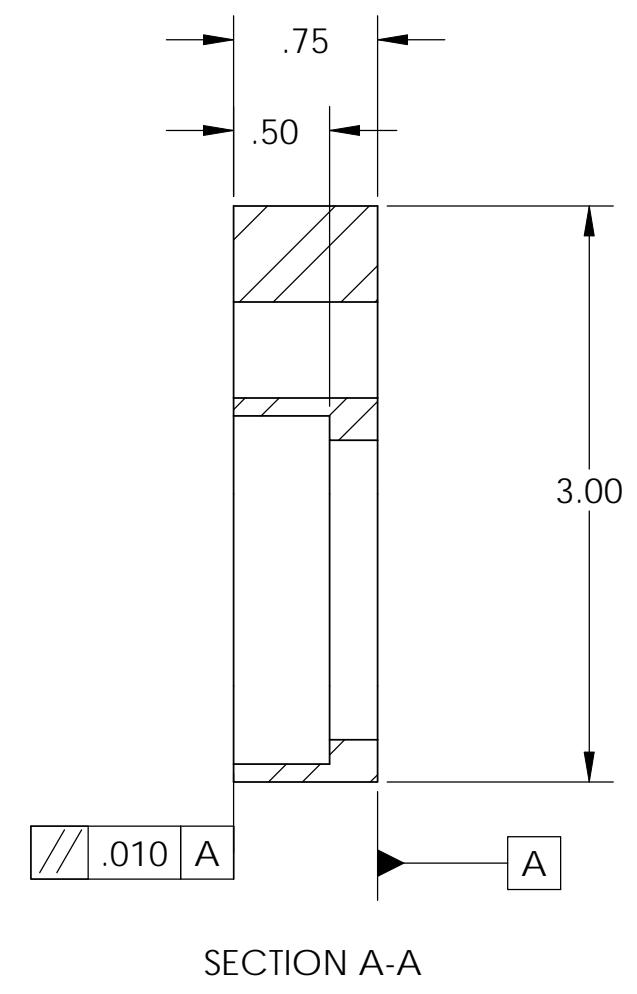
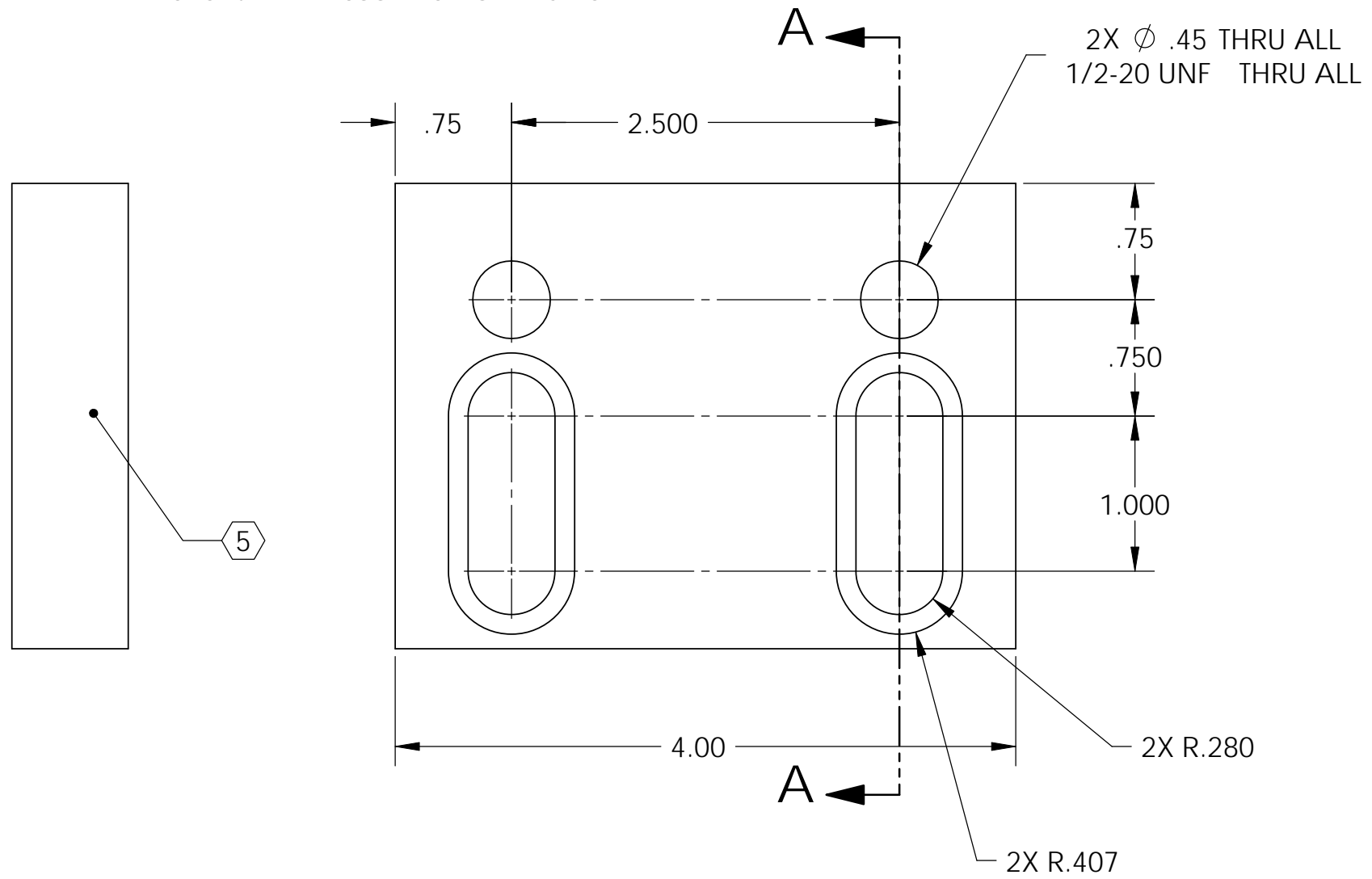
REV.	DATE	DCN #	DRAWING TREE #
v1	16 Mar. 2011	E1100015	E1100016

NOTES CONTINUED:

4. ALL MACHINING FLUIDS MUST BE FULLY SYNTHETIC, FULLY WATER SOLUBLE AND FREE OF SULFUR, SILICONE AND CHLORINE.
5. SCRIBE, ENGRAVE, OR MECHANICALLY STAMP (NO INKS OR DYES) DRAWING PART NUMBER, REVISION (AND VARIANT OR "TYPE" IF APPLICABLE ON NOTED SURFACE OF PART FOLLOWED ON THE NEXT LINE WITH A THREE DIGIT SERIAL NUMBER. SERIAL NUMBERS START AT 001 FOR THE FIRST ARTICLE AND PROCEED CONSECUTIVELY. USE MINIMUM 0.12 HIGH CHARACTERS, UNLESS THE SIZE OF THE PART DICTATES SMALLER CHARACTERS. A VIBRATORY TOOL MAY BE USED. EXAMPLE DXXXXXXX-VY, TYPE-XX, S/N XXX.
6. APPROXIMATE WEIGHT = 1.9893340 LB.
7. ALL PARTS SHALL BE MANUFACTURED IN ACCORDANCE WITH LIGO SPECIFICATION E0900364.
8. PAINT: ALL VISIBLE SURFACES (exclude fastening hardware) EXCEPT AREAS IDENTIFIED BY M MEDIUM BLUE SHERWIN WILLIAMS (POLANE (R) T-PLUS POLYURETHANE ENAMEL) #SW-F63TX-L-2822-5864 PRIME WITH SHERWIN WILLIAMS INDUSTRIAL WASH PRIMER P60G2
9. "OXI SOLV RUST INHIBITOR" TO BE APPLIED PER MFG. INSTRUCTIONS TO ALL UNPAINTED SURFACES. BOTH TAPPED AND THRU HOLES WILL BE PLUGGED DURING APPLICATION.

D  
C  
B  
A

D  
C  
B  
A



D1100315, PART PDM REV: X-006, DRAWING PDM REV: X-003

NOTES AND TOLERANCES: (UNLESS OTHERWISE SPECIFIED)				LIGO CALIFORNIA INSTITUTE OF TECHNOLOGY MASSACHUSETTS INSTITUTE OF TECHNOLOGY		PART NAME	
DIMENSIONS ARE IN INCHES		1. INTERPRET DRAWING PER ASME Y14.5-1994.		ADVANCED LIGO		UNIFIED HYDRAULIC ACTUATOR BRACKET BASE 1, aLIGO HEPI	
TOLERANCES: .XX ± .015 .XXX ± .005		2. REMOVE ALL SHARP EDGES, .03 x 45°.		SUB-SYSTEM SEI		DESIGNER	M.HAMMOND 17 Oct. 2003
ANGULAR ± .5°		3. DO NOT SCALE FROM DRAWING.		NEXT ASSY D1100144, D1100146 D1100241, D1100242		DRAFTER	M.HILLARD 16 Mar. 2011
MATERIAL		FINISH		APPROVAL		CHECKER	M.HAMMOND 16 Oct. 2003
AISI 1018 Steel Cold Rolled		63 μinch		K.MASON 16 Mar. 2011		APPROVAL	K.MASON 16 Mar. 2011
SCALE: 1:1				PROJECTION:		SIZE DWG. NO. D1100315	
SHEET 1 OF 1				REV. v1			

8 7 6 5 4 3 2 1