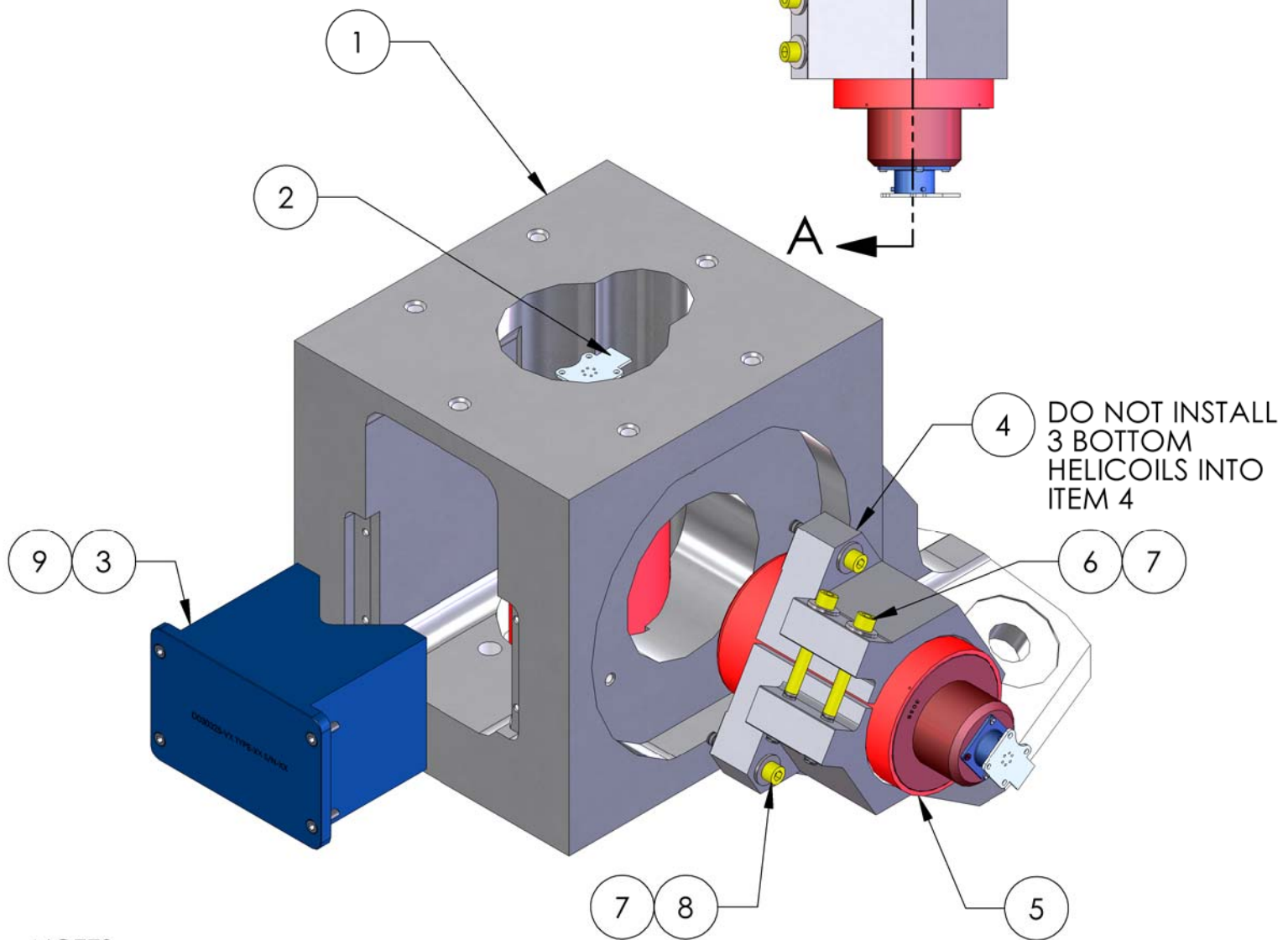
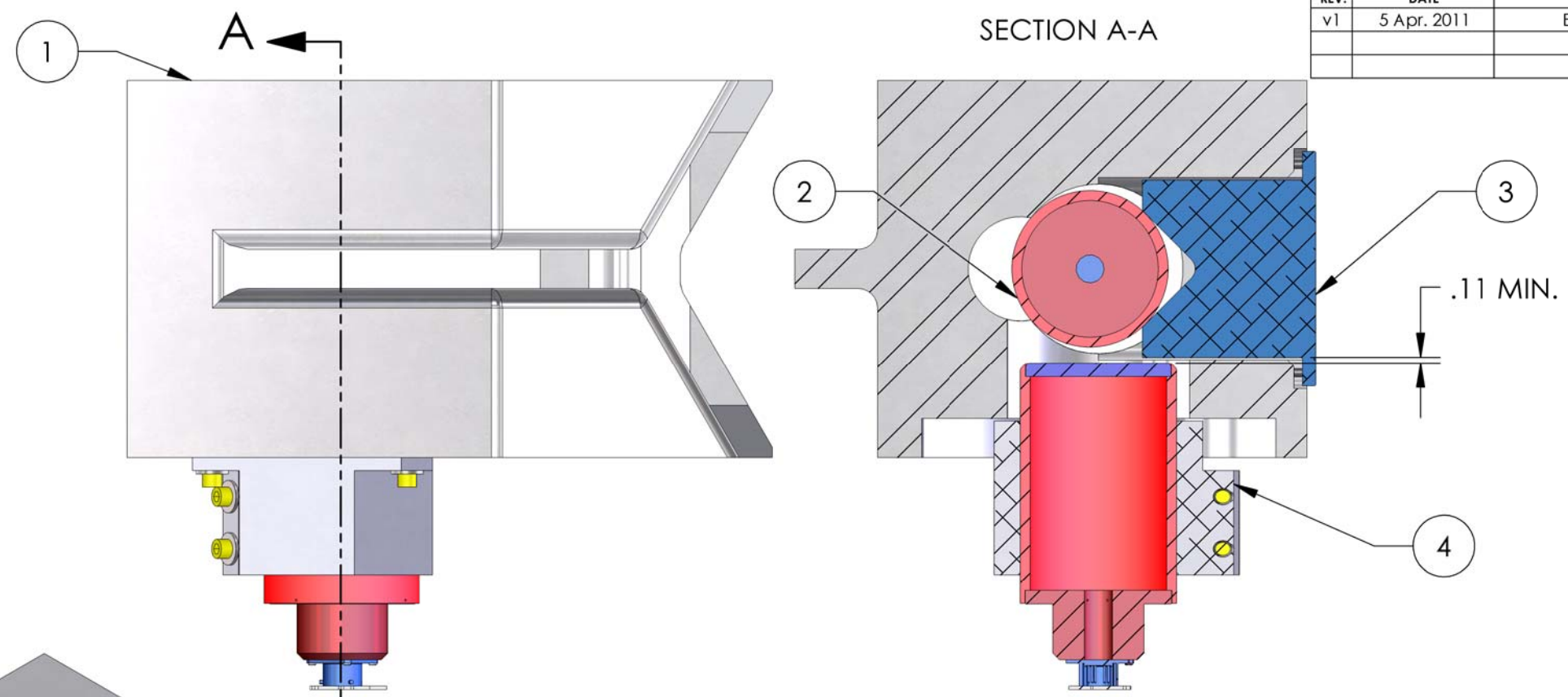


D1100305 HEPI CROSSBEAM ATTACHMENT, αLIGO BSC LEFT, PART PDM REV: X-008, DRAWING PDM REV: X-002

REV.	DATE	DCN #	DRAWING TREE #
v1	5 Apr. 2011	E1100015	E1100016



ITEM NO.	PART NUMBER	DESCRIPTION	MATERIAL	REQ Q
11	HOLOKROME_72092	SCREW 1/4-20 x 1/2 LG. SHCS	Alloy Steel	3
10	D030323	Vertical Actuator Crossbeam Foot Interface	6061-T6 Al	1
9	HOLOKROME_78028	Screw, 8-32 x .50 lg SHCS	18-8 SS	4
8	HOLOKROME 78066	SCREW 1/4-20 X 1 1/2 LG SHCS	18-8 SSSL	3
7	McMASTER_90126A029	WASHER .281 ID X .63 OD X .05-0.8 THK	Alloy Steel	5
6	McMASTER_92196A553	SCREW 1/4-20 X 2 3/4 LG SHCS, 1" TO FULLY THREADED	18-8 SSSL	2
5	005310-002-0	SERCEL L-4C 1.0 Hz SEISMOMETER, HORIZONTAL		1
4	D030586	HEPI L4-C Mount	6061-T6 Al	1
3	D030325	BSC, L-4C CLAMP, αLIGO HEPI	6061-T6 Al	1
2	005310-001-0	SERCEL L-4C 1.0 Hz SEISMOMETER, VERTICAL		1
1	D020195-01	HEPI CROSSBEAM FOOT LEFT, αLIGO BSC	Low Carbon Steel	1

NOTES:  
 4. VENDOR REFERENCES ARE PROVIDED AS EXAMPLES OF PARTS MEETING ALL REQUIRED SPECIFICATIONS. EQUIVALENTS ARE ALWAYS ACCEPTABLE UNLESS OTHERWISE SPECIFIED.  
 5. REFER TO LIGO E0900357 FOR ASSEMBLY AND LOADING PROCEDURE.

NOTES AND TOLERANCES: (UNLESS OTHERWISE SPECIFIED)	
DIMENSIONS ARE IN INCHES	1. INTERPRET DRAWING PER ASME Y14.5-1994.
TOLERANCES: .XX ± N/A .XXX ± N/A	2. REMOVE ALL SHARP EDGES, .03 x 45°.
ANGULAR ± N/A*	3. DO NOT SCALE FROM DRAWING.
MATERIAL	N/A
FINISH	N.A μinch

LIGO CALIFORNIA INSTITUTE OF TECHNOLOGY MASSACHUSETTS INSTITUTE OF TECHNOLOGY				PART NAME	
ADVANCED LIGO		SUB-SYSTEM		HEPI CROSSBEAM ATTACHMENT, αLIGO BSC LEFT	
DESIGNER	M.HILLARD	15 Feb. 2011	SIZE	DWG. NO.	
DRAFTER	M.HILLARD	5 Apr. 2011	B	D1100305	
CHECKER	K.MASON	5 Apr. 2011	SCALE	1:3	PROJECTION
APPROVAL	K.MASON	5 Apr. 2011	SHEET	1 OF 1	
NEXT ASSY		D1100241			