
Description of the LIGO Laboratory

Gary Sanders

LIGO Laboratory

August 14, 1997

LSC Formation Meeting, Baton Rouge



Steps...

- Aspen 1995 Workshop stimulates formation of LIGO Research Community
- LIGO Research Community forms
- NSF forms Panel on the Long Range Use of LIGO (1996)
- Report of Panel (*on NSF Web page*) calls for
 - » formation of LIGO Laboratory
 - » formation of LIGO Science Collaboration
 - » formation of strong LIGO Program Advisory Committee
 - » aggressive program of advanced R&D
 - » definition of needs for data analysis
 - » initiation of a Visitor's Program

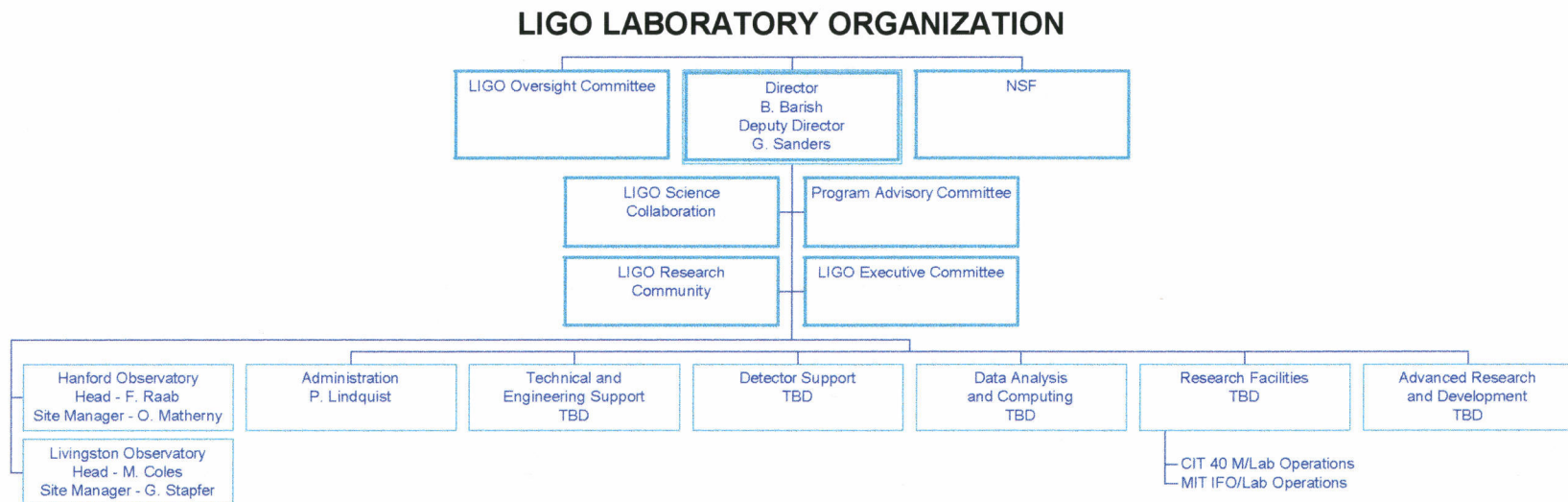


Steps (continued)...

- PAC review of draft of LIGO Scientific Collaboration Formation Plan in January 1997.
- Draft presented at January 1997 Aspen Winter Conference generating vigorous debate.
- Lab Charter and revised draft for LSC posted on LIGO website March 5, 1997 and circulated by email bulletin to entire LRC.
- LIGO Oversight Committee provided review.
- LIGO PAC comments again in June, 1997
- Caltech, MIT, NSF final approval of Lab in process



LIGO Laboratory



LIGO Laboratory Charter Changes...

- Relationship to LIGO Project Management Plan defined
- Oversight Committee charge and role better defined
- LSC website hyperlinked and possible formation of other collaborations acknowledged
- How PAC advice will be used by Directorate is stated more clearly
- Executive Committee membership broadened beyond Group Leaders to include all Caltech and MIT professorial faculty and senior scientists



LIGO Laboratory Charter Changes

- NSF approval of PAC membership removed
- Visitor's Program can be "bidirectional"
- Functional group definitions tightened and funding sources defined
- ES&H section streamlined
- ES&H reporting to Directorate specified
- Relationship of Charter and Project Management Plan during coexistence is defined



Functions

- Directorate
- Administration
- Hanford and Livingston Observatories
- Technical and Engineering Support
- Detector Support
- Campus Research Facilities
- Advanced R&D
- Data Analysis and Computing Support

