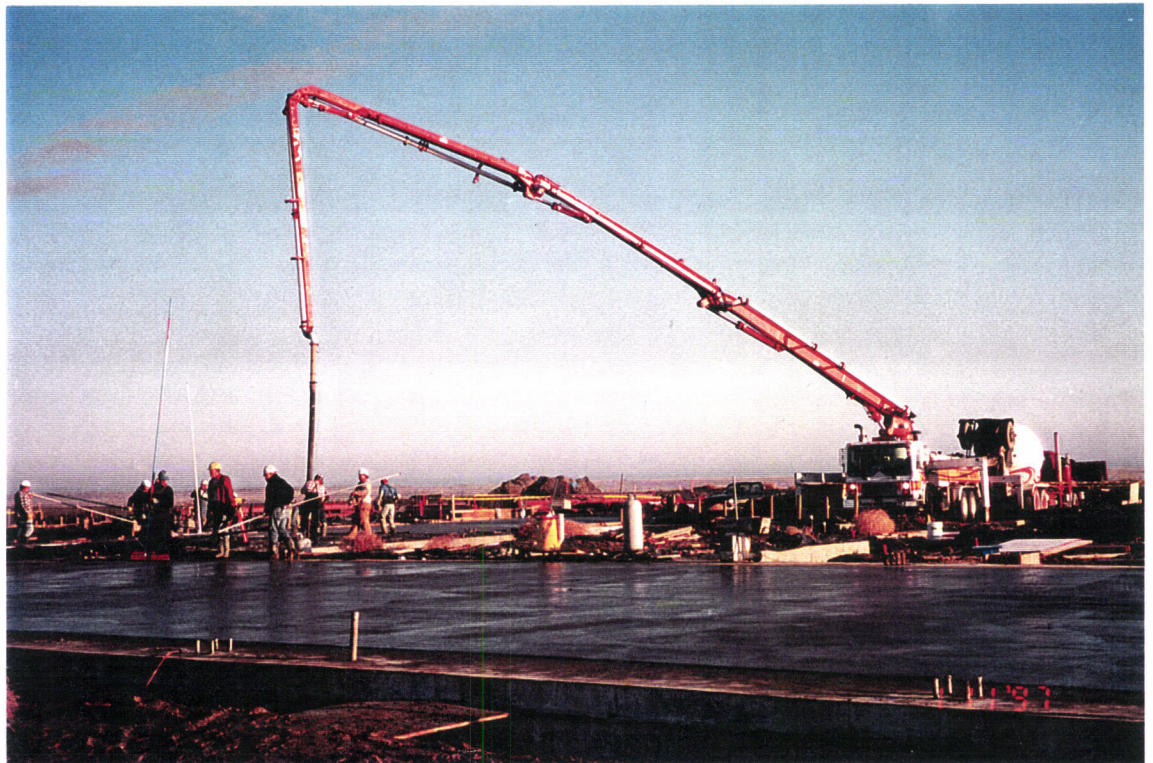




G970008-01-O-P

Placing final 6" lift of the Corner Station LVEA. 3 concrete pump trucks were used to place the 500+ yards.



G970008-02-O-PV

Placement of concrete continues.



G970008-03-O-PV

26 concrete finisher and 16 carpenters and laborers were used to place the top 6" lift



G970008-04-O-P

The three pump trucks started at the outside arms and met in the middle



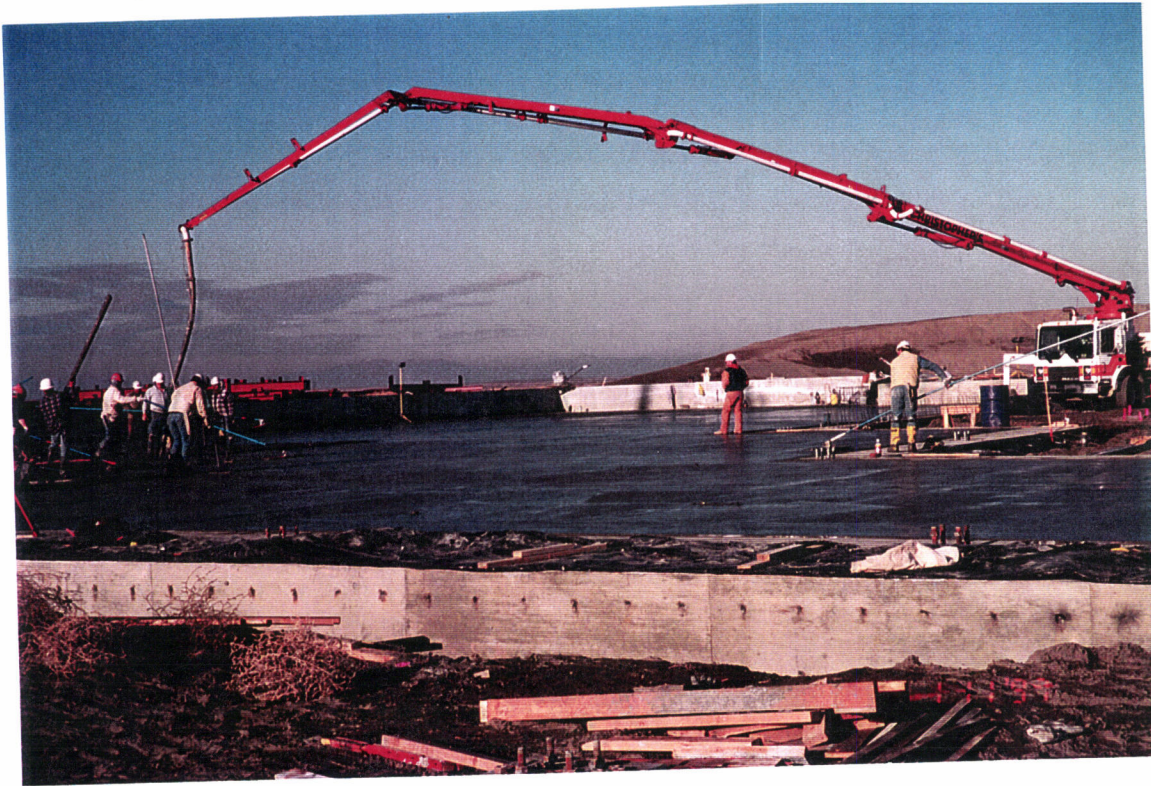
G970008-05 -O-P

Tamping, screeding, floating and checking tolerance shown here.



G970008-06 -O-P

More placing of concrete



G970008-07 -O-P

Three concrete pump trucks were used. This 32 meter boom was stretched to its maximum.



G970008-08 -O-PV

Finishing out the last section to be poured.



G970008-09-O-P

By 11:00 a.m. all concrete was placed and finishing continued.



G970008-10-O-P

Looking toward the southwest arm of the placed LVEA technical slab.



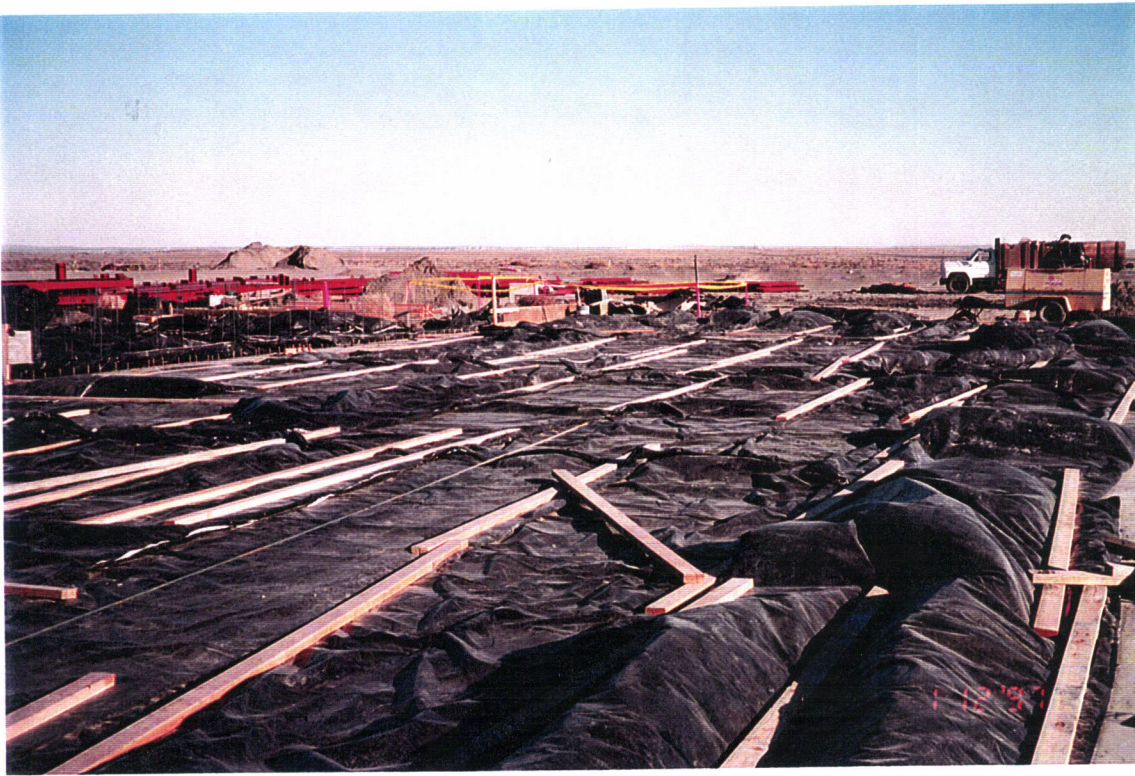
G970008- 11 -O-P

Edge finishing, floating and power troweling continues late into the night.



G970008- 12 -O-P

Cleaning up the edges of the grade beam.



G970008- 13 -O-9

Insulated blankets were placed immediately after finishing



G970008- 14 -O-9

A view of the covered LVEA



G970008- 15 -O-P

Another view of the covered LVEA



G970008- 16 -O-P

After the first two days extra precaution was taken to protect the slab from freezing.



G970008- 17 -O-P

A second cover and heaters were added.



G970008- 18 -O-P

A second cover and heaters were added.



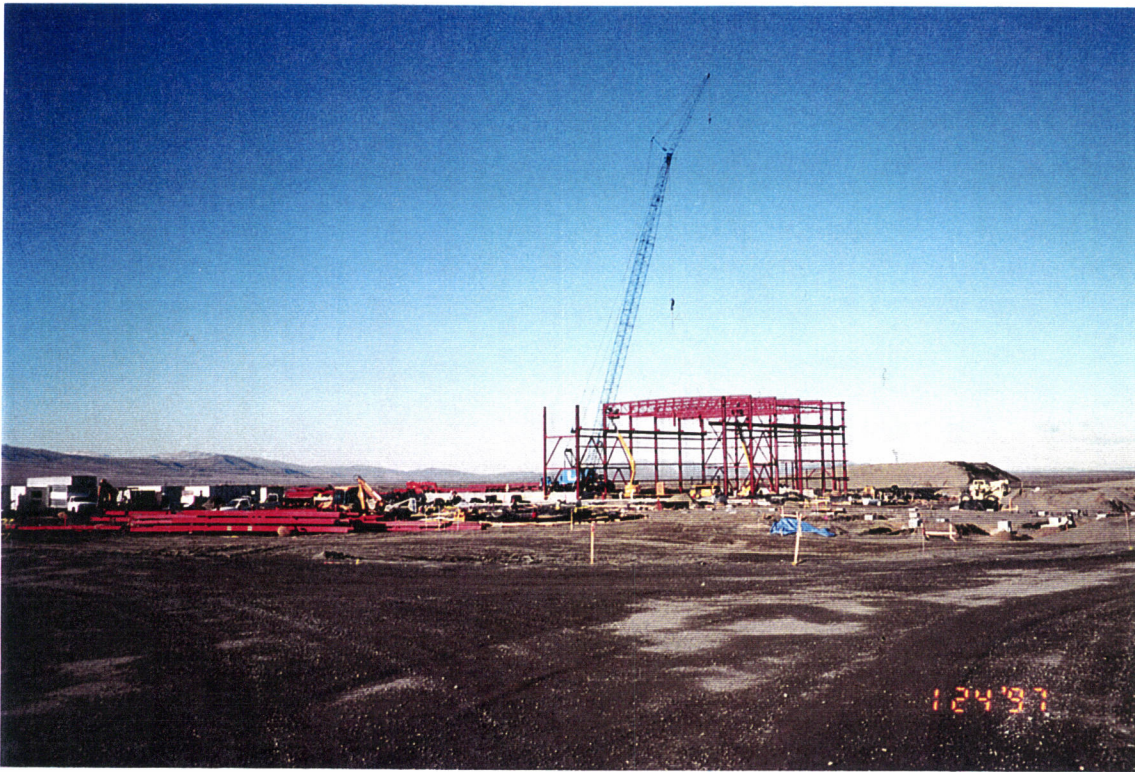
G970008-19-O-P

Laydown yard for the project 2 1/2 miles of PVC pipe for the water line in the center of the photo



G970008-20-O-PV

View from the inside of the beam tube enclosure at the Mid Station looking toward the Corner Station.



G970008- 21 -O- P_V

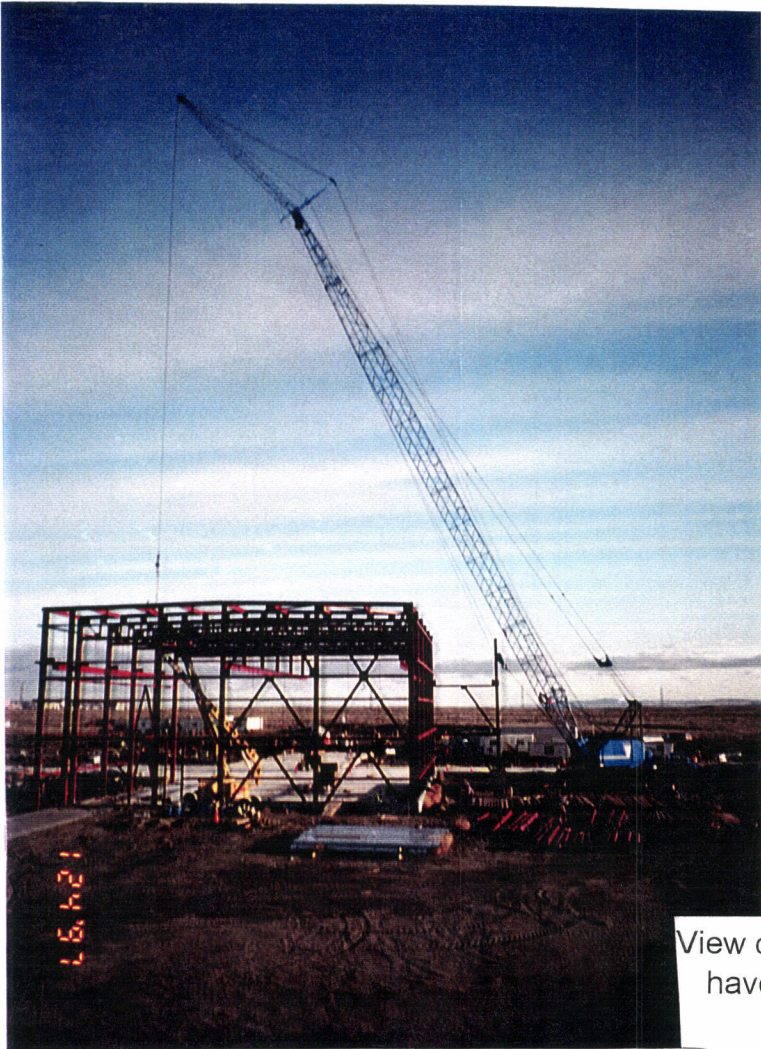
View of the Corner Station from the LIGO entrance.
Structural steel erection of the LVEA has begun.



G970008- 22 -O- P

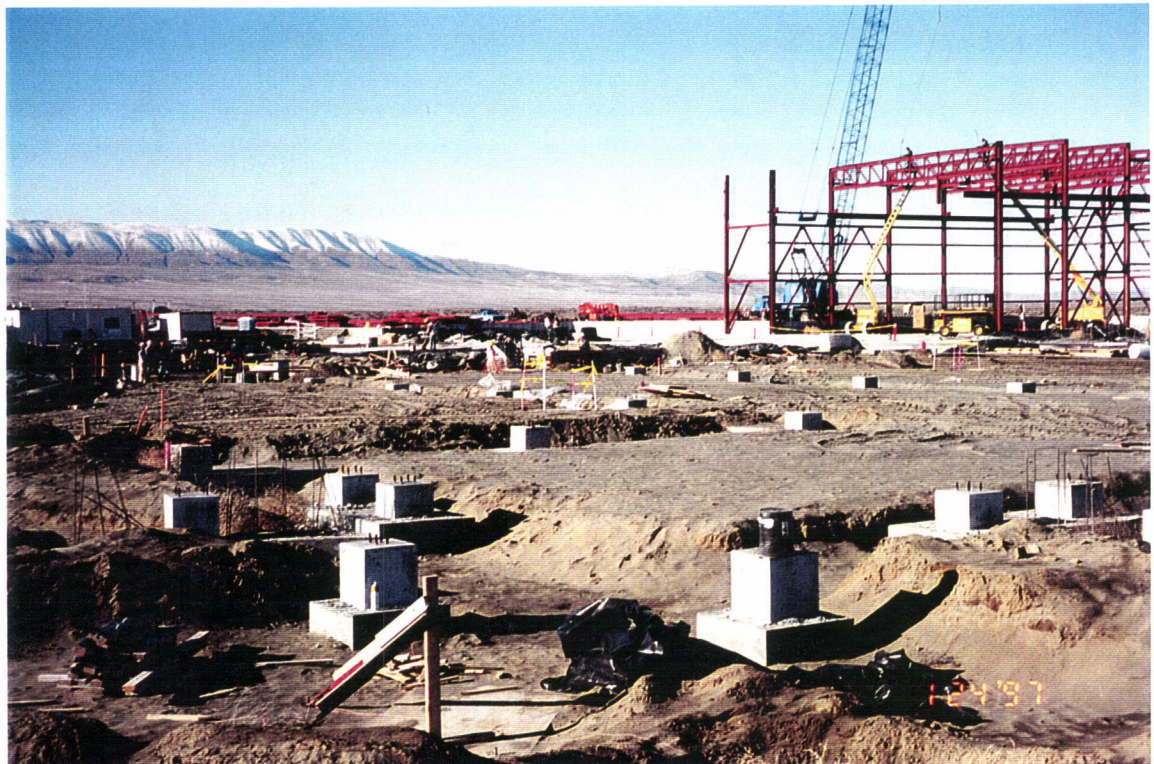
View of the Corner Station from the LIGO 3 monument
looking down the Northwest Arm.

View of the North bay of the LVEA. A 120 ton crane is being used to set the structural steel.



G970008- 23 -O- P

View of the OSB from the front door entrance. All footings have been poured and the underground electrical and plumbing are complete.

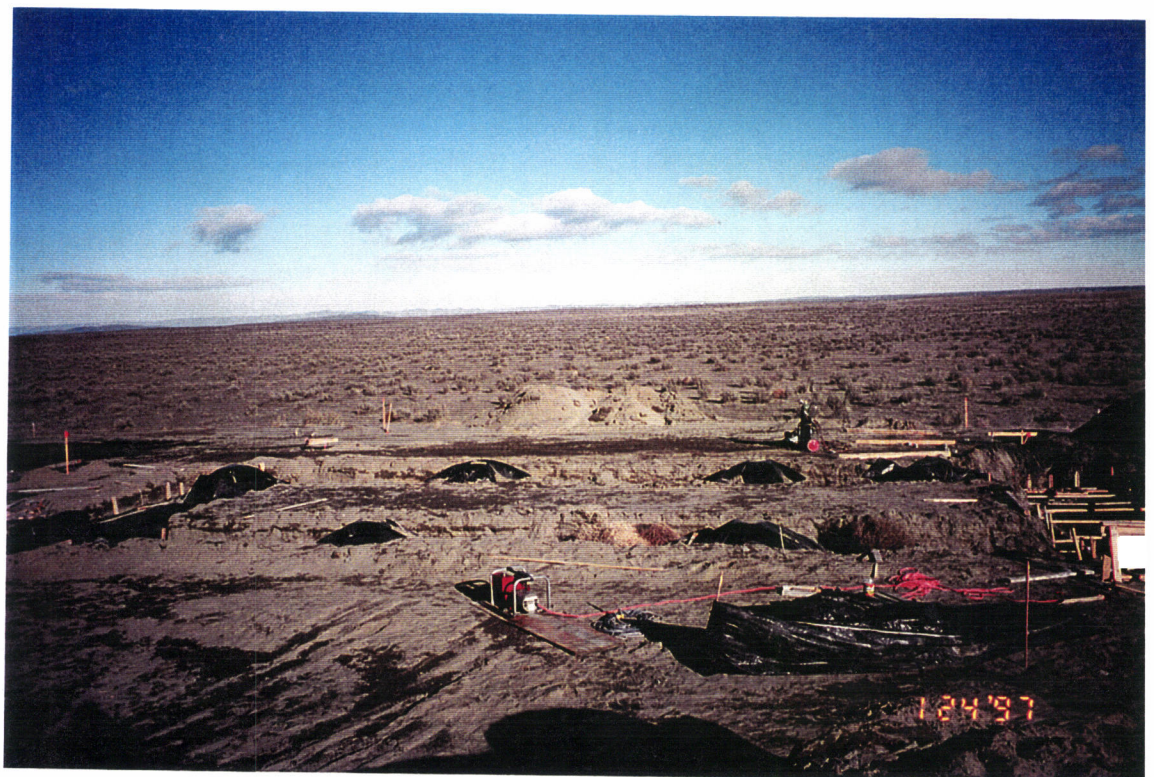


G970008- 24 -O- P



G970008- 25 -O- P

View of the OSB technical support areas. Grading for building slabs continues.



G970008- 26 -O- p

View of the Corner Station Maintenance building. Footings have been poured.



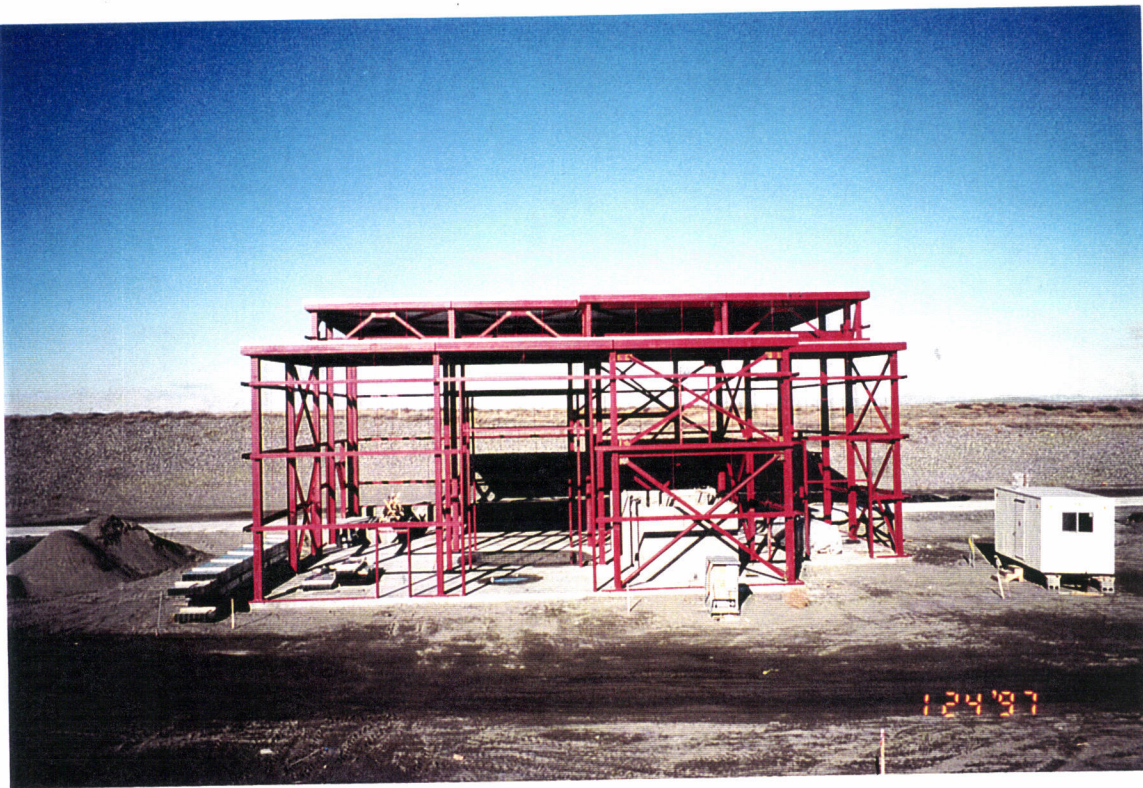
G970008- 27 -O-PV

View of the Corner Station warehouse building. Building structure is complete.



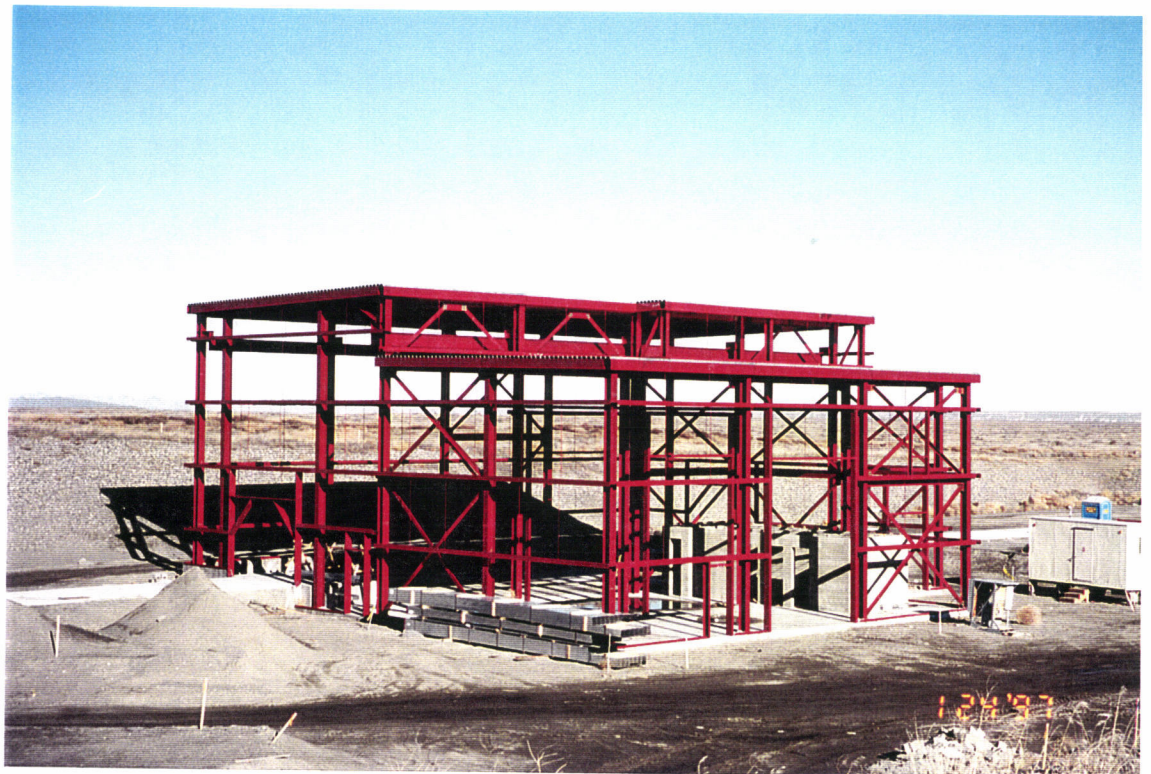
G970008- 28 -O-PV

An interior view of the Corner Station warehouse building. Lighting, heating and electrical installation continues.



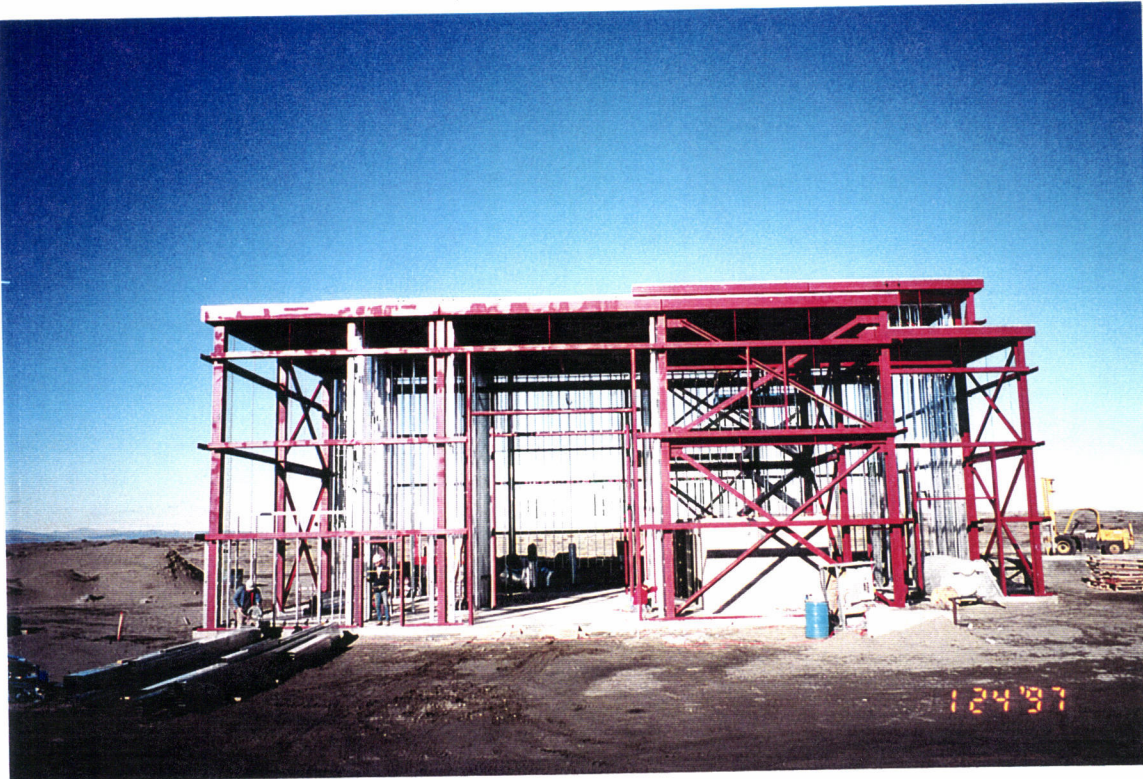
G970008-29 -O-P

View of the Southwest Arm Mid Station looking toward the Northwest.



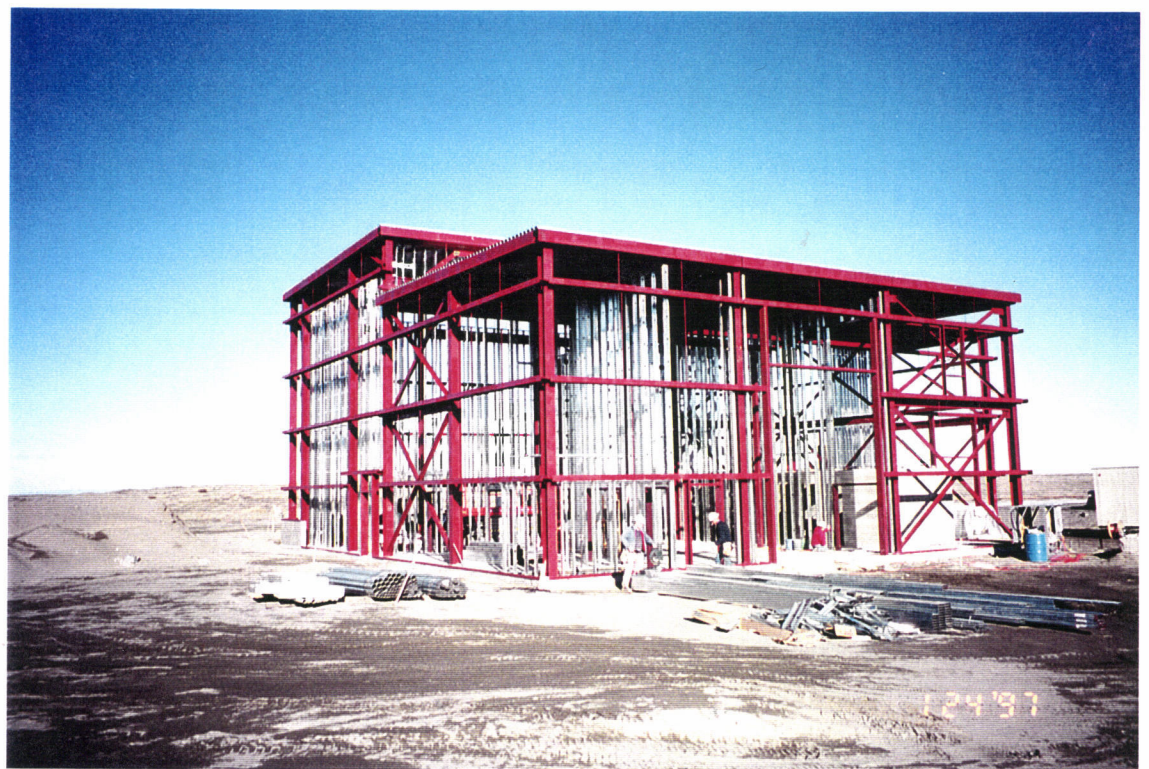
G970008-30 -O-P

View of the Southwest Arm Mid Station looking toward the North. Steel stud framing has been staged and building layout complete.



G970008-31 -O-PV

View of the Southwest Arm End Station looking to the Northwest. Steel stud framing is complete.



G970008-32 -O-PV

View of the Southwest Arm End Station looking toward the North. Door jams and ducting are being installed.



G970008- 33 -O- P

View of the Northwest Arm beam tube installation.



G970008- 34 -O- P V

View of the Northwest Arm beam tube enclosure installation. Over 200 BTE's have been installed.



G970008-35-O-PV

View of the Northwest Arm beam tube enclosure. Setting of the first Type "A" unit.