

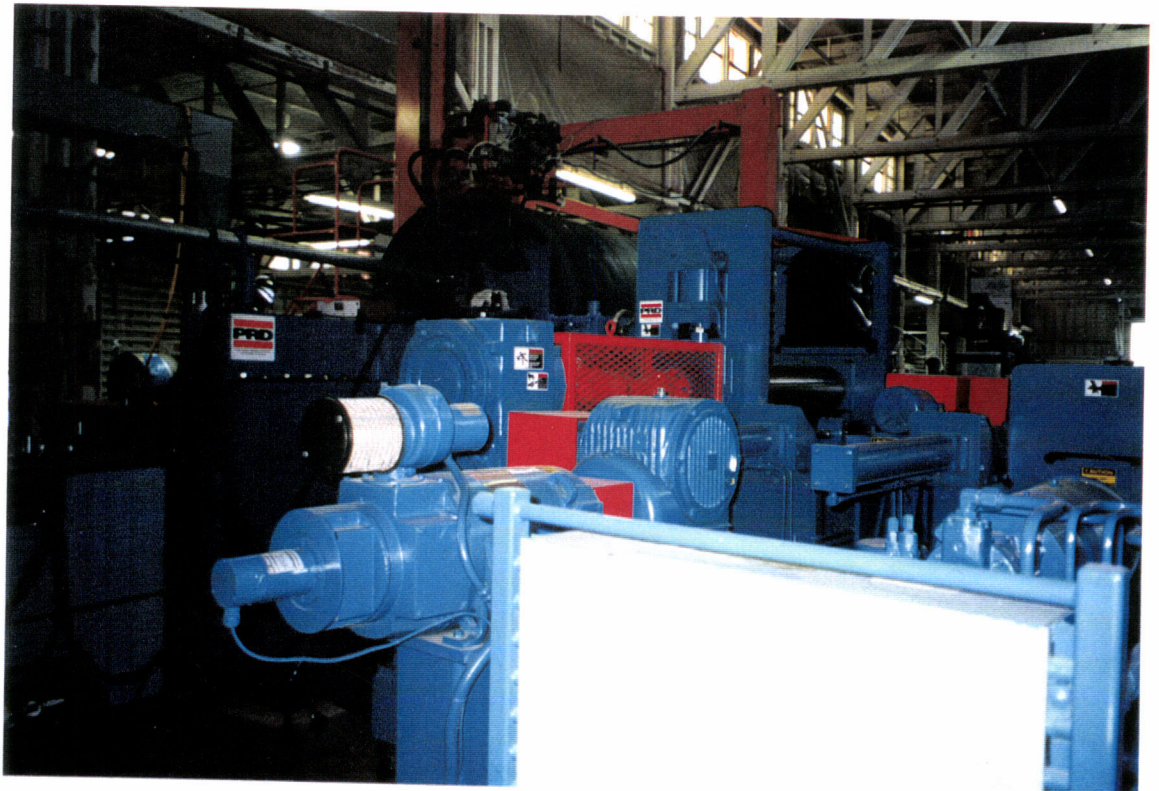
G960169- 01 - O-P

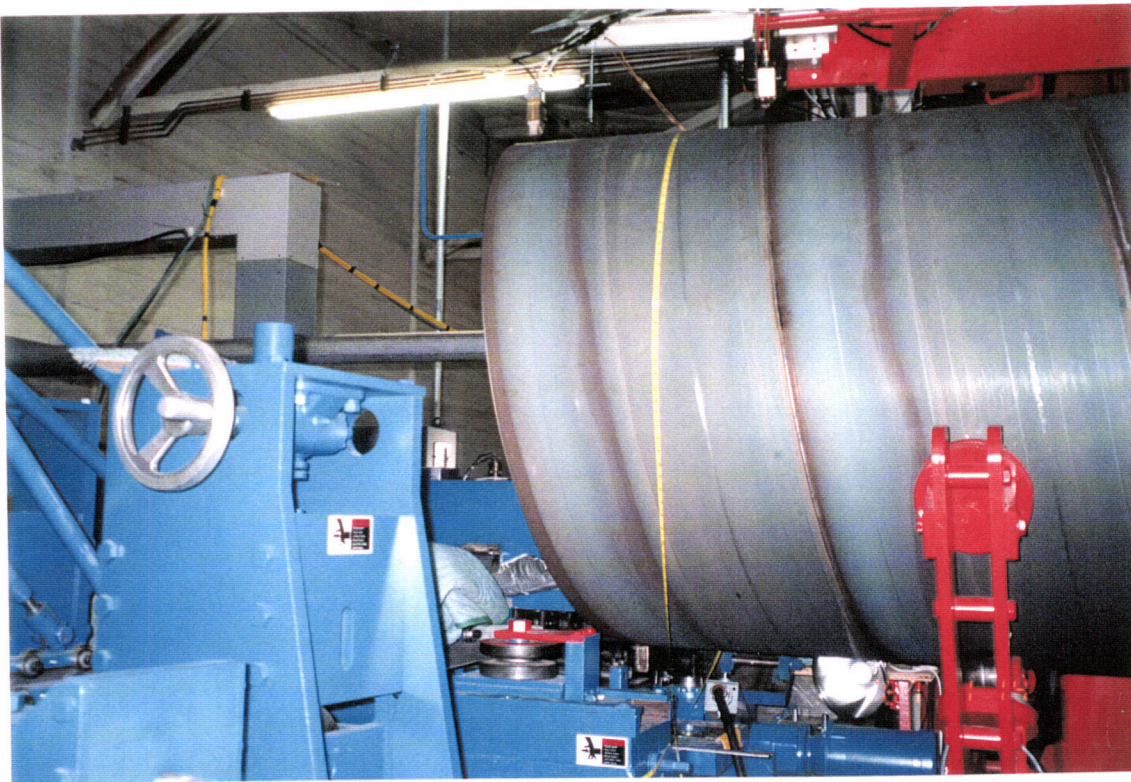
45- The control panel to the spiral mill.

08/16/96

G960169- 02 - O-P

46- The spiral mill from the other side.





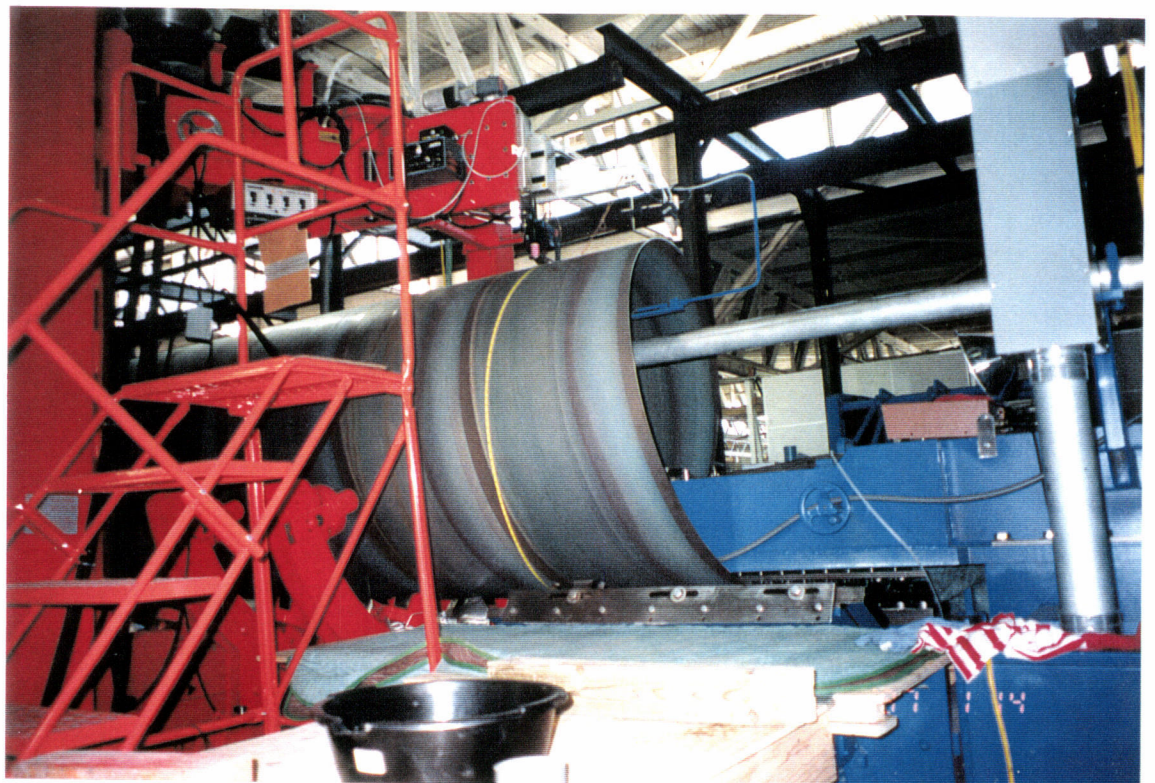
G960169-03 - O-PV

47- Forming the coil material into the spiral.

08/16/96

G960169-04 - O-PV

48- A view from the other side.





G960169-05 - O-P

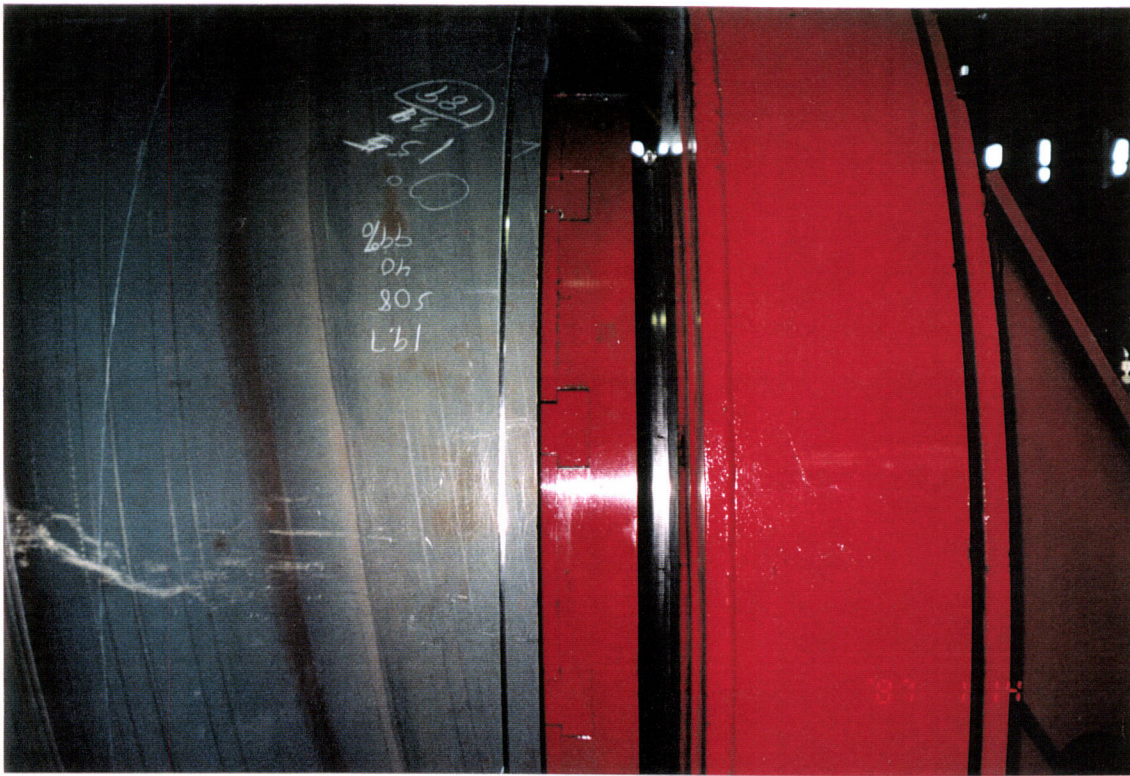
49- Where the spiral tube is cut while still moving down the mill.

08/16/96

50- Mounting the beam tube on the machine where it will be expanded, and uniformly cut for welding.

G960169-06 - O-PV





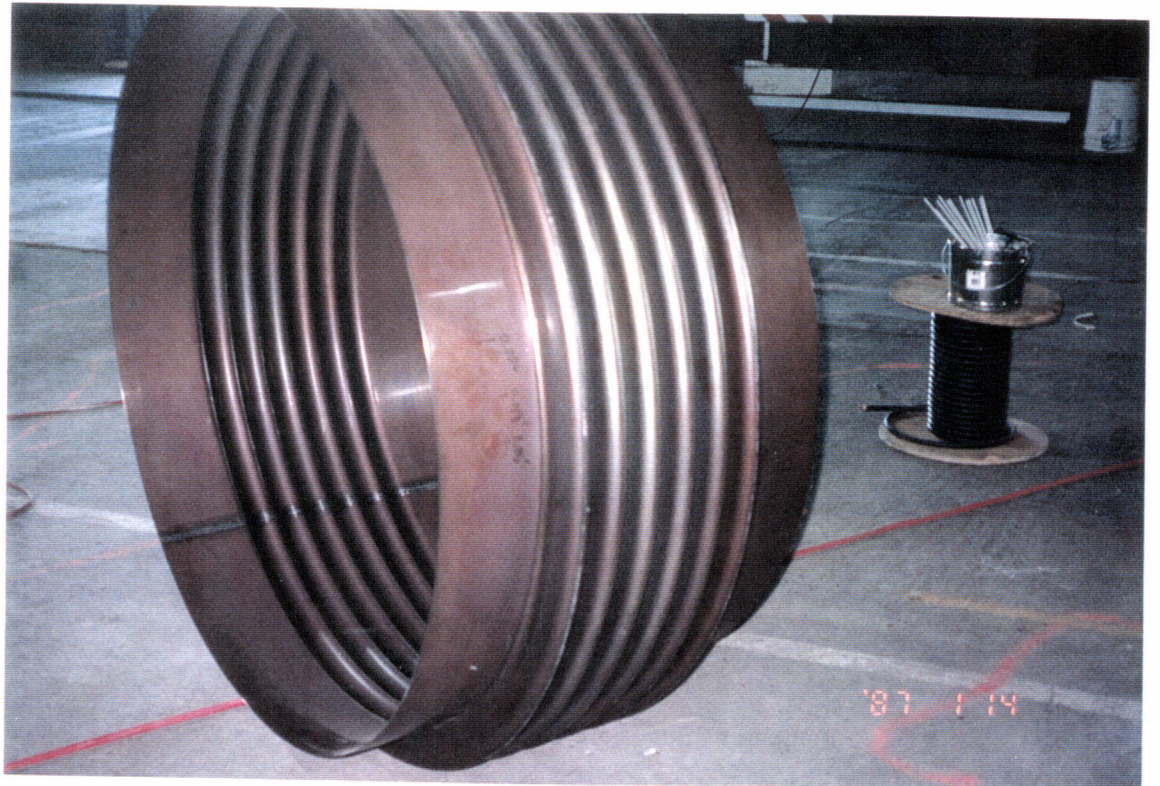
G960169-07-O-P

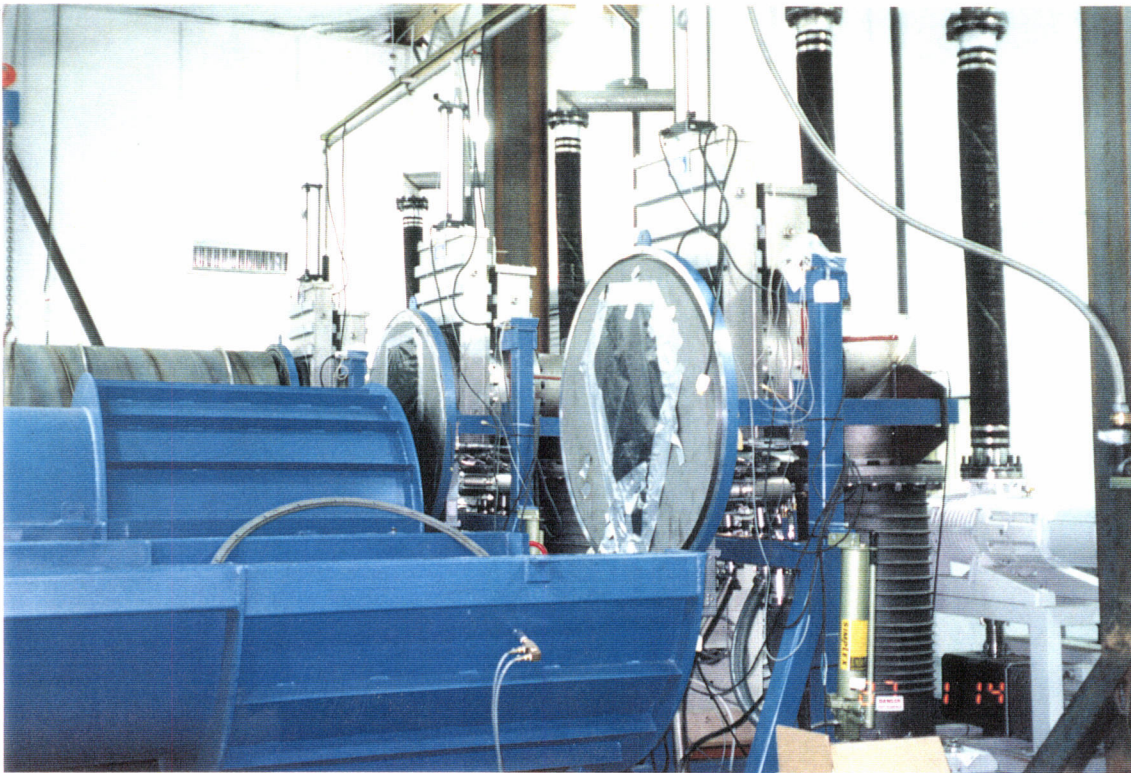
51- Close up view of the beam tube after being expanded and cut.

08/16/96

G960169-08-O-PV

52- A typical bellow expansion joint for the beam tubes.





G960169-09-O-P

08/16/96

53- Leak test coffins.

G960169-10-O-P

54- Excavation at the corner station.

08/23/96





G960169- 11 - O-P

55- A view of the corner station with the field offices in the background

08/23/96

G960169- 12 - O-P

56- Another view of the corner station, looking down the SW arm.





G960169-13 - OP

57- A view of the water trucks doing their part in dust control!

08/23/96

G960169-14 - OP

58- Fill for the overpass ramp is being compacted some more.





G960169-15 - U-P

08/23/96

59- Grubbing for chiller pads at the corner station.

60- Overlooking the corner station and field offices from the NW arm overpass ramp.

G960169-16 - U-P

08/29/96



08/29/96



G960169- 17 - O-P

61- Another view from "the hill".

08/29/96

G960169- 18 - O-P

62- CB & I crew set up at the NW mid station.





G960169-19 - O-P

08/29/96

63- CB & I welding activities preparing for the beam tube placement.

64- At Acme Pre cast yard - Otto is verifying the squareness of the enclosures before being accepted.
G960169-20 - O-P



09/07/96



G960169-21 - O-P

65-66 Close up of the equipment being used for the verification of the Beam Tube Enclosures.
G960169-22 - O-P

09/07/96





G960169- 23 - O-P

08/30/96

67- An inside view of the Type 'C' enclosures at the Pre cast yard - The workers are doing remedial work.

G960169- 24 - O-P

68- Pouring beam tube enclosures at the Pre cast yard.



09/07/96



G960169-25 - O-P

69- The top of the BTE, prior to finishing the domed top.

09/07/96

G960169-26 - O-P

70- Doming the top of the BTE.





G960169-27 - OP

71- Another view of the domed tops of the Type 'C' enclosures.

09/07/96

G960169-28 - OP

72- BTE's staged at the pre cast yard.





G960169- 29 - OP

73-74 An overview of the BTE's.

G960169-30 - OP

09/07/96





G960169-31-0P

75

An overview of the BTE's.

09/07/96