



G960161-01-O-P

Beam tube enclosure lifting device arrived at site on 23 July, 1996.

G960161-02-O-P

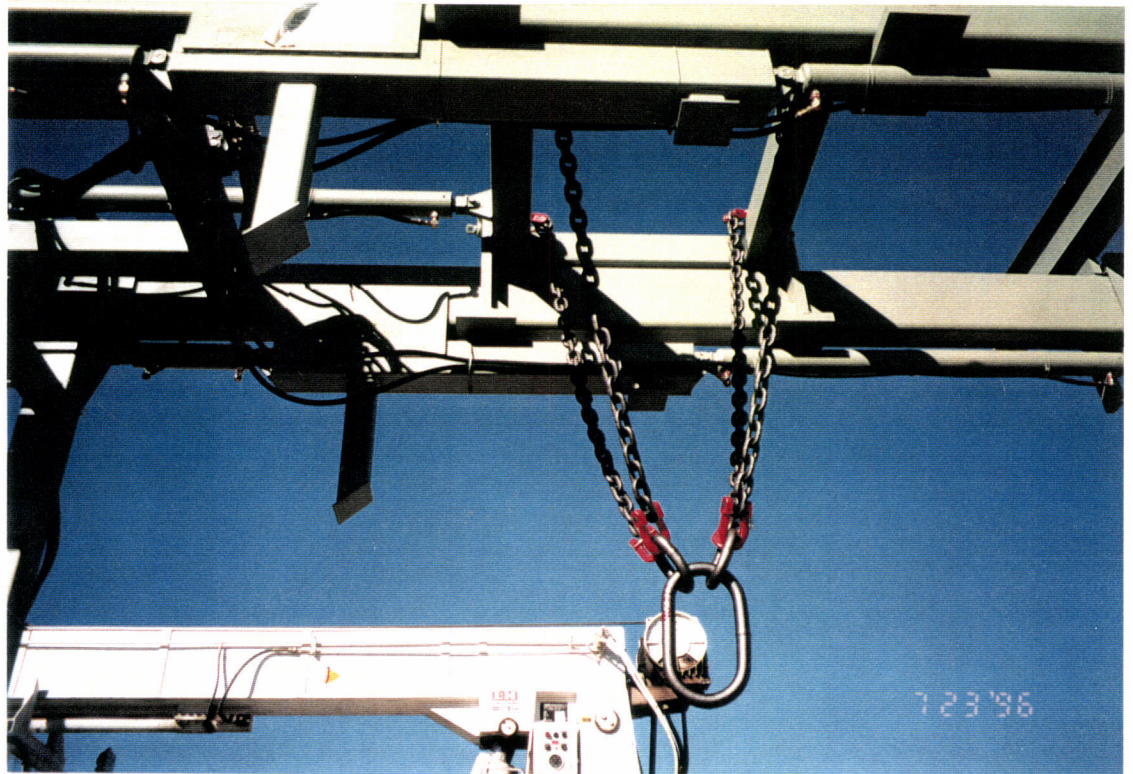


Closer view of the adjustable beams and rigging for all type beam tube enclosure



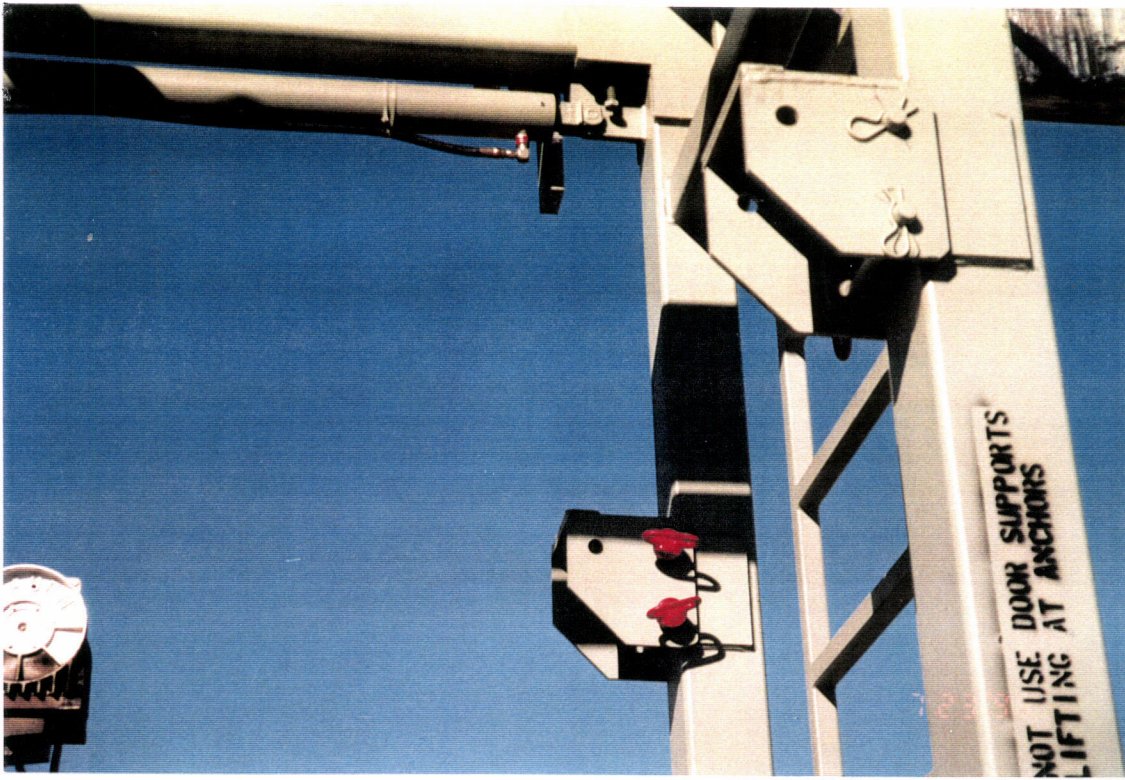
G960161-03-O-P

Closer view of the adjustable beams and rigging including the hydraulic pump and oil tank.



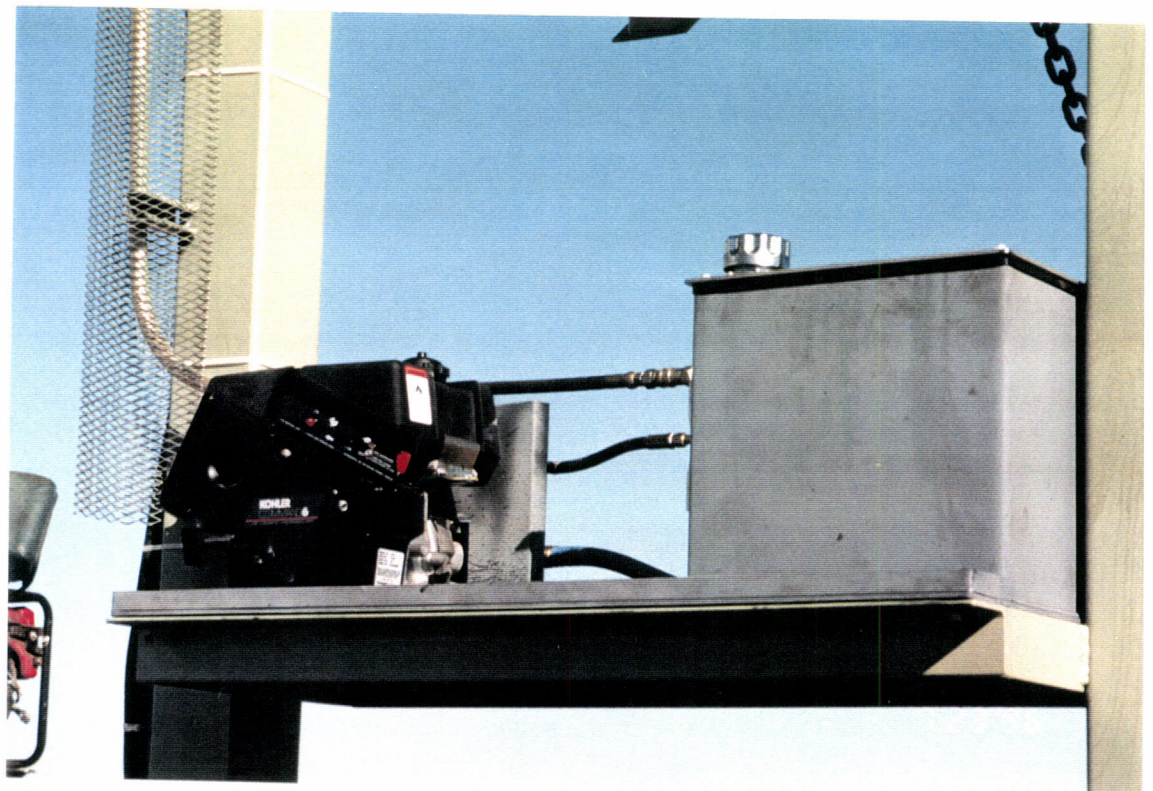
G960161-04-O-P

Closer view of the lifting device rigging arrangement



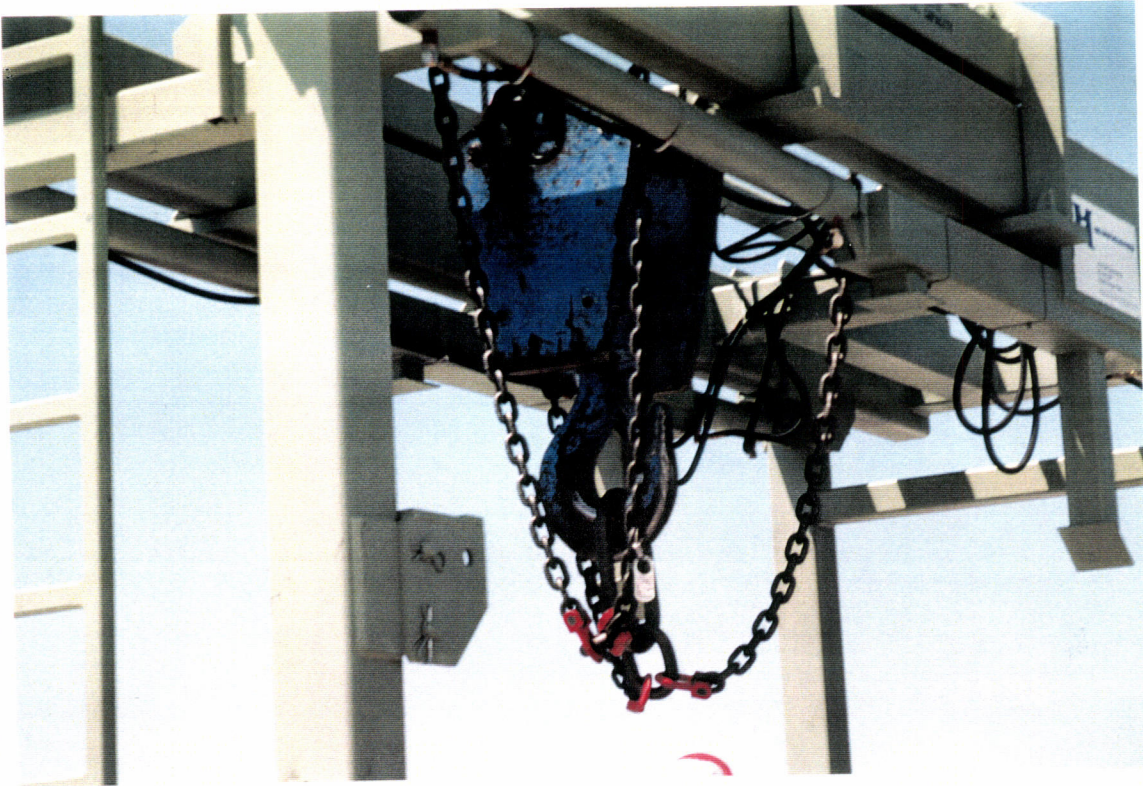
G960161-05-O-P

Lifting brackets for the type "A" (service entrance) beam tube enclosure. The upper door frame rests on the brackets during lifting.



G960161-06-O-P

Close up view of the hydraulic unit.



G960161-07-O-P

Crane hook connected to the lifting device rigging in preparation for lifting the device.



G960161-08-O-P

Crane lifting the beam tube enclosure lifting device.



G960161-09-O-P

Crane is picking the beam tube enclosure lifting device.



G960161-10-O-P

Crane is setting the lifting device in position for receiving the first type "C" beam tube enclosures.



G960161-11-O-P

The first two each type "C" beam tube enclosure arrived at site on 29 August, 1996 for the mock-up demonstration.



G960161-12-O-P

Another view of the type "C" beam tube enclosure module as they are delivered.



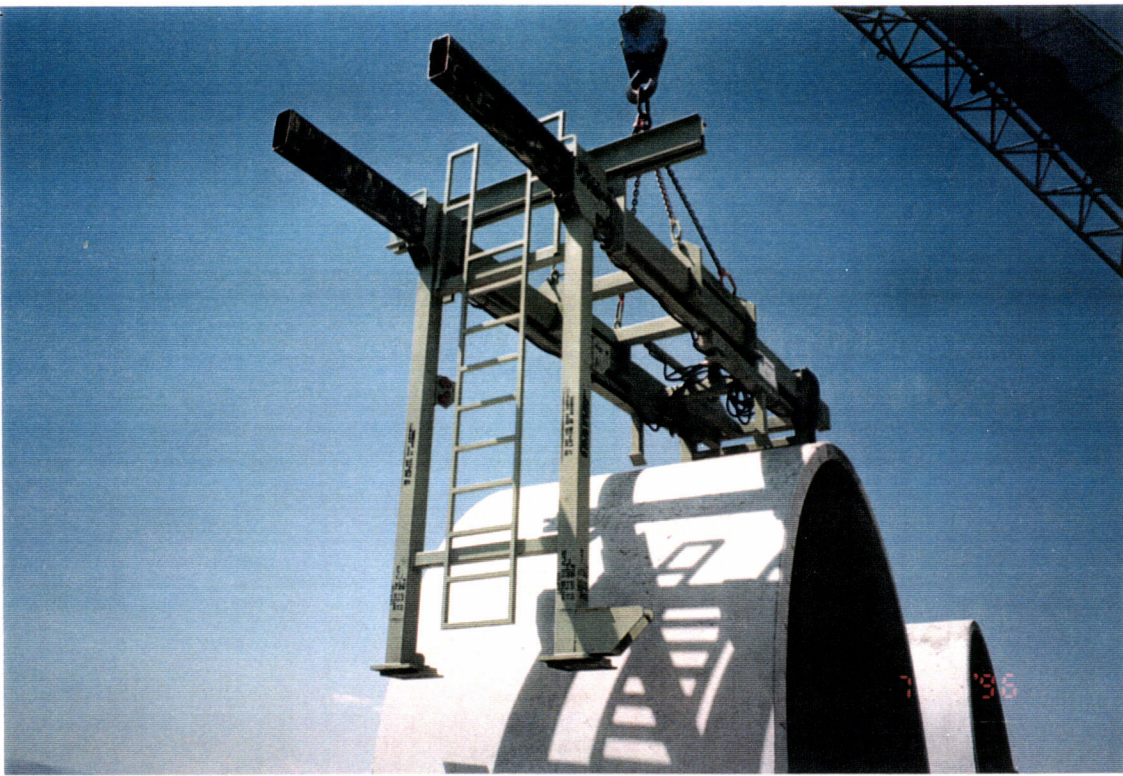
G960161-13-O-P

The enclosure lifting device is being aligned to pick the first type "C" module off the delivery truck.



G960161-14-O-P

Another view of the lifting preparation for a type "C" enclosure module.



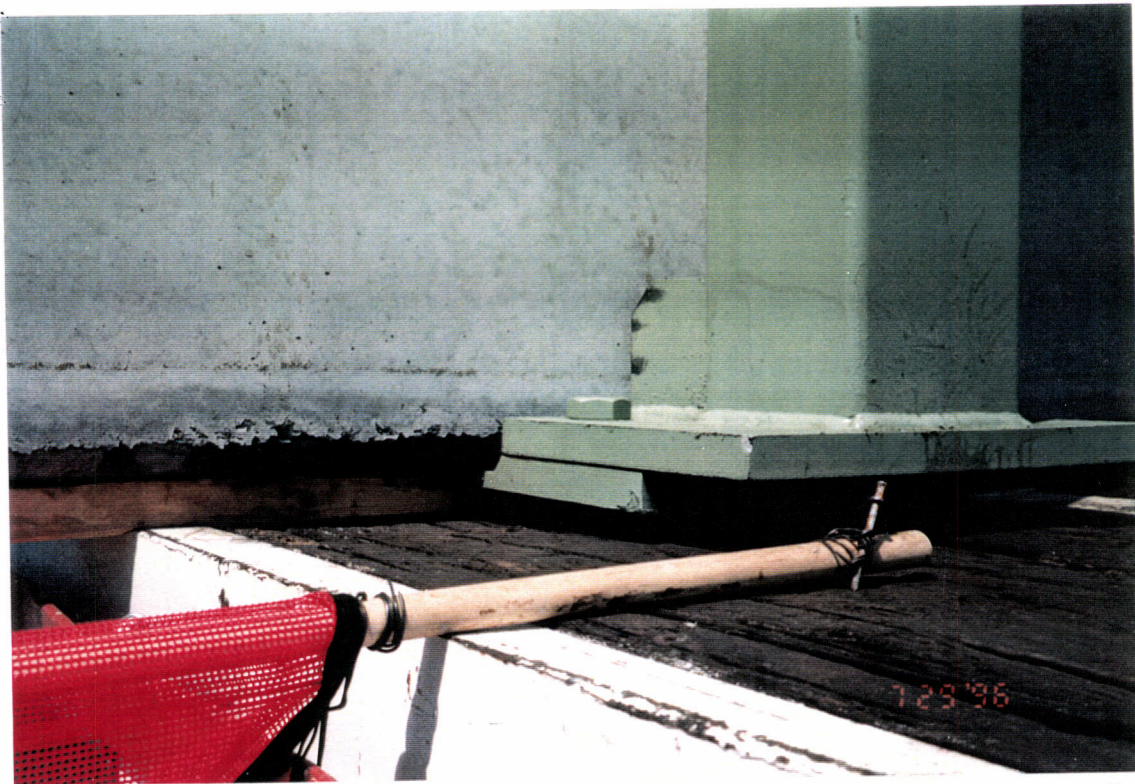
G960161-15-O-P

Close up view of the lifting device alignment in preparation to pick and unload the type "C" beam tube enclosure modules.



G960161-16-O-P

Closer view of the lifting device alignment to the type "C" beam tube enclosure module.



G960161-17-OP

Close up view of the lifting foot as it is set under the beam tube enclosure units for lifting.



G960161-18-OP

Close up view of the lifting foot as it is set under the beam tube enclosure units for lifting.



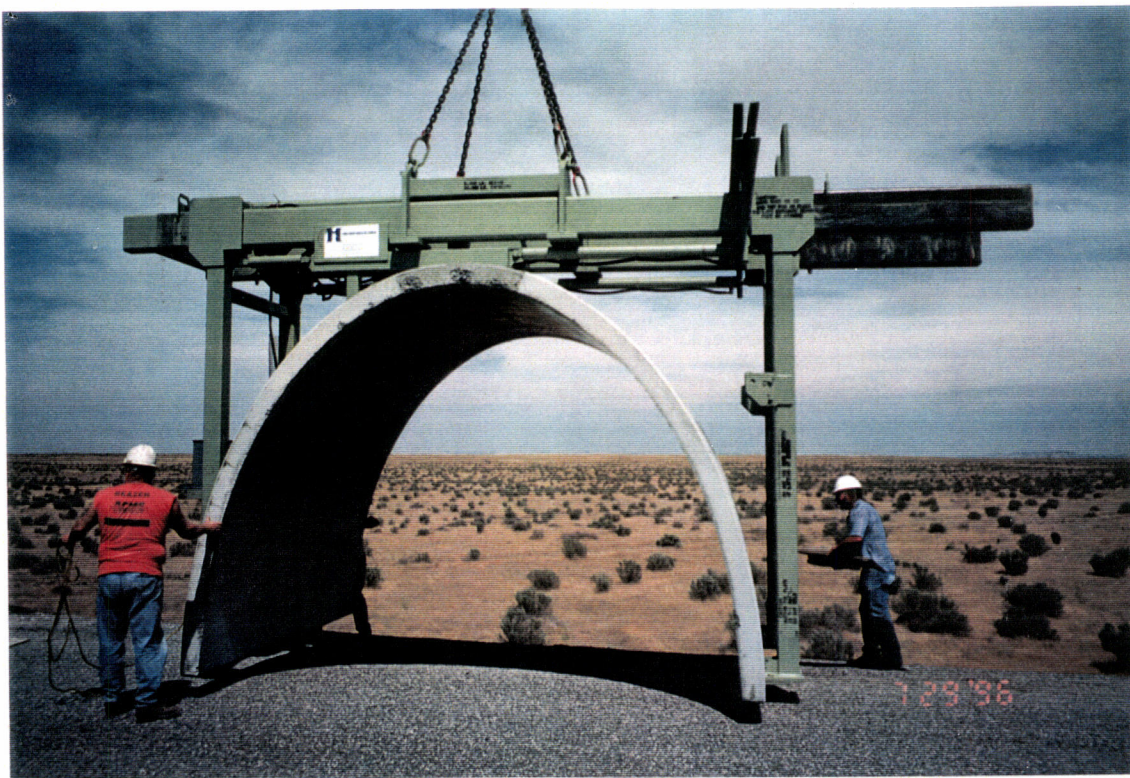
G960161-19-O-P

Different view during the lifting and setting of the type "C" beam tube enclosure module.



G960161-20-O-P

Different view during the lifting and setting of the type "C" beam tube enclosure module.



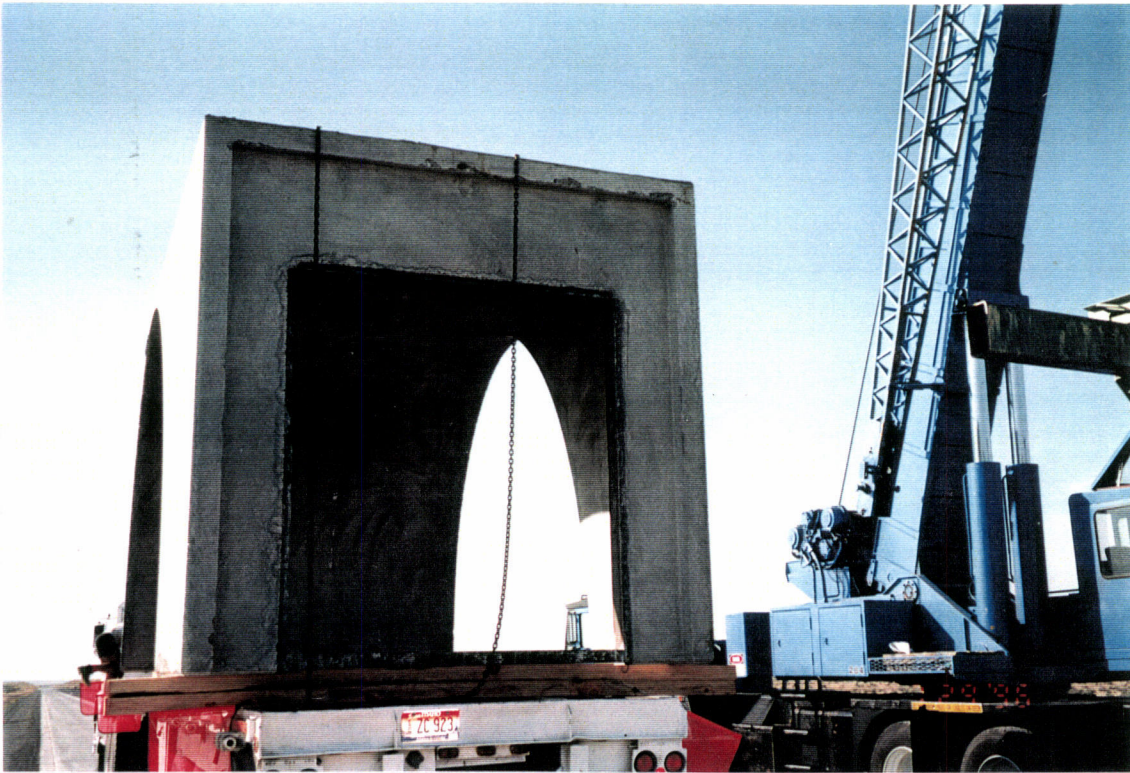
G960161-21-O-P

Different view during the lifting and setting of the type "C" beam tube enclosure module.

No Print
G960161- -O



Different view during the lifting and setting of the type "C" beam tube enclosure module.



G960161-22-O-P

First type "A" (service entrance) beam tube enclosure arrived at site.



G960161-23-O-P

View of the unloading activities for the type "A" beam tube enclosure module.



G960161-24-O-P

View of the unloading activities for the type "A" beam tube enclosure module.



G960161-250-P

View of the unloading activities for the type "A" beam tube enclosure module.



G960161-26-O-P

View of the unloading activities for the type "A" beam tube enclosure module.



No Print
G960161- -O

View of the unloading activities for the type "A" beam tube enclosure module.



G960161-27-OP

View of the unloading activities for the type "A" beam tube enclosure module.



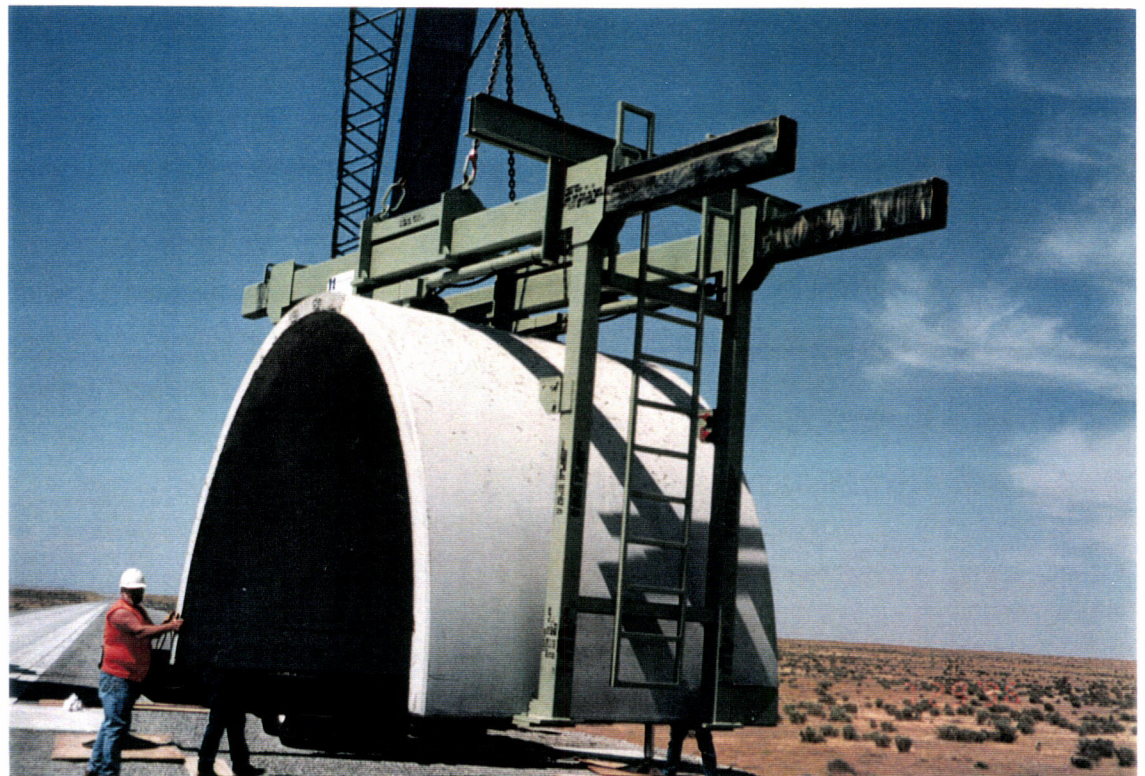
G960161-28-OP

The type "A" beam tube enclosure module is set next to the type "C" modules in preparation for the mock up demonstration.



No Print
G960161- -O

The first type "C" beam tube enclosure module is picked off the delivery truck.



No Print
G960161- -O

The type "C" beam tube enclosure module is temporarily set on to the beam tube access road.