

G960132-



G960132-01-O-P

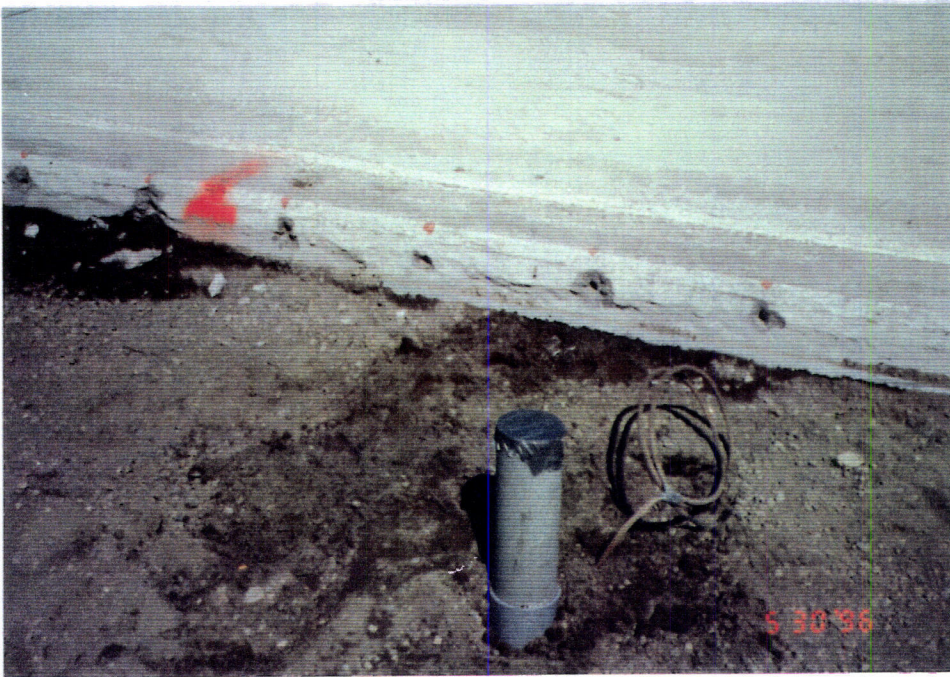


G960132-02-O-P

12 " diameter pipe sleeve was installed under the beam tube slab at the northwest arm near the corner station. (three views).



G960132-03-O-P



G960132-04-O-P

Stub-up of the bake-out power conduit at the service entrance.



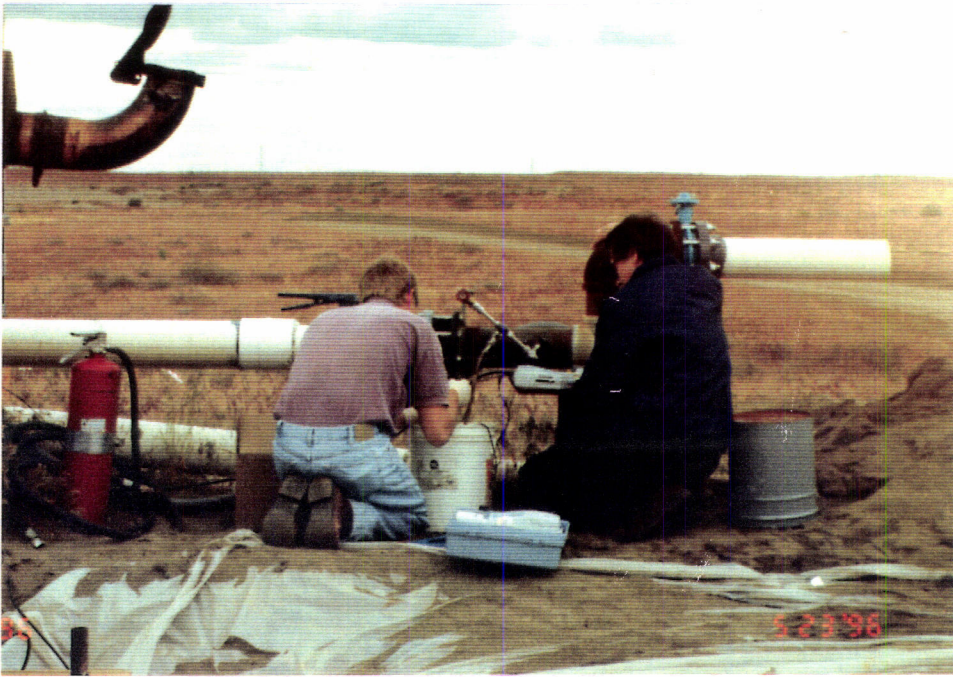
G960132-05-O-P

Typical concrete duct bank



G960132-06-O-P

View from the service entrance to the bake-out box. (typical)



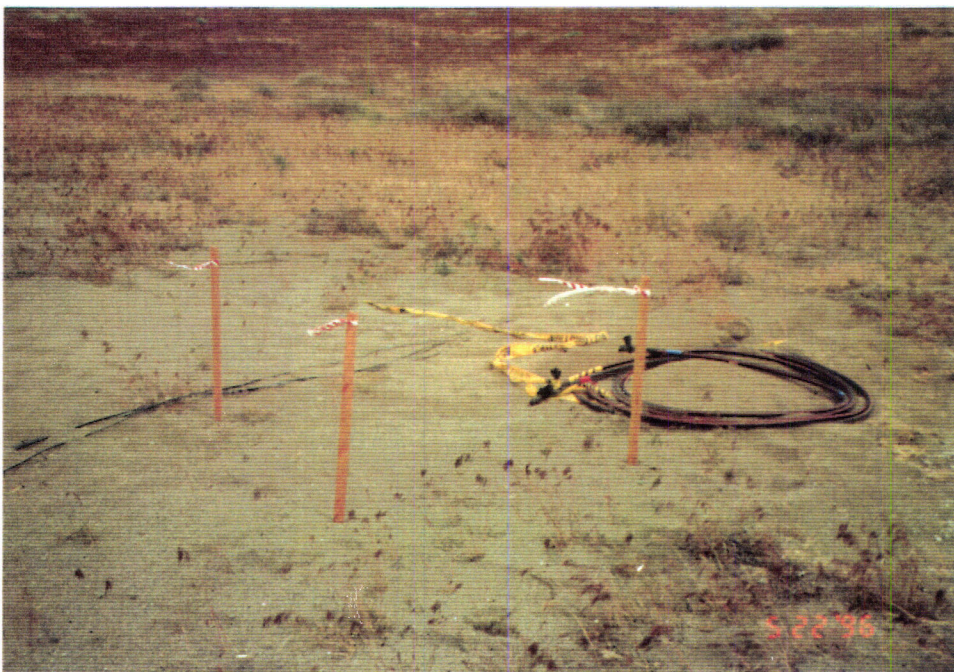
G960132-07-O-P

DOE personnel are taking water samples at well No. 1.



G960132-08-O-P

CBI temporary power supply trench.



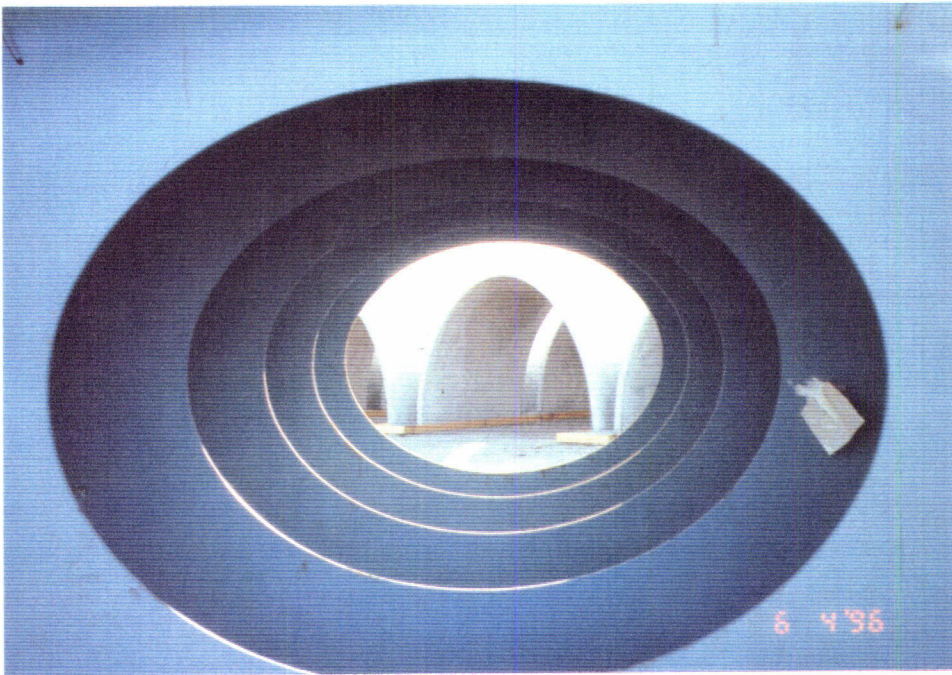
G960132-09-O-P

The PUD power cable, installed at the well No. 1.



G960132-10-O-P

Enclosure for the  
steam generating  
equipment at the  
Acme precast yard.



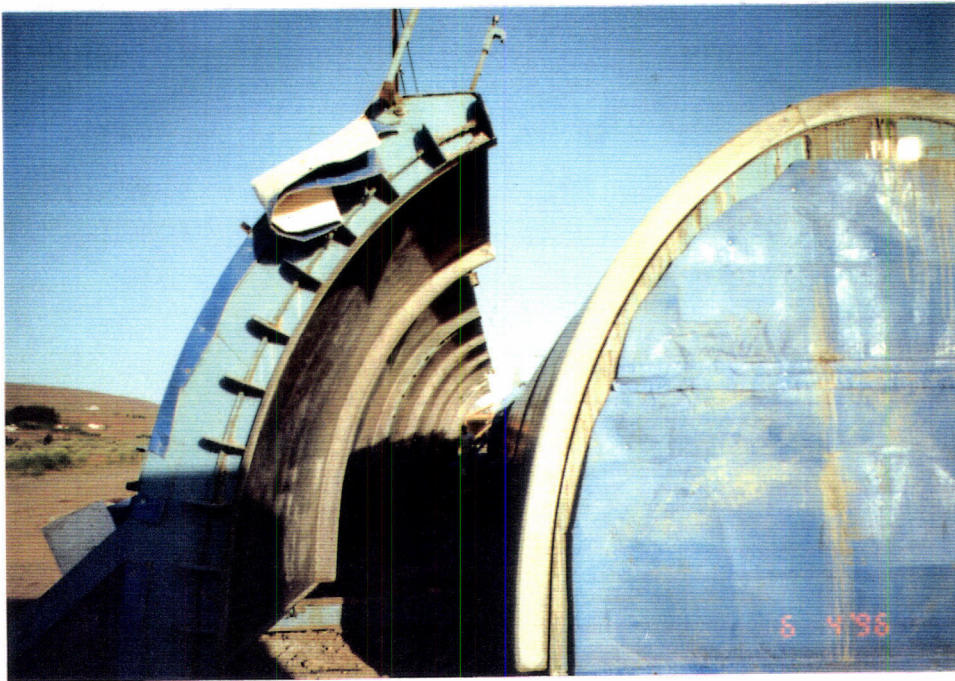
G960132-11-O-P

View through the  
"C" type beam tube  
enclosure module  
transport equipment



G960132-12-O-P

View of newly  
casted type "C"  
enclosure  
modules.



G960132-13-O-P

Form removal activity of newly casted type "C" modules.



G960132-14-O-PV

Another view of the form removal activities.



G960132-15-O-P

Newly casted type "C" enclosure modules.

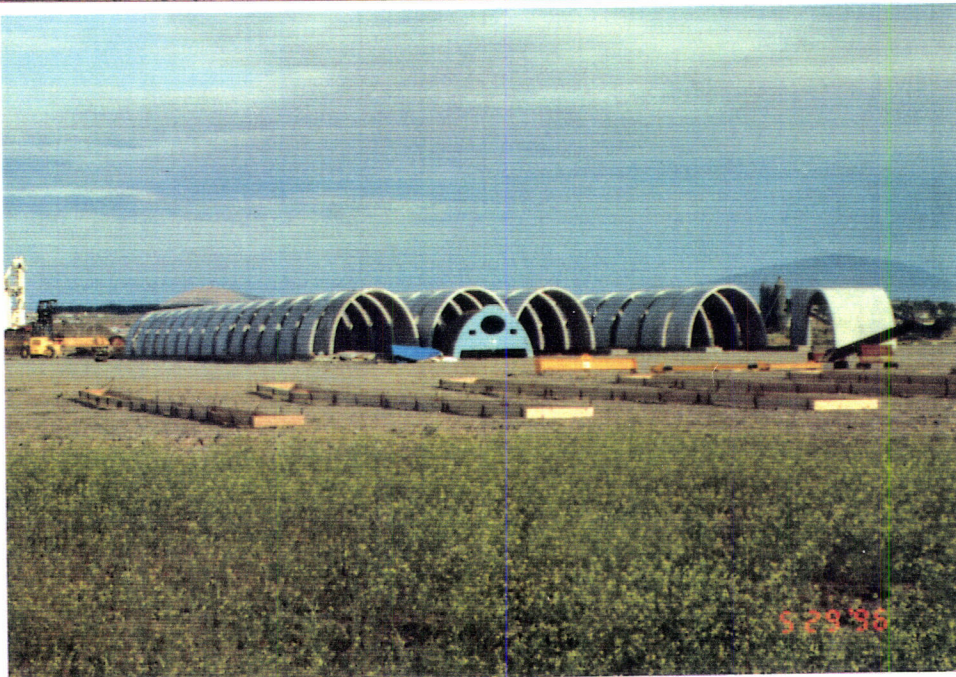


G960132-16-O-P



G960132-17-O-P

General view of the  
completed beam  
tube enclosures.



G960132-18-O-P